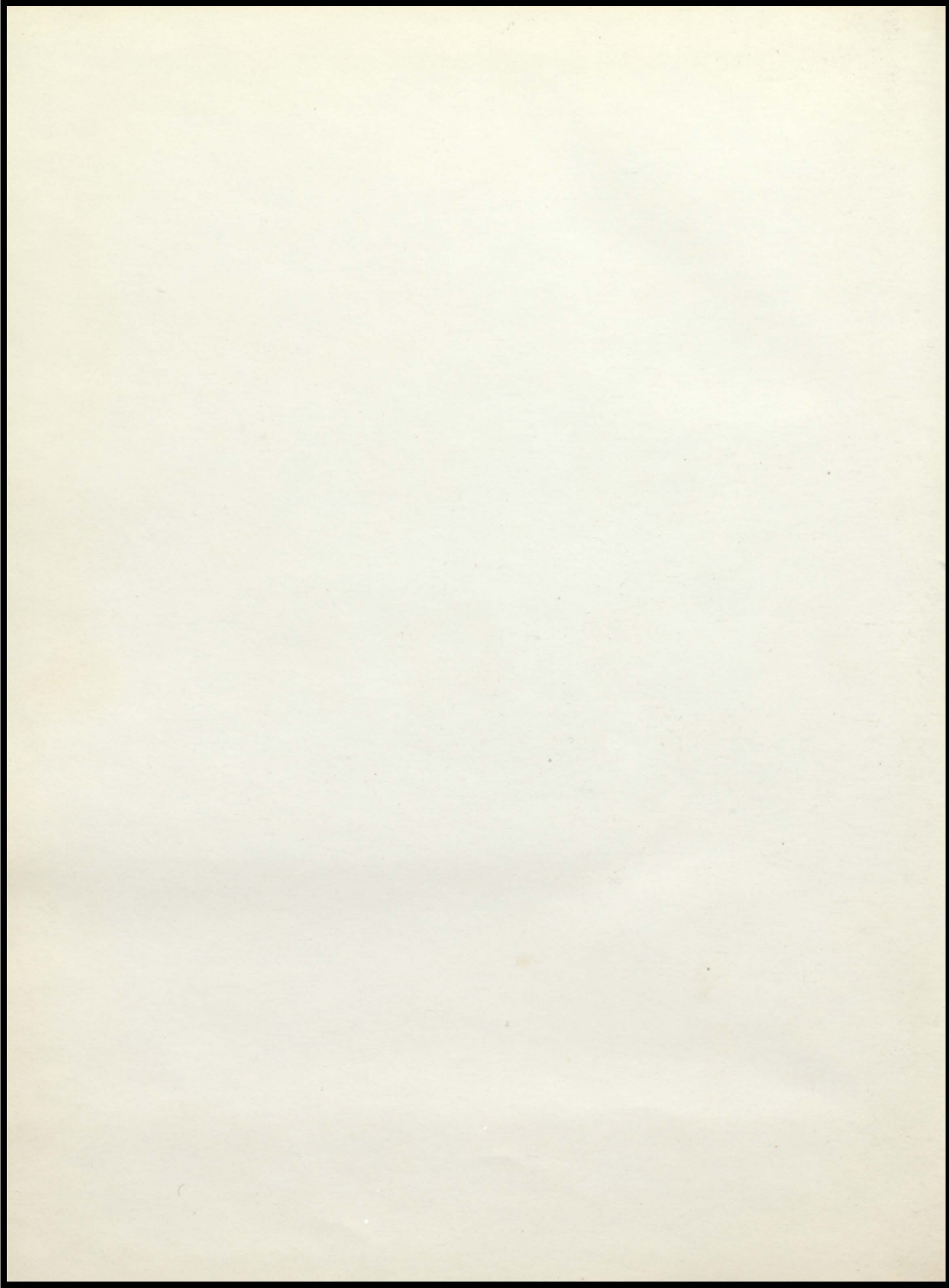


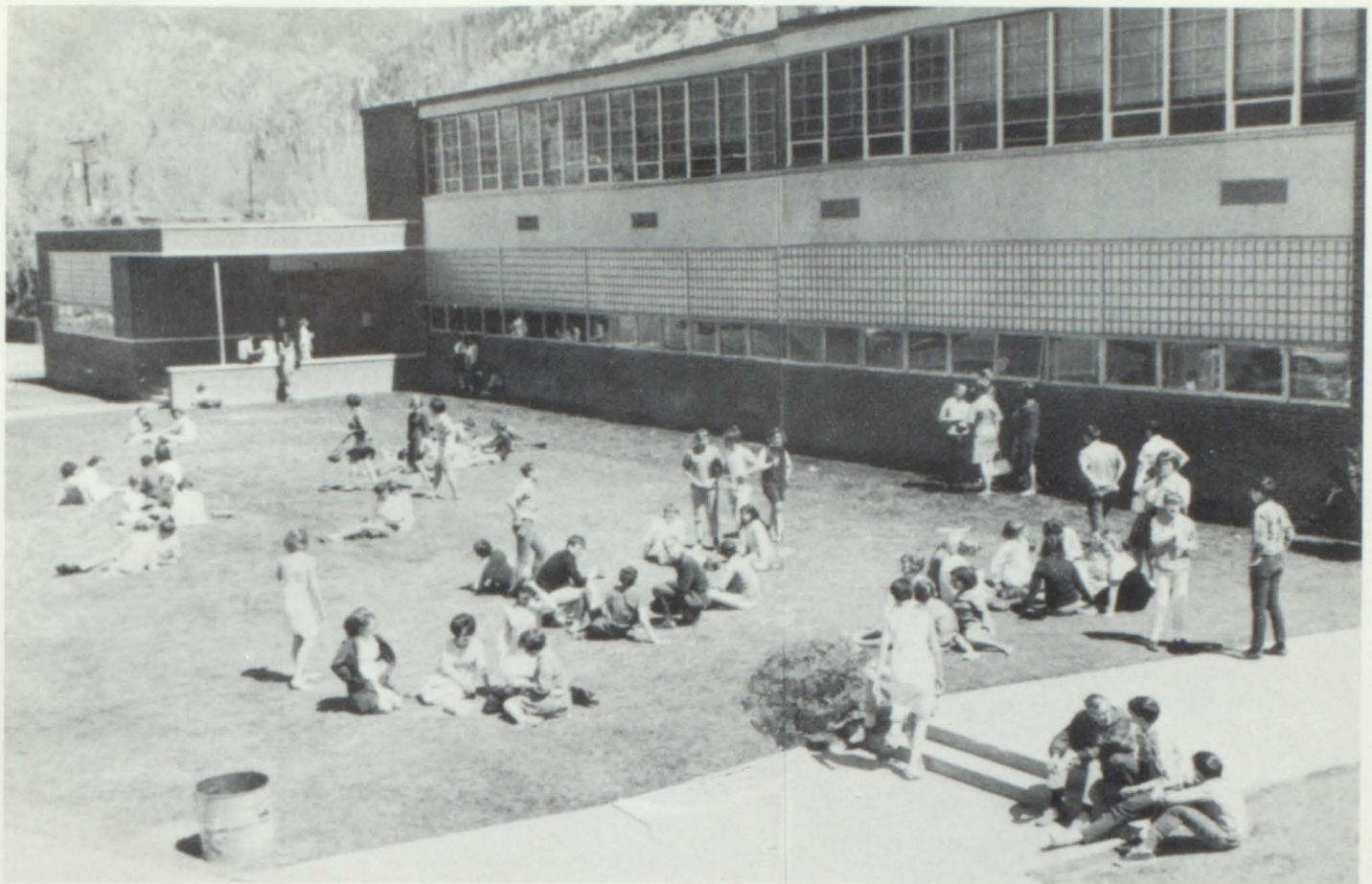
'67

YAMPAH









1967

YAMPAH

Glenwood Springs High School
Glenwood Springs, Colorado

CONTENTS

ADMINISTRATION - Page 2

FACULTY - Page 4

SENIORS - Page 9

JUNIORS - Page 27

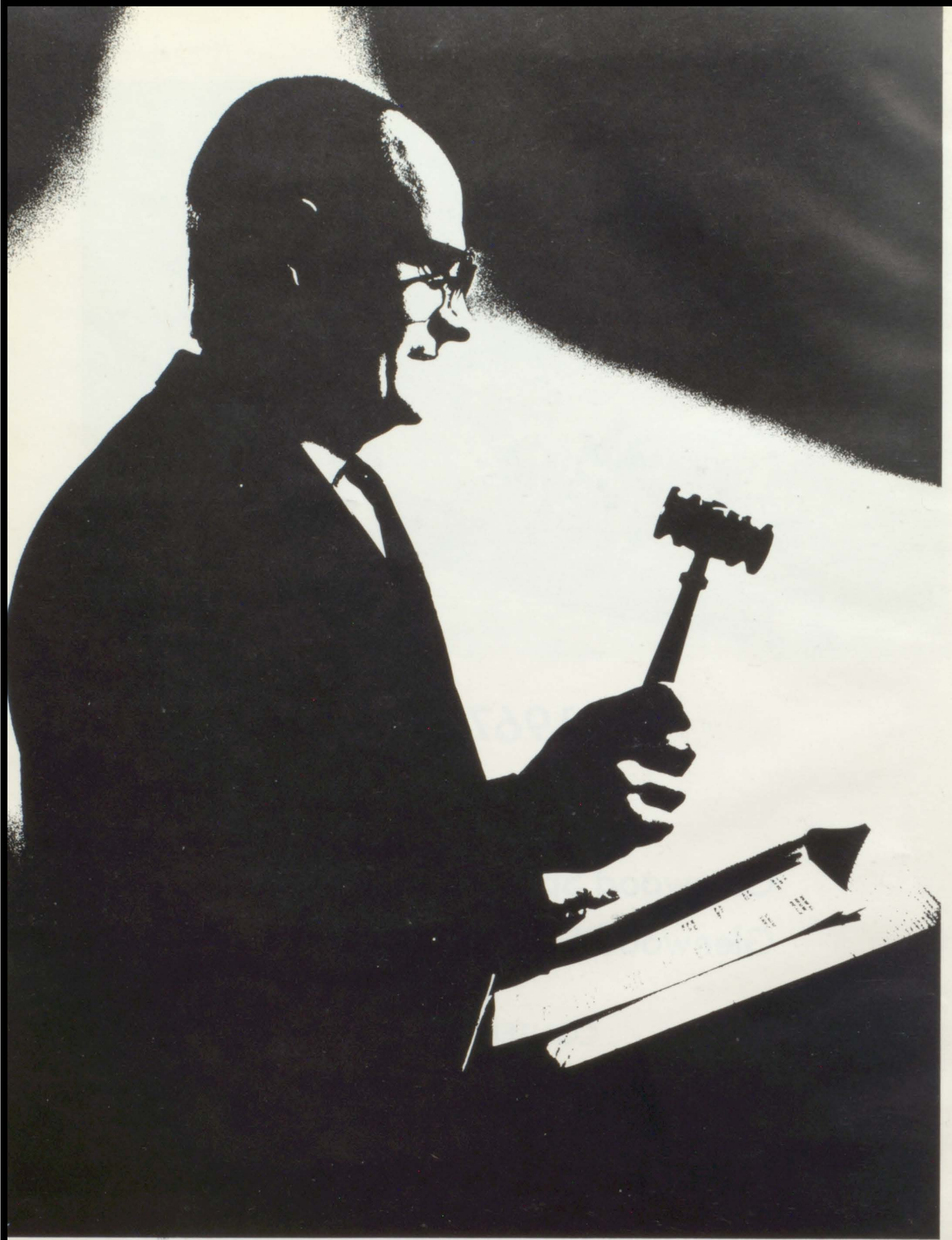
SOPHOMORES - Page 37

FRESHMEN - Page 45

SCHOOL LIFE - Page 53

SPORTS - Page 79

ADS - Page 91



ADMINISTRATION

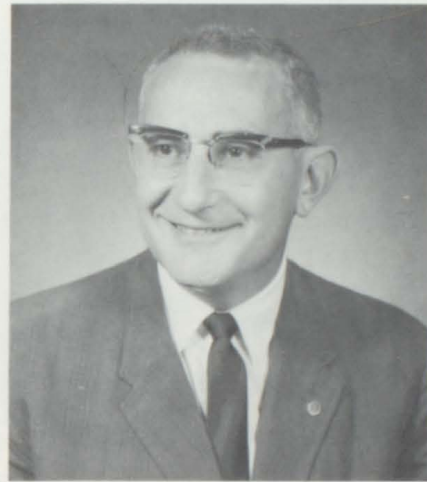
SCHOOL BOARD AND ADMINISTRATION



L. to R.: Robert Delaney-Vice President; Pat Coryell, Director; Merlene Pierce, Secretary-Treasurer; Walter Wieben, Director; Earl Mosbarger, Director; Edgar Niemann, President.



Mr. Lucian Allen
Superintendent



Mr. Nicholas Massaro
Assistant Superintendent



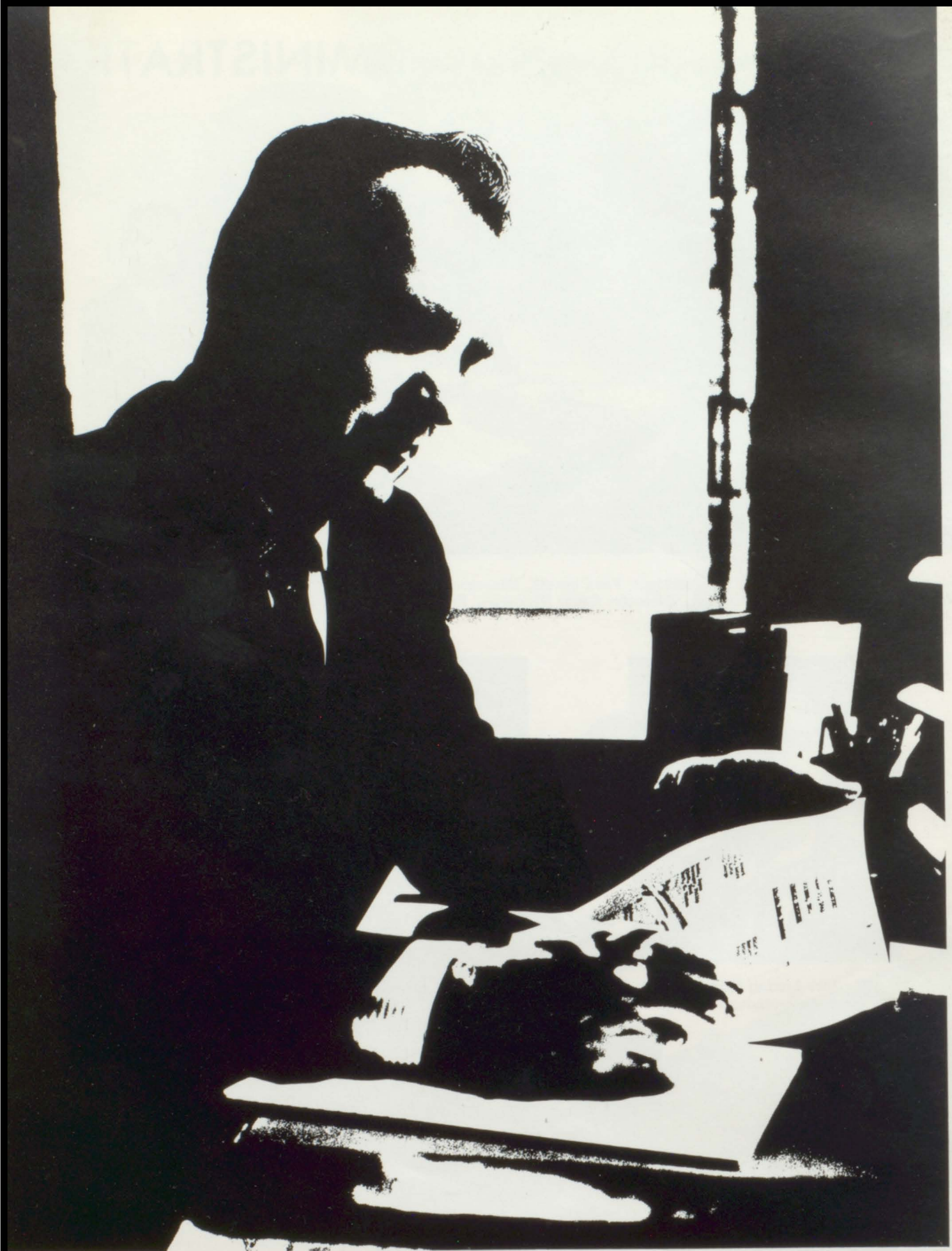
Mrs. Merlene Pierce



Mrs. Ann Mercer



Mrs. Judy Senior



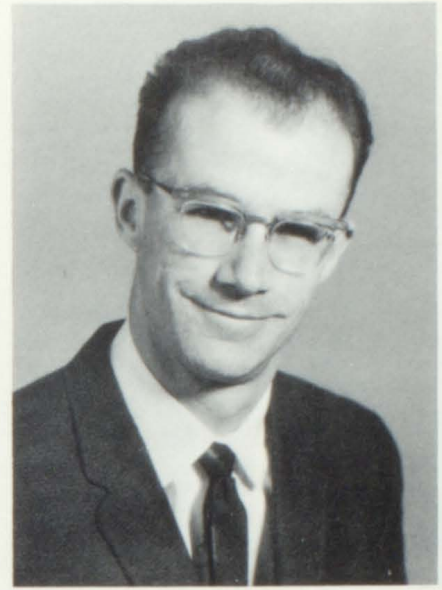
FACULTY



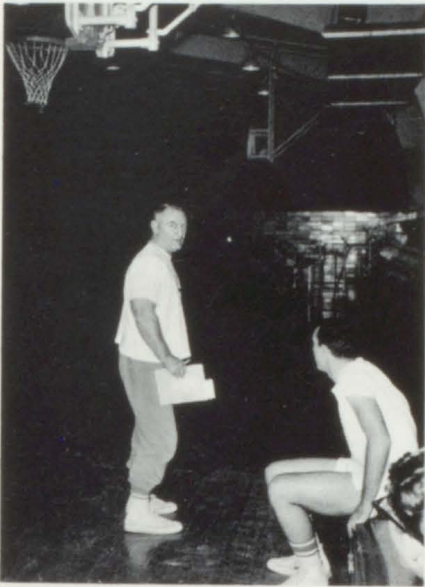
Keith Allen
BA Augustana College
MA University of Colorado
Speech



Fritz Bramble
BA Western State College
MA Western State College
Music



Richard Chadwick
BA Western State College
English



Let's go!



Mildred Graves
BA Colorado State University
MA University of Denver
Home Economics



Bert Frink
BA Colorado State College
MA Colorado State College
Shop



Mow 'em down!

Patsy Guadnola
MA Colorado
State College
BA Colorado
State College

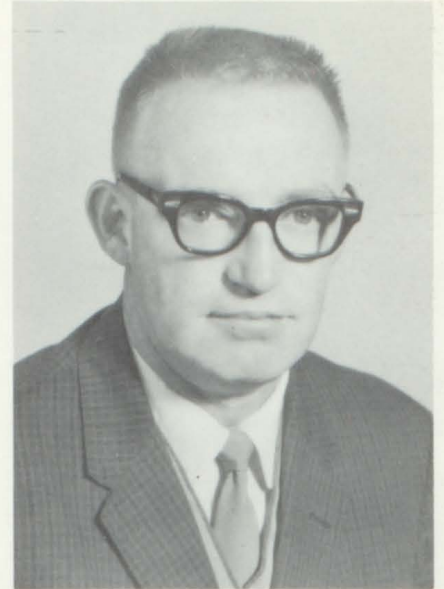




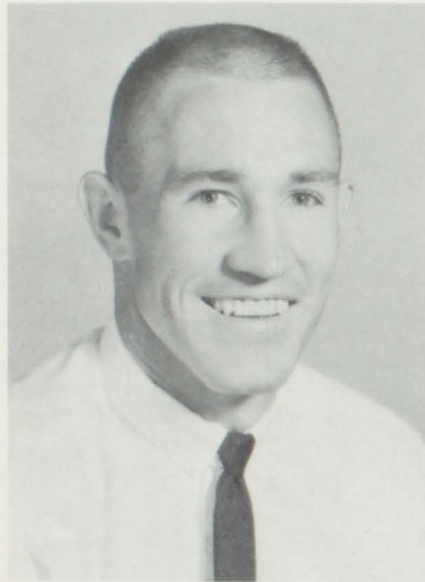
Robert Jones
BA Adams State College
Science



Geraldine Lemler
BA Northeastern State College
Spanish



Dan Levan
BA Idaho State University
Art



Donald Miller
BA Western State College
Math



Marvin Lyons
BS Colorado State University
M. Ed. Adams State College
Math



"Nurse" Jeanie



Nondis Milosevich BS University
of Colorado Physical Education



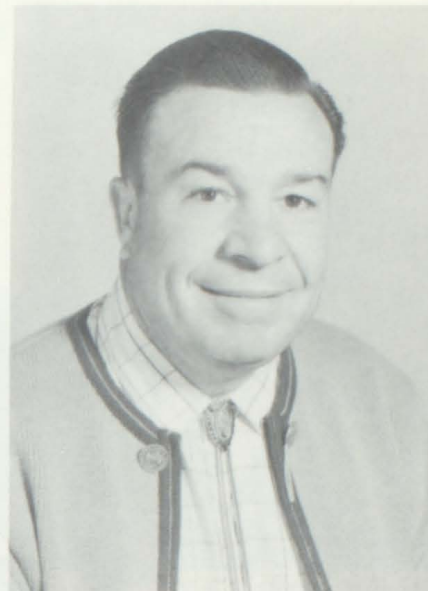
Faculty "gab" meeting



Anita McFadden
BA Western State College
Librarian



Margaret Nordhausen
AB Western State College
English



Charles Piper
BS Colorado State University
Science



Ileen Scriven
BA Adams State College
Business



Cynthia Stapp
BA Western State College
English



Your Assignment is. . .



Nicholas Stubler
BS University of Santa Clara
Social Studies



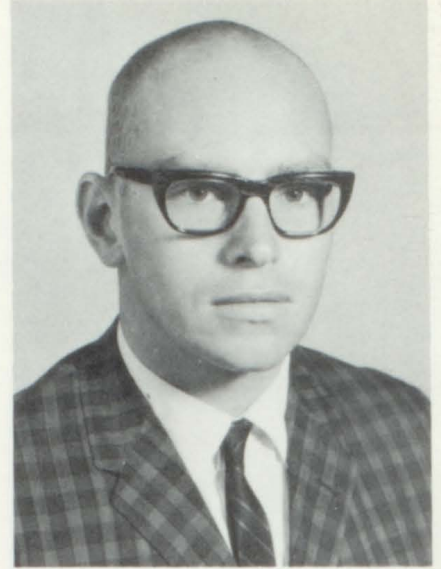
Typing in long hand???



Lee Whitwer
 B.M/E. Bethany College,
 Kansas
 M.M. Colorado University
 Music



James A. Whitehair
 AB Kansas State Teachers
 College
 MA Colorado State College
 Business



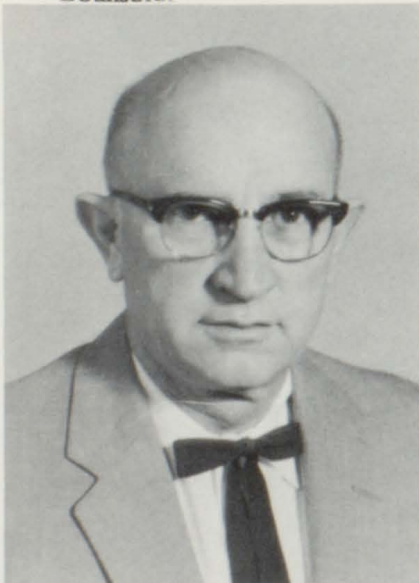
John Wagner
 BS Eastern Oregon College
 MA University of Denver
 Social Studies



Kenneth Word
 BA University of Missouri
 M. Ed. University of Miss.
 Counselor



June Woods
 BA Adams State College
 MA Western State College
 English



Percy Wright
 BA South Western State,
 Oklahoma
 MA South Western State,
 Oklahoma
 Shop





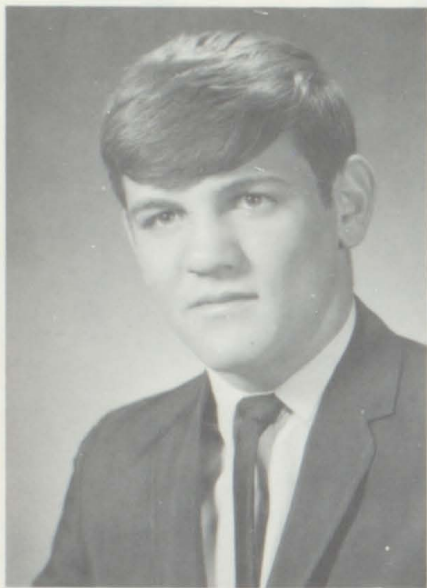
SENIORS



ARNOLD, CATHLEEN

SENIOR

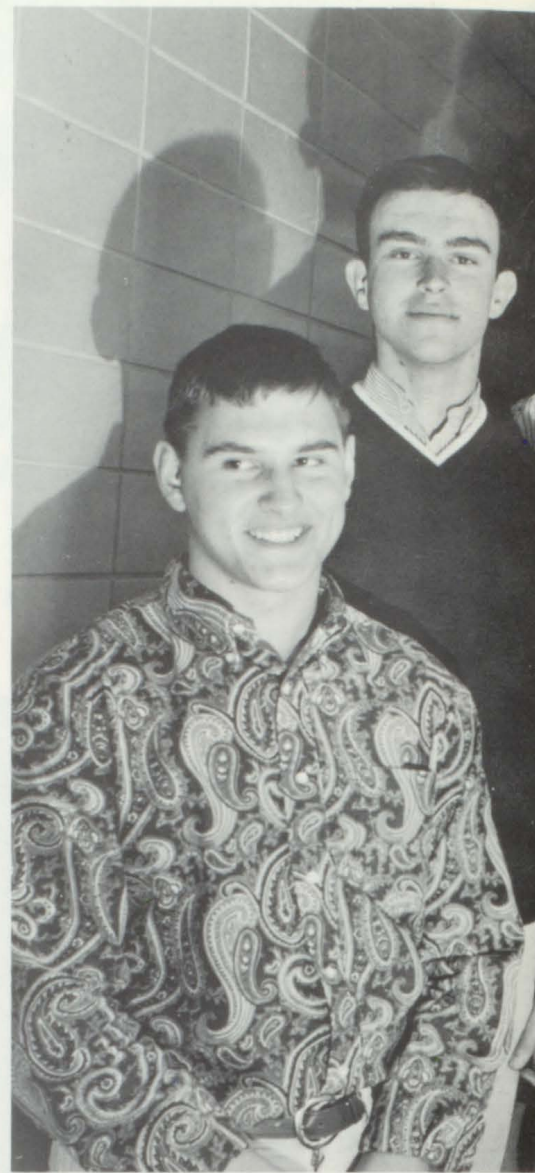
19



ARTAZ, DAN



BAIR, DONNA



Richard Stubler
Doug Pratt
Barbara Oldsen
Karen Robertson
Linnea Mitchell



BEATTIE, LORIE



BENNETT, JIM



BETZ, SHARON



President
Vice President
Secretary
Treasurer
Historian

CLASS

67



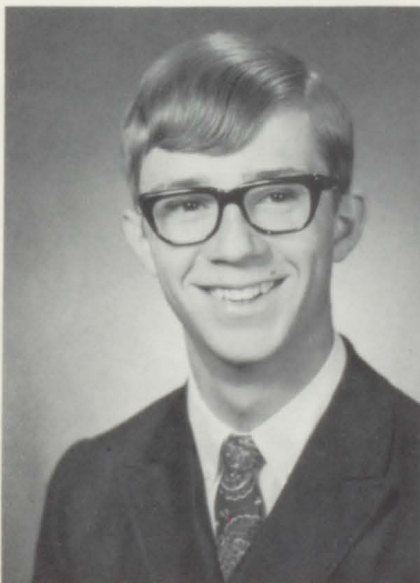
BIRD, SANDRA



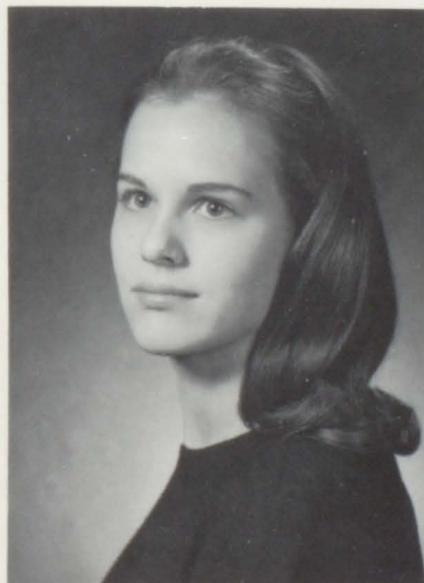
BISSING, TERRI



BLACK, VICKIE



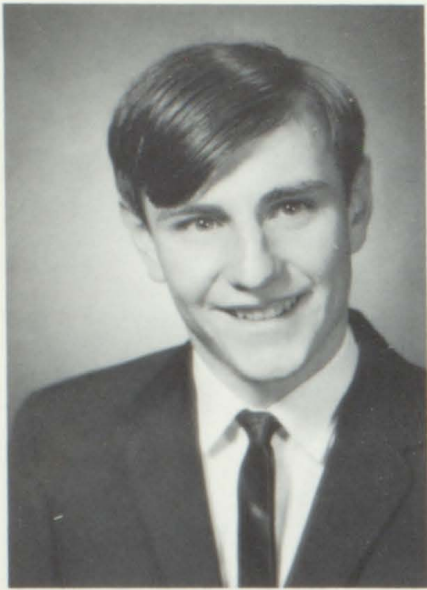
BRADSHAW, DAVE



BUTLER, SUSAN



CHEEDLE, NANCY



COLLER, SETH



COOK, DAVE



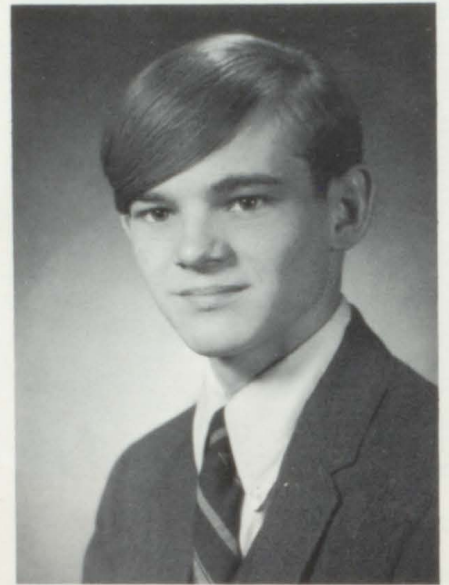
COX, WENDY



CRUTCHER, JOHN



DAVENPORT, JOHN



DAVENPORT, JIM



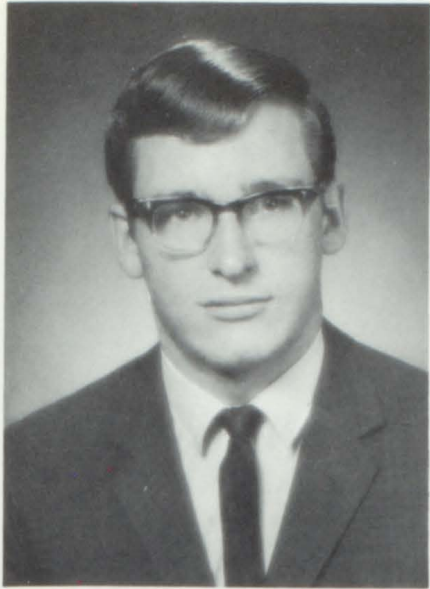
DELANEY, DIANE



DEVRIES, VAN



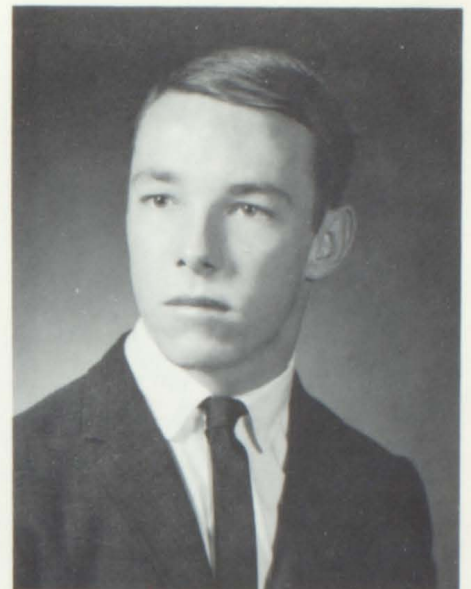
DOSSIGNY, GAYLA



DUNSDON, BARRY



DUNSDON, MICHAELE



EDSON, DENNIS



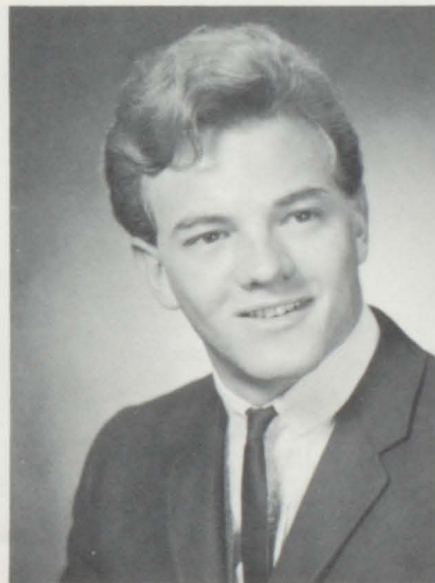
FERRIN, DIANA



SENIOR HOMECOMING FLOAT 1967



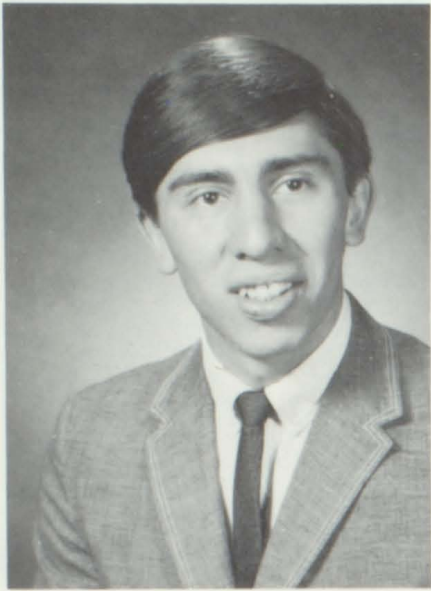
FISCHER, JUDY



GARDNER, RIC



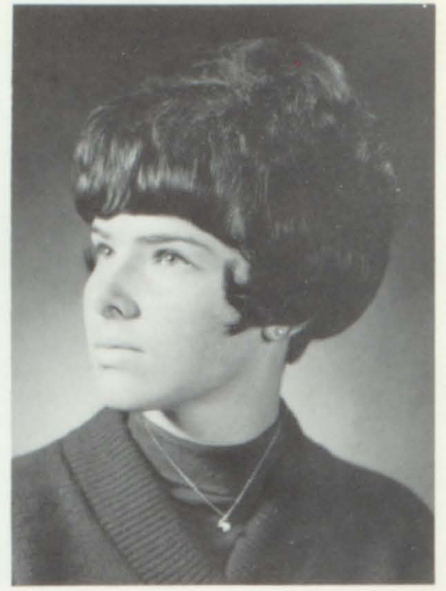
GILBERT, PAT



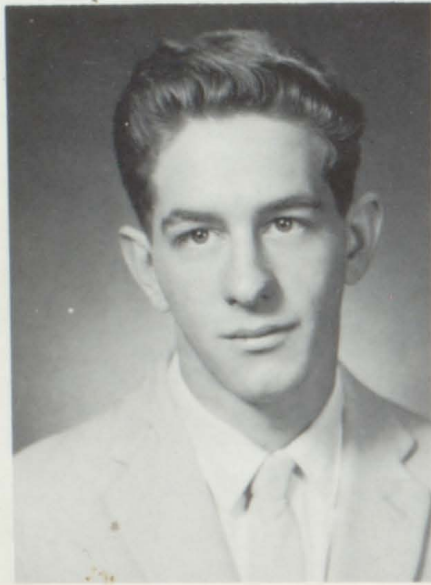
GONZALES, MIKE



GRIEGO, DARLENE



HARRINGTON, ADA



HATFIELD, FRED



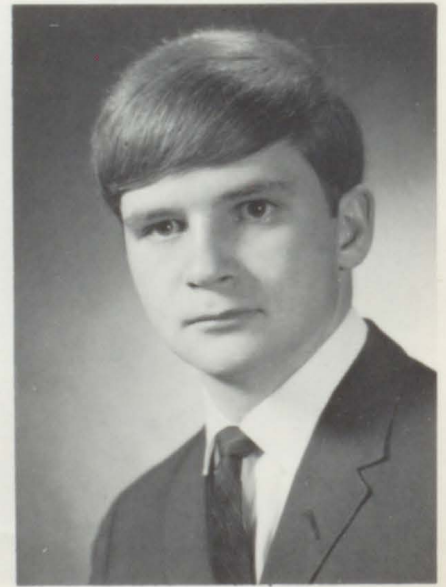
SENIOR INITIATION 1967



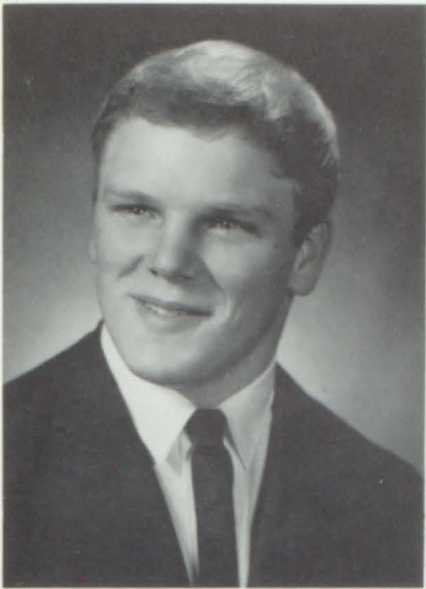
HAUSCHEL, SANDRA



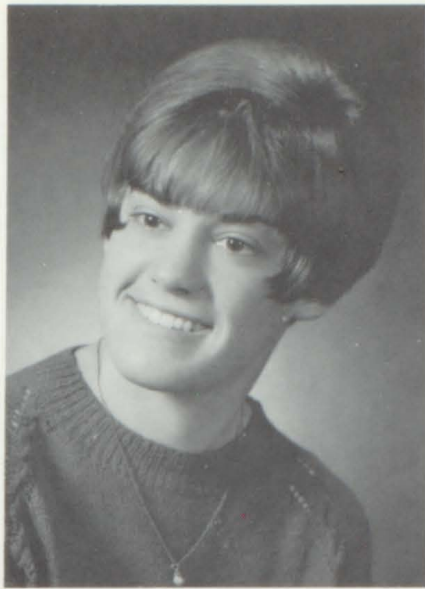
HAUSCHEL, SHERON



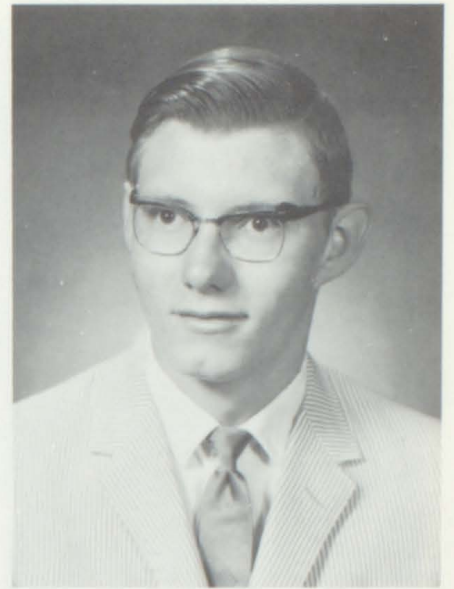
HENDERSON, DOUG



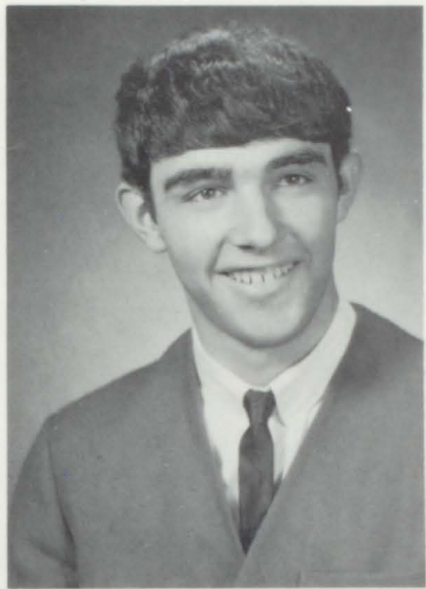
HOGUE, ED



JACKSON, ANNE



JARBOE, ROGER



JAROSZ, PAT



JONES, ARTIE



KENNISON, JUDY



LAKE, KATHY



LATSON, ED



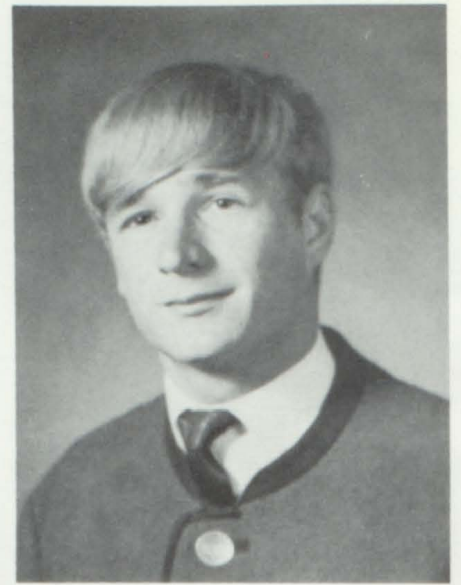
LEE, JOHN



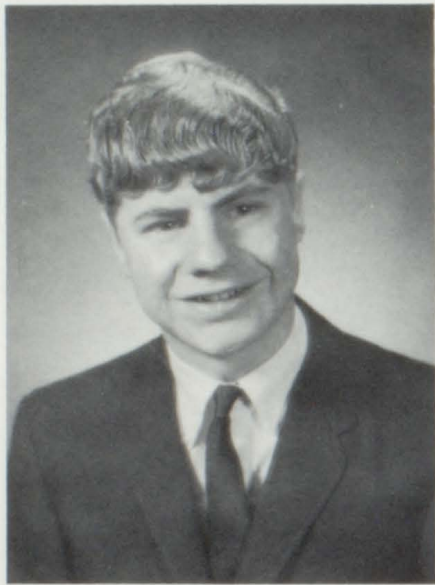
LEWIS, CHRISTINE



LEWIS, JULIE



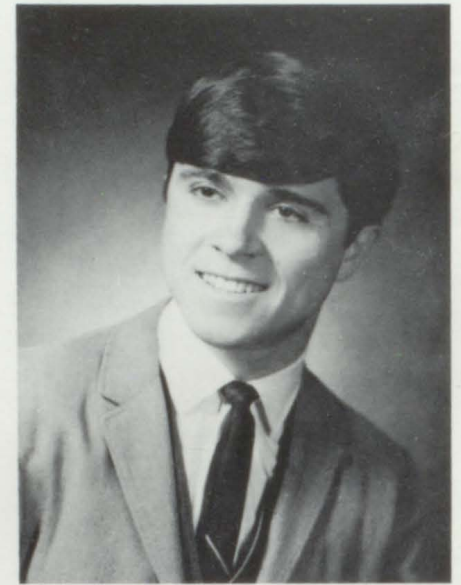
LEMLER, WAYNE



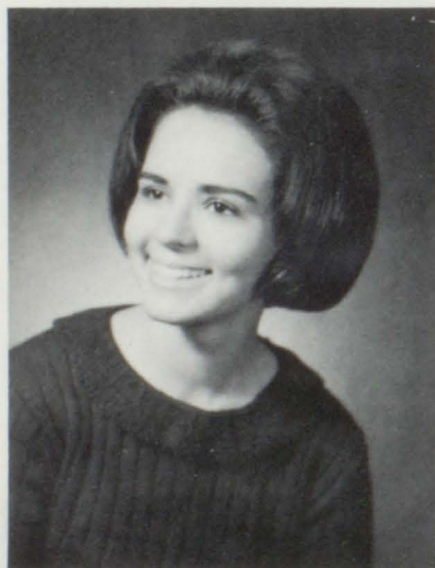
LYONS, KEN



MAIN, PERRY



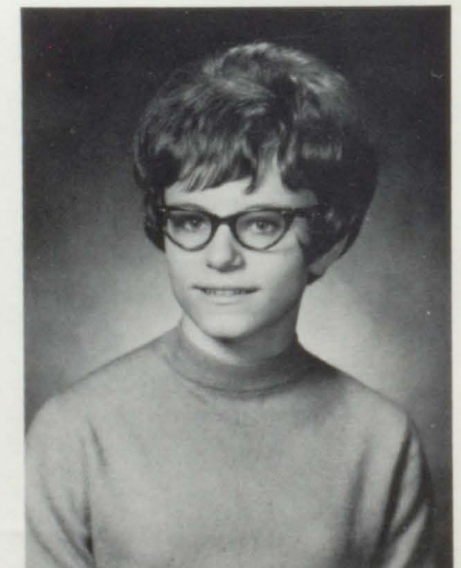
MESTAS, DENNIS



MICHELS, NANCY



MILLER, SHERRY



MINCER, PHYLLIS



MITCHELL, LINNEA



Robbing the candy machine!?!?



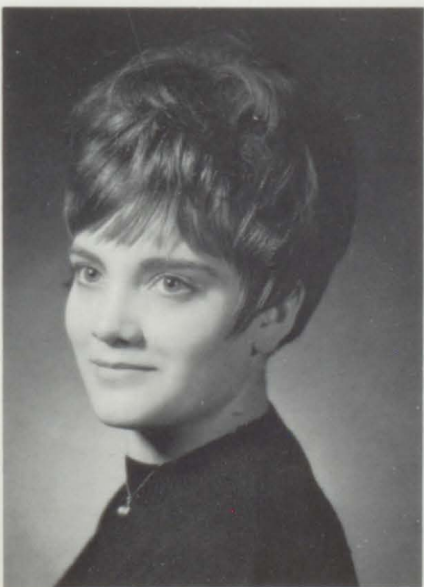
MORRIS, LORETTA



MOSCHNER, LINDA



MUELLER, BETTE



OCHKO, MICKIE



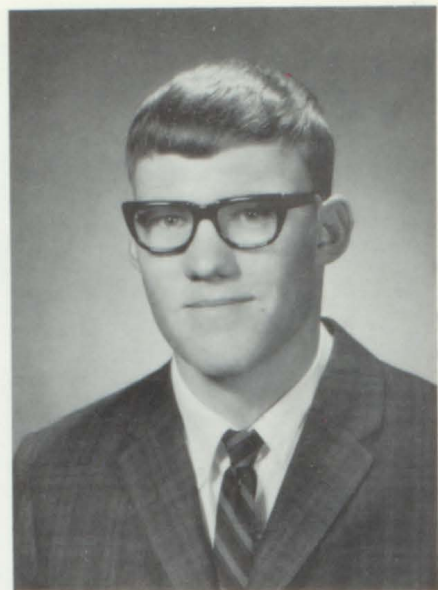
OLDSSEN, BARBARA



PACE, JANIS



Red devil strikes again!



PHILPOTT, TRACY



PRATT, DOUG



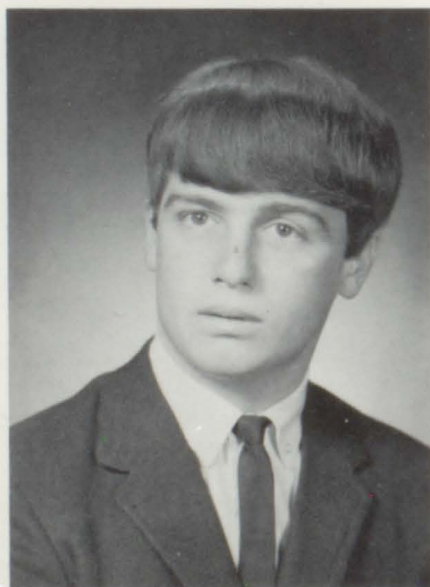
PRATT, SHIRLEY



PRETTI, RODNEY



RENEGAR, MARILYN



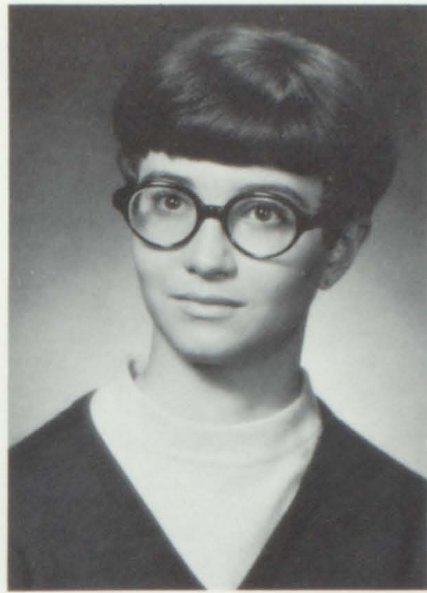
ROY, JIM



ROBERTSON, KAREN



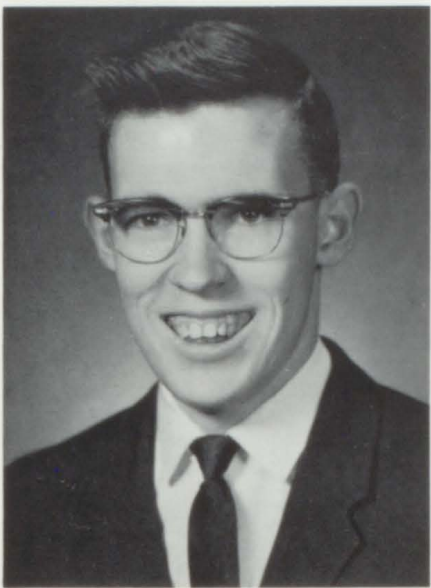
RODERICK, DAWN



SAMUELSON, CHRIS



SMITH, CONNIE



SYNDER, LEROY



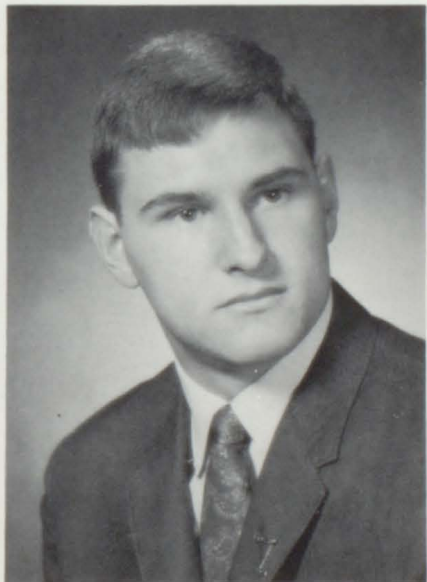
SPRICK, NANCY



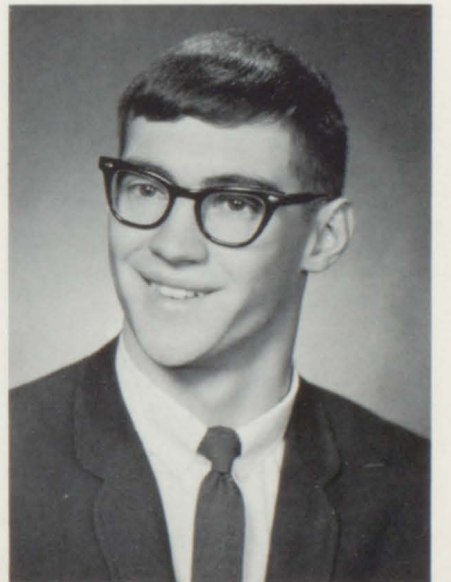
STEWART, SUZANNE



STITES, CYNTHIA



STUBLER, RICHARD



SWARTZENDRUBER, JAMES



TEKOUICICH, SUE JOE



WAGGONER, VICKIE



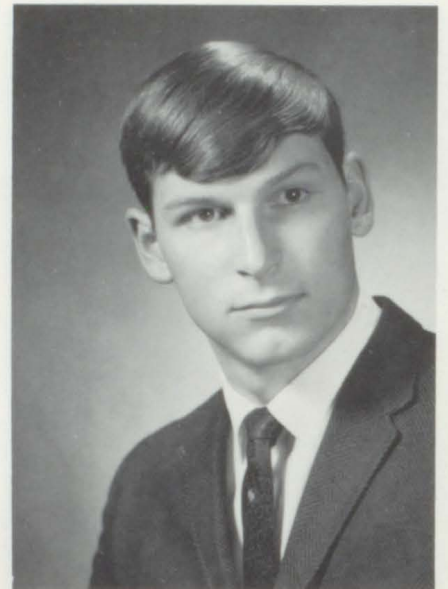
WALTERS, MARILYN



WARD, BERTA



WICKLUND, JAN

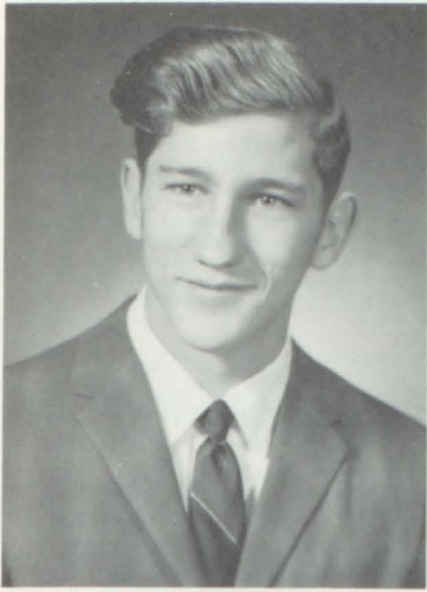


WILCOX, DAVE



WILSON, RICHARD





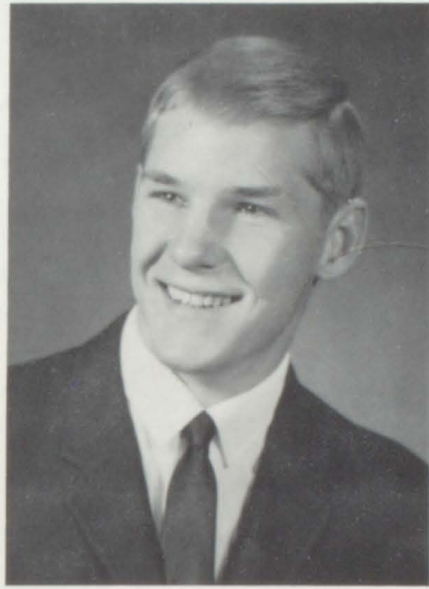
BIANCO, TOM



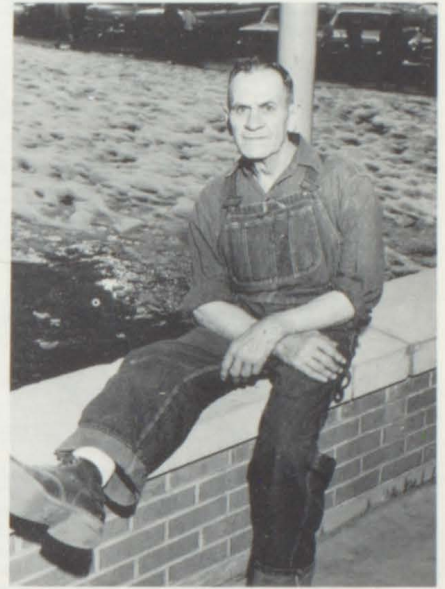
Scholarships were awarded to . . .



COLGLAZIER, JUDY



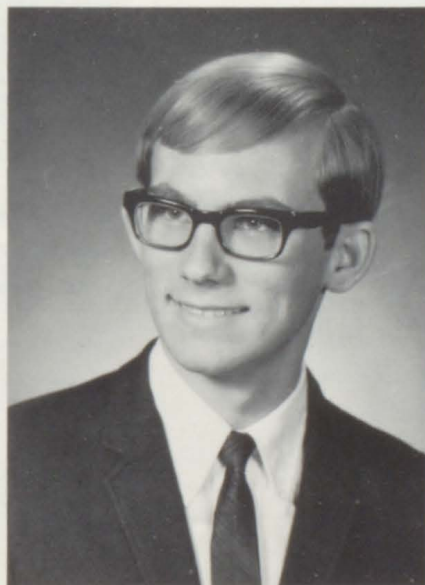
GALLAHER, MIKE



AMICHAUX, ARCHIE



SANDBERG, CINDY



SCHEER, ALBERT



SMITH, GLENN

SENIOR ACTIVITIES

Arnold, Cathleen Central 1; Pep Club 1, 2, 3, 4; Wrestling and Football Cheerleader 2, 4; Jr. Class Play 3; Ski Club 1, 3, 4; Chorus 4; Drama Club Historian 4; Stage Manager 4; Speech Activities 2, 3; Drill Team 3; P.E. Assistant 4.

Artaz, Dan Homecoming King 4; Football 2, 3, 4; Track 3, 4; Wrestling 2, 4; Science Club 4; G. Club 3, 4; G. Club Vice President 4; FTA 4; FTA Historian 4.

Bair, Donna GAA 1, 2; Chorus 3, 4; Jr. Class Play 3.

Beattie, Lorie Band 1, 2, 3, 4; Orchestra 1, 2, 3, 4; Chorus 1, 2, 3, 4; Chorus Accompanist 2, 3, 4; Student Council Representative 1; Ski Club 1; National Honor Society 3, 4; Student Council Secretary 2; Class Treasurer 3; Drama Club 4; Drama Club Secretary 4; Band Secretary 4; Drill Team 1, 3, 4; Drill Leader 4; Junior Class Play 3; Stage Band 2, 3; Pep Club 1, 2, 3, 4; Homecoming Attendant 2, 3; Top of the Nation Honor Band 3; All State Band 3; Twirler 2, 3, 4; Men's Double Quartet Accompanist 4; F.T.A. 3, 4; Student Council 1, 2; Solo and Ensemble 3, 4; Stars of Tomorrow Winner 4.

Bennett, Jim St. Joseph's High School, Atkinson, Nebraska 1, 2, 3; Track 1, 2; Basketball 1, 2, 3; Wrestling 4.

Betz, Sharon Chorus 1, 2, 3; Chorus Treasurer 3; Student Council Representative 2, 4; Junior Class Play 3; Senior Attendant Christmas Formal 4.

Bird, Sandra Librarian 3, 4; Pub Club 4; Pub Club President 4; Art Club 4; Art Club President 4.

Bissing, Terri Pep Club 1, 2, 3; Pep Club Assistant Secretary 1; Pep Club Treasurer 2; Pep Club Secretary 3; G.A.A. 1, 2, 3, 4; G.A.A. President 4; F.T.A. 4; Drill Team 2; Ski Club 2.

Black, Vickie F.H.A. 1, 2, 3, 4; Yampah Staff 3, 4; Pep Club 1, 2; Librarian 2, 3, 4; Drill Team 1.

Bradshaw, Dave Lakewood, Colorado, 1, 2; Carbondale, Colorado, 3; Track 3.

Butler, Susan Chorus 1, 2, 3, 4; Math Club 2, 3.

Cheedle, Nancy Rangely High School 1; Honor Society 4; Honor Society Treasurer 4; Drama Club 4; F.T.A. 4; Ski Club 4; Ski Club corresponding Secretary 4; Chorus 3, 4; G.A.A. 2, 3; Key Club Sweetheart 3; Christmas Formal Attendant 4; State Speech Meet 4; District Qualifying speech meet 4; Radio Program 4.

Coller, Seth Ski Club 2; Track 3; Football 3, 4.

Cook, Dave St. Joseph High, Michigan 2, 3; Chorus 4; Boy's Octet 4; Yampah Staff 4; Ski Club 4; F.T.A. 4; Drama Club 4; Drama Club Vice President 4; Plays 4; Radio Program 4.

Cox, Wendy Steamboat Spring, Colorado 1, 2; G.A.A. 3, 4; Pep Club 3, 4; Drill Team 4; Twirler 3; Drum Majorette 4; Orchestra 3, 4; Chorus 3, 4; Band 3, 4; Stage Band 4; Student Director 4; Top of the Nation Honor Band 4; Solo and Ensemble Contest 3, 4.

Colglazier, Judy Buena Vista 1, 2, 3.

Crutcher, John Drama Club 4; Key Club 1, 2; Basketball 1, 2; Ski Club 1, 2, 3, 4; Ski Club Vice President 4; Plays 3, 4; Math Club 2, 3, 4; Safety Club 3; G Club 3, 4; Speech Meets 4.

Davenport, Jim Monroe High School 1, 2; West Bloomfield High School 3; Drama Club 4; President of Drama Club 4; District Speech Meet 4; State Speech Meet 4; Men's Double Quartet 4; Radio Program 4.

Davenport, John Monroe High School 1, 2; West Bloomfield High School 3; Drama Club 4; School Plays 4; District Speech Meet 4; Ski Club 4; Men's Double Quartet 4; Chorus 4; Orchestra 4.

Delaney, Diane Chorus 1, 2, 3, 4; Band 1; Librarian 4; Librarian Vice President 4; F.H.A. 1; Pep Club 2; Jr. Class Play 3.

DeVries, Van Ranum High School 1; National Honor Society 3, 4; Football 2; Basketball 2, 3; Track 2; Safety Club 3; Math Club 2, 3, 4; Math Club Treasurer 4; Science Club 4; Science Club President 4; Key Club 2, 3, 4; Key Club Secretary 4; Class Vice President 3.

Dossigny, Gayla Class Historian 3; Pep Club 1; G.A.A. 2; Pub Club 2; Drama Club 4; F.T.A. 4; Junior Class Play 3; Drill Team 1; Plays 4; State Speech Meet 3; Speech Meets 2, 3, 4; Radio Program 4.

Dunsdon, Barry Football 1; Basketball 1, 2, 3, 4; Track 1, 2, 3, 4; State Track 3, 4; Christmas Formal Attendant 4.

Dunsdon, Michaele Junior Class Secretary 3; Drama Club 4; Student Play Director 3; Plays 4; Wool Growers 1, 2, 4.

Edson, Dennis Mountain Home High School, Idaho 2; Calistogo High School, California 1; Wrestling 2, 3, 4; G Club 3, 4.

Ferrin, Diana G.A.A. 1, 2, 3, 4; G.A.A. Sec-Treasurer 3; Ski Club 2, 4; Junior Class Play 3; Drama Club 4; Librarian 4.

Fisher, Judy Chorus 1, 2, 3; Pep Club 1, 2; Junior Class Play 3; G.A.A. 1, 2.

Gardner, Ric New Mexico Military Institute, Roswell, New Mexico 1; Bear Creek High School, Morrison, Colorado 2, 3; Drama Club 4; Plays 4.

Gilbert, Pat Palisade, Colorado 1, 2; Pep Club 1, 2; F.H.A. 1, 2; Glee Club 1, 2.

Gonzales, Mike

Greigo, Darlene G.A.A. 2.

Harrington, Ada Yampah Staff 4; Drama Club 4.

Hatfield, Fred Basketball 1; Wrestling 1.

Haushel, Sandra Peetz, Colorado 1, 2; Class Sec-Treasurer 1, 3; Class President 2; Pep Club 1, 2, 3; Pep Club President 3; F.H.A. 1, 2, 3, 4; Junior Class Play; Co-editor of Annual 3.

Haushel, Sheron Peetz, Colorado 1, 2; Student Council Representative 1, 3; F.H.A. 1, 2, 3; F.H.A. Vice President 3; F.H.A. Sec-Treasurer 2; Yampah Staff 3; Junior Class Play; Pep Club 1, 2.

Henderson, Doug Band 1, 2, 3, 4; Ski Club 1, 2, 3; Science Club 4; Sec-Treasurer Science Club 4; G Club 4; Wrestling 1; Track 2, 3; All State Band 4; Key Club 1, 2; Jr. Class Play 3.

Hogue, Ed G Club 2, 3, 4; G Club President 4; Junior Class Play 3; Track 1, 3; Wrestling 1, 2, 3; Football 1, 2, 3, 4.

Jackson, Ann Cheerleader 2, 3, 4; Homecoming Attendant 4; Math Club 4; Pep Club 1, 2, 3, 4; Chorus 1; All Conference Cheerleader 3, 4; Office 3, 4.

Jarboe, Roger Football 3; Basketball 2; Track 2.

Jaros, Pat Football 1, 2, 3, 4; Basketball 1, 2, 3, 4; G Club 2, 3, 4; Track 1, 2; Honorable Mention Basketball 4.

Jones, Artie Cheyenne, Wyoming 1; Pep Club 1; Latins Club 1; G.A.A. 3, 4.

Kennison, Judy Chorus 1, 2, 3; G.A.A. 1, 2, 3; President of G.A.A. 3; Vice President of G.A.A. 2.

Lake, Kathy Pep Club 1, 2, 3, 4; Drill Team 1, 3, 4; G.A.A. 1, 2, 3, 4; Drama Club 4; Plays 4; Yampah Staff 4; Chorus 3, 4; Wool Growers 1, 2, 3, 4; State Wool Growers 1, 2, 3.

Latson, Ed Student Council Representative 1, 4; Vice President of Class 2; Science Club 2, 4; Football 1; Track 3; Class Play 3, 4.

Lee, John Chorus 1, 2, 3, 4; Pub Club 2, 3; Junior Class Play 3; Pub Club Co-Editor 2; Spanish Instructor 4.

Lewis, Christine Pep Club 1, 2; Drill Team 1; Math Club 2, 3, 4; Vice President of Math Club 4; F.T.A. 1, 2, 3, 4; President of F.T.A. 4; Yampah Staff 2; Junior Class Play 3; Chorus 1, 2, 3, 4.

Lewis, Julie Band 1, 2, 3, 4; Chorus 1, 2, 3, 4; Orchestra 2; Ski Club 1, 2, 3; G.A.A. 1, 2, 3, 4; Pep Club 1, 3, 4.

Lemler, Wayne Band 1, 2, 3, 4; Vice President of Band 3; President of Band 4; Assistant 1, 2, 4; Vice President of Chorus 4; P.E. Assistant 4; Top of Nation Honor Band 3; Track 3, 4; Football 1, 2, 3, 4; All State Band 4.

Lyons, Ken

Main, Perry

Mestas, Dennis Student Council Representative 3, 4; National Honor Society 3, 4; Vice President of National Honor Society 4; G Club 3, 4; Football 1, 2, 3, 4; Basketball 1, 2, 3; All Conference Honorable Mention in Football 4; Track 1, 2.

Michels, Nancy Pep Club 1, 2, 3, 4; Drill Team 1, 2, 3; Drill Team Line Leader 2, 3; Assistant Drill Leader 3; Yampah Staff

Miller, Sherry Class Historian 3.

Mincer, Phyllis Pep Club 1, 2, 3, 4; Drill Team 1, 4; Wrestling Cheerleader 2; F.T.A. 3; Drama Club 4; Chorus 1, 2, 3; Junior Class Play 3; Student Director of Play 4; Spanish Assistant 4.

Mitchell, Linnea Chorus 1, 2, 3, 4; Chorus Treasurer 2; Pep Club 1, 2, 3, 4; Drill Team 2, 3, 4; Line Leader 2; Drill Leader 3; Orchestra 1; Vice President of Orchestra 1; Math Club 2, 3, 4; Secretary-Treasurer of Honor Society 3; President of Honor Society 4; Honor Society 3, 4; Class Play 3; Drama Club 4; Drama Club Plays 4; Class Historian 4; Student Council Representative 2.

Morris, Loretta Chorus 3, 4; Pep Club 2, 3, 4; F.H.A. 2, 3, 4; Corresponding Secretary in F.H.A. 3; District Secretary in F.H.A. 4; National Honor Society 3, 4; Drama Club 4; Junior Class Play 3; Drama Club Plays 4.

Moschner, Linda Cle Elum High School, Washington 1, 2; F.B.L.A. 4; President of F.B.L.A. 4; Drama Club 4; Junior Class Play 3; Drama Club Plays 4.

Mueller, Bette Chorus 1, 2, 3, 4; Chorus President 4; Pep Club 2, 3, 4; Ski Club 2; Orchestra 1; Algebra I Assistant 4.

Ochko, Mickie Pep Club 1.

Oldsen, Barbara Math Club 2, 3, 4; Class Secretary 4; Class Treasurer 2; Band 1, 2, 3, 4; Chorus 1, 2, 3, 4; Secretary of Chorus 3; Pep Club 1, 2, 3, 4; Assistant Secretary of Pep Club 3; President of Pep Club 4; Top of the Nation Honor Band 4; Christmas Formal Queen 4; Stage Band 4.

Pace, Janis G.A.A. 3, 4; Art Club 4; Drama Club 4.

Philpott, Tracy Football 2, 3, 4; Basketball 1, 2; G. Club 4; Wrestling 3, 4; Track 2, 3.

Pratt, Doug Class President 2, Vice President 4; Key Club 1, 2, 3, 4; Treasurer of Key Club 3; President 4; Band 1, 2, 3, 4; Sec-Treasurer of Band 2; Chorus 1, 2, 3, 4; Treasurer of Chorus 3, President 4; Stage Band 4; Basketball 1, 2, 3, 4; Track 1, 2, 3, 4; Christmas Formal King 4; Red and White Day King 4; G Club 4; Key Club Convention Delegate 3; Cross Country 1.

Pratt, Shirley Band 1, 2, 3, 4; Chorus 3, 4; Pep Club 3, 4; Ski Club 3, 4; Drama Club 4; Junior Class Play 3; G.A.A. 3; Demon Mascot 4; All State Honor Band 4; Top of the Nation Honor Band 4; Solo and Ensemble 3, 4.

Pretti, Rodney Class Historian 1; Football 1, 2, 4; Wrestling 1, 2; Band 1, 2, 3, 4; Chorus 1, 2.

Renegar, Marilyn Cheerleader 2, 3, 4; Band 1; Chorus 1, 2, 3, 4; Pep Club 1, 2, 3, 4; Ski Club 1, 2, 3; G.A.A. 2, 3, 4.

Roy, Jim Student Council Representative 1, 2, 3; Student Council President 4; Homecoming Attendant 4; All Conference Football 4; Football Co-Captain 4; Football 1, 2, 3, 4; Basketball 1, 2, 3, 4; Track 1, 3; Basketball Captain 4; All Conference Basketball 4.

Robertson, Karen Pep Club 1, 2, 3, 4; Math Club 2; F.T.A. 2, 3; Pep Club Vice President 4; F.T.A. Treasurer 2; Class Treasurer 4; Drama Club 4; Yampah Staff 4; Drill Team 4; G.A.A. 1; Band 1, 2, 3, 4; Twirler 4; Student Assistant 4; Junior Class Play 3.

Roderick, Dawn Pep Club 1, 2, 3, 4; Homecoming Queen 4; Ski Club 4; Drill Team 1, 2, 3, 4; G.A.A. 3, 4; F.H.A. 1; Art Club 4.

Samuelson, Chri F.T.A. 2, 3, 4; F.T.A. Historian 2, Treasurer 3, Vice President 4; Ski Club 2, 3, 4; Ski Club President 4; Yampah Staff 1, 2, 3; Play 3; Drama Club Plays 4; Art Assistant 3, 4; Gym Assistant 3, 4; Pub Club; Radio Program 4.

Scheer, Albert Student Council Representative 4; Radio Program 4; Plays 4; Drama Club 4; Ski Club 4; Band 1; Basketball 1; Track 4.

Sprick, Nancy G.A.A. 3, 4; Pep Club 2, 3; Ski Club 2; Wool Growers 2, 3; F.T.A. 4; Librarian 2; Office Girl 3; Drama Club 4.

Smith, Connie F.H.A. 1, 2, 3.

Stewart, Suzanne Pep Club 1; G.A.A. 3, 4; Ski Club 1, 2; Librarian 4; Drill Team 1; Art Assistant 4; Junior Class Play 3.

Stities, Cynthia Pep Club 1, 2, 3, 4; Chorus 2, 3, 4; Yampah Staff 3, 4; Yampah Staff Editor 4; Librarian 2, 3; Librarian President 2, 3; Wool Growers 1, 2, 4; District 1st Place 4; Speech District Qualifying 3, 4; State Speech Meet 4; Typing Assistant 4.

Stubler, Richard Class President 1, 4; Student Council Vice President 3; League Student Council Vice President 4; Homecoming Attendant 2, 3; All Conference Football 4; Football 1, 2, 3, 4; Basketball 1, 2, 3, 4; G Club 2, 3, 4; F.T.A. 4; Track 1, 2, 3; Science Club 4; Football Co-Captain 4; Honorable Mention All-State Football 4; Honorable Mention All State Basketball 4.

Swartzendruber, Jim Student Council Representative 1, 2, 3; Track 1, 2; Football 1, 2, 3, 4; Basketball 1, 2, 3, 4; G Club 2, 3, 4; G Club Secretary-Treasurer 4; Homecoming Attendant 1; P.E. Assistant 4; All Conference Football 4; All Conference Basketball 3, 4; Honorable Mention All State Football 4; Safety Club 1.

Synder, LeRoy Golden Senior High School 1, 2; Drama 4; Audio Visual Aid 3, 4; Ski Club 4; Librarian 4.

Tekoucich, Sue Jo Class Secretary 2; Class President 3; F.T.A. 4; G.A.A. 2; National Honor Society 3, 4; Math Club 4; Math Club Secretary 4; Math Assistant 4.

Walters, Marilyn Drill Team 1; Ski Club 1, 2; Pep Club 1, 2, 3, 4; Librarian 3; Office Girl 2; Drama Club 4; Biology Assistant 4; Red and White Day Queen 4.

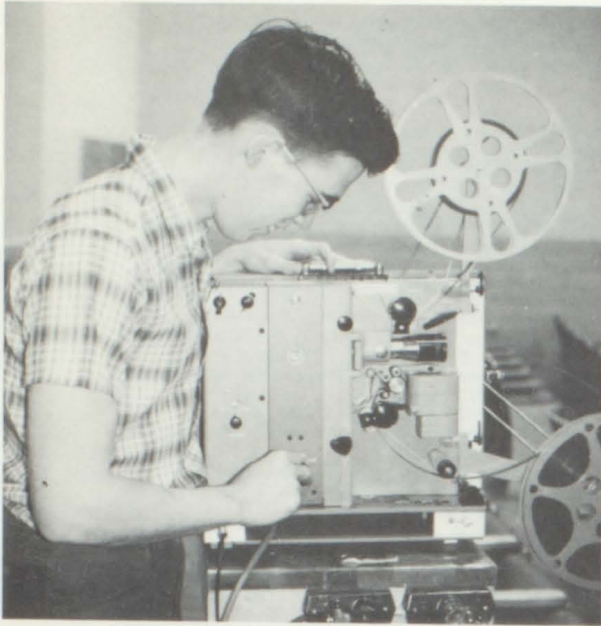
Ward, Berta McCoy High School 1, 2.

Wicklund, Jan G.A.A. 1.

Wilcox, Dave Football 1, 4; F.T.A. 4.

Wilson, Richard Yampah Staff 2, 3.

Waggoner, Vicki Wool Growers 4; Librarians 4; G.A.A. 1, 2; Pep Club 1, 2; F.H.A. 2.



Leroy at work.



I lost my white hat!



Guess who!



What can I do with coat?



Karen



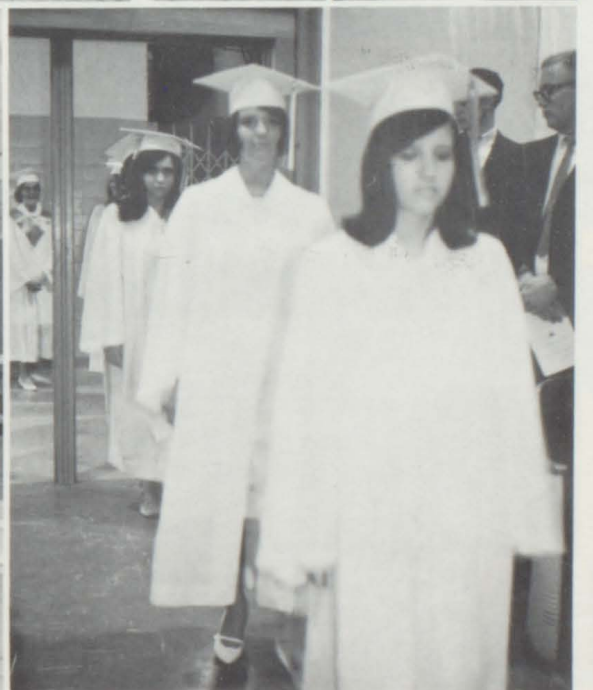
Chris?



See my toes!



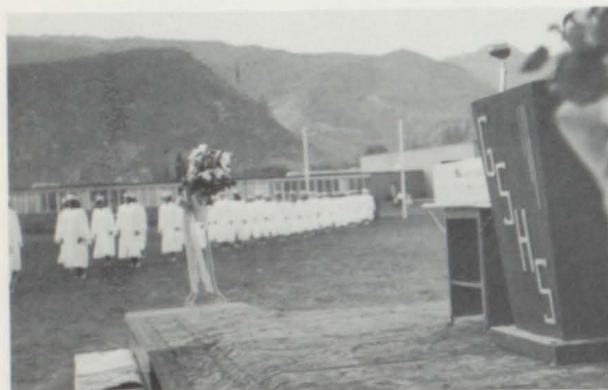
Psychology class combined!

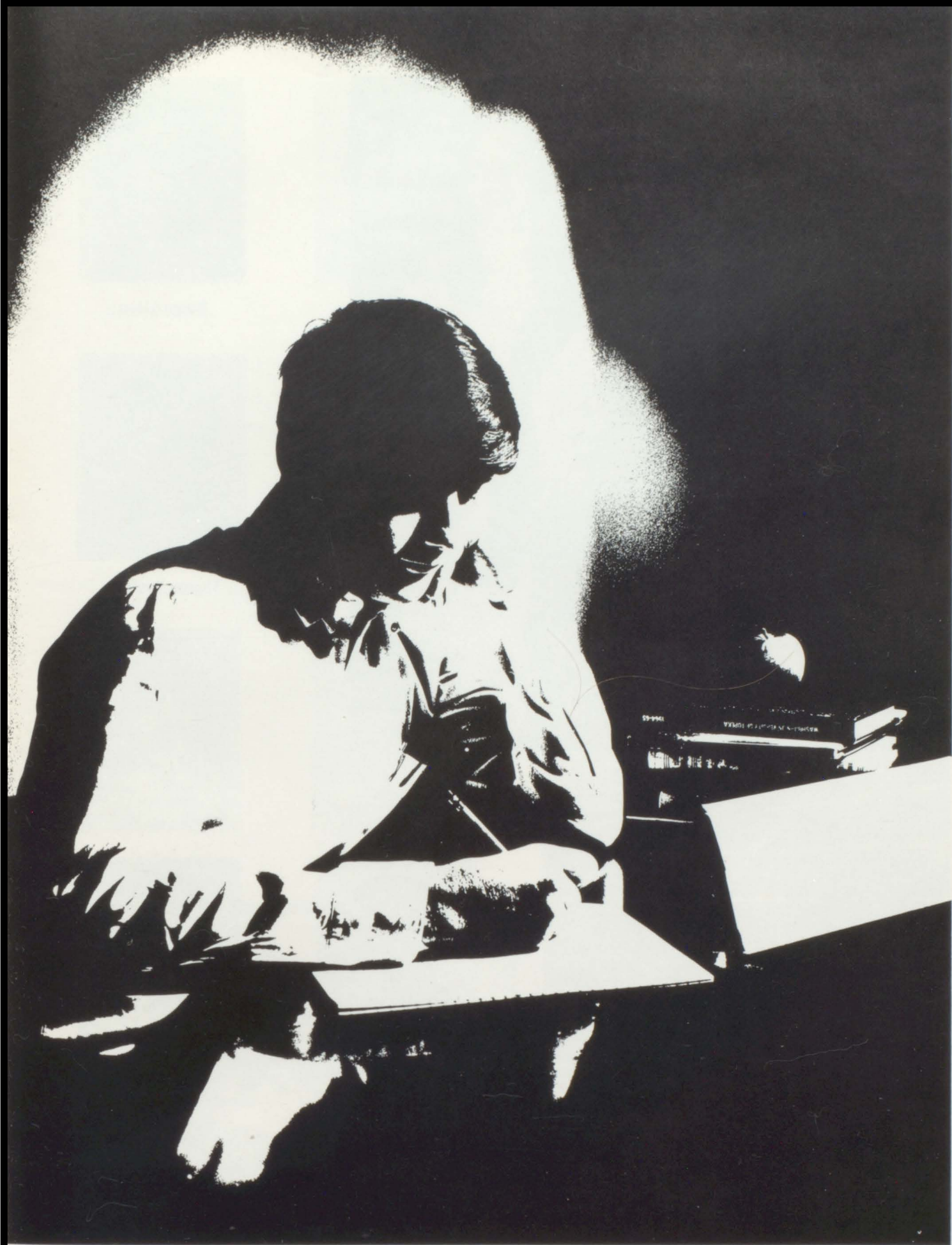


GRADUATING CLASS OF 1967



Nancy and Linnea





JUNIORS



Adrian Rippy, President
 Dan Gallacher, Vice President
 Maritza Bershenyi, Secretary
 Jane Davenport, Treasurer



Betty Allan



Sharon Amiday



Martha Anderson



Sally Arthur



Randy Baker



Kathy Balcomb



Harry Bates



Jay Bedford



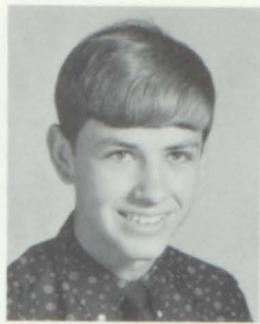
John Bianco



Maritza Bershenyi



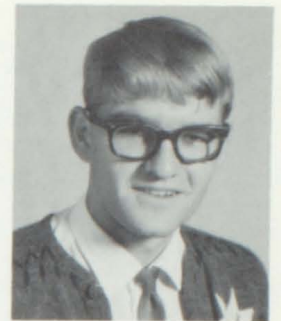
Sandra Botkin



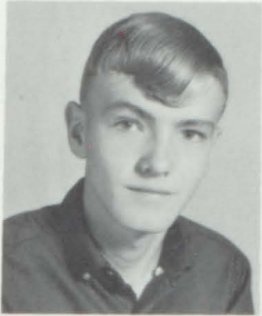
Mike Bowles



Annette Bryce



Joe Budd



Bill Caskey



Cindy Chambers



Kathy Coryell



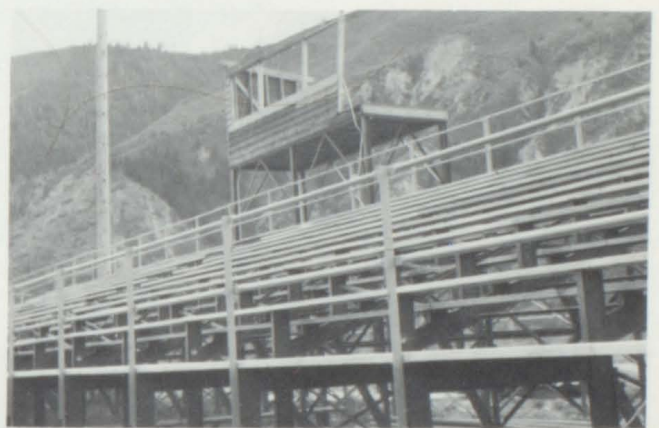
Cindy Craig

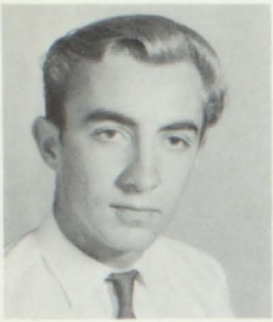


Brenda Crawford



Kathy Dalton





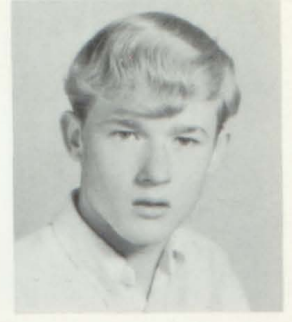
Terry Dalton



Jane Davenport



Marsha Dunsdon



Edward Duplice



Jeannie Egger



Learning how to wash hands??????



Homecoming 1966. . .



Barbara Embry



Norma Ewy



Linda Ferrin



Danny Gallacher



Darryl Gammill



Terry Gardner



Trudy Gardner



Donna Garrison



Sally Geib



Shirley Grywatch



Rodney Guccini



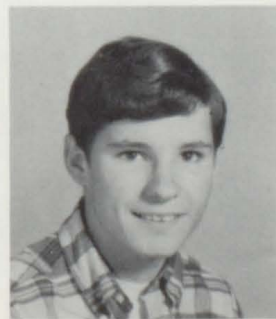
Marcia Harrington



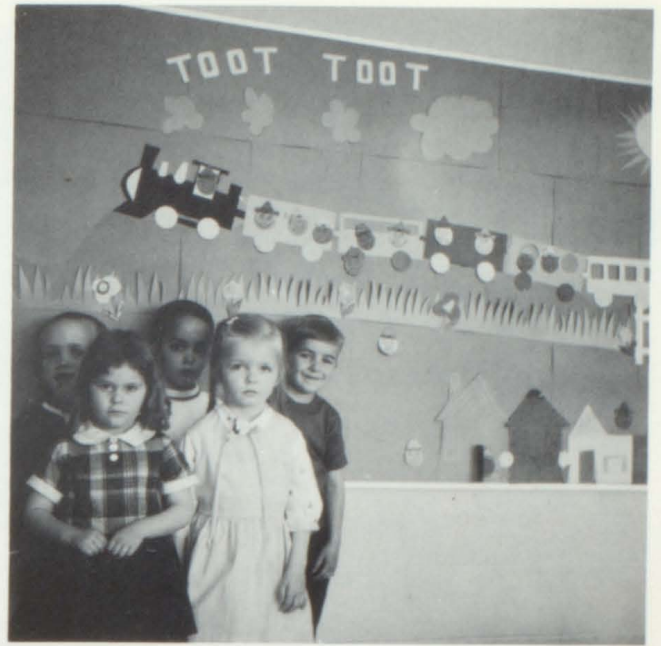
Tom Harrington



George Hartline

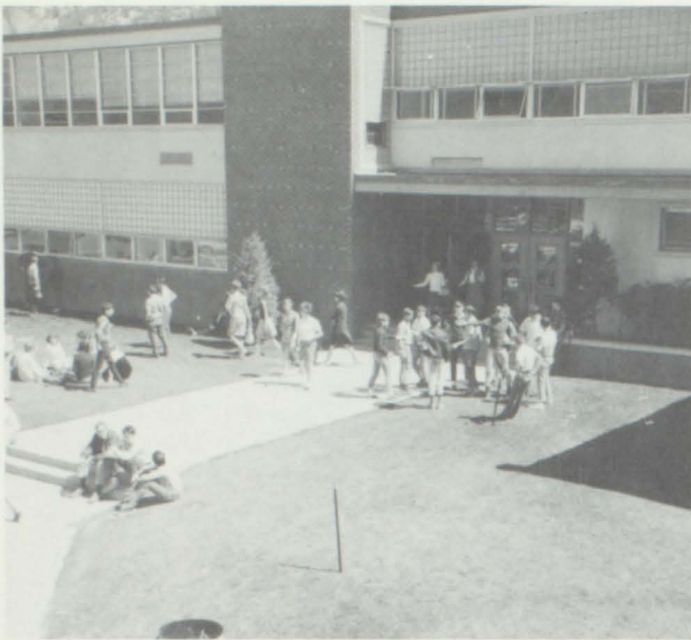


Gary Hoffman



Juniors?????





Lunch break!!!



I can't see the board from here!!!



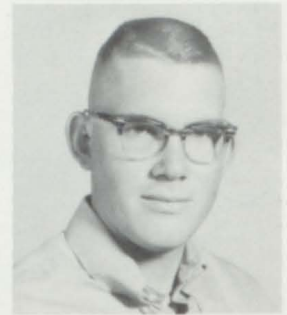
Bill Jackson



Thersa Jackson



Larry Kay



Bob Kelly



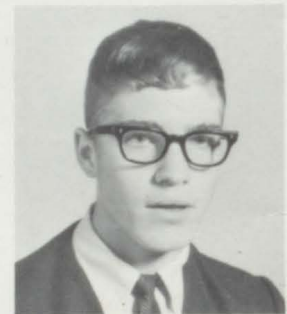
Danny Kelly



John Kosmatin



Sue Lesh



Chuck Lewis



Tina Lopez



Dolores' Martinez



Now where's my partner. . . ?



G.S.H.S. Cheerleaders??????????



Carman Mayfield



Kathy McClure



Linda Murdock



Scott Nieman



Penny Nixon



Dennis Norvell



Sig Olsen



David Osborne



The mafia at G.S.H.S.



Chris Pappas



Donald Parkison



Sharon Peterson



Joyce Phillips



Dixie Pierce



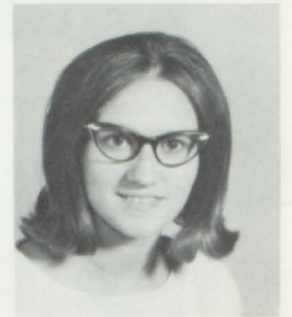
Krissy Poer



Student Council 1967



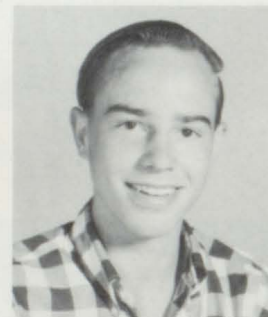
Rebbecca Prehm



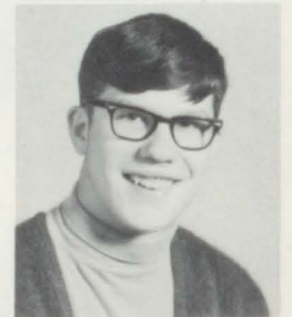
Debbie Pruett



F.H.A. Installation



Lynn Purdy



Kenny Rhodes



Adrian Rippy



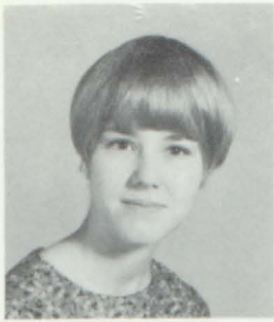
Gary Roberts



Bob Roy



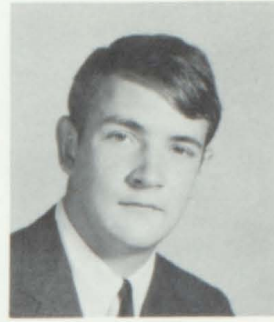
Linda Saathoff



Dana Sebastian



Barbara Seneff



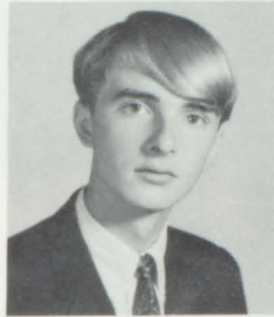
Chuck Sheehy



Marlyse Smith



Sharon Stephenson



Gregg Stradiotto



Merlin Streber



John Stuben



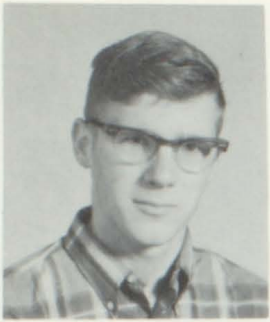
Kathy Stull



Pam Taylor



John Tessadri



Terry Thompson



Verna Tibbetts



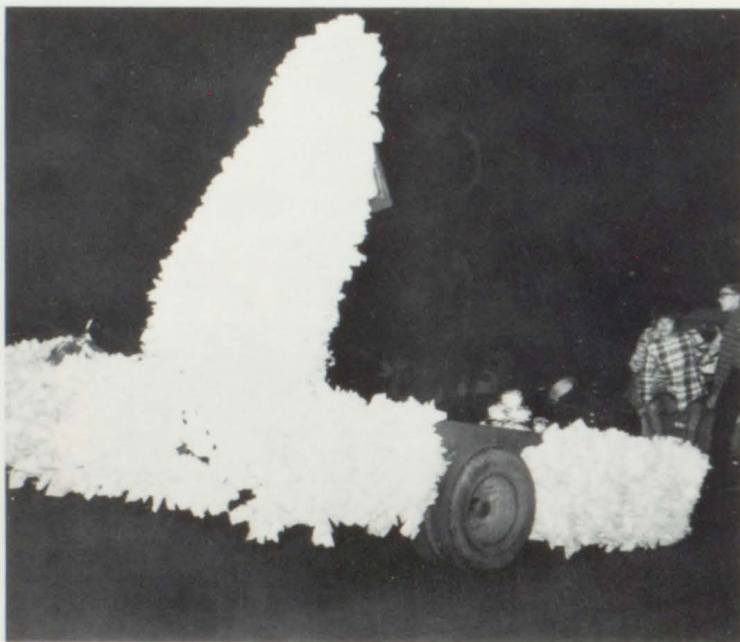
Jo Anne Vigil



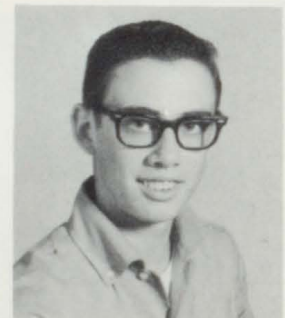
Celeste Trembly



Mike Trevethan



Gerald Waters



Warren Wilcox



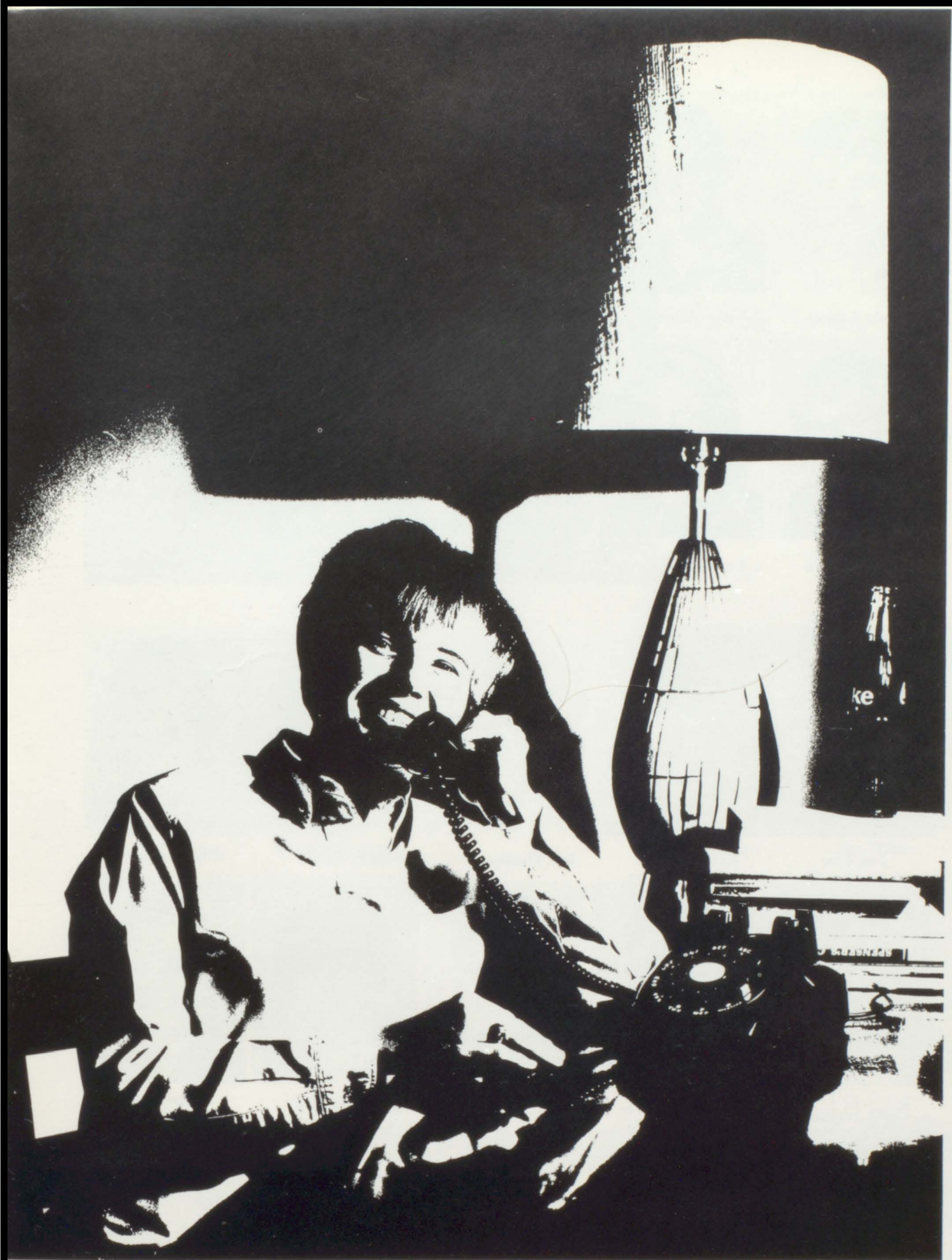
Lois Wilmoth



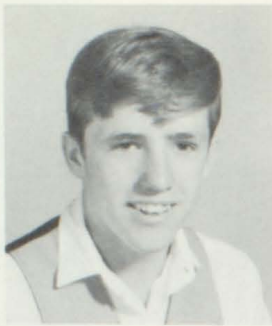
Curtis Worline



Maureen Worrell



SOPHOMORES



Randy Adams



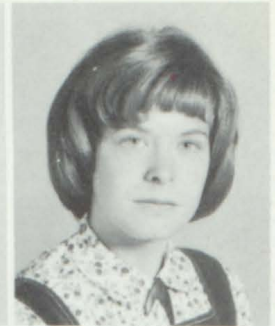
Steve Albro



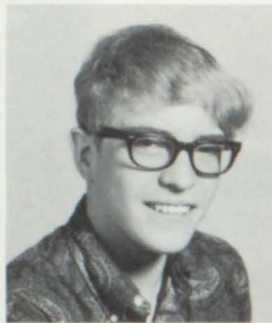
Peggy Allison



Pat Amiday



Connie Anderson



Norman Arbor



Bonnie Artaz



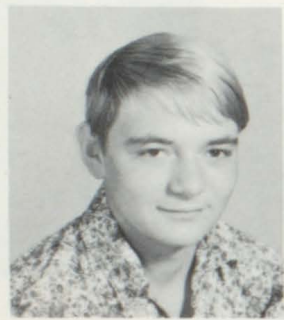
Linda Baker



Monte Baker



Judy Bershenyi



Jim Blue



Randy Brown



Bill Brudigam



Sandra Budd



Roy Cerise



Peggy Chandler



Charles Chapman



Jim Corsentino



Kathy Collins



Jim Cook



Paula Cydlo



Diane Dalpez



Bill Dodds-Scott



E. J. Downing



Edythe Duplice



John Neil, Pres.
 Dick Piffer, Vice-Pres.
 Pam Stites, Sec.
 Bruce Webster, Treas.



Linda Fletcher



Mary Fulbright



Rick Gilbert



Sue Glenn



Dan Godeski



Jody Godeski



Doreen Goedde



Don Grange



Gary Grimes



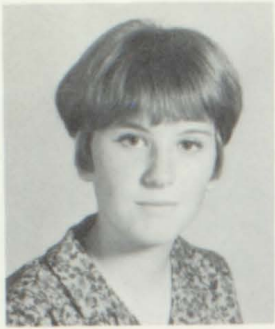
Craig Henderson



Herbert Gardner



Robbie Heuschkel



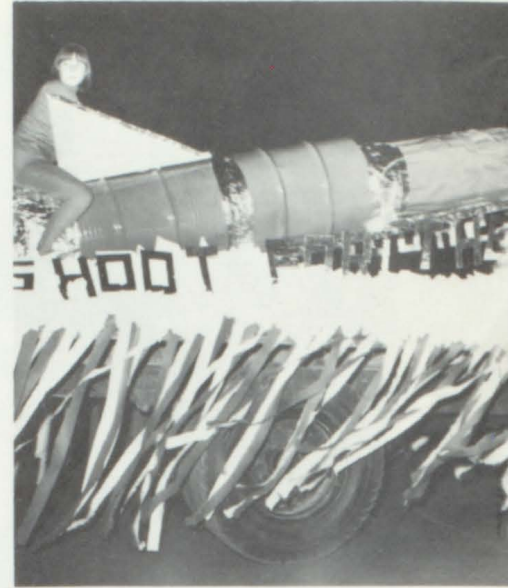
Margaret Hill



Patricia Hill



Jim Hitt



Brad Hoffman



Holly Hollingsworth



Karen Hopkins



Sharon Hudiburgh



Westley Hunter



Pam Jauregui



Jackie Johnson



Dorthy Ketterman



Debbie Lake



Steve Laven



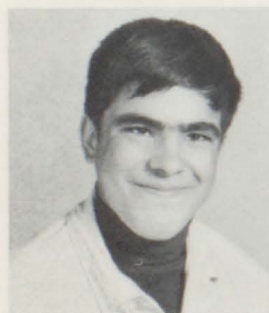
Charles Liggett



Marsha Lopez



Mary Lou Maben



Robert Maddalone



Dee Mangnall



Arlon Martin



Nick Massaro



Colleen McBreen



Kathy McDonald



Pat McGehee



Barbara McGuire



Gary Mooney



Linda Morris



Duane Mortensen



John Neil



Kathy Neilson



Debbie Osborne



Terry Paddock



LaDonna Perkins



Dan Petre



Ken Philpott



Dick Piffer



Terry Pike



Carla Porter



Jana Porter



Larry Prehm



Mike Prellwitz



Pat Quigley



Jon Reed



Debbie Reeves



John Reeves



Larry Rhodes



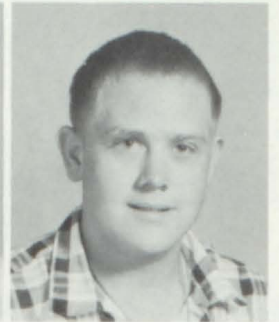
Debbie Robertson



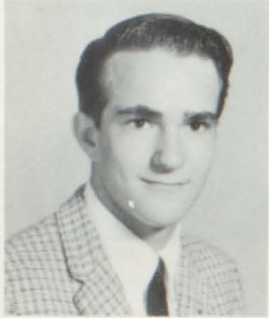
Lauraine Samuelson



Don Shipley



Pat Shuster



George Smith



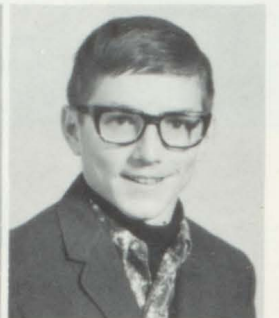
Querida Skidmore



Sharon Stephenson



Pam Stites



Dale Strode



Lois Stull



Beth Terry



John Thompson



Bruce Vanderhoof



Vicki Veltus



Tom Verdieck



Peggy Vidakovich



Tom Viehe



Laura Vierheller



Elaine Vigil



John Waller



Bruce Webster



Sue Wheeler



Virginia Whitmer



Kirk Willardson



Darrell Williams



Terry Wilson



Jeff Woods



Roger Yoder



Theresa Zancanella



Larry Zimmer



Dennis Zwickl





Typical Sophomores Scenes





FRESHMEN



Larry Adams



Patricia Allen



Sharon Alsbury



Cheryl Alsdorf



Angela Anderson



Thomas Avena



Darlene Bair



Jack Baker



Ricky Baker



Paul Bauer



Cari Beatti



Kirk Beatti



Jody Bedford



Mike Bennett



Lynn Bissing



Cheryl Black



Debbie Bosco



Cindy Bridgewater



Shannon Brown



Bonnie Brudigam



Carol Bryce



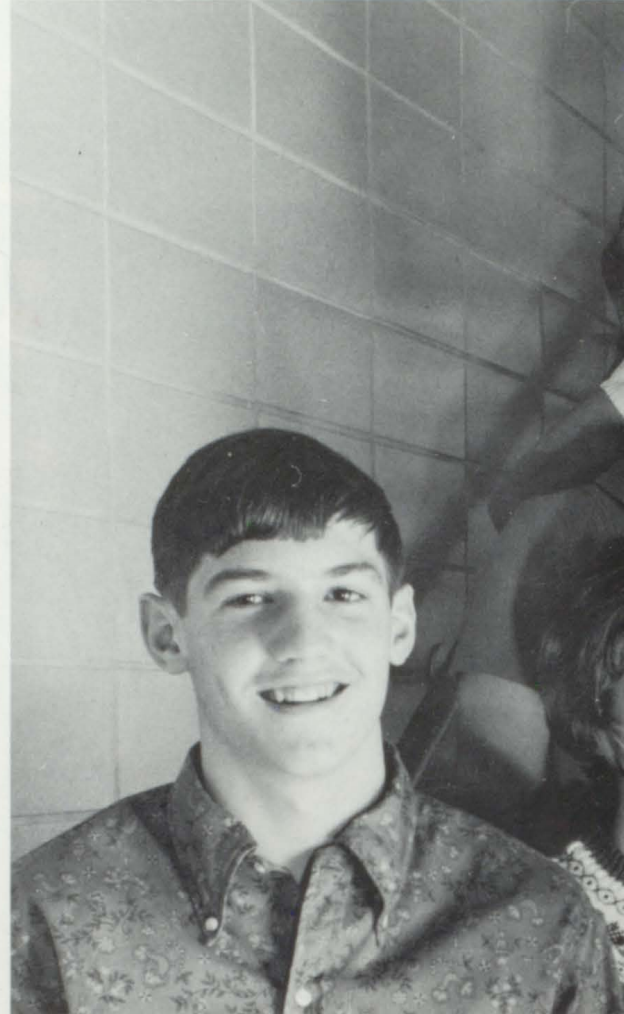
Bill Bullock



Chris Campbell



Donna Carlson



S. Stwartzdruber
P. Pratt
J. Nadon
J. Seneff
A. Durrett

President
V. President
Secretary
Treasurer
Historian



Kirk
Carlson



Julia
Carrigan



Janis
Crawford



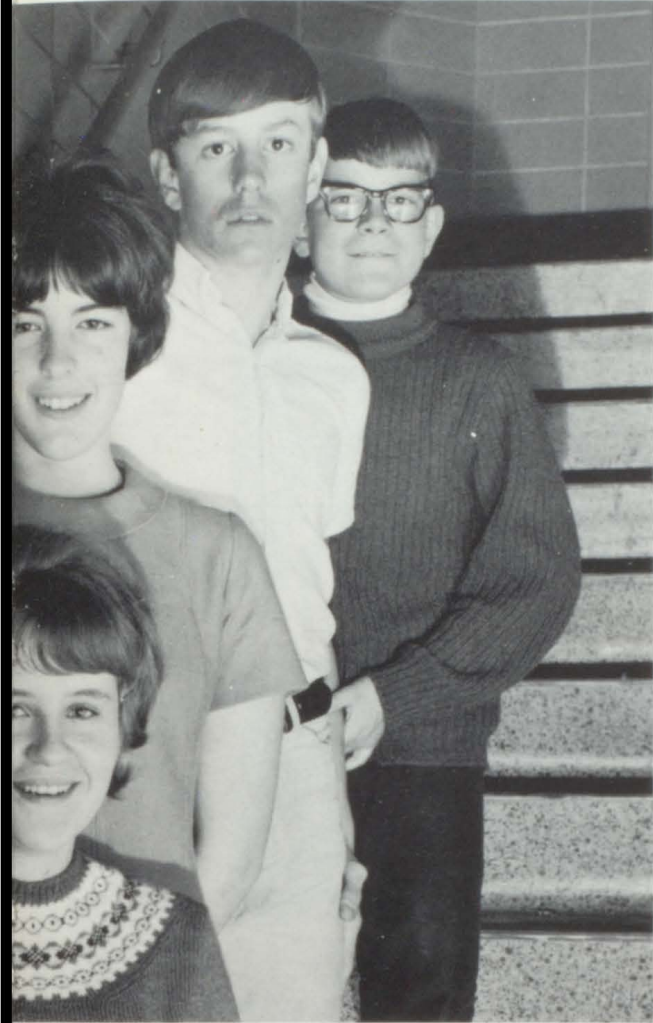
Lee
Crutcher



Mike
Dalton



Cheryl
Delsas



Peggy
De Vries



Terry
Doose



Peggy
Dumont



Beth
Dunham



Anthony
Durette



Nancy
Fuast



Rauna
Fitzgerald



Divian
Franke



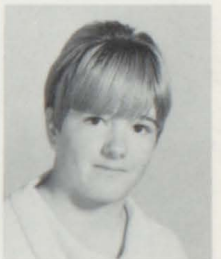
Tom
Fulton



Mike
Gallacher



Walt
Gann



Marilee
Gardner



Harold
Gardner



Bob
Gardner



Janet
Geib



Vicki
Gilbert



Debbie
Goedde



Debbie
Gregg



Joeline Guengerich



Tammy Haffe



Rodney Halford



Kim Harden



Kurma Hartline



Robert Harding



David Healy



Tom Henderson



Joyce Heuschkel



Ralph Holmes



Gary Hollub



Carol Hostettler



Karen Huchingson



Doris Hyatt



Carla Janzen



Gale Johnson



Phillip Jones



Malcomb Jolly



Martie Latson



Margo Lawrence



John Lesh



Carol Lewis



Mark Lyons



Kathy Markum



Jim Markum



Gregg Marney



John Martin



Patricia Martinez



Harold Martinez



Darlene Mattivi



Darryl Mattivi



Sandra McLaughlin



Judy Mestas



Michelle Morgan



Mike Morelli



Mary Muse



Jean
Nadon



Laura
Neumann



Robert
Orr



Rocky
Pappas



Bill
Phillips



Bill
Phorte



Kathy
Plum



Peggy
Pratt



Patty
Pruett



Irene
Quintana



Clark
Rand



Joyce
Rew



Rex
Rhodes



Robert
Roberts



Janet
Rippe



Terry
Rippe



Angela
Rosa



Jim
Rosa



David
Roy



Bob
Saathoff



Curtis
Saffeels



David
Samuelson



Mark
Scarrow



Gwynn
Schroder



Tim
Schif



Wayne
Shelton



John
Seneff



Kristy
Smith



Randy
Smith



Valerie
Spencer



Mary
Stowe



Patty
Strohe



Steve
Swartzendruber



Georgeann
Tekoucich



Ann
Vanderhoof



Doug
Van Gallen



Vicki
Waggner



Georgia
Ward



Ray
Watson



Duane
Webster



Skip
Westlake



Lyle
Whitmere



Mike
Wright



Jennifer
Young



Pam
Zwickle







going down?



Freshmen tests



This the place



that way



Frosh fashions



bonfire before



whose angles



chow time



what's for me



first homecoming



Teachers' conference



Freshmen picnic



summer skiing



mod look





SCHOOL LIFE

DRAMA CLUB MEMBERS

D. Ferrin, T. Lopez, J. Phillips, C. Chambers, K. Neilson, L. Morris, M. Anderson, M. Latson, T. Thompson, J. Lee, D. Cook, N. Sprick, N. Ewy, A. Harrington, P. Mincer, L. Moschner, K. Lake, L. Mitchell, P. Martinez, D. Goedde, G. Dossigny, J. Cook, S. Pratt, L. Snyder, L. Beattie, J. Davenport, J. Davenport, J. Davenport, K. Balcomb, J. Porter, V. Veltus, N. Cheedle, A. Scheer, M. Dunsdon, G. Stradiotto, R. Gardner, J. Crutcher, J. Bershenyi, D. Gallacher, M. Lopez, S. Nieman, L. Vierheller,



YOU CAN'T TAKE IT WITH YOU



Darrell, Kathy, Chris and Greg



Linnea and John



Danny and Loretta



Mr. and Mrs. Allen



Eddie and Albert

CINDERELLA



Kathy, Jane, Michael and Verna



Dave, John, Linnea, Danny, Cheryl, Verna



Dave and Jim



Best Dancers: Chris Samuelson and Jim Davenport

Best Costumes: Phyllis Mincer, Randy Adams





Homecoming Royalty for 1966-67

Queen Dawn Roderick
 King Dan Artaz
 Senior Attendant Anne Jackson
 Senior Attendant Jim Roy
 Junior Attendant Darryl Gammill
 Junior Attendant Adrian Rippey
 Sophomore Attendant Debbie Lake
 Sophomore Attendant Dick Piffer
 Freshman Attendant Carol Lewis
 Freshman Attendant Steve Swartzendruber

King Dan and Queen Dawn



Homecoming Dance 1966



Queen Dawn



Senior Attendant Anne et al



The Band played on!!!



Bonfire 1966



1966 Snakedance

CHRISTMAS FORMAL



L. to R.: Barry Dunsdon, Sharon Betz,
Queen Barbara Oldsen, King Doug Pratt,
Nancy Cheedle, Wayne Lemler.



Queen Barbara Oldsen
King Doug Pratt

SADIE HAWKINS



Carmen and Jim?



Linda and Eddie



Sam and Lee



Sweetheart Dance
Queen Jane Davenport
King Darryl Gammill



You Little Cuties!



Red & White Day
Queen Marilyn
Walters
King Doug
Pratt



Queen Anne Jackson
King Barry Dunsdon

JUNIOR-SENIOR PROM

AWARDS DAY



Home Nursing Awards



G.A.A. outstanding Members



Track Letters and Awards



Track Trophies



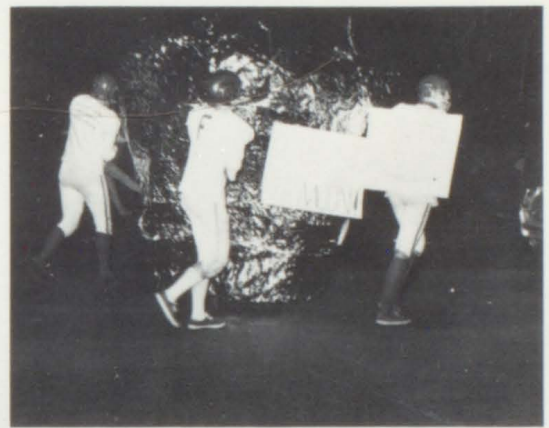
Farewell to long time custodian Archie Amichaux



Most Outstanding Junior Maritza Bershenyi

YAMPA STAFF

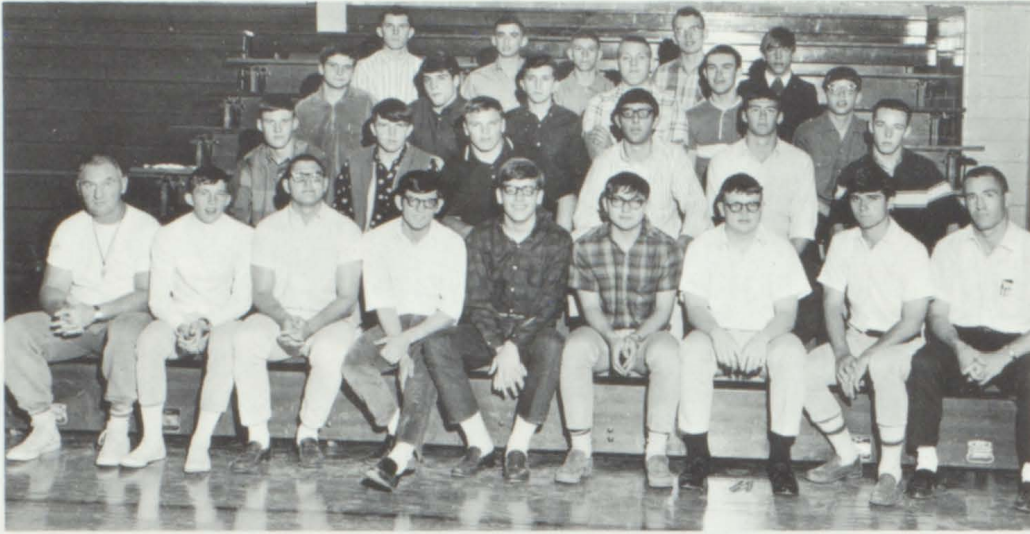
Left to right
 David Osborne
 Cindy Stites
 Dave Cook
 Ada Harrington
 Linda Moschner
 Carol Bryce
 Connie Anderson
 Jana Porter
 Norma Ewy
 Sue Glenn
 Karen Robertson
 Bonnie Artaz
 Vicki Black
 Pam Stites
 Debbie Lake
 Mr. Whitehair,
 Sponsor



Left to right: David Osborne - Business Manager, James A. Whitehair - Sponsor, Cindy Stites - Editor.

Hard Workers All!!!!

G - CLUB



S. Lavin, G. Waters, D. Godeski, M. Trevethan, D. Mortenson, D. Henderson, L. Kay, T. Harington, S. Neiman, D. Pratt, J. Crutcher, T. Philpot, R. Heuschkel, E. Houge, P. Jaroz, J. Swartzendruper, D. Edson, Coach Stubler, D. Gammill, R. Stubler, D. Artaz, J. Neil, D. Piffer, J. Hitt, D. Mestas, Coach Miller

F.T.A.



D. Artaz, L. Beattie, S. Tekoucich, P. Stites, M. Bershenyi, R. Stubler, Sponsor Mrs. Stapp C. Anderson, L. Samuelson, N. Sprick, C. Lewis, N. Cheedle, C. Pappas, C. Samuelson, L. Willmeth, not shown D. Cook

KEY CLUB



J. Thompson, J. Neil, C. Henderson, B. Webster, J. Hitt, M. Lyons, T. Verdieck, D. Strode, T. Viehe, B. Bullock, K. Beattie, D. Parkison, D. Osborne, D. Pratt, D. Gammill, C. Lewis, V. DeVries, B. Vanderhoof, D. Petre, Sponsor Mr. Wagner

F.H.A.



M. Anderson, P. Jaurequi, L. Fletcher, M. Maben, P. Zwickl, K. Hartline, C. Black, P. Martinez, Theresa Zancanella, Sponsor Mrs. Graves, D. Dalpez, B. Terry, V. Whitmer, D. Franke, Q. Skidmore, P. Quigley, M. Dunsdon, C. Bryce, L. Baker, L. Morris, L. Morris, L. Ferrin, R. Prehm, L. Perkins, S. Grywatch, J. Davenport, K. Coryell, P. DeVries

STUDENT COUNCIL



Top to bottom, Left to right: J. Naden, J. Rippy, N. Faust, C. Beattie, C. Janzen, S. Swartzendruber, M. Hill, J. Hitt, P. Vidakovich, D. Petre, C. Lewis, A. Rippy, T. Jackson, M. Bershenyi, D. Gammill, Mr. Daniels, Sponsor, A. Scheer, S. Betz, D. Mestas, J. Roy, E. Latson

SKI CLUB



Bottom, Left to right: T. Doose, M. Streber, K. Beattie, L. Crutcher, D. Samuelson, J. Crawford, S. Pratt, C. Henderson, C. Saffeels Row two: Sponsor, Mr. Piper, J. Seneff, T. Verdieck, A. Vanderhoof, J. Phillips, N. Cheedle, C. Samuelson, B. Seneff, D. Sebastian, M. Gallagher, D. Cook, D. Ferrin, L. Rhodes, Sponsors: Mr. Wagner, Mr. Frink Row three: C. Campbell, N. Massaro, C. McBreen, C. Rand, J. Lesh, G. Roberts, B. Bullock, J. Budd, C. Lewis, D. Osborne, D. Gammill, L. Samuelson, S. Nieman, L. Murdock, S. Olsen, J. Crutcher, L. Synder, R. Gardner, J. Hitt.

PUB CLUB

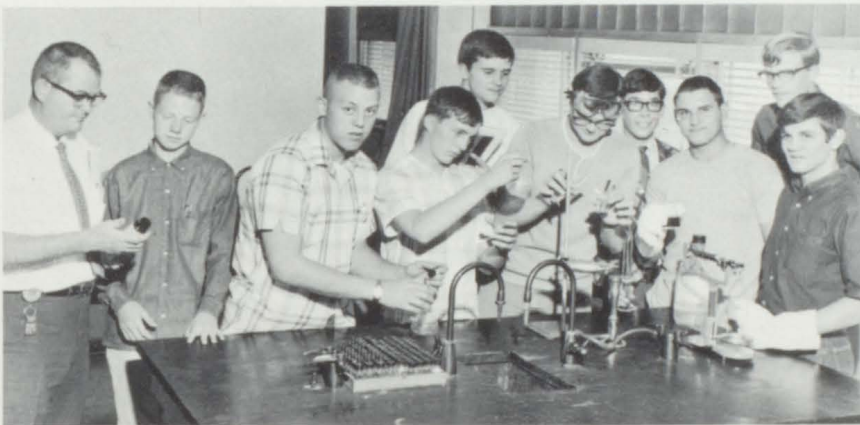
MATH CLUB



Mrs. Nordhausen and Sandi Bird



L. to R. C. Lewis, Mr. Lyons, S. J. Tekoucich, V. DeVries, D. Sebastian, L. Mitchell, A. Bryce, Mr. Miller.



SCIENCE CLUB

L. to R. Mr. Jones, J. Steuben, S. Niemann, D. Gammill, D. Henderson, V. DeVries, D. Osborne, R. Stubler, E. Latson, and D. Artaz.

ART CLUB

L. to R. B. Embry, S. Bird, T. Lopez, K. Poer, S. Brown and J. Phillips.



PEP CLUB



Cheerleaders l. to r.: P. Chandler, A. Jackson, C. Mayfield, M. Renegar, C. Arnold. Pep Club, first row, l. to r.: K. Beattie, D. Carlson, S. Wheeler, M. Worell, L. Beattie, L. Mitchell, W. Cox, P. Pratt, K. Stull, B. Embry. Second row, l. to r.: D. Goedde, D. Pierce, D. Pruett, K. Poer, B. Seneff, A. Rippy, K. Balcomb, P. Mincer, K. Robertson, H. Hollingsworth, L. Samuelson, P. Vidakovich. Third row, l. to r.: P. Pruett, N. Ewy, K. Hopkins, L. Morris, A. Jackson, J. Porter, T. Wilson, D. Wilmoth, P. Martinez, S. Glenn, N. Milosevich. Fourth row, l. to r.: P. Dumont, K. Hutchingson, L. Wilmoth, C. McBreen, D. Lake, D. Ketterman, P. Allison, J. Johnson, K. Collins, C. Anderson. Fifth row, l. to r.: J. Nadon, C. Stites, A. Anderson, K. Hartline, C. Bryce, V. Spencer, D. Osborne, L. Fletcher, K. Robertson. Sixth row, l. to f.: C. Alsdorf, J. Geib, S. Pratt, G. Schroder, P. Stites, V. Veltus, B. Oldsen, K. Pappas, P. Allen, J. Crawford.

DRILL TEAM



First row, l. to r.: P. Pratt, L. Mitchell, M. Worrell, L. Beattie, W. Cox, K. Stull. Second row, l. to r.: D. Pierce, D. Pruett, K. Poer, B. Seneff, P. Mincer, K. Robertson. Third row, l. to r.: D. Carlson, S. Wheeler, D. Goedde, K. Balcomb, A. Rippy. Fourth row, l. to r.: K. Beattie, H. Hollingsworth, L. Samuelson, P. Vidakovich, B. Embry.

G.A.A.



Front Row: Miss Milosevich, L. Ferrin, P. Stites, T. Bissing. Second row, 1. to r. H. Hollingsworth, M. Hill, L. Samuelson, A. Vanderhoof, J. Mestas, R. Fitzgerald, K. Pappas, C. Lewis, P. Dumont. Third row, 1. to r.: D. Gregg, C. Alsdorf, S. Glenn, D. Lake, D. Goedde, K. Collins, C. Anderson, K. Hartline, C. McVbeen, J. Porter, T. Wilson. Fourth row, 1. to r.: K. Dalton, B. Artaz, J. Hausckal, K. Poer, B. Seneff, T. Haff, J. Bedford, M. Lawrence, A. Jones, D. Martinez. Fifth row, 1. to r. D. Ketterman, D. Osborne, P. Vidokavich, J. Phillips, D. Roderick, J. Lewis, W. Cox, K. Hutchinson, S. Brown. Sixth row, 1. to r. S. Stewart, N. Sprick, P. Chandler, V. Tibbets, M. Renegar, D. Ferrin, L. Stull, M. Lopez.



L. to R. Carmen Mayfield, Marilyn Renegar, Cathy Arnold, Ann Jackson.



L. to R. Ann Jackson, Marilyn Renegar, Peggy Chandler, Carmen Mayfield, Cathy Arnold.



L. to R. Carmen Mayfield, Marilyn Renegar, Ann Jackson.



Peggy Chandler (l.) and Cathy Arnold (r.)

OFFICE HELP



L to R: E. Downey; M. Dalton; B. Allen; K. Coryell; A. Jackson; J. Fischer; M. Renegar; M. Woirell

LIBRARIANS



L to R Sitting: D. Delaney; Mrs. McFadden; S. Bird, K. McClure L to R Standing: S. Stewart; L. Snyder; D. Ferrin; J. Bianco; V. Waggner; V. Black

WOOL GROWERS



Sitting L. to R. L. Saathoff; S. Grywatch, D. Garrison; V. Wagner; J. Davenport; S. Hausel; S. Hausel. Standing Left to Right: T. Gardner; V. Black; K. McClure; D. Bair; C. Smith; M. Ochko; S. Miller; S. Botikin; D. Martinez.



Sitting; M. Dunsdon Standing Left to Right: P. Stites; M. Bershenyi; C. Stites; T. Zancanella; S. Geib; D. Dalpez, D. Lake; K. Lake.

Kathy Lake; Third Place
Vickie Black; Fifth Place

Junior Division:
Pam Stites; Seventh
Trudy Gardner; Fifth

District 1st Place
Winner: Cynthia Stites
Senior Division





Kneeling: K. Robertson 1st. Row: D. Robertson, C. Bryce, P. Allen, P. Pratt, K. Collins, C. Anderson, L. Samuelson. 2nd Row: D. Ketterman, S. Auther, J. Colglazier, J. Markem, W. Lemler, G. Smith, K. Beattie. 3rd. Row: T. Pohrte, G. Beffian, W. Hunter, H. Hollingsworth, B. Oldsen, C. Beattie, D. Franke. 4th Row: J. Neil, C. Chapman, J. Kosmatin, W. Wilcox, D. Pratt, D. Parkinson, L. Zimmer, D. Gallacher, M. Gallacher.



L. to R. D. Petre, Secretary; L. Beattie, Treas.; D. Gammil, Vice President; W. Lemler, Pres.; W. Cox, Librarian.

BAND



Kneeling: W. Cox, L. Beattie. 1ST ROW: C. Mayfield, P. Vidakovich, T. Wilson, C. Pappas, K. Hopkins, J. Davenport, S. Pratt. 2ND ROW: D. Healy, M. Smith, J. Woods, D. Godeski, S. Westlake, D. Gammill, 3RD ROW: A. Anderson, P. Pruett, K. Balcomb, J. Lewis, B. Seneff, B. McGuire. 4TH ROW: K. Carlson, M. Baker, L. Crutcher, J. Thompson, D. Mangnall, J. Stuben, S. Neimann, D. Petre.



Drum Majorette
Wendy Cox



Drum Majorettes: Wendy Cox, Karen Robertson, and Lorie Beattie, Kneeling



L. to R.: Bette Mueller, Pres, Adrian Rippy, V. Pres.,
Dixie Pierce, Treas; Maritza Bershenyi, Sec.



1966-67

1st row l to r.: L. Baker; S. Alsbury; N. Cheedle;
A. Rippy; L. Morris; S. Butler. 2nd row L. to R.:
D. Bair; P. Allen; C. Hostettler; B. Oldsen; A.
shenyi; M. Renegar; M. Gallacher; B. Phillips; G.
Beattie; M. Walters; W. Cox; V. Whitmer. 4th row
Webster; D. Pratt; C. Lewis; W. Wilcox; L. Snyder;



L. to R. W. Lemler, Treas; Danny Gallacher, Sec.;
Doug Pratt, Pres.; Chuck Lewis, V. Pres.



Lorie Beattie Accompanist



CHORUS

L. Mitchell; L. Morris; P. Pratt; C. Mayfield; S. Pratt; B. Mueller; C. Pappas; C. Arnold; M. Bershenyi; M. Worrell; N. Faust; D. Bair; D. Goedde; V. Tibbits; J. Rippy; K. Balcomb; Bryce; S. Lesh; D. Pierce; D. Delaney; 3rd row L. to R.: C. Lewis; T. Jackson; J. Ber-Smith; C. Henderson; C. Ligget; W. Lemler; K. Carlson; C. Saffeels; M. Wright; K. L. to R.: A. Anderson; S. Geib; D. Franke; B. Cox; D. Cook; D. Osborne; D. Petre; B. D. Gallacher; D. Webster; J. Lewis; K. Lake; M. Anderson; C. Stites.

MEN'S DOUBLE QUARTET



L. To Right. W. Lemler; J. Davenport; D. Gallacher; C. Lewis; L. Beattie; D. Cook; J. Davenport; B. Webster; Doug Pratt.

BELLAIRS



L. to R: C. HOSTETTLER, S. McLAUGHLIN, M. STOWE, S. ALSBURY, L. MORRIS, A. RIPPY, J. COOK, P. HILL, R. HARDING



L. to R: R. HARDING, S. ALSBURY, C. HOSTETTLER, S. McLAUGHLIN, M. STOWE, P. HILL, L. MORRIS, J. COOK

Orchestra Officers

L. to R: PATRICIA HILL, ADRIAN RIPPY, SANDRA McLAUGHLIN



ORCHESTRA



First row, l. to r.: S. Herring, C. Kennan, T. Motichka, S. Reed, D. Schenkelberg, C. Ellsworth, S. McLaughlin, R. Bradshaw, B. Hauptli, M. Stowe, R. Milstein, Cindy Markum, L. Morris, P. Hill, J. Cook, S. Alsbury, R. Harding, C. Hostettler. Second Row l. to r: T. Wilson, K. Pappas, H. Hollingsworth, D. Parkison, D. Pratt, L. Beattie, M. Baker, W. Cox, D. Gammill, A. Rippy, W. Lemler, C. Mayfield.



Mr. Bramble et. al.



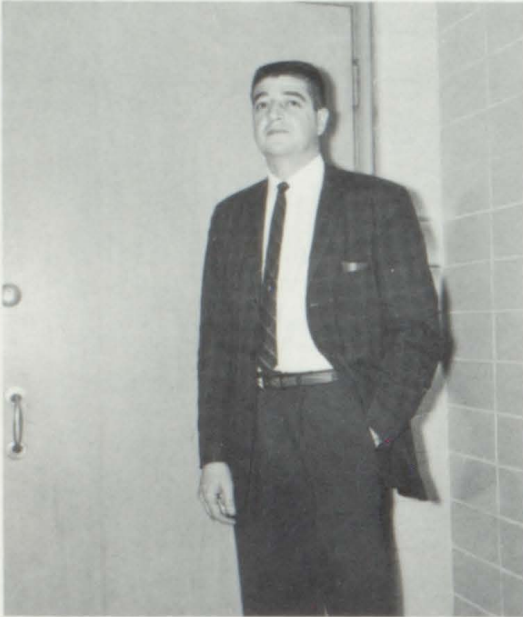
Mr. Bramble



MAESTRO WITWER



THE VICTORS?



COACH CHAVEZ



CHUG-A-LUG



FRESHMAN INITIATION



ROCK OUT, WILD THING



DID I TYPE THAT?



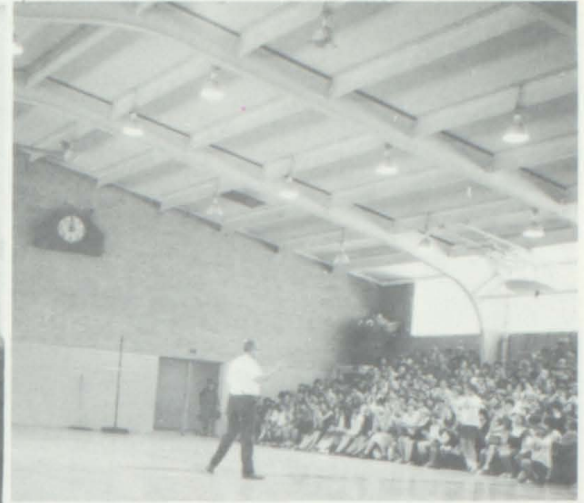
ON THE COUNT OF THREE, LAUGH.



I GOT MY MAN, HONEY!



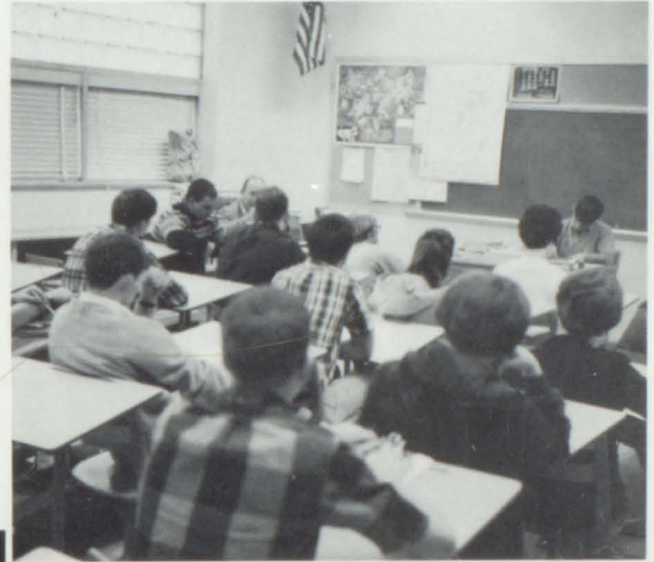
AS MOM ALWAYS SAYS. . .



A ONE AND A TWO AND UH?



CHRISTMAS CAROL DINNER



STUDENT COUNCIL



MORE PUNCH, RICH?



GSHS





THE WRESTLERS



OOH, THAT SMARTS



BOW DOWN, KNAVE



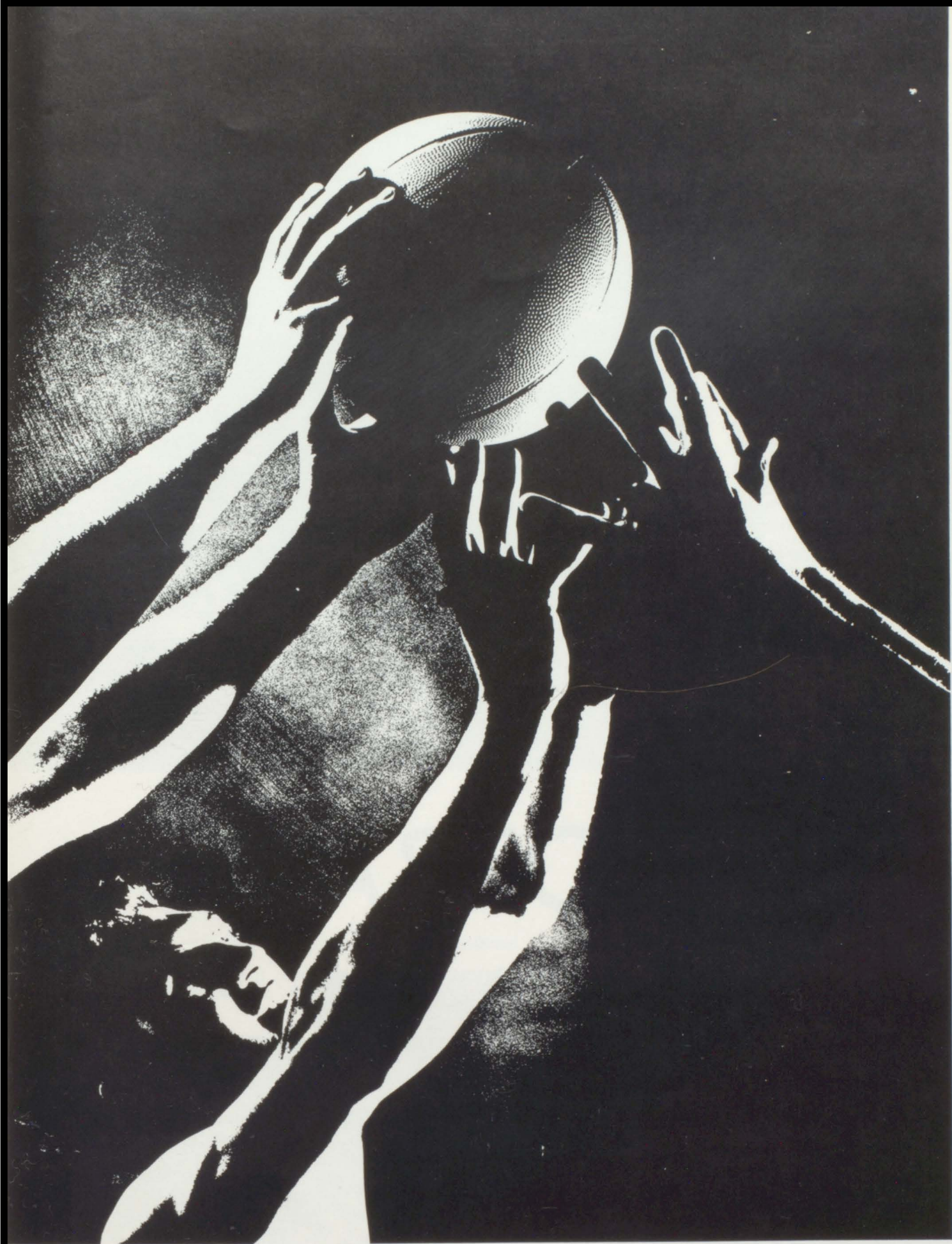
HOW'S THE WATER?



FACULTY CHEERLEADERS



NO, I'M JIM, HE'S JOHN!

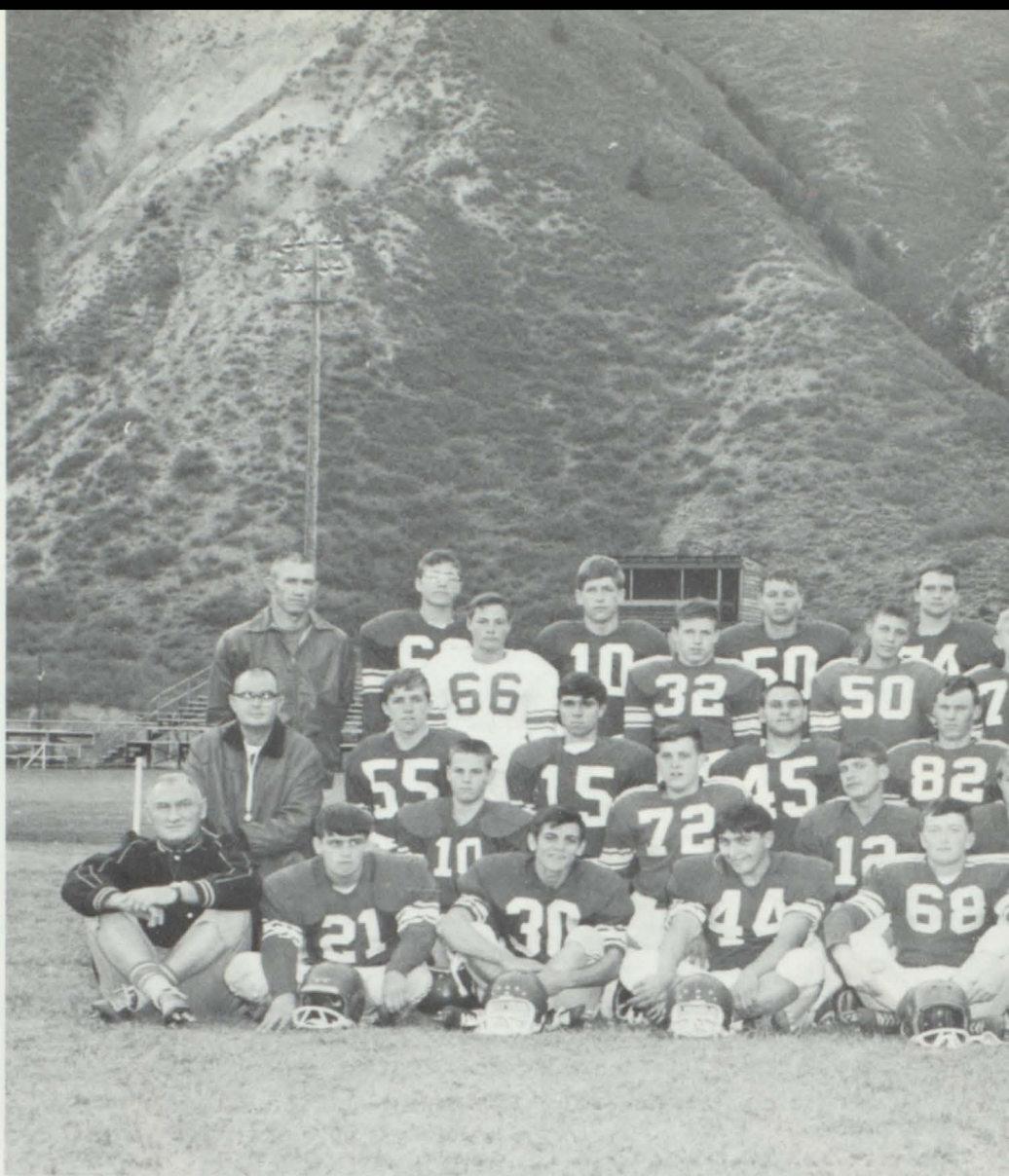


ATHLETICS

SCORES

Olathe	25-12
Delta	7-0
Montrose	6-19
Rifle	7-6
Craig	42-6
Meeker	10-7
Rangely	28-26
Leadville	12-6
Steamboat	33-13
Fruita	14-43

(front row) l to r) Coach Stubler, J. Roy, D. Artaz, D. Piffer, D. Williams, W. Lemler, S. Coller, D. Gammill, E. Hogue, J. Hitt, K. Philpott; (second row) M. Lyons, M. Jolly, R. Pappas, J. Lesh, N. Massaro, R. Heuschkel, J. Blue, T. Henderson, L. Adams, D. Wilcox; (third row) Coach Jones, R. Adams, D. Mestas, R. Stubler, T. Philpott, S. Laven, W. Wilcox, J. Budd, M. Trevehan, D. Petre; (fourth row) Coach Miller, B. Phillips, B. Orr, J. Rosa, G. Holub, D. Godeski, G. Smith, D. Roy, E. Downing, D. Strode, M. Morelli; (fifth row) C. Lewis, J. Neil, R. Pretti, D. Henderson, L. Kay, J. Swartzendruber, S. Niemann, P. Jarosz and W. Shelton



19

66

FOOTBALL

(front row) l to r) D. Henderson, J. Swartzendruber, L. Kay, E. Hogue, R. Pretti, J. Hitt, S. Niemann, D. Gammill, (second row) S. Coller, J. Neil, D. Piffer, D. Artaz, W. Lemler, R. Stubler, D. Mestas, J. Roy, P. Jarosz

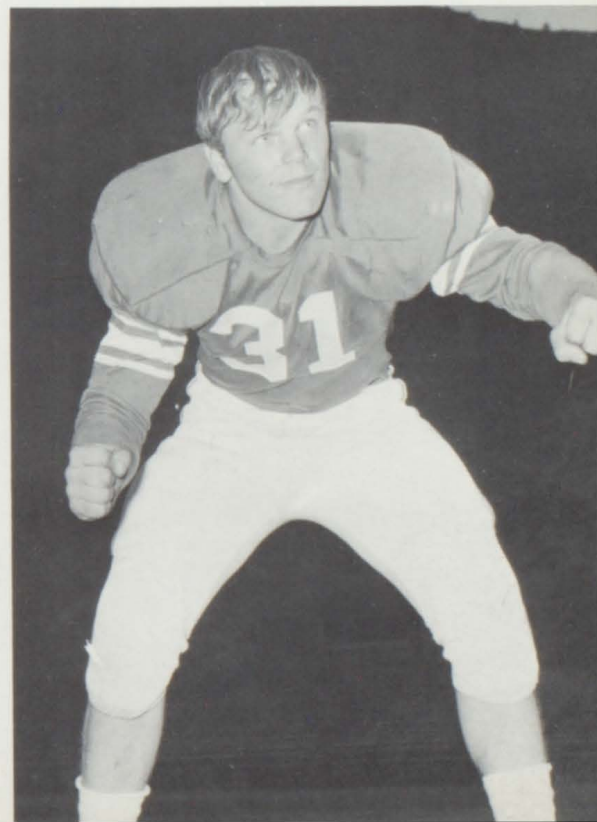
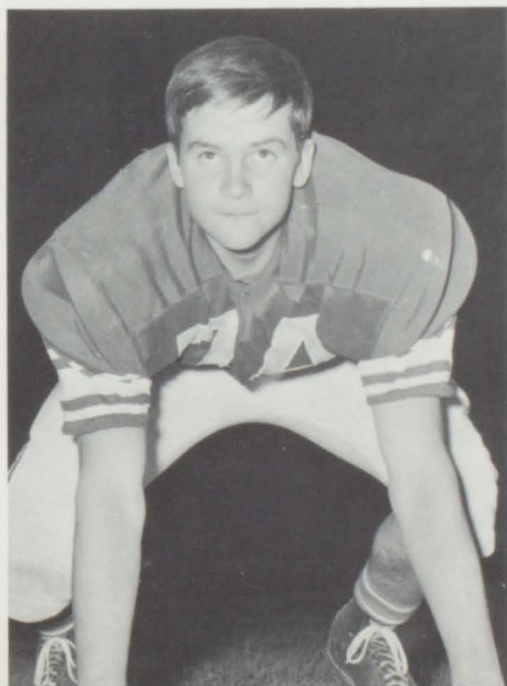
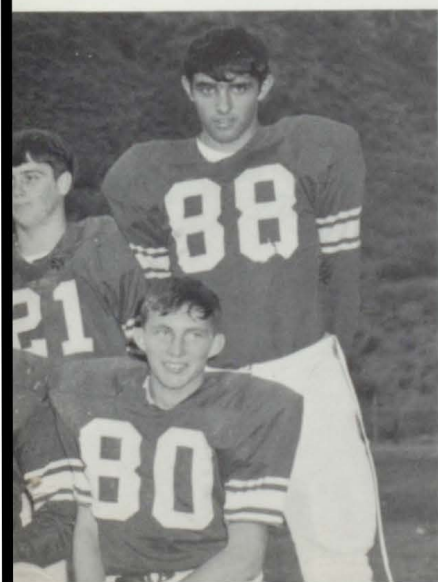




L. Kay

E. Hogue

D. Henderson

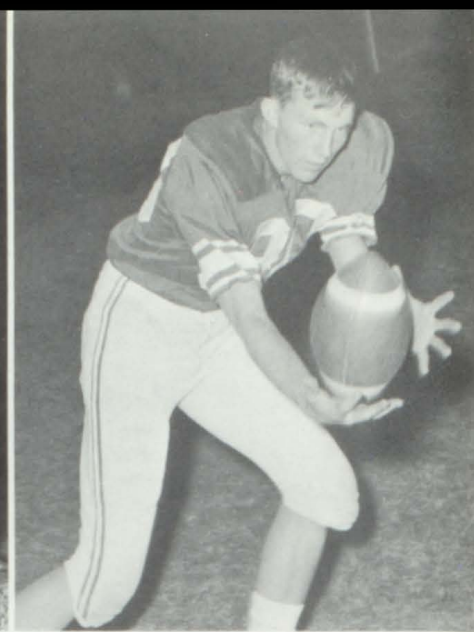




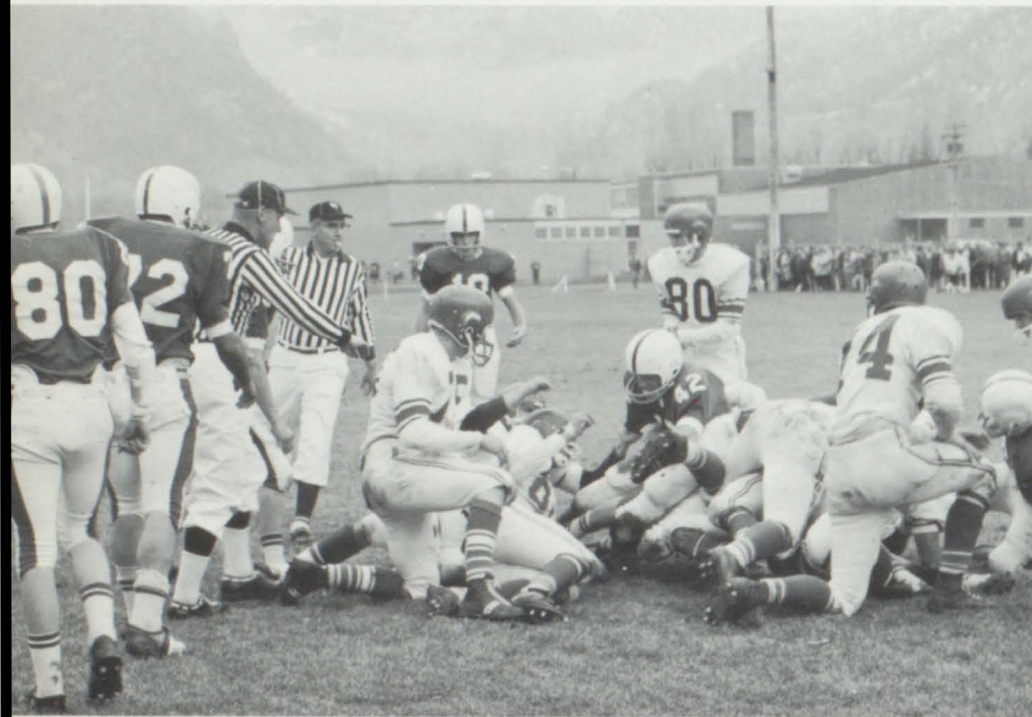
D. Mestas



R. Pretti



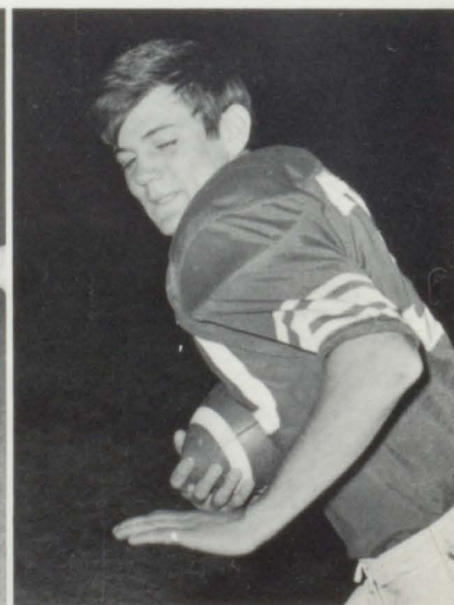
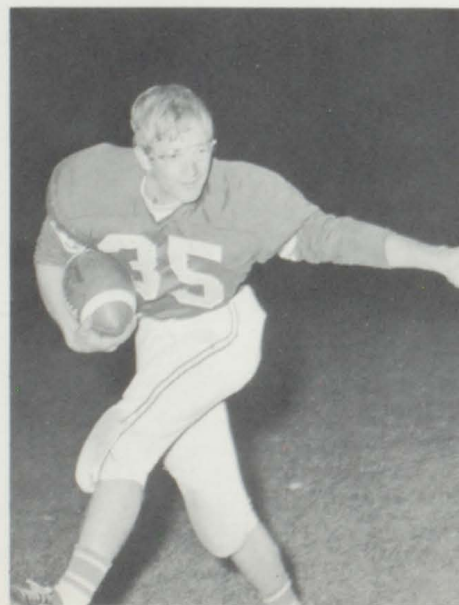
D. Gammill

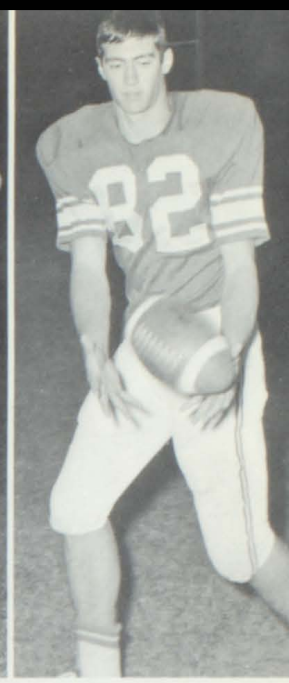
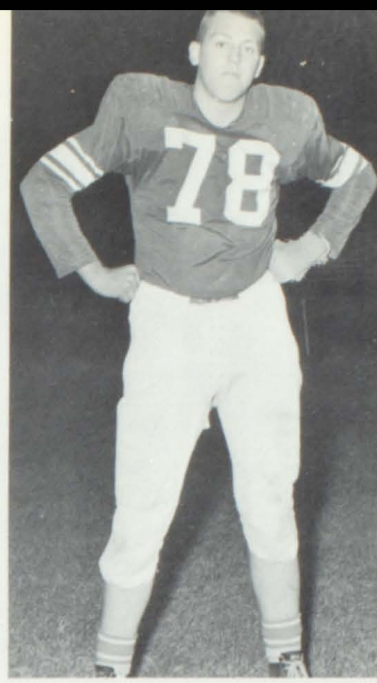


W. Lemler



J. Hitt
D. Artaz





S. Niemann

J. Swartzendruber



J. Roy

R. Stubler



P. Jarosz

S. Collier



1966-67 A SQUAD



Kneeling L. to R. J. Roy; D. Gammill; Mr. Chavez; B. Roy; R. Stubler. Standing, L. to R. D. Pratt; C. Lewis; B. Bates; C. Sheehy; P. Jarosz; J. Swartzendruber; B. Dunsdon.

1966-67 Basketball Scores

Roaring Fork	55	Glenwood	43
Olathe	57	Glenwood	68
Delta	43	Glenwood	44
Montrose	51	Glenwood	50
Rifle	48	Glenwood	47
Rangely	70	Glenwood	65
Delta	45	Glenwood	47
Craig	60	Glenwood	66
Meeker	53	Glenwood	57
Steamboat	49	Glenwood	63
Rifle	59	Glenwood	61
Rangely	63	Glenwood	46
Craig	58	Glenwood	71
Montrose	65	Glenwood	57
Meeker	53	Glenwood	54
Steamboat	36	Glenwood	77
Steamboat	57	Glenwood	83
Meeker	66	Glenwood	57
Rifle	73	Glenwood	54



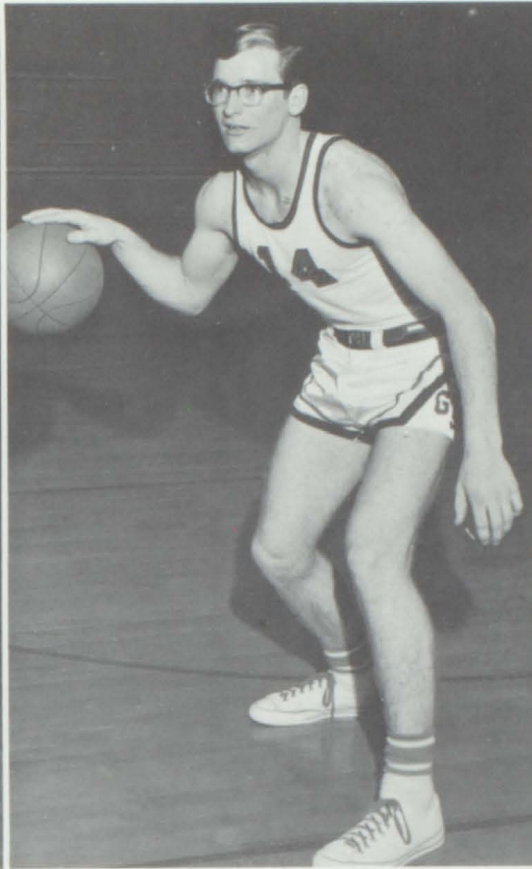
Richard Stubler



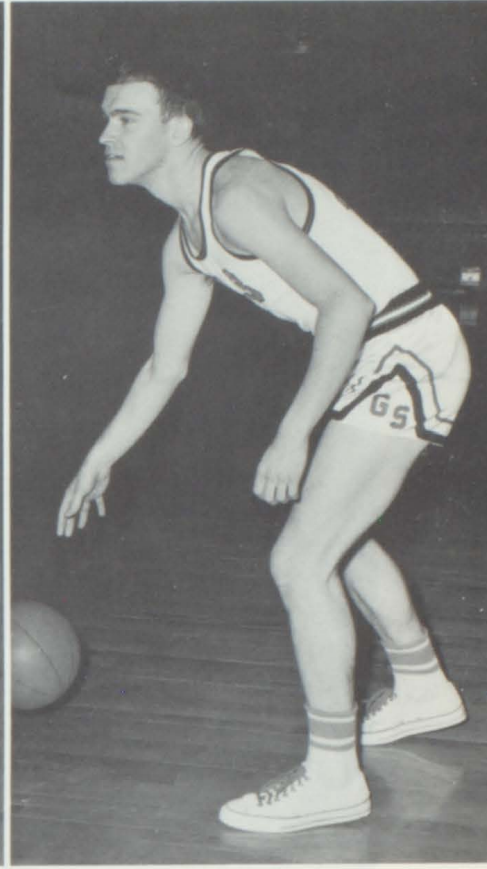
James Swartzendruber



Bob Roy

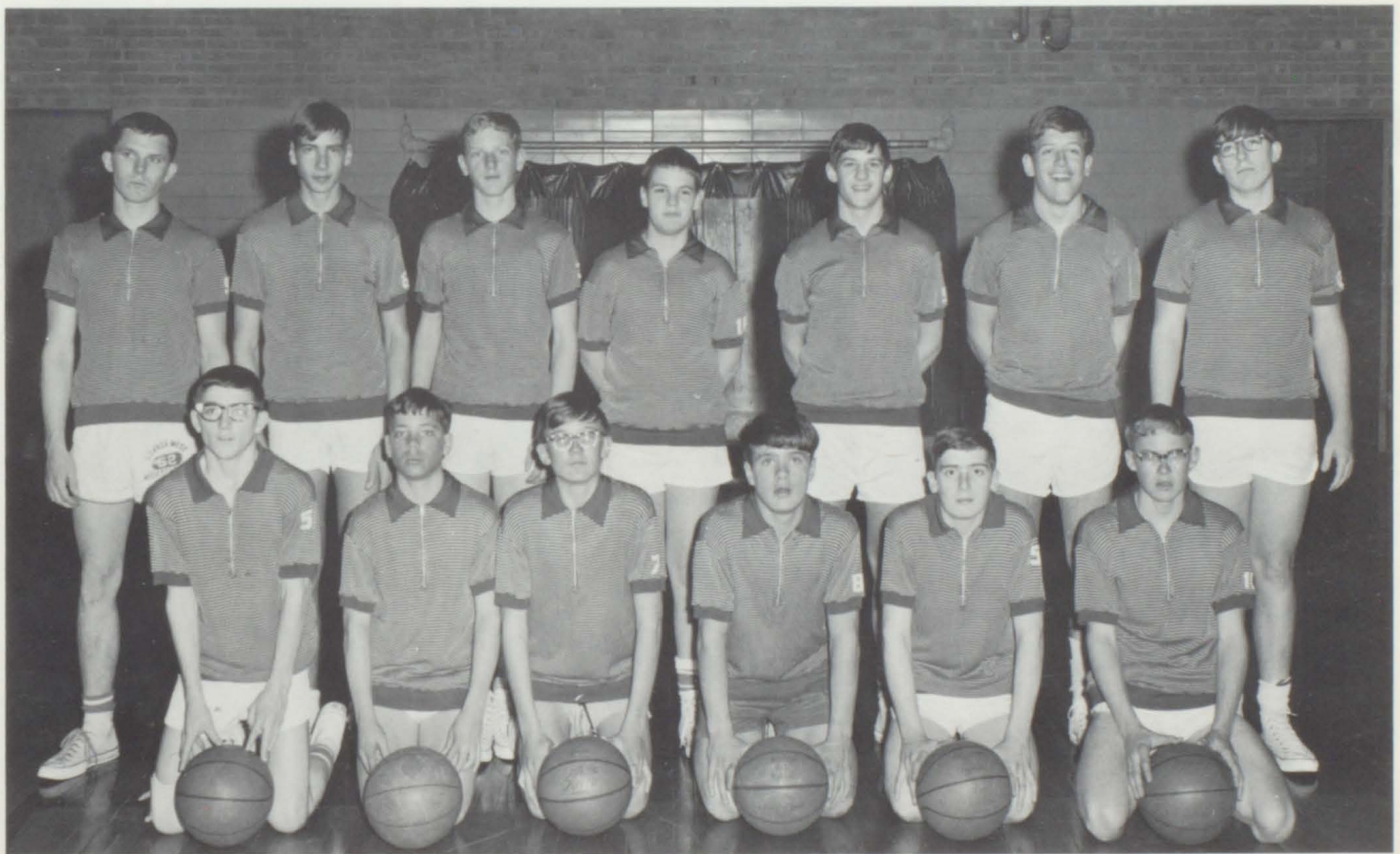


Barry Dunsdon



Doug Pratt

BASKETBALL 1966-1967



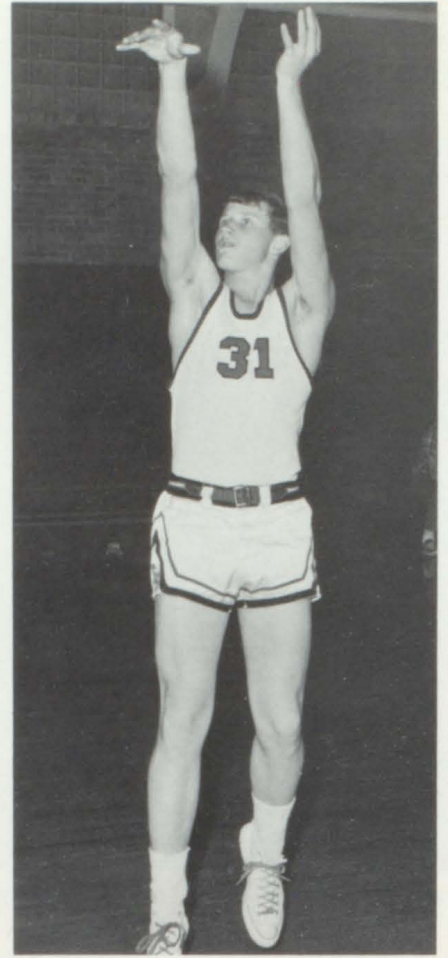
Kneeling L. to R. D. Strode; L. Crutcher; B. Bullock; R. Pappas; D. Roy; B. Saathoff. Standing L. to R. S. Laven; R. Gilbert; L. Adams; M. Lyons; S. Swartzendruber, J. Neil; B. Inscho.



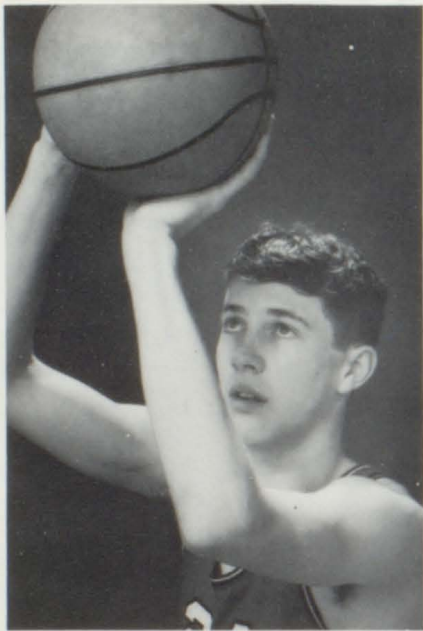
Chuck Sheehy



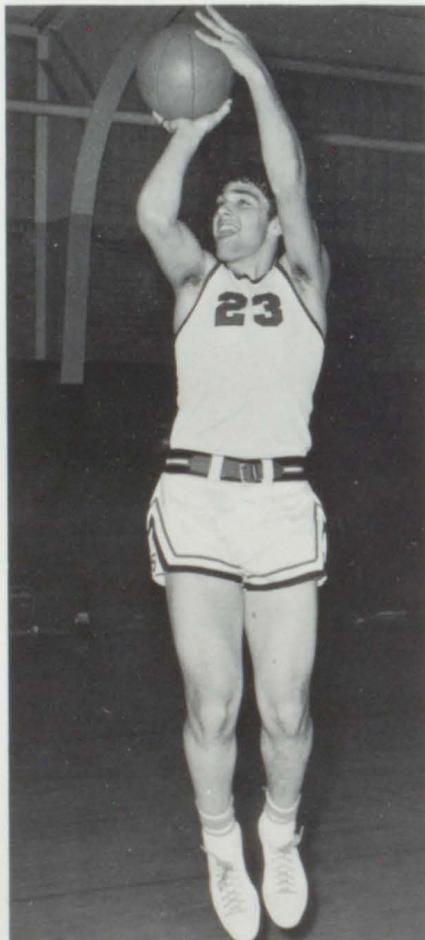
Jim Roy



Buster Bates



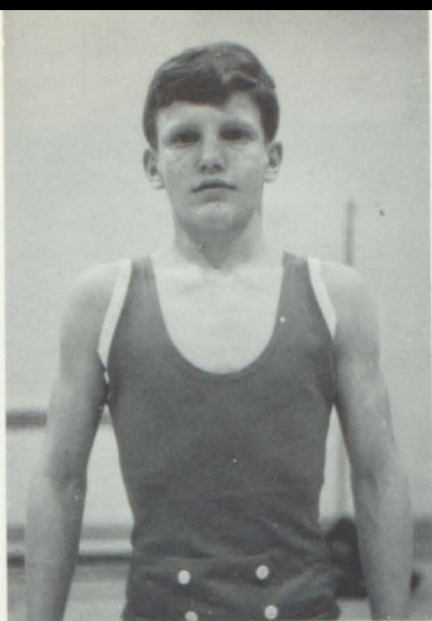
Bruce Vanderhoof



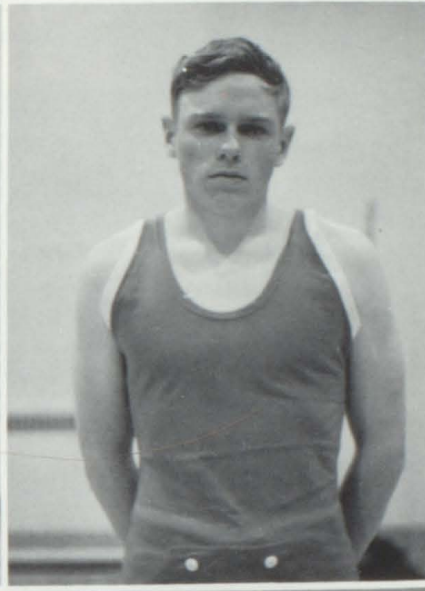
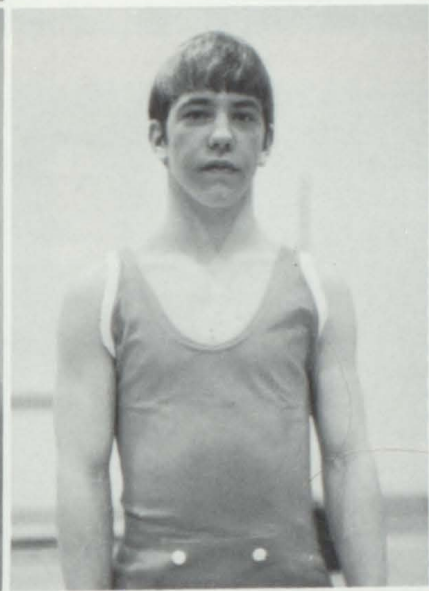
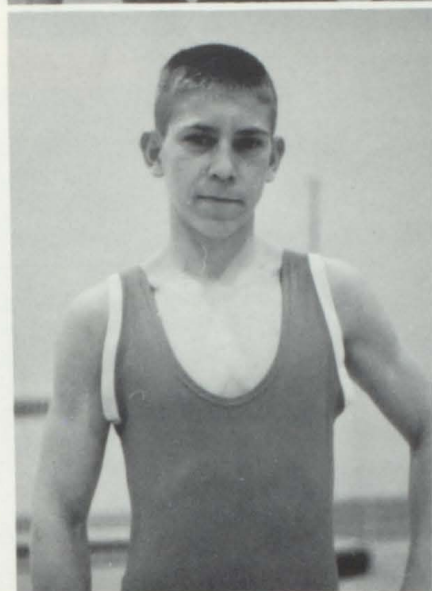
Pat Jarosz



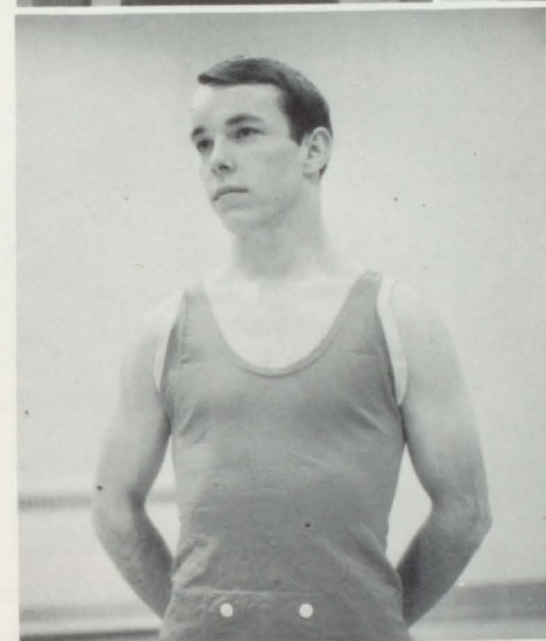
Chuck Lewis



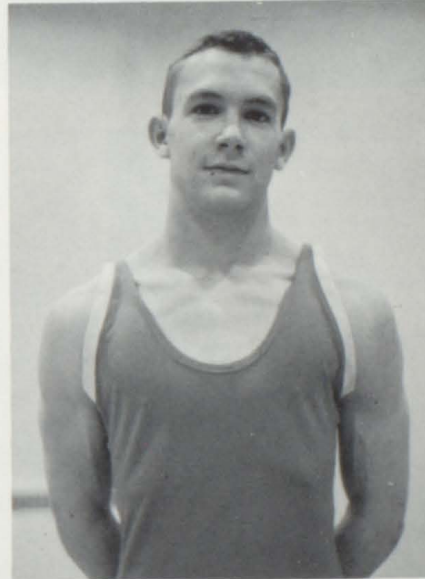
E. J.
Downing



Dan Godeski
Duane
Mortensen
Tom Verdieck



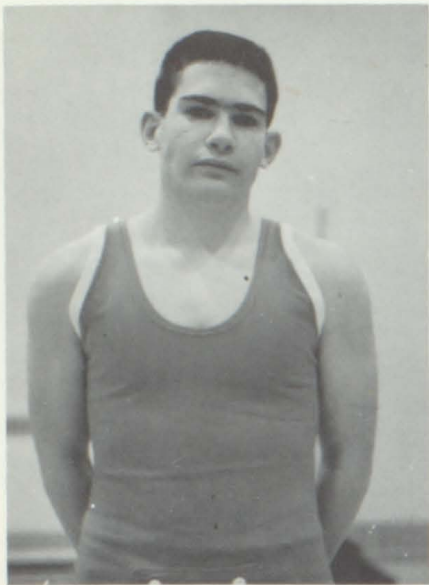
Dennis Edson
Captain



Don Parkison



Nick Massaro



Dan Petre

Dick Piffer

Wrestlers Not

Shown

- D. Artaz
- L. Kay
- J. Hitt
- T. Philpott



Wrestlers Not

Shown

- K. Philpott
- M. Bowles
- L. Whitmer
- C. Worline

Front row: (1 to r) J. Woods, M. Baker, M. Trevethan, M. Scarrow, R. Adams Back row: (1 to r) M. Morelli, G. Smith, L. Zimmer, J. Corsentino, L. Prehm, J. Rew



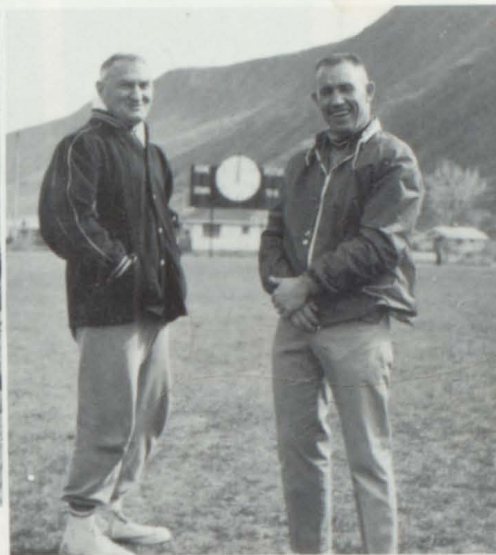
Don't Let Her Get Away!!!!!!!



You mean we have to run????



Would you believe. . .Tinkerbell???



The two victors.



Look Mom, I can Fly!!!



Mom said there would be days like this.



I forgot my wheaties!!!



I can finally do the splits.



Our New Cheerleader



ADVERTISING

GLENWOOD'S
Village Inn

Western Colorado's Largest
GLENWOOD SPRINGS, COLO.
303-945-6511

M
O
R
N
I
N
G

R
E
M
I
N
D
E
R

RED
GARTER
ROOM



AND
SAVE
AT

GLENWOOD STANDARD
SERVICE

2205 So. Grand

Phone - 945-6682

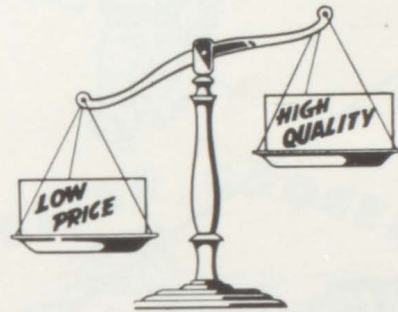
Good luck

in '67

CAYWOOD'S
**BARBER
SHOP**



BAY TERRACE RESTAURANT



SEE US FOR ALL

YOUR GLASS NEEDS!!!

**McMURTYGLASS
OF GLENWOOD**

Good Luck Seniors!!!!

Best of Luck

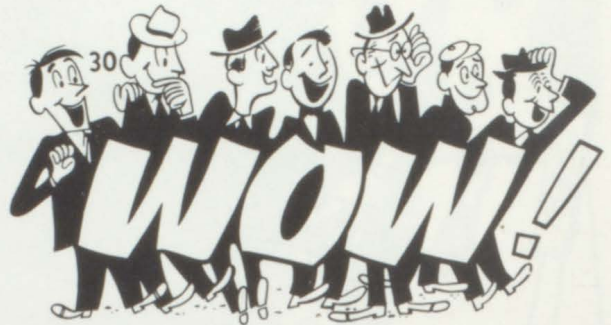
J. C. PENNEY'S

in '67

at a Fine Quality Store

Congratulations

SENIORS



Special values
in our non-food
section.



Best of luck

in '67 Seniors

PEOPLE ON THE GO

GO

SAFEGWAY!!



READ THE LATEST IN THE

GLENWOOD POST

**IF IT'S GOOD FOOD
YOU WANT...**

Visit



THE GLENWOOD CAFE



DRUGS



For the finest in
all your
Pharmacy
needs!!

CITY MARKET

WESTERN COLORADO SUPERMARKETS

Quality meats
Quality produce
National brands
Shop quickly, Save weekly

Congratulations Seniors



Wash the
modern
way at

NORGE VILLAGE

Featuring fully auto-
matic, coin-operated dry
cleaning and laundry equip-
ment. Open 7 days a week.

945-9049

BETTER GROCERIES



GAMBLES



The Glenwood MOTEL

"Convenient to Glenwood's Attractions"
ROOM PHONES—FREE TV

REUBEN and DOROTHY STROH
Owners - Managers

GOOD
LUCK
SENIORS



NEIL'S CONOCO

Phone- 945-5771

BUILDING MATERIALS



FOSTER LUMBER CO.

132 West 6th.
Phone-945-5464
Good Luck
in 67

Dine
at the
**HOTEL
DENVER**
402 7th.
Glenwood Springs



BUD'S M&M

AROUND THE
CLOCK
SERVICE!

"We Service
Everything We
Sell!!"



GOOD
LUCK
SENIORS

MOUNTAIN ELECTRIC AND REFRIGERATION

309 Ninth St.
Glenwood Springs

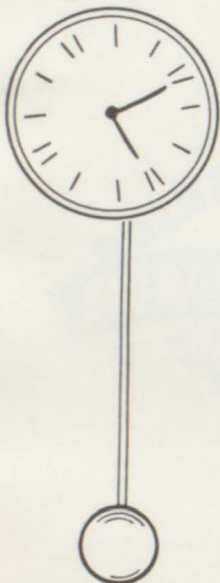
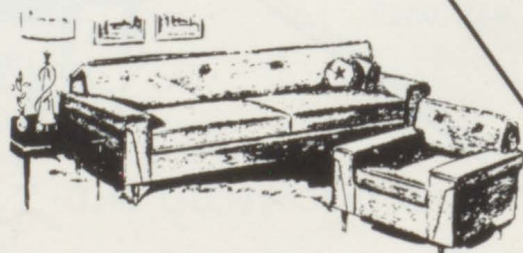
ARBANEY'S SADDLE SHOP

West Glenwood

CONGRATULATIONS
SENIORS

GALAXY FURNITURE
805 Grand Ave.

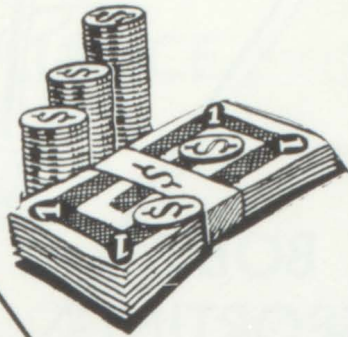
Best of
Luck-Seniors



GLENWOOD INDUSTRIAL BANK

FLOWERS
BY
DARRYL

"Flowers for every
occasion!"



"THE PLACE
TO SAVE!"

Good Luck
Seniors



WAKEFIELD'S TEXACO

"You can trust
your car to the
man who wears
the star!"



Alberta
BEAUTY SHOP

For the finest look in
hair beauty!

BEST OF
LUCK IN
1967

**Western
Auto
Associate
Store**

**APPLIANCE
CENTER**

815 Cooper

Phone -
945-6217

W-B
SURPLUS

SENIORS

VALLEY PAINT

"WE SERVICE WHAT WE SELL"

MAX'S

MUSIC COMPANY

THE FINEST IN BAND INSTRUMENTS

BALDWIN AND GULBRANSEN

PIANOS ORGANS

KLH STEREOS

SELECTION OF RECORDS

1338 Grand Ave.

945-6601

Glenwood Springs



Hairdo
Headquarters

**VICTOR'S
BEAUTY
SPOT**

C
O
N
G
R
A
T
U
L
A
T
I
O
N

BEST OF LUCK
IN 1967

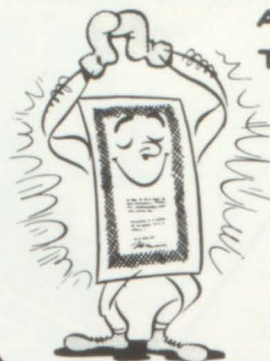


Scarrow and Walker

Reg. Land Surveyors
Phones 945-5574—945-5570
Box 336
Glenwood Springs, Colo. 81601

Robert D. Scarrow
Tom Walker

BEST POLICY
AT ALL
TIMES



**BOB'S
SPORTING
GOODS**

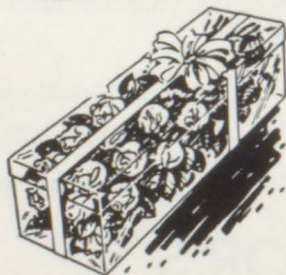
**CREDIT
BUREAU**

For the best in Sporting
Good equipment



**DEVER
JEWELRY**

731 Grand
Ave.



GLENWOOD FLORAL & GREENHOUSE

Glenwood Springs, Colorado

PHONE 945-6577

HOLIDAY INN MOTEL

U. S. HWYS. 6 & 24
WEST GLENWOOD SPRINGS, COLO.

ERNIE & MARGARET GANN
OWNERS
PHONE 945-5682

HEATED POOL
TUB & SHOWER COMB.
RESTAURANTS NEARBY



Make your friends
happy with a gift from

MARTHA'S COTTAGE

"WE WELCOME YOU"

Carl and Peggy Anderson

CONGRATULATIONS CLASS OF "67"

MONTGOMERY WARD

"Everything for the home"

MIKE'S APPLIANCE

"YOU CAN BE SURE IF IT'S WESTINGHOUSE"

GOOD LUCK SENIORS

Cedar Lodge
Glenwood Springs, Colorado
Mr. and Mrs: Scott Werking

"WE'D LOVE TO HAVE YOU"

New Modern Rustic Cabins



KNOTTY PINE LODGE

For Comfort

ELMER GLASS CO., INC.

313 20th. St.
Phone- 945-5037

"See the nicest guy in town for all your glass needs"

GOOD LUCK

SENIORS!!!

Elmer Schenkelberg

Best of Luck



VALLEY BODY SHOP

CHUCK PIFFER
BODY AND FENDER WORK AND PAINTING

GLENWOOD SPRINGS, COLORADO

24TH ST. & HI-WAY 82



Hested's

IF IT'S QUALITY YOU'RE LOOKING FOR

The wise place to shop

Visit

HESTED'S LUNCHEONETTE

The place to meet your friends



GOOD LUCK SENIORS



GLASS

COMPANY

Curved windshield in stock

AUTO GLASS

Immediate attention given

Desk Tops - Mirrors - window glass -
plate glass - steel sash

Phone 945-6464

Emergency call 945-5037

701 Cooper Avenue
Glenwood Springs, Colo

Congratulations

Seniors

Grade "A" Dairy
Products At Your
Door Or At Your
Store.

Homogenized

Pasteurized Milk

Buttermilk

Chocolate Milk

Butter - Ice Cream

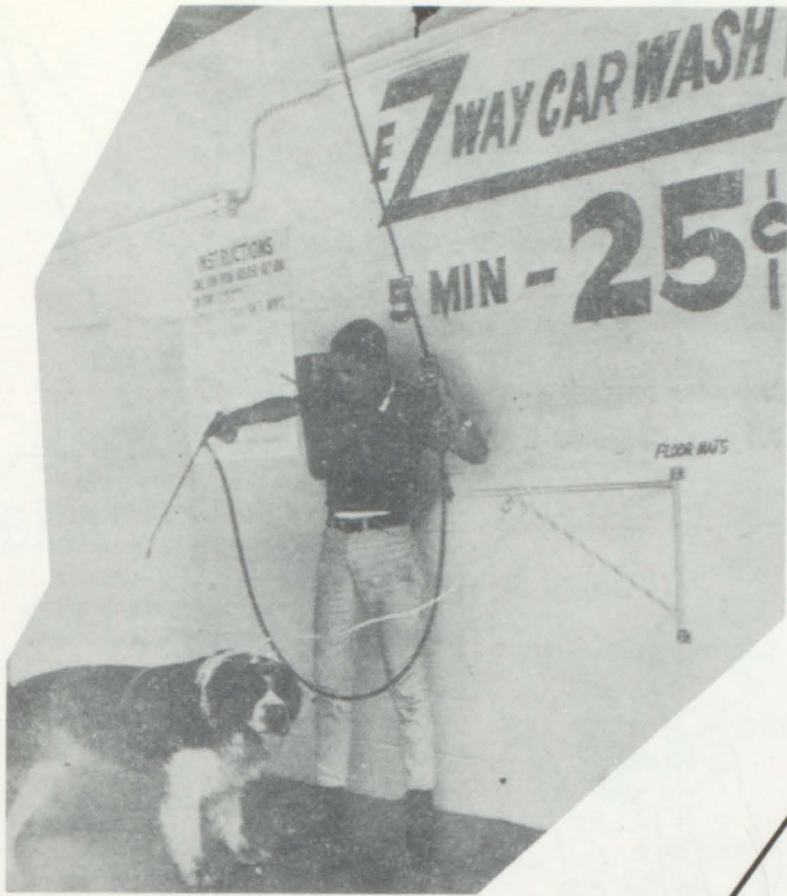
Phone 945-5674

718 Cooper Ave.

GLENWOOD SPRINGS CREAMERY



Nutritious
DAIRY PRODUCTS



Try it today!

5 min. - 25¢



Just

Good

Food

at the

FIRE

SIDE

INN

the easiest, most economical

and most enjoyable way to

wash your car. . .

and other things

2418 So. Glen Ave

Glenwood Springs



**RED
STEER**

GLENWOOD SPRINGS,
COLORADO

- RESTAURANT
- COCKTAIL LOUNGE

Diners' Club
American Express
Hilton Carte Blanche
or Cash

1 1/2 MILES WEST ON U.S. 6 & 24
PHONE 945-6437

CONGRATULATIONS

SENIORS

OFFICE SUPPLIES



RAYMOND'S

"Home of the
FAMOUS
OLYMPIA
TYPEWRITERS

Good
Luck

Seniors

BOOSTERS

Charcoalburger
Rowe Stationery
Joe and Bob's
Buttercup
Bakery



ANDRES
PIZZERIA

Best
of Luck in
67



at

PRATT

PLUMBING AND HEATING

"GOOD PLUMBING
IS

IMPORTANT

Congratulations
SENIORS

Good
Luck

Seniors!

Home of
fine
jewelry!!!!

THE DINNER BELL

CAFE

Best of
Luck in the
Future!

CATOR'S
HIDEOUT

ROCKY MTN.

MOBILE HOMES. INC.

Modern, Completely Furnished, Individual
Housekeeping Cabins, Electric Refrigeration

Old Highway 82 on the Airport Road
2 Miles South of
Glenwood Springs, Colorado



GIFTS *for*

all occasions

SIOUX VILLA
CURIO SHOP

LARIETTE
BEAUTY
SALON

118 6th.
Phone- 945-6671

"FOR A SATISFYING HAIRDO!"

GOOD
LUCK
SENIORS

BEST WISHES TO YOU SENIORS
FROM JOHN AND AGNES WALKER

J & A
SPUDNUT
SHOP

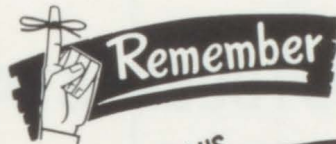
"yummy
donuts"

C
O
N
G
R
A
T
U
L
A
T
I
O
N

PHONE -
945-5509

DELSAS COTTAGES

SENIORS!!!!!!!!!!!!!!



WALT'S
AUTO
REPAIR

BEST OF
LUCK
SENIORS!!!

DR. DAY
DR. ZILM

GLENWOOD BOWL



If it's
glass you
need, see the
people at

GARFIELD
GLASS

Phone- 945-5081



BISSING'S
WAGON WHEEL
DAIRY KING

FOR GOOD FOOD WITHOUT
A DOUBT

"COME ON OVER AND BRING THE
WHOLE FAMILY"

BEST OF LUCK, SENIORS



A&W ROOTBEER STAND



SO. GRAND AVENUE

FILM NEEDS
DEVELOPED?

NEED THAT

GIFT FOR

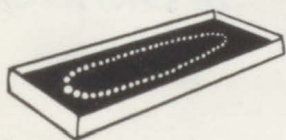
ALL OCCASIONS?

VISIT THE

ANSWER SHOP

816 Grand
Avenue

Glenwood Spgs .



DIAL
945-6237

BROCKWAY'S

Home Furnishings

P. O. BOX 549

945-6692

GLENWOOD SPRINGS COLORADO
81601

**DON'T WORRY
..GET HER GIFT**



**BULLOCKS
DEPARTMENT
STORE**

We've got

those famous

brand clothes that you want

In

GLENWOOD SPRINGS & ASPEN

MAKE

YOUR

HOME

COMPLETE

with
furniture

from

THRIFT'S

808 Grand Ave .



C
O
N
G
R
A
T
U
L
A
T
I
O
N
S

S
E
N
I
O
R
S



Prescriptions are filled promptly

CHASE PHARMACY

Caron, Revlon, Elizabeth Arden, Coty, Faberge, Antoine, Guerlain

WORLD FAMOUS BRANDS

GOOD
LUCK
SENIORS

Read all about it in the

SAGE

YOUR MODERN NEWSPAPER



INTERSTATE ENGINEERING CO.
COMPACT
HOME
CLEANING
SYSTEM

Shown by Appointment

BORDEN GRIDER

1109 Red Mt. Dr.

Dial 945-7297



CONGRATULATIONS

SENIORS

of 1967

VAN'S
SPORTING
GOODS

HEAD SKI
RENTAL



*latest
fashions*
at
JACQUES



