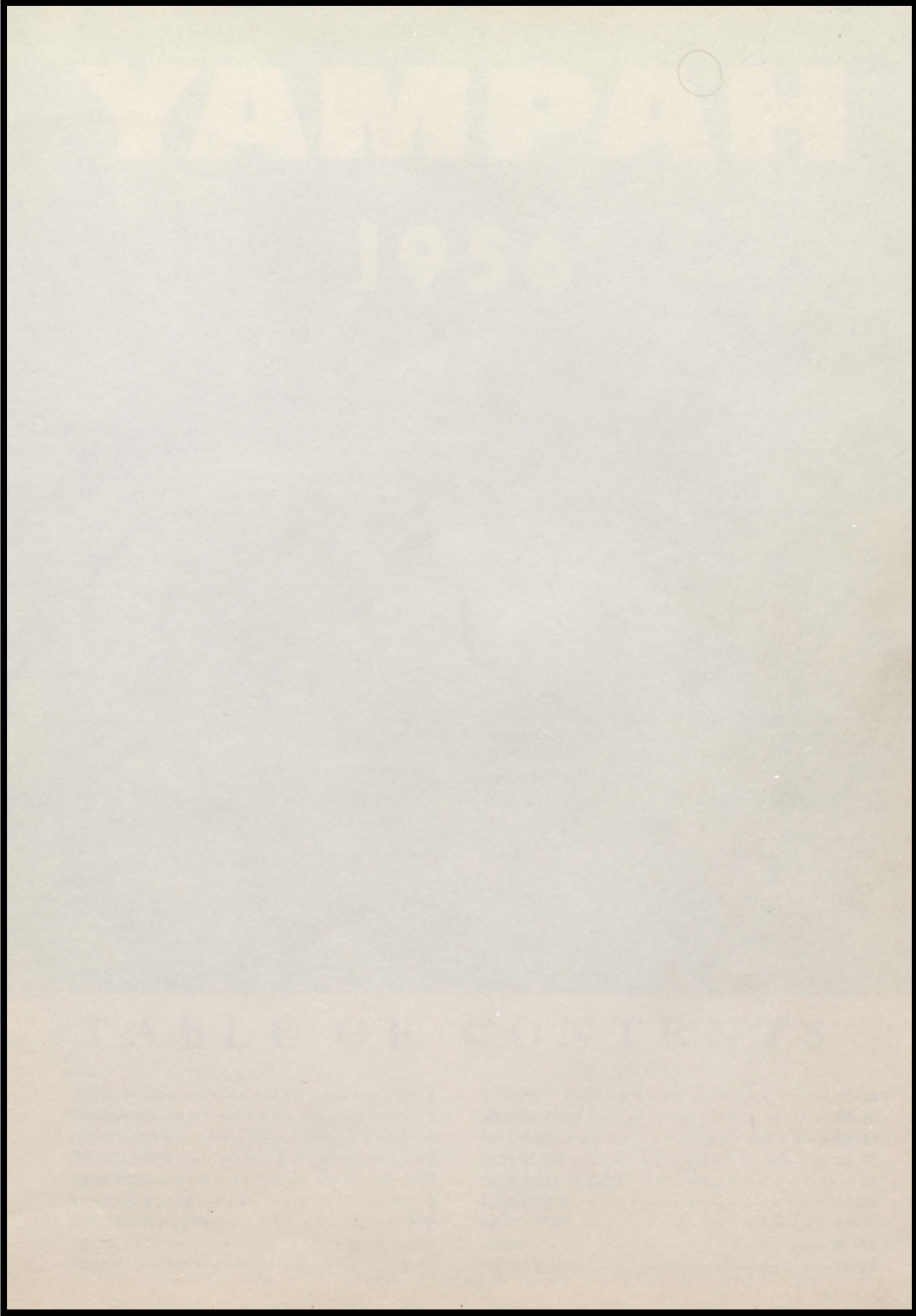
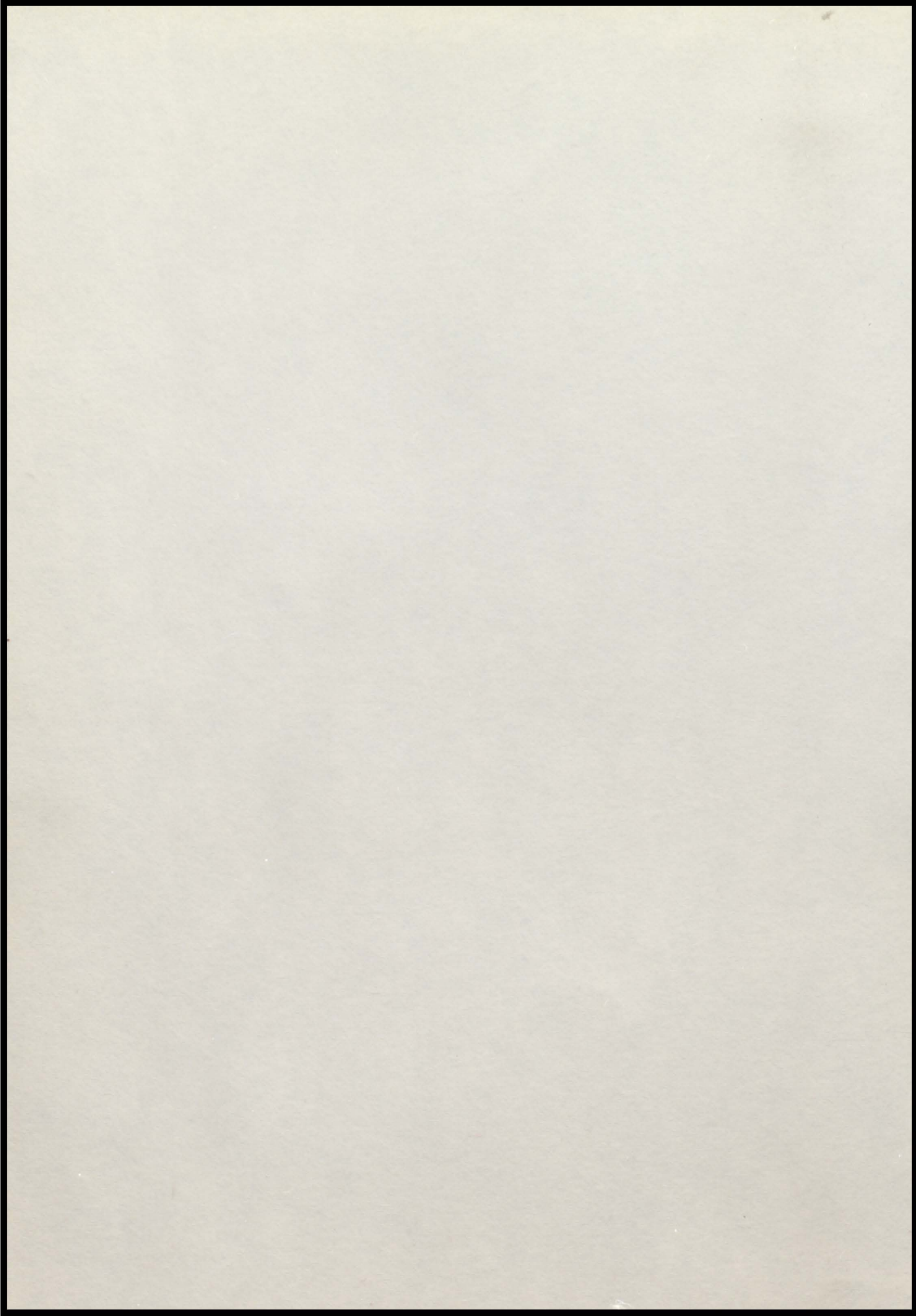




YAMPAN







# YAMPAH

## 1956

### FOREWORD

THE YAMPAH STAFF proudly presents your 1955-56 annual.

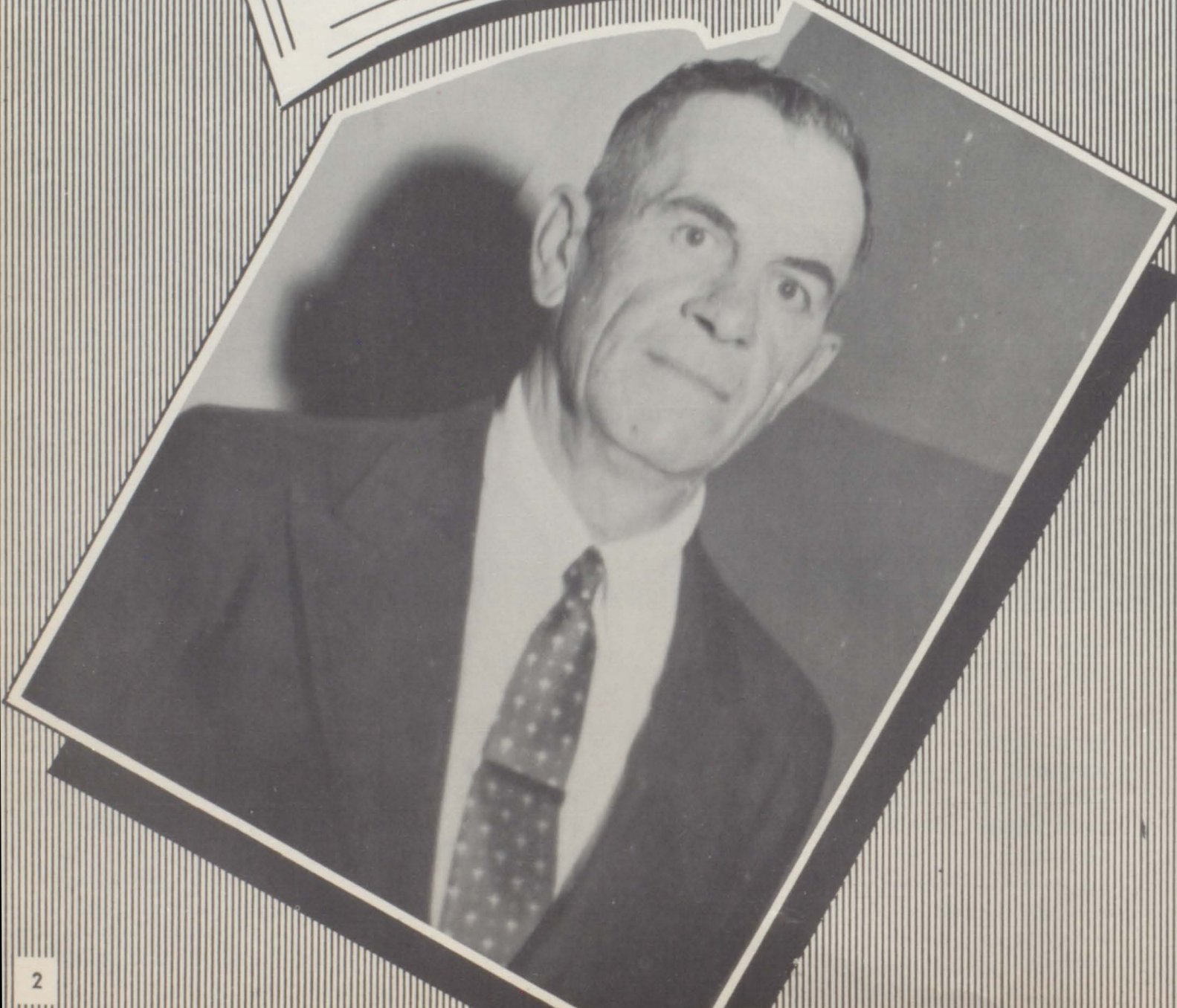
We hope that events recorded here will bring hours of enjoyment and pleasant memories throughout the years.

## TABLE OF CONTENTS

|                          |       |                          |       |
|--------------------------|-------|--------------------------|-------|
| TITLE PAGE - - - - -     | 1     | JUNIORS - - - - -        | 21-24 |
| FOREWORD - - - - -       | 1     | SOPHOMORES - - - - -     | 25-28 |
| CONTENTS - - - - -       | 1     | FRESHMEN - - - - -       | 29-32 |
| DEDICATION - - - - -     | 2     | FAVORITES - - - - -      | 33-37 |
| MEMORIAL - - - - -       | 3     | MEMORIAL FIELD - - - - - | 38    |
| YAMPAH STAFF - - - - -   | 4     | ATHLETICS - - - - -      | 39-46 |
| ADMINISTRATION - - - - - | 5-6   | ACTIVITIES - - - - -     | 47-56 |
| FACULTY - - - - -        | 7-9   | SNAPS - - - - -          | 57-61 |
| SENIORS - - - - -        | 10-20 | ADVERTISERS - - - - -    | 62-77 |

We, the students of GCHS, dedicate this, our 1955-1956 Yampah to ARCHIE AMICHAUX a former GCHS graduate and athlete whose performances were outstanding in spite of a handicap.

Archie's spirit and loyalty are a goal for all to achieve. His maintenance room, affectionately called "Archie's Hideaway," is becoming more than the building's material needs. Here Archie houses student secrets, lends spiritual guidance, and shares their joys and sorrows. In this way we show our appreciation.

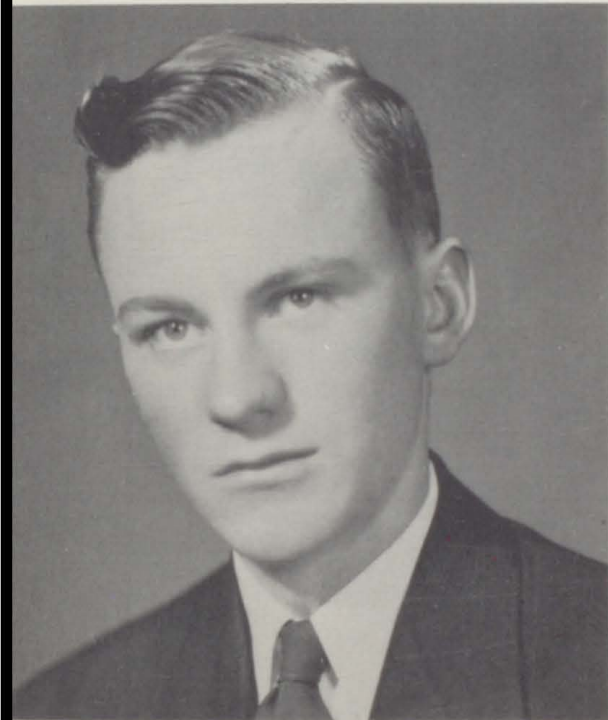


IN

MEMORIAM



REGINA BROWN  
Class of  
1953  
Died in September, 1955



ROBERT WICKHAM  
Class of  
1949  
Listed as killed in action.

FRANK OVERLIN  
Class of  
1950

# 1956 YAMPAH STAFF



Left to right: D. Dever, J. Richmond, J. Podbevsek, M. Van Gaalen, M. Hawk, J. Hargis, L. Peck, T. Van Gaalen, J. Boorom, L. McNulty, J. Cox, L. Cline, D. Collings, H. Wilson, E. Rupar, J. Blanco, J. Benzel, L. Volpe, J. Tonso, B. Clark, J. Benzel, P. Clapham, J. Reser, N. Leighton, J. Harrington, D. Barnes, B. Foote, C. Nielson, J. Stull. Not shown in picture, J. O'Brien.

Co-Editor

Assistant Editor

Co-Editor



PHYLLIS BRADSHAW



JANICE FARNUM



ANN WERKING

Photographer

Photographer



4 L. E. MEREDITH



Sponsor  
MAXINE VOLPE



MIKE OSIF





ADMINISTRATION

The high school course of studies offered is designed to give you a basic training in the skills and understandings that are essential in your preparation for your life's work and for the making of a good citizen.

An opportunity is offered to obtain a good basic training in written and spoken English and languages, the fields of mathematics, the social studies, and in the sciences.

Now is the time for you to discover your special interests and abilities in these various broad fields of learning and to develop them to the best of your ability. This, in addition to learning how to get along with your classmates, will prepare you to be successful in your chosen life's work.

It is my hope that you will take every advantage offered to you during your years in high school.

H. J. Igo  
Superintendent



I am proud of the students and teachers of G. C. H. S. Their outstanding achievements in the Academic Field, F. H. A., Pub Club, Annual Staff, Pep Club, Student Council, Key Club, Band, Glee Club, and Athletics speak for themselves.

Our Superintendent and members of the Board of Education have laid the frame-work for rich and profitable education. The sound policies and excellent facilities give us the opportunity to perform at the top level of our abilities.

The reputation of Garfield County High School extends far and wide across many state boundaries. The students in the past have worked hard to earn this reputation. It is up to the present and future students to see not only that this high standard is maintained but improved.

Lucian H. Allen  
Principal



#### SCHOOL BOARD



Mr. C. F. Kimminau, President; Mrs. J. Busby, Secretary; Mrs. Neal Ellsworth, Mrs. E. Arbaney, Mr. Price Chase, Treasurer.

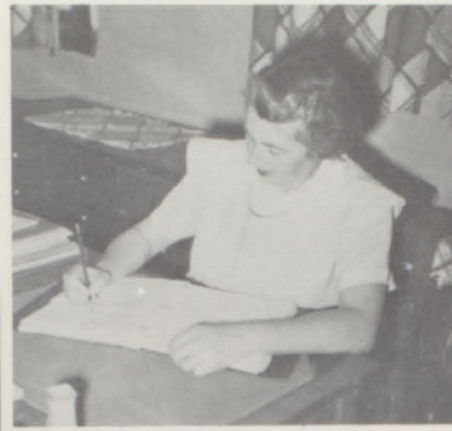


FACULTY

# GCHS



MRS. HAMMAR  
English



MRS. GRAVES  
Home Economics



MRS. STAPP  
English  
Languages



MRS. VOLPE  
Business  
Education



MRS. McFADDEN  
History, English,  
Social Studies



MR. BRAMBLE  
Instrumental Music



MISS GUADNOLA  
Vocal Music



MR. SHARP  
Science

# FACULTY



MR. ALLEN  
Math



MR. IGO  
Math



MR. DANIELS  
Math, Coach



MR. STUBLER  
Sociology  
Coach, Gym



MR. DAVIES  
History, Speech



MR. POST  
Shop, Coach  
Art, Mechanical  
Drawing



MRS. WILMOTH  
Principal's Secretary



MRS. TURNER, Superintendent's Secretary



MR. AMICHAUX, Janitor

# HIGHLIGHTS OF OUR SENIOR YEAR CLASS OF '56

SENIOR CLASS PLAY

December 9, 1955

Pictures on page 20

CHRISTMAS FORMAL

December 19, 1955



Queen and King Candidates:  
Nola Leighton, Queen, Peggy  
Hubbard, Anita Letey, Doug  
Martin, Fred Hurst, King, John  
Benzel.

Dance was held in the high school  
gym. Music was furnished by the  
High School Dance Band.

Rudolph was 6' tall,  
Santa Claus was 12' tall,  
The center tree was 30'  
tall.



Rudolph and Santa Claus were  
sold to the city for permanent  
Christmas decorations.

SNEAK DAY  
Denver

Friday, 11:55 p. m. to Monday, 11:19 p. m. May 27-30, 1956  
Ice Capades - Eddie Bohn's Pig and Whistle

JUNIOR - SENIOR BANQUET

JUNIOR-SENIOR PROM

Saturday, May 19, 1956

BACCALAUREATE  
Sunday, May 27, 1956

COMMENCEMENT  
Tuesday, May 29, 1956



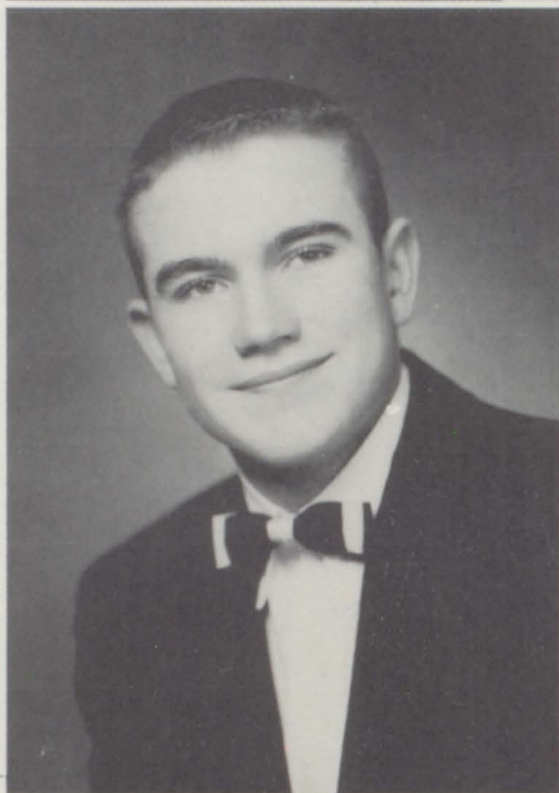
SENIORS

MRS. MAXINE VOLPE  
Sponsor



JOHN B. BENZEL  
Senior Class President  
Student Council Representative  
2, Class Vice President 3, Can-  
teen Committee 1, 2, "G"  
Club 3, 4, Football 1, 2, 3, 4,  
Basketball 2, 3, 4, Band 1, 2,  
3, 4, Glee Club 1, 3, Yampah  
Staff 3, 4, Junior League 1, 2,  
Band President 4.

JAMES NIESLANIK  
Senior Class Vice President  
Class Treasurer 1, Class Presi-  
dent 2, Track 3, Football 2,  
3, 4, Basketball 3, 4, Class  
Assembly 1, 2, "G" Club 2, 3,  
4, Boys' State 3.



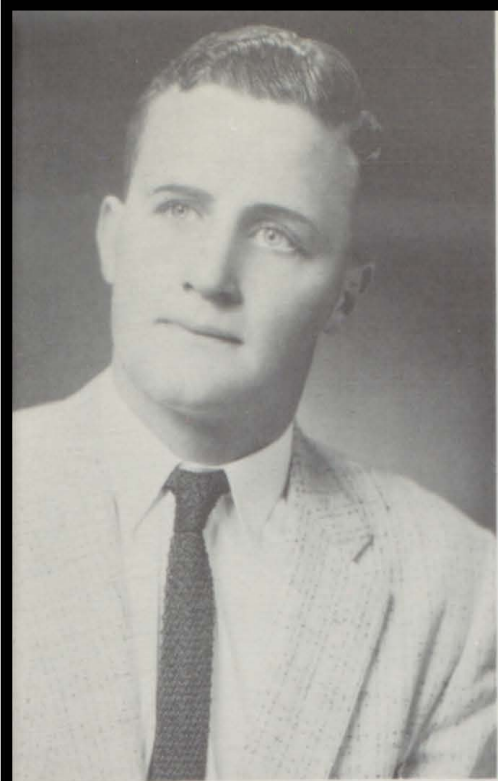
BEATRICE MOSCON  
Senior Class Secretary  
Student Council Representative  
1, Class Secretary 2, 3, Glee  
Club Vice President 4, Glee  
Club 1, 2, 3, 4, Modern Choir  
2, 3, Librarian 3, 4, Class As-  
sembly 1, Pep Club 1, 2, 4.

NOLA DEE LEIGHTON  
Senior Class Treasurer  
Humboldt, Iowa, 1, 2, 3.  
Pep Club 4, Homecoming  
Attendant 4, Snowball Queen  
4, Yampah Staff 4, Class Play  
4.



JAMES PATRICK POER  
Senior Class Historian  
Track 3, 4, Wrestling 1, 2, 3,  
4, Football 3, "G" Club 1,  
2, 3, 4, Class Assembly 1.





ROBERT MCFARLAND RICHMOND  
 Student Council President 4  
 Class Vice President 1; Key Club  
 President 4; Vice President Student  
 Council 3; Football 1, 2, 3, 4;  
 Basketball 1, 2; Track 1, 2, 3;  
 Class Assembly 1; Junior League  
 1, 2; "G" Club 1, 2, 3, 4; Class  
 Play Committee 3, 4; Football  
 Captain 4.

GLEN RICHARD BAILLIE  
 Glee Club 1; Class Assembly 1;  
 Junior League 1, 2; Class Play  
 Committee 3; Operetta 1; Pub  
 Club 4.



ANITA EMLIE LETEY  
 Student Council Representative  
 Class Treasurer 2; Glee Club 1,  
 2; Pep Club 1, 2, 3, 4; Class  
 Assembly 1; Modern Choir 2;  
 Librarian 3; Homecoming Queen  
 Attendant 3; Prom Queen 3; Snow-  
 ball Queen Attendant 4; Cheer-  
 leader 4; Class Play 4.

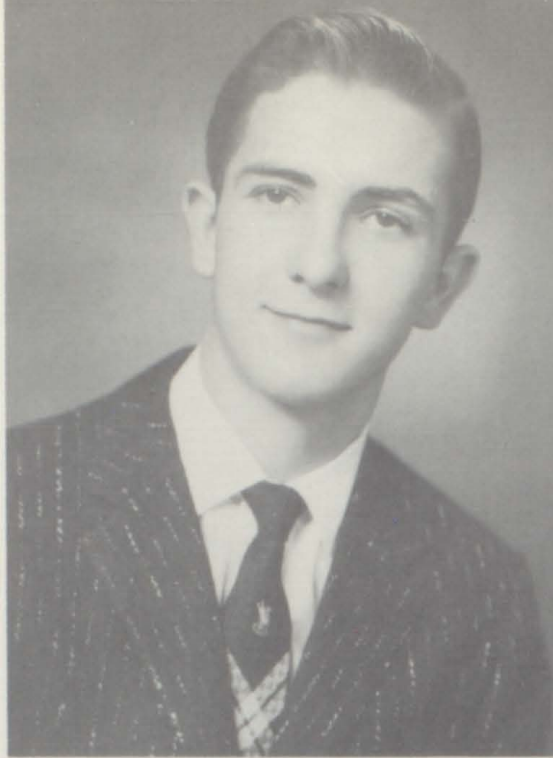
ROSE ANNA ALESSANDRI  
 Reliance, Wyoming 1, 2,  
 FHA Song Leader 4; FHA 3, 4;  
 Class Play Committee 3, 4.



STEVEN L. BAIR  
 Basalt, Colorado 1, 2,  
 Wrestling 3, 4; Class Play 3, 4;  
 "G" Club 4.

DONNA JEAN BARNES  
 Pep Club Treasurer 4; Glee Club  
 Secretary 4; Band 1, 2, 3, 4; Glee  
 Club 1, 2, 3, 4; Pep Club 1, 2, 3, 4;  
 Twirler 1, 2, 3, 4; Modern Choir  
 2, 3; Play Committee 3, 4; Yampah  
 Staff 4; Librarian 4; Girls Ensemble  
 4; Operetta 1; Interclass Basket-  
 ball 1; Class Assembly 1.

JAMES RICHARD HARRINGTON  
Football 1, 2, 3; Wrestling 1, 2;  
"G" Club 1, 2; Junior League 1;  
Yampah Staff 4.



JANICE BETH FARNUM  
FHA 1; Glee Club 1, 2, 4; Band 1,  
2, 3, 4; Homecoming Attendant  
1; Twirler 2, 3, 4; Class Play 3;  
Class Play Committee 4; Yampah  
Staff 3, 4; Girls Ensemble 4; Oper-  
etta 1; Interclass Basketball 1;  
Class Assembly 1.



FRED L. HURST  
Football 1, 3, 4; Class Assembly  
1; Class Play 3, 4; Junior League  
1, 2; "G" Club 4; Snow King 4;  
Kid's Day Representative 3, 4;  
Archaeology Club 1; Jr. Prom  
Attendant 3.

LOUISE MARY McNULTY  
FHA Parliamentarian 3; FHA News  
Reporter 3; FHA Treasurer 4;  
Band 1, 2, 3, 4; Class Assembly 1;  
FHA 2, 3, 4; Glee Club 1, 2, 3, 4;  
Yampah Staff 4; Pep Band 3, 4;  
Class Play Committee 3, 4; Inter-  
class Basketball 1, 2.



GARY LEE LEIGHTON  
Humboldt, Iowa 1, 2, 3  
Track 4; Football 4; Class Play  
4; "G" Club 4; Key Club 4.

BARBARA JUNE SCHRODER  
Office 4; Glee Club 1; FHA 1, 2;  
Class Assembly 1; Class Play  
Committee 3, 4; Yampah Staff 3.



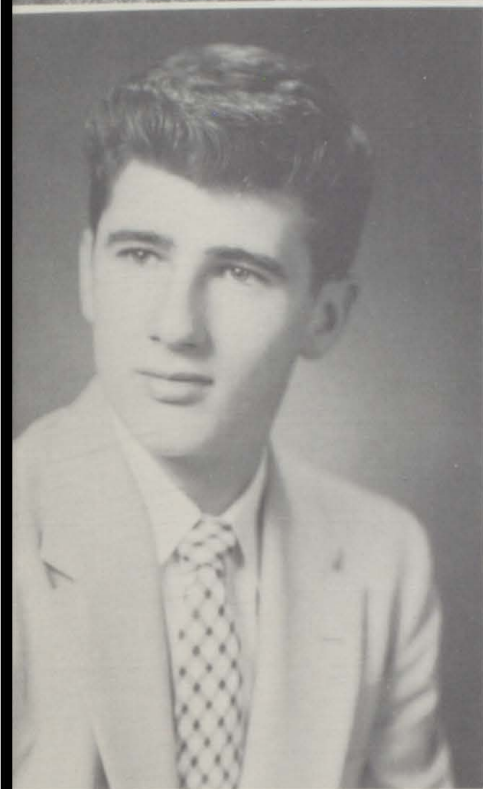
EDGAR LEE HUNT

Class Vice President 2; Football 3; Basketball 2, 3, 4; Class Assembly 1; "G" Club 3, 4.



PEGGY ANN HUBBARD

Band 1, 2, 3; Glee Club 1, 2, 3, 4; Pep Club 1, 2, 3, 4; Sextet 1, 2, 3, 4; Modern Choir 2, 3, 4; Snow Ball Queen Attendant 4; Operetta 1.



LEONARD J. KRIZMANICH

Crested Butte, Colorado 1, 2  
Football 3.



SHARON LYNN RICHMOND

Kid's Day Representative 2; Glee Club 1, 2, 3; Pep Club 1, 2, 3, 4; Class Play 3, 4; Operetta 1; Class Assembly 1.



JERRY CRAIG MANGNALL

Glee Club 1; Class Assembly 1; Basketball 1, 2, 3, 4; "G" Club 3, 4; Jr. League 1, 2.



PATRICIA ANN STEWART

Class Secretary 1; Class Assembly 1; Sextet 1, 2, 3; Cheerleader 2, 3, 4; Pep Club 1, 2, 3, 4; Modern Choir 2, 3; Class Play 3, 4; Operetta 1; Glee Club 1, 2, 3; Tournament Cheerleader 4.

LOREN E. CROUCH

Savannah, Missouri 1, 2

Class Play 3, 4; Kid's Day Representative 3, 4; Pub Club 4; "G" Club 3, 4; Football 3, 4.



ELIZABETH ELLEN BLANCO

Girl's Glee Club Treasurer 4; FHA President 3; Glee Club 1, 2, 3, 4; Class Assembly 1; Class Play 3, 4; Modern Choir 3; FHA 1, 2, 3, 4; Vice President FHA 2.

RICHARD JOHN GUNTER

Grand Junction, Colorado 1, 2

Class Play 4; Wrestling 4; Track 3, 4.

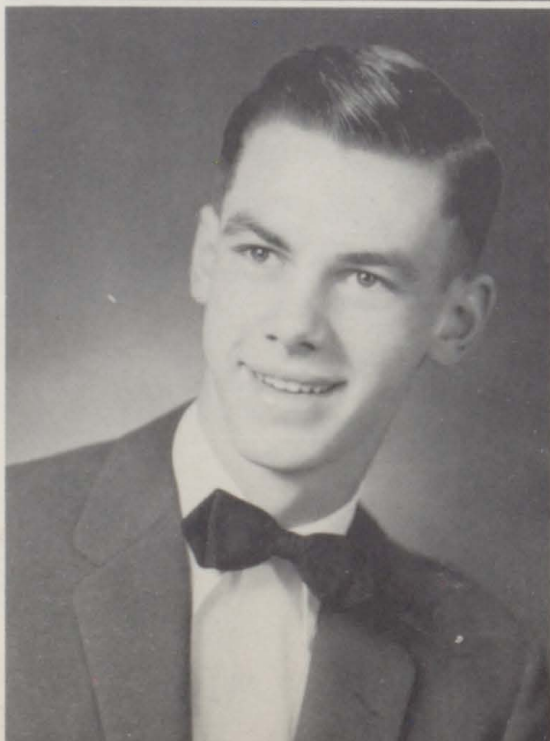


PHYLLIS HARRIET BRADSHAW

Student Council Representative 3; Pep Club Secretary 3, 4; Glee Club President 4; Yampah Co-Editor 4; Class Play 3, 4; Pep Club 1, 2, 3, 4; FHA 1; Glee Club 2, 3, 4; Pub Club 2, 4; Yampah 2, 3, 4; Class Assembly 1, 2; Inter-Class Basketball 1; Kid's Day Representative 4.

JERRY HAROLD HAMMAR

Archaeology Club President 1; Band 1, 2, 3, 4; Class Assembly 1; Operetta 1; Glee Club 1; Dance Band 3, 4; Class Play Committee 3; Junior League 1, 2.



JOANN MAE COX

FHA 1, 2; Glee Club 1, 2, 4; Class Assembly 1; Pep Club 2; Yampah Staff 3, 4.



RONALD THEADORE MARTIN  
Glee Club 1; Junior League 2;  
Basketball Assistant Manager 2;  
Track 4.

WILLIAM DAVID URQUHART  
Band 1, 2, 3, 4; Glee Club 1; Class  
Assembly 1; Class Play 3, 4; Oper-  
etta 1; Pub Club 4; Boys' State 3.



MORSE WELSEY WALKER  
Rangely, Colorado 1, 2, 3  
Wrestling 4.

CLARICE ANN WERKING  
Student Council Treasurer 1;  
Student Council Secretary 2; Inter-  
class Basketball 1; Operetta 1; Glee  
Club 1, 2, 3; Pep Club 1, 2, 3, 4;  
Class Assembly 1; Yampah Staff  
1, 2, 3, 4; Yampah Staff Co-Editor  
4; Class Play 4; Class Play Com-  
mittee 3; Girls' State 3; Kid's  
Day Representative 4; Archaeology  
Club Secretary 1.

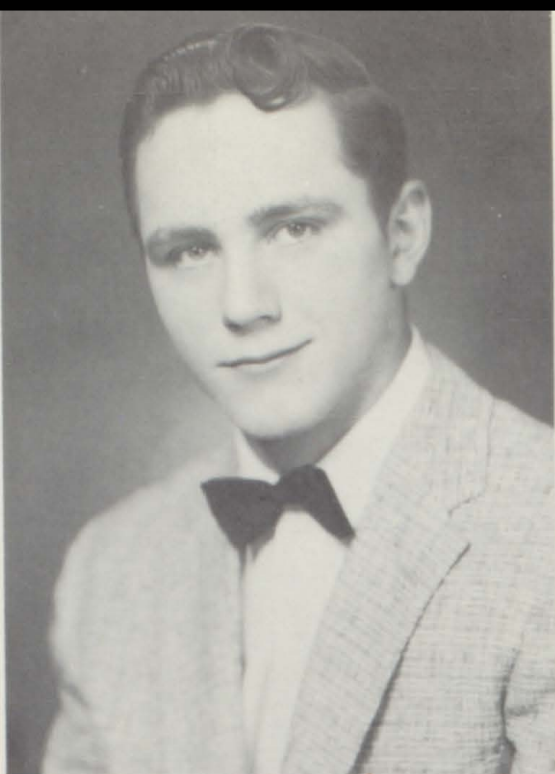


DEAN BAINBRICH  
Football 1, 2, 3; Track 1; Wrestling  
1, 2, 3, 4; "G" Club 2, 4.

CARMELITA BAINBRICH  
FHA Vice President 3; FHA News  
Reporter 2; Class Assembly 1;  
Class Play 3; FHA 1, 2, 3, 4; Glee  
Club 1, 2; Pep Club 1, 2, 3, 4;  
Homecoming Queen 4; Operetta  
1; Interclass Sports 1.

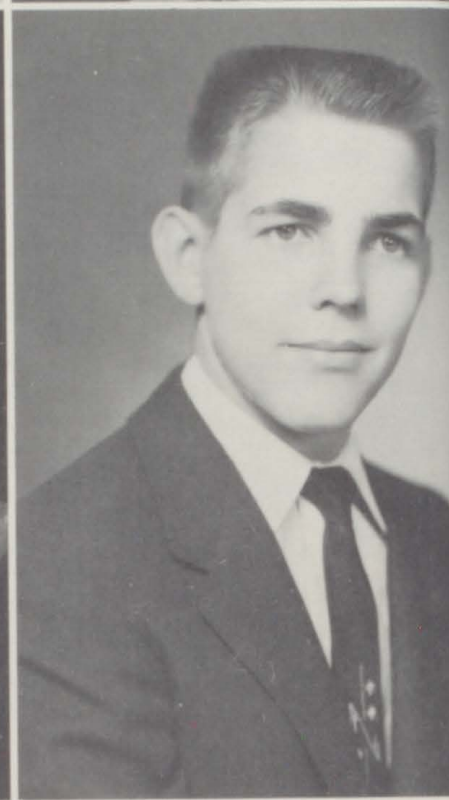
LAWRENCE E. BELLUCHIE  
Class Assembly 1; Junior League  
1, 2; "G" Club 2, 3, 4; Track 3, 4;  
Football 1, 2, 3, 4; Wrestling 1, 2,  
3, 4.

JOANNE MAE BOOROM  
Band Representative 2; FHA Dis-  
trict Historian 2; FHA District  
Parliamentarian 3; Band 1, 2, 3, 4;  
Glee Club 1, 4; Yampah 4; FHA  
Secretary 3; FHA Historian 2;  
FHA President 4.



SONYA LEE BARRINGER  
Pep Club 1, 2, 3, 4; Glee Club 1,  
2; Class Play Committee 4.

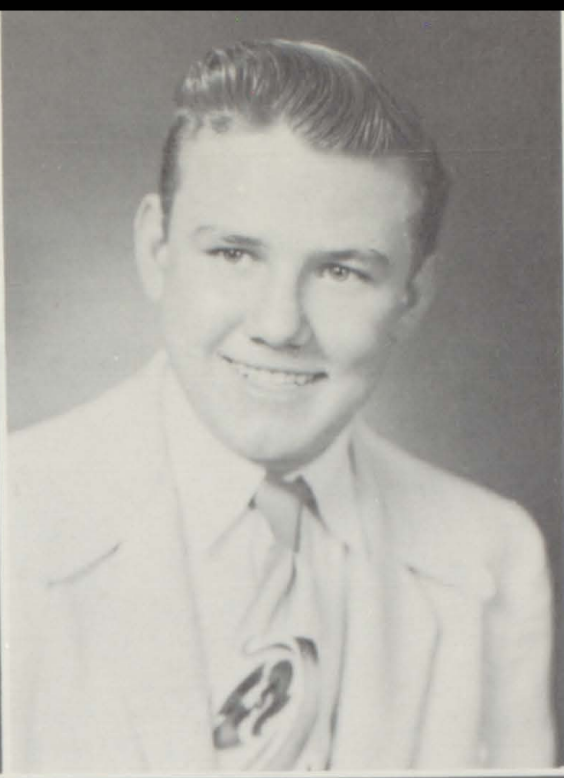
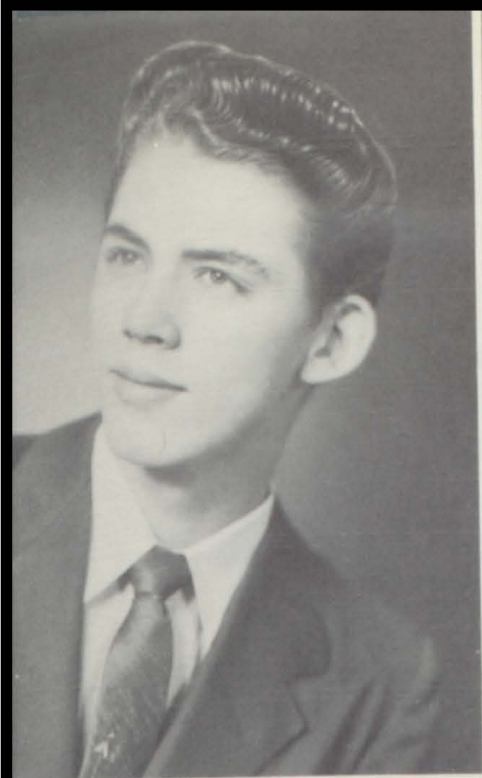
ROBERT LLOYD GUNTER  
Grand Junction, Colorado 1, 2  
Wrestling 3, 4; Track 4; "G"  
Club 4.



NASHALLA ANN BUTTRAM  
Glee Club 1; Band 1, 2; Pep Club  
2, 3, 4; Class Play Committee 3,  
4; Operetta 1; Interclass Basket-  
ball 1, 2.

JOHN R. DURRETT  
No Photo Available  
Denver, Colorado 1  
Class Treasurer 3; Football 3, 4;  
Basketball 2; "G" Club 4; Junior  
League 2.





RICHARD ERNEST MESSER

Junior League 1, 2, Track 3, 4,  
Class Play Committee 3.

WILLIAM DAVID WATTS

Evergreen, Colorado, 1, 2.  
Wrestling 3, "G" Club 3.



EDWINA ANN STULL

Band 1, 2, 3, 4, Class Assembly  
1, Operetta 1, FHA 2, Pub  
Club 2, 4, Canteen Committee  
2, 3, Play Committee 3, 4, Pep  
Club 4, Music Team 2, Glee  
Club 1, 2, 3.

DOUGLAS CRAIG MARTIN

Boys' Glee Club President 4,  
Football 2, 3, 4, Basketball 2,  
4, Band 1, 2, 3, 4, Class Assem-  
bly 1, Junior League 1, Glee  
Club 1, 2, 3, 4, Key Club Talent  
Contest 4, Operetta 1.

Baccalaureate  
Sunday, May 27  
8 o'clock

Processional

Invocation The Reverend James F. Warnock  
Saxophone Ensemble—"Der Freischutz" VonWeber  
Gary Hurst, Jay Filson, Glenda Martin  
Frances Diemoz, Bob Rupar, Jerry Hammar  
Address Dr. William Hartman  
Director, Department of Public Relations  
Colorado State College of Education, Greeley, Colo.  
Clarinet Ensemble—"Snowbirds" Johnson  
Gary Hurst, Joanne Boorum, Jerry Hammar  
Elaine Rupar, Bonnie Raymond, Glenna Flynn,  
Marilyn Scott, Norma Vidakovich  
Presentation of the Graduating Class  
Mr. Lucian H. Allen, Principal of the High School  
Presentation of the Diplomas  
Mrs. Dorcas Ellsworth, Board of Education  
Presentation of the Scholarships  
Mr. H. J. Igo, Superintendent of Schools  
Benediction The Reverend James F. Warnock  
Recessional

Commencement  
Tuesday, May 29  
8 o'clock

Processional

Invocation The Reverend Samuel L. Maxwell  
Selections Mixed Chorus  
Scripture Reading The Reverend Wm. O. Richards  
Sermon The Reverend C. E. Kessler  
Selections Mixed Chorus  
Benediction The Reverend Samuel L. Maxwell

CLASS MOTTO

"Today We Follow, Tomorrow We Lead"  
CLASS COLORS—Pink and Silver  
CLASS FLOWER—Pink Carnation

THE SENIOR CLASS

PRESENTS

*"Here We Go Again"*

A Three Act Comedy

FRIDAY EVENING                      DECEMBER 9, 1955

High School Auditorium

CAST OF CHARACTERS

- Wilbur Maxwell - - - - - RICHARD GUNTER
- Betty Lou Maxwell - - - - - NEDRA GREEAR
- Connie Maxwell - - - - - NOLA LEIGHTON
- John Maxwell - - - - - -GARY LEIGHTON
- Janet Maxwell - - - - - ELIZABETH BLANCO
- Bernadine Smith - - - - - SHARON RICHMOND
- Suzanne Coday - - - - - PAT STEWART
- Arthur Coday - - - - - BILL URQUHART
- Mr. Coday - - - - - STEVE BAIR
- Mrs. Coday - - - - - ANITA LETEY
- Mr. Davis - - - - - LOREN CROUCH
- Mrs. Davis - - - - - ANN WERKING
- Mrs. Allen - - - - - PHYLLIS BRADSHAW
- Roger Coday - - - - - -FRED HURST
- USHERS - - - - - Carmelita Bainbrich, RoseAnna Alessandri, Louise McNulty, Barbara Schroder
- PROMPTERS - - - - - Donna Barnes, Janice Farnum
- MAKE-UP - - - - - Sonya Barringer, Nashalla Buttram, Edwina Stull
- DIRECTOR - Mr. A. Paige                      SPONSOR - Mrs. Volpe

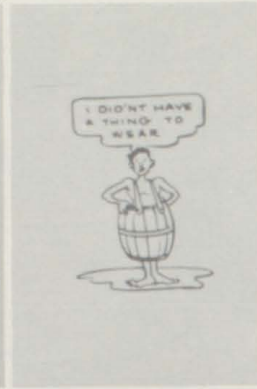




JUNIORS



WILLIAM DAVIES  
Sponsor  
LOUELLA PRETTI  
President



ROBERT WILLIAMS  
Vice President  
TRUDIE LOU SMITH  
Treasurer  
PHILIP GRIFFITH  
Secretary



JON TENBROOK  
Student Body Representative  
JERRY ESTES  
ROBERT BRADSHAW  
ROBERT BARRAILLER

LORRAINE BENDETTI  
RALPH BARTELS  
MAR LANA BERSHENYI



ARTHUR BIDDLE  
KATHY COLE  
JERRY BLANC  
PENNY CLAPHAM  
GREGORY DURRETT

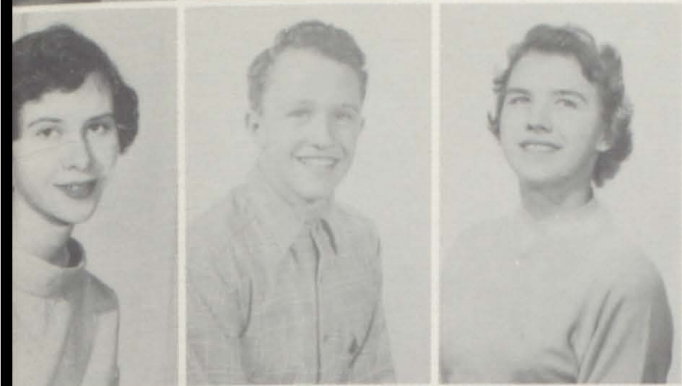


JAMES CALLAN  
VERA CRUZ  
BARTON CLARK  
LEONA HUNT  
PATRICIA BRUDIGAM





LETA LEROUX  
JAY FILSON



CAROL MALONE  
LLOYD HEUSCHKEL  
ELAINE RUPAR



DONALD JENSEN  
JEANETTE PODBEVSEK  
GALE MATTINGLY  
KAREN THURSTON

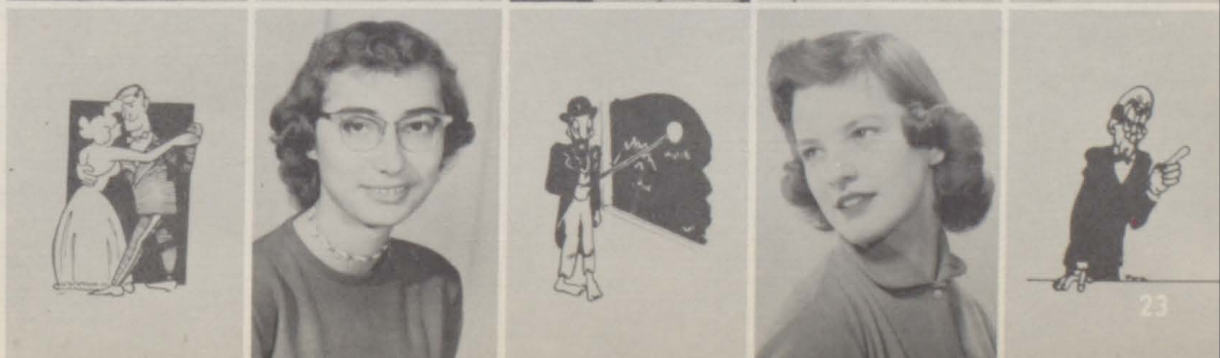
ELAINE SIMPSON  
GERALD McKEEL  
ERLENE ROGERS  
JAMES RESER



LINDA ROOKS  
WILLIAM TURNER  
LENA PECK  
ALAN YANDELL  
CLARA SANDOVAL



KENNETH COLLINS  
NORMA JEAN WAGNER  
ROBERT SPANNAGEL  
JANE LEE STULL  
GLEN BARRETT



# MIND OVER MATTER

Presented by  
**JUNIOR CLASS**  
 March 23, 1956

Director - ANSON PAIGE  
 Class Sponsor -  
**WILLIAM DAVIES**



Junior Snapshots

What's going on up there?



Having tea,  
 Sanch?

Dancers?





SOPHOMORES

MR. SHARP - - - - - Sponsor  
 CAROL NIELSEN - - - - Secretary  
 RAY NIESLANIK - - - - Historian  
 GARY HURST - - Student Council  
 Secretary



# CLAS

Bill Kelso  
 Janet Hargis  
 Thane Lincicome  
 Roberta Heuschkel  
 Howard Marsh



Mary Jo Hillman  
 Terry Meredith  
 Bonnie Raymond  
 Leroy Metcalf  
 Joann Reser



Jerry Olshove  
 Shirley Russell  
 Ronnie Page  
 Caroline Newhouse  
 Jim Springsteel



Mary Sandoval  
 Albert Stark  
 Barbara Smith  
 Joe Tonso  
 Tina Van Gaalen



Larry Volpe  
 Doris Van Over  
 Bradley Yandell  
 Deloris Wagner  
 Marva Sanders





JERRY EARNEST - Student Council  
Representative  
BOB COLLETT - - - - Treasurer  
STEVE DAVIS - - Vice President  
JUDY O'BRIEN - - - - President

OF 1958



Patty Baker  
Dick Adams  
Carole Barringer  
Joe Blanco  
Joanne Benzel



Gary Christensen  
Stella Berges  
Jerry Kelley  
Billie Bershenyi  
Jimmy Drake



Glenda Bostelmann  
Jerry Farrington  
Barbara Brown  
Larry Garrison  
Dorothy Dever



Kenneth Jones  
Betsy Foote  
Everette Hendersen  
Jill Ford  
Jack Harrington



Donna Gravestock  
Ronald Jenkins  
Judy Hamilton  
Buzzer Zancanella  
Laura Mae Harding

Charles Hendersen  
No photo

This is contentment!



OPEN the



SONGBIRDS?



Eyes!



My, what a big mouth you have!

'SOAPH

Do you call this swimming?

Maybe this is a teacher



Smile!



Studios Kid!

SHOTS

Whose hand are you holding?



Great Diver!



Who's coming?





FRESHMEN



Judith Albro  
Robert Alessandri  
Bernie Anderson  
Dwayne Bertels  
Gloria Bendetti



Dennis Bolitho  
LeaAnn Zwiebel  
Gary Brockway  
Marcia Bunn  
Karle Burnett



Clayton Carrington  
Janet Casteel  
Allen Christensen  
Larry Cline  
Dick Collings



John Crook  
Pricilla Cruz  
Iva Dantoni  
Roy Day  
Bill Doose



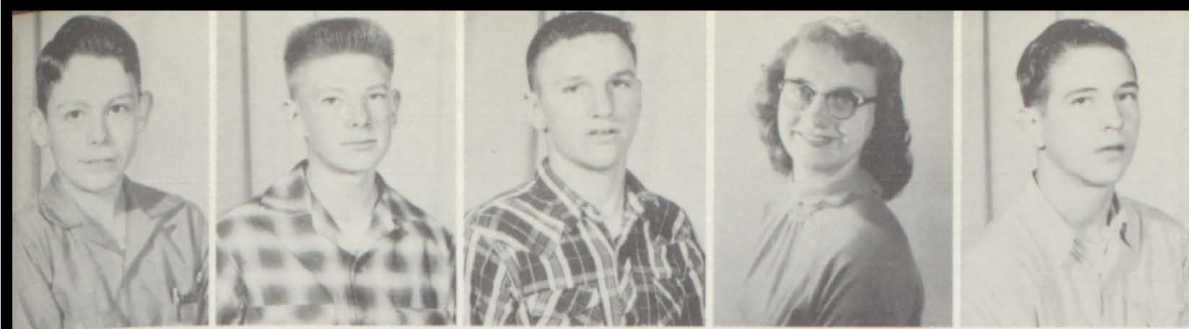
Robert Emery  
Jerry Fedrizzi  
Glenna Flynn  
Sandra Garbusch  
Charles Gomez



Jim Gravestock  
Vernard Guengerich  
Margie Hawk  
Elizabeth Hogsett  
Frances Jammaron



Jon Jefferies  
Duane Jensen



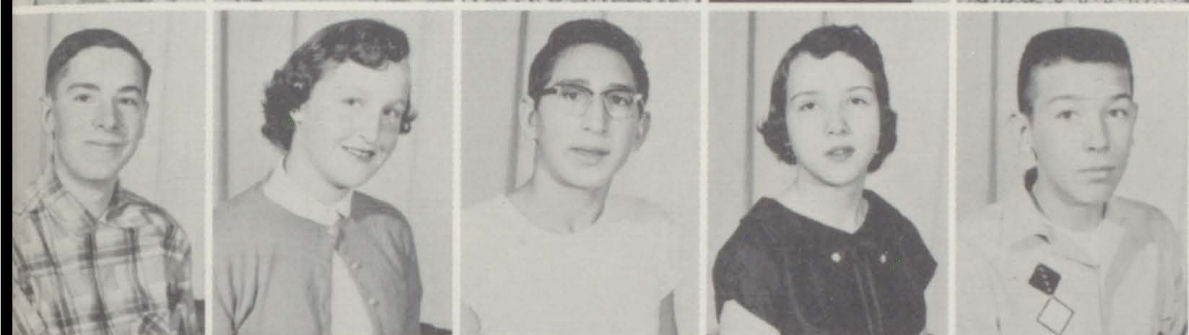
Jim Kenney  
Jim Kyner  
Pete Logan  
Lorraine Logan  
George Marsh



Glenda Martin  
Marvin Martin  
Raymond Martinez  
Ann McFadden  
James McNulty



Steve Messer  
Jean Nation  
Edward Newcomb  
Frances Nieslanik  
Edward Pace



James Peck  
Judy Richmond  
Barney Romero  
Sharon Ronce  
Robert Rupar



Marilyn Scott  
Margie Shue  
Julie Smallwood  
Yvonne Sutton  
Robert Tenbrook



Helen Toomey  
Diane Trevethan  
Marlene Van Gaalen  
Dick Wagaman  
Paula Werking



Norma Williams  
Hugh Wilson

# FRESHMAN "SNAPS"

Who Scared You?



Looking for  
Bugs

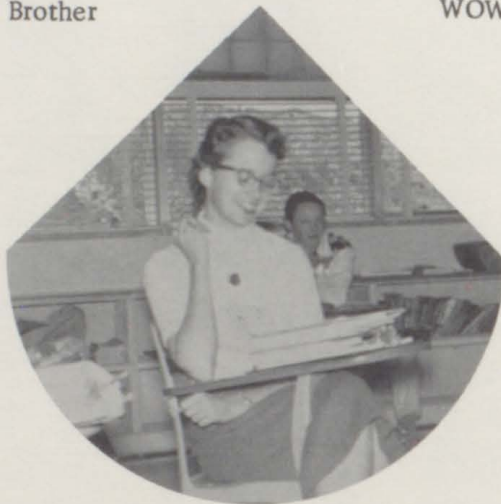


Just in Time

Oh, Brother

WOW!

Glamor Puss



Pretty Good Comics, Huh, Ann?

Let's do the  
lessons - not  
read notes



This is a Boy

So That's the Way You do it

Genius at Work

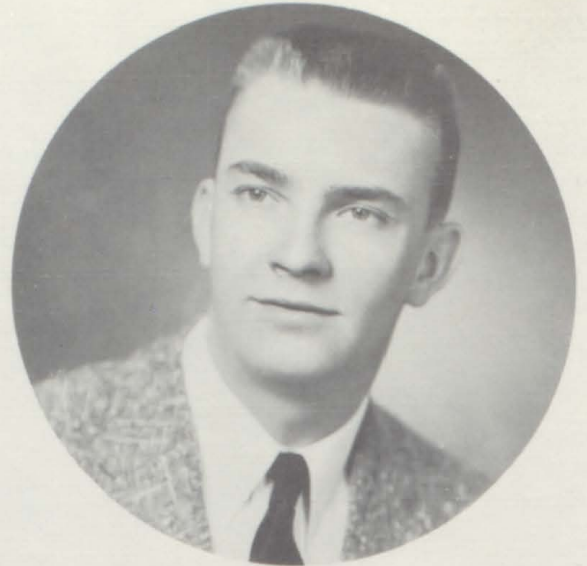


**FAVORITES**

# SENIOR STARS



J  
O  
A  
N  
N  
E  
  
B  
O  
O  
R  
O  
M



J  
O  
H  
N  
  
B  
E  
N  
Z  
E  
L



B  
E  
A  
T  
R  
I  
C  
E  
  
M  
O  
S  
C  
O  
N

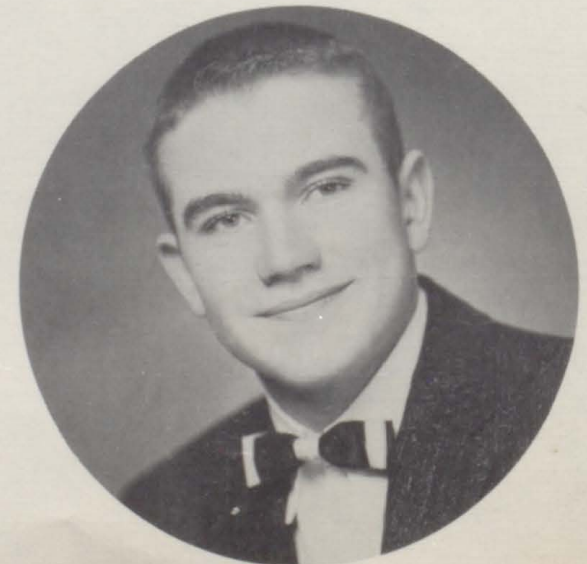


P  
A  
T  
  
P  
O  
E  
R

These we revered  
and named them our stars,  
With outstanding achievements  
We know they'll go far.



A  
N  
N  
  
W  
E  
R  
K  
I  
N  
G



J  
A  
M  
E  
S  
  
N  
I  
E  
S  
L  
A  
N  
I  
K

# FAVORITES

HOMECOMING

QUEEN and KING

Carmelita Bainbrich

Larry Belluchie

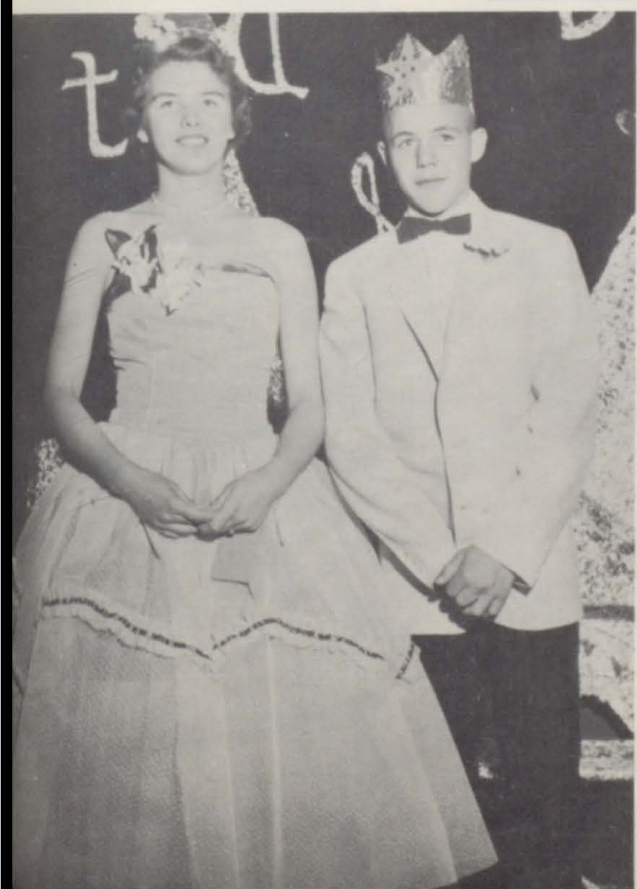


SNOW QUEEN and KING



Nola Leighton

Fred Hurst



JUNIOR - SENIOR PROM

QUEEN and KING

Elaine Rupar

Don Jensen

# SPECIAL

# HONORS



All District  
Tournament Team  
ART BIDDLE



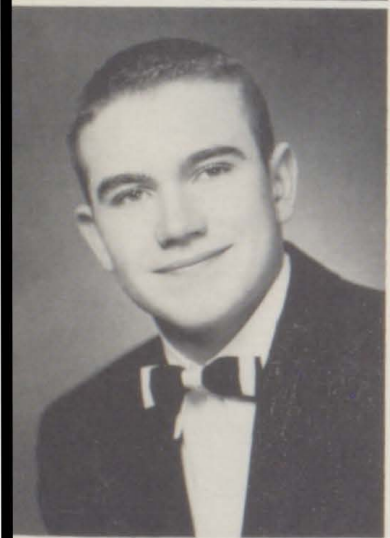
All District  
Tournament Cheerleader  
PAT STEWART



Betty Crocker Award  
JOANNE BOOROM



National FHA Delegate  
ELAINE RUPAR



Babe Ruth Sportsmanship  
Awards

JAMES NIESLANIK



NOLA LEIGHTON



Valedictorian  
NOLA LEIGHTON



Salutatorian  
PAT POER



## NATIONAL HONOR SOCIETY

Extreme left: Jerry Fedrizzi, Trudie Smith, Elaine Rugar, Jane Lee Stull, Mrs. Volpe.

Seniors elected: Ann Werking, Jim Nieslanik, Jerry Hammar, Pat Poer, Joanne Boorum.

Extreme right: Arthur Biddle, Barton Clark, Marvin Martin.

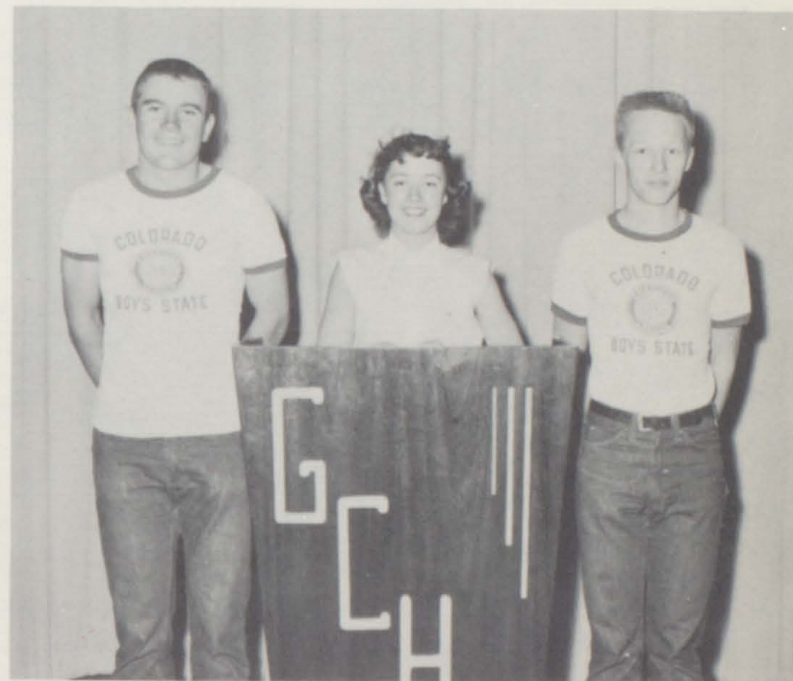


## BOY AND GIRL STATE

Jim Nieslanik

Ann Werking

Bill Urquhart



## "G" CLUB

Top row: J. Nieslanik, D. Jensen, S. Bair, J. Fedrizzi, R. Nieslanik, P. Poer, L. Zancanella. Second row: B. Richmond, D. Watts, J. Callan, J. Tonso, L. Volpe, L. Belluchie, A. Biddle, J. Tenbrook, D. Martin, G. Leighton. Third row: F. Hurst, B. Turner, T. Meredith, B. Collett, J. Benzel, L. Crouch, L. Heuschkel, P. Logan, D. Durrett - Not shown.





MEMORIAL FIELD

DEDICATION CEREMONIES SEPTEMBER, 1955

DEDICATED TO G. C. H. S. GRADUATES  
WHO DIED IN THE SERVICE  
OF THEIR COUNTRY

Jess Dore, Jr.

Paul Simillion

Robert Ullman

Carl Burch

Joe F. Martinez

Vernon V. Duffy

Fred Van Over

Vernon Schleigher

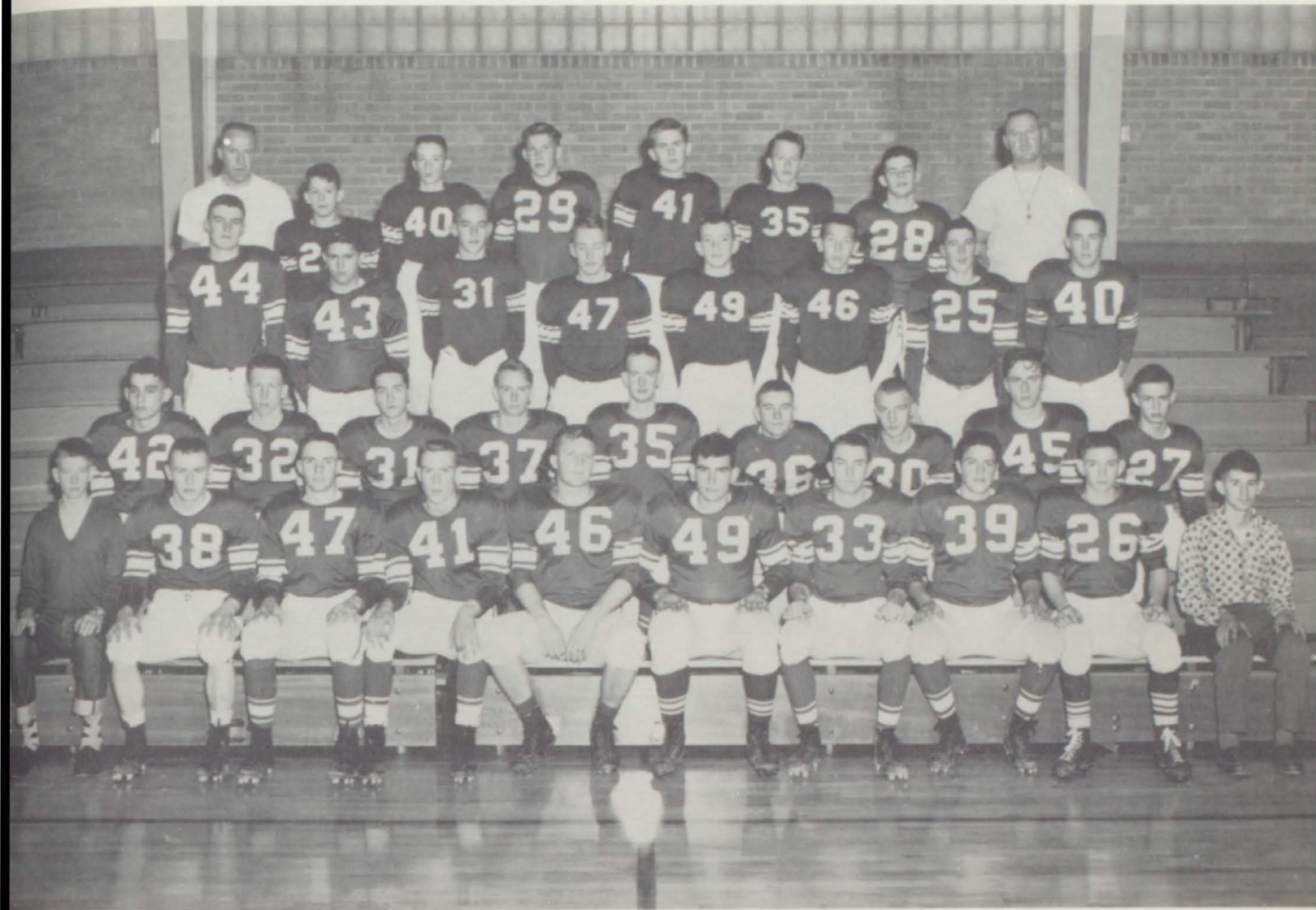
John N. Guild

Orville Deckrow

Leonard F. Rule

Robert Wickham

# NORTH WESTERN CONFERENCE CO-CHAMPS GLENWOOD SPRINGS DEMONS



Front row, left to right: Manager Kyner, Turner, Tenbrook, Crouch, Richmond, Tonso, Benzel, Volpe, Hurst, Manager Zancanella. Second row: Fedrizzi, Wagaman, Callan, Adams, Martin, J. Nieslanik, Collett, Belluchie, Meredith. Third row: Biddle, Blanco, Kelso, Henderson, Bolitho, Rugar, R. Nieslanik, Leighton. Back row: Daniels, Kenny, Collings, Earnest, Doose, Heuschkel, Stark, Stubler. O'Brien and Durrett absent.



**N. J. STUBLER**  
Head Football Coach

### Glenwood

7  
14  
26  
8  
20  
47  
33  
0  
6

### Opponents

7 Delta  
0 Fruita  
13 Craig  
20 Meeker  
6 Rangely  
6 Steamboat  
19 Junction J. V.  
0 Rifle  
6 Rifle



**ROBERT DANIELS**  
Assistant Coach 39

# MEET THE SQUAD



Center - Volpe - Soph.

Quarterback - Benzel - Senior



J. Nieslanik - Senior

Halfbacks -

R. Nieslanik - Soph.



Tonso - Soph.

Tackles -

Richmond - Senior

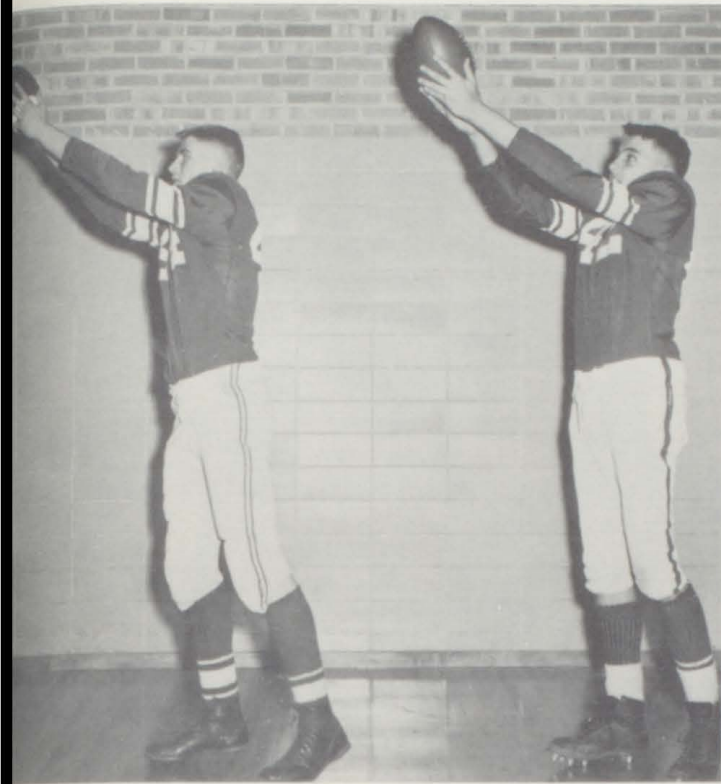


Belluchie - Senior

Guards -

Turner - Junior

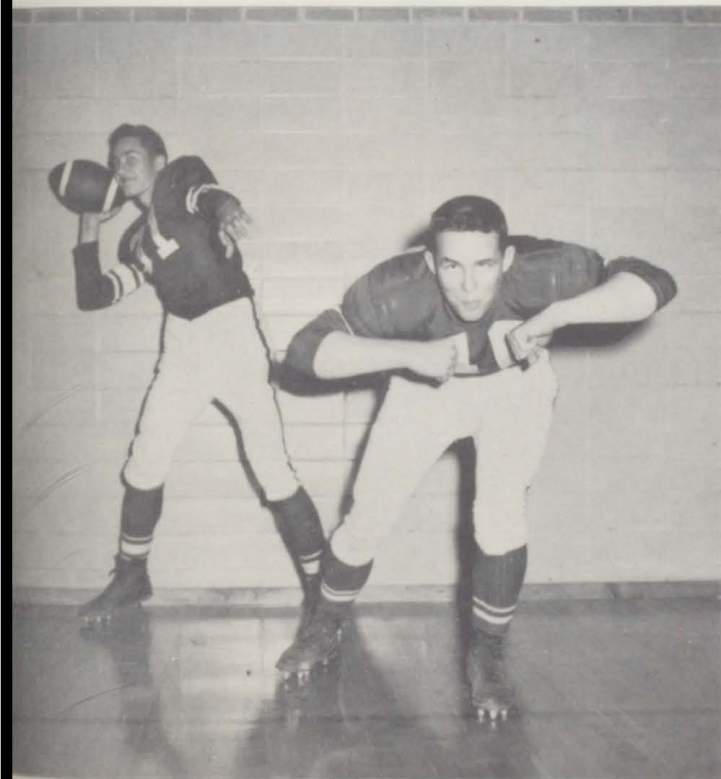
# MEET THE SQUAD



Ends - Biddle - Junior  
Fedrizzi - Freshman



Halfback - Hurst - Senior  
Fullback - Collett - Sophomore  
Halfback - Meredith - Sophomore



Halfback - Callan - Junior  
Center - Leighton - Senior



End - Martin - Senior  
Guard - Crouch - Senior  
Tackle - Tenbrook - Junior

# GLENWOOD SPRINGS DEMONS



First row: J. Callan, R. Nieslanik, Coach Bob Daniels, L. Zancanella, J. Nieslanik, B. Collett. Second row: J. Tonso, D. Martin, J. Fedrizzi, A. Biddle, E. Hunt, J. Benzel.

## LEAGUE GAMES

| Opponents  | Glenwood |
|------------|----------|
| Central    | 41 33    |
| Grand Jct. | 47 35    |
| Paonia     | 42 38    |
| Fruita     | 68 44    |
| Rifle*     | 62 48    |
| Montrose   | 58 59    |
| Meeker*    | 59 56    |
| Paonia     | 38 39    |
| Steamboat* | 68 55    |
| Craig*     | 59 37    |
| Fruita     | 43 31    |
| Rangely*   | 28 47    |



COACH BOB DANIELS

## (League Games, Continued)

|            |    |    |
|------------|----|----|
| Rifle*     | 38 | 36 |
| Meeker*    | 57 | 41 |
| Central    | 36 | 45 |
| Steamboat* | 39 | 60 |
| Craig*     | 50 | 33 |
| Rangely    | 41 | 35 |

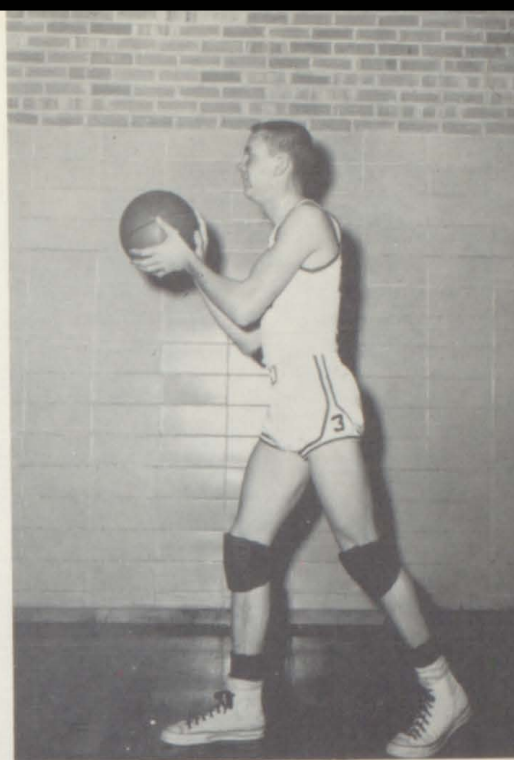
## TOURNAMENT SCORES

| Opponents | Glenwood |
|-----------|----------|
| Steamboat | 50 38    |
| Rangely   | 25 47    |
| Craig     | 64 43    |

\* Conference Games



J. NIESLANIK - Senior Forward



J. BENZEL - Senior Guard

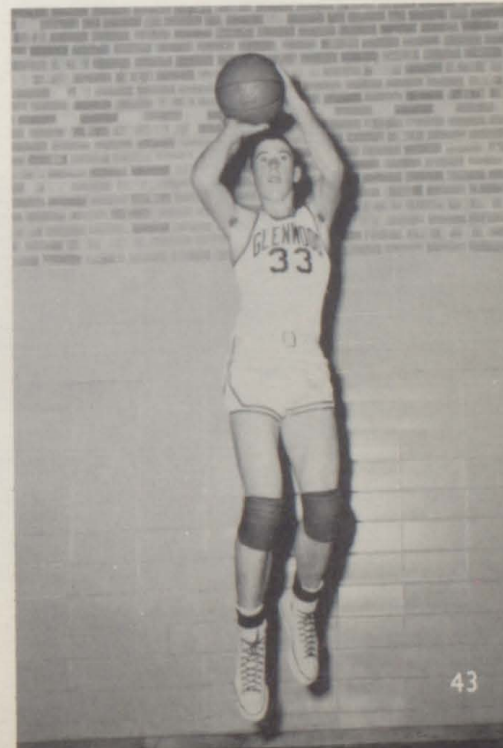
ART BIDDLE WAS NAMED TO THE ALL-DISTRICT TOURNAMENT TEAM AT MEEKER.



A. BIDDLE - Junior Center

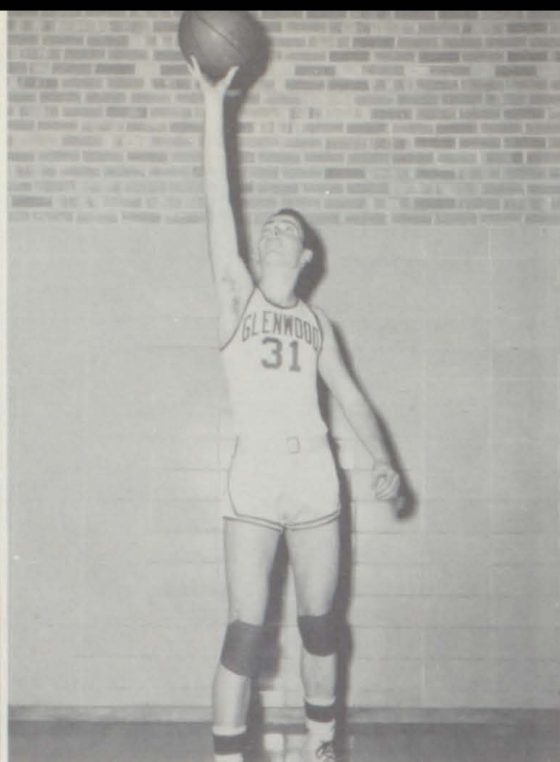
J. CALLAN - Junior Forward

R. NIESLANIK - Sophomore Guard





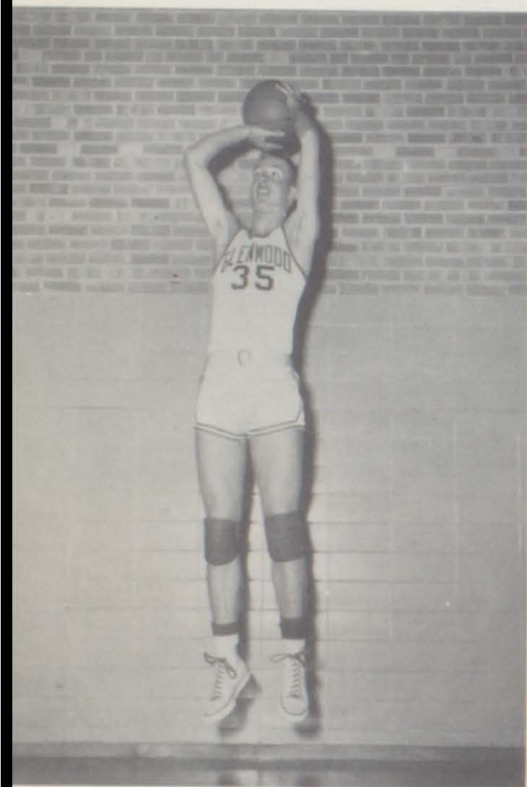
J. TONSO - Sophomore Guard



E. HUNT - Senior Forward



B. COLLETT - Sophomore Guard

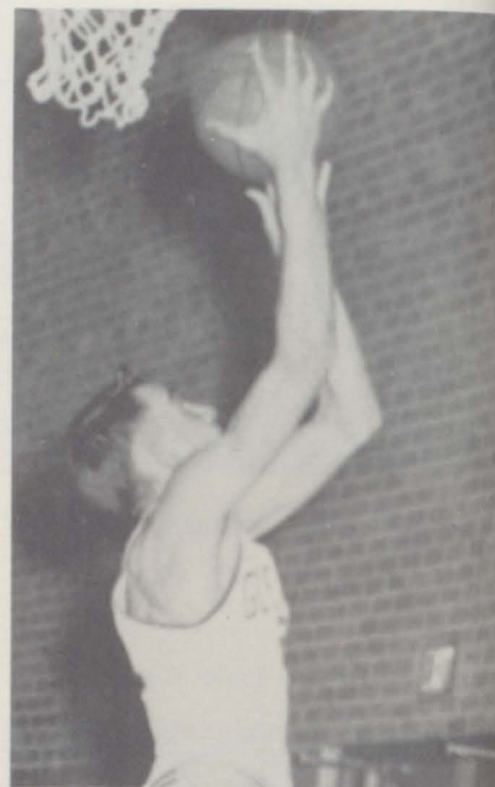


D. MARTIN - Senior Center

Meet the "B" Squad



N. J. STUBLER - Coach



J. FEDRIZZI - Freshman Center



Front row: J. Farrington, D. Collings, M. Martin, T. Meredith, S. Messer. Back row: J. Kenney, V. Guengerich, J. Gravestock, B. Rugar, D. Wagaman, J. Fedrizzi, D. Bolitho, R. Jenkins, A. Stark, A. Christensen.



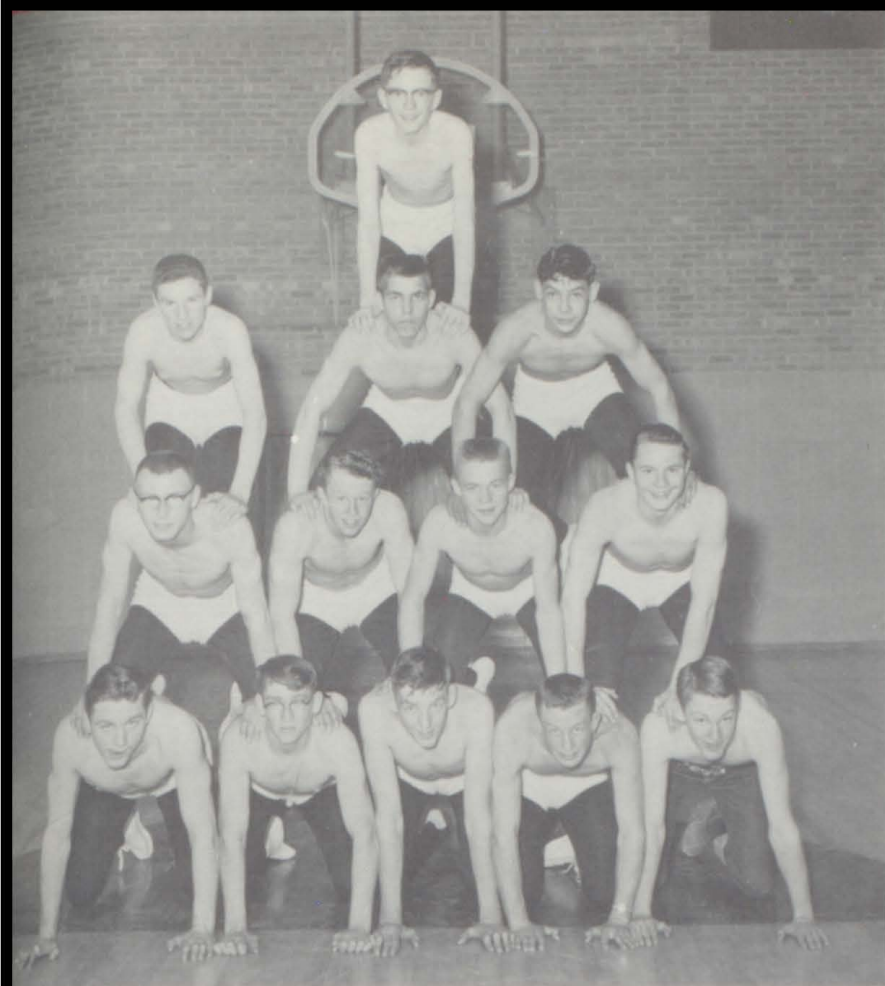
# WRESTLING

The captains for the 1956 wrestling squad were Larry Belluchie and Pat Poer. Poer and Belluchie also took third place each in the 1956 Meeker Wrestling Tournament.

First row: L. Belluchie, P. Poer, W. Walker, S. Bair, E. Hendersen. Second row: B. Turner, L. Heuschkel, D. Jensen, J. Kelley. Third row: P. Logan, R. Gunter, R. Martinez. Fourth row: J. McNulty.

Coached by H. Post.

Additional pictures on page 46.



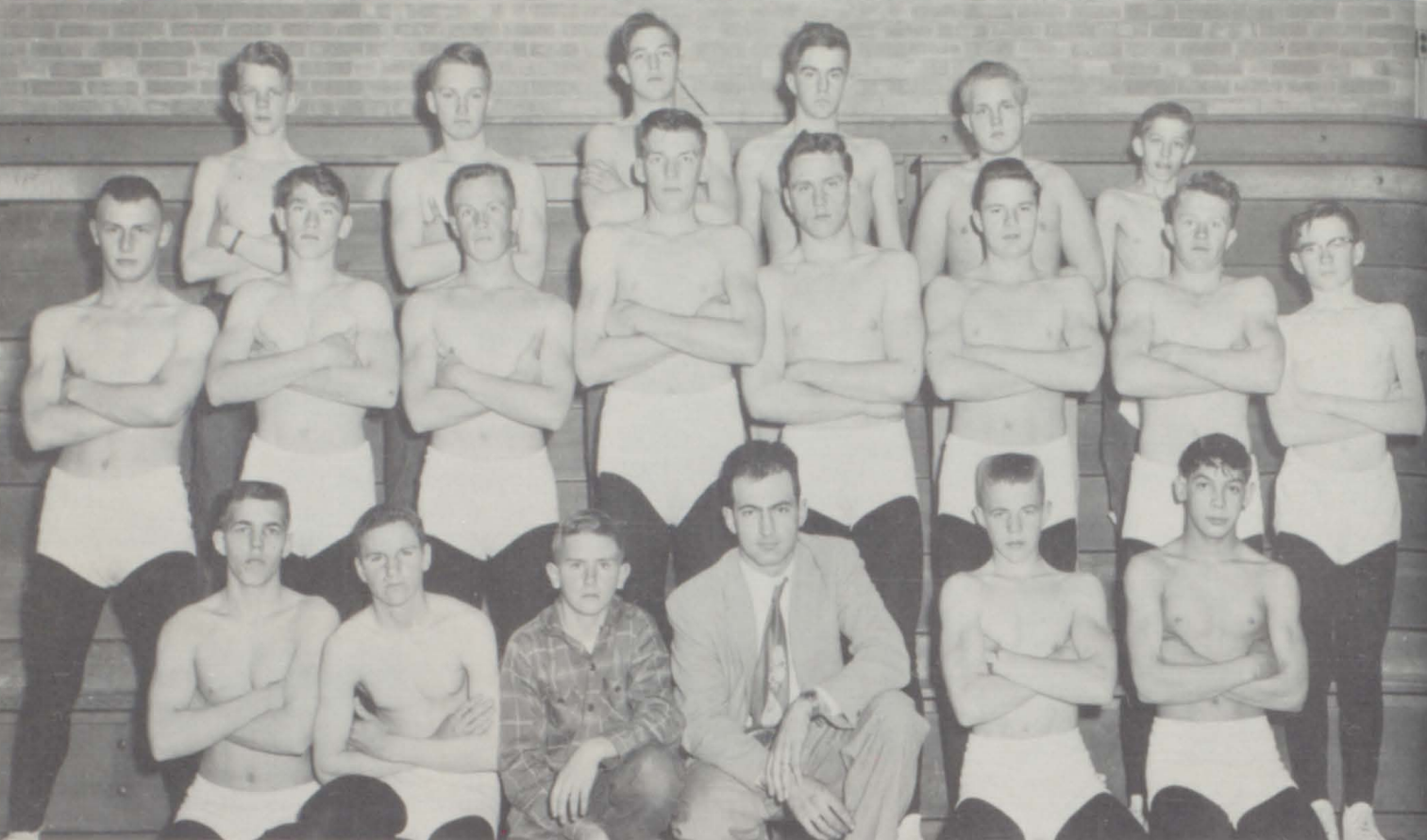
STATE CLASS "A" MEET AT BOULDER. G. C. H. S. team took fourth place in State Meet. Jim Callan tied for first in high jump, 6'1". Jim Neislanik, second in 440. Art Biddle, third in 880. WESTERN SLOPE MEET AT FRUITA. G. C. H. S. tied for fifth place. FRESHMAN, SOPHOMORE MEET AT CRAIG. Glenwood took first place with 77.5 points.

# TRACK



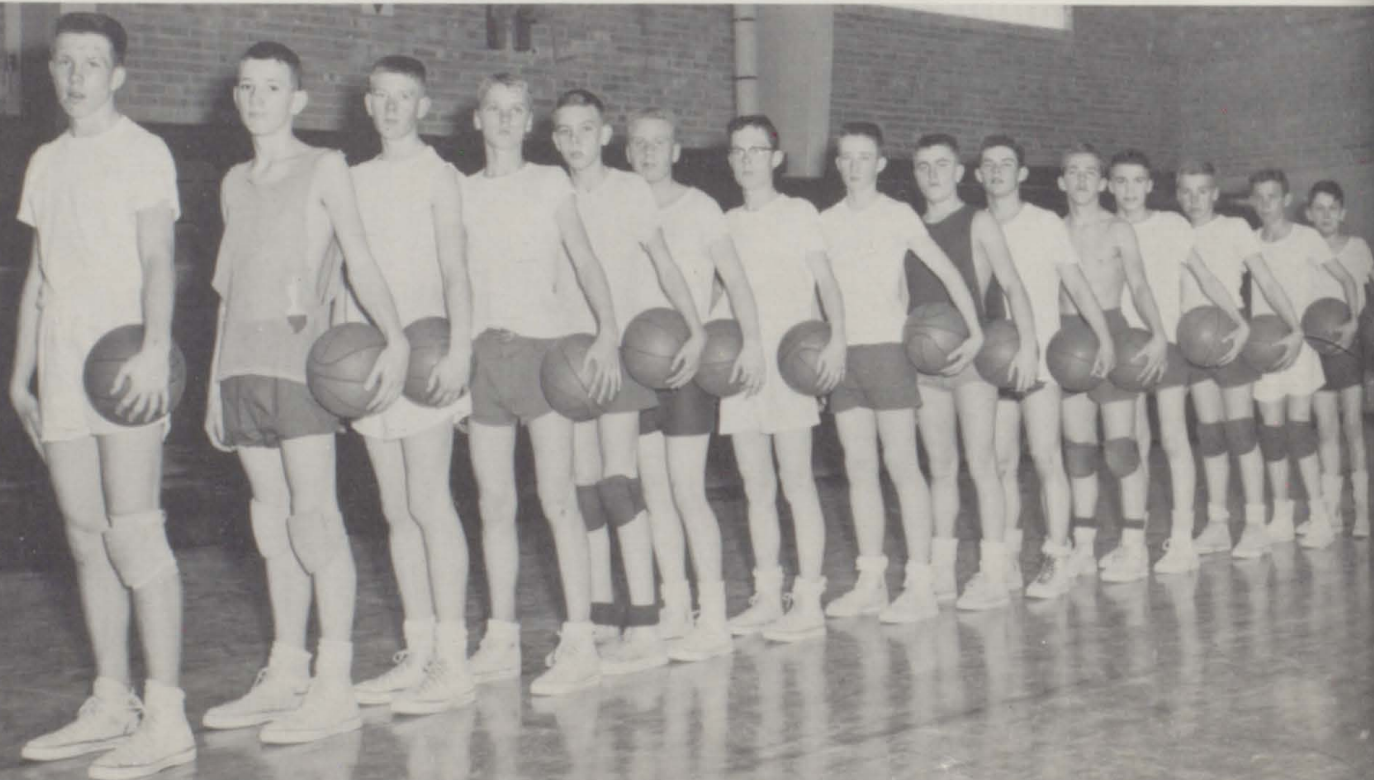
Back row: Coach Stubler, D. Wagaman, J. Tonso, J. Fedrizzi, A. Biddle, G. Leighton. Second row: B. Rupar, B. Doose, J. Callan, D. Bolitho, L. Belluchie, J. Benzel, J. Nieslanik. Third row: P. Logan, T. Meredith, B. Collett, A. Stark, R. Nieslanik, J. Kelley. Not shown in picture: D. Bartels, R. Bradshaw, A. Christensen, R. Day, J. Gravestock, R. Jenkins, J. Kyner, E. Pace, P. Poer, B. Urquhart, L. Volpe, Coach Daniels.

## WRESTLING

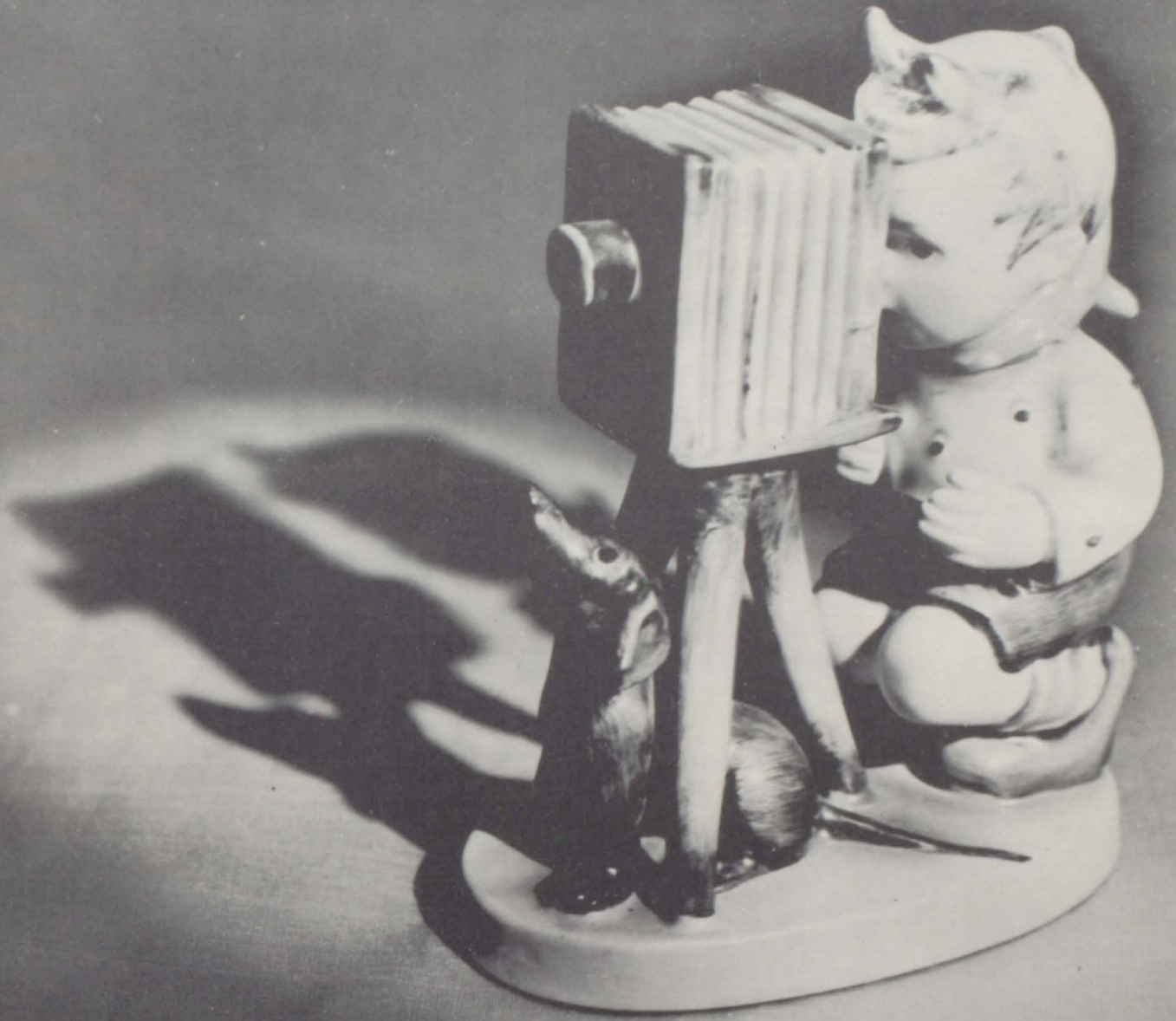


Front row: B. Gunter, P. Logan, H. Wilson, Manager; H. Post, Coach; D. Jensen, R. Martinez, Second row: B. Turner, P. Poer, S. Bair, W. Walker, L. Belluchie, J. Kelley, L. Heuschkel, J. McNulty. Third row: R. Day, E. Hendersen, C. Marsh, B. Tenbrook, L. Garrison, J. Crook.

## SPRING BASKETBALL



Left to right: D. Wagaman, D. Bolitho, J. Kyner, J. Gravestock, M. Martin, R. Jenkins, T. Lincicome, D. Collings, G. Farrington, A. Stark, S. Messer, V. Guengerich, A. Christensen, L. Metcalf, J. Kenney.



**ACTIVITIES**

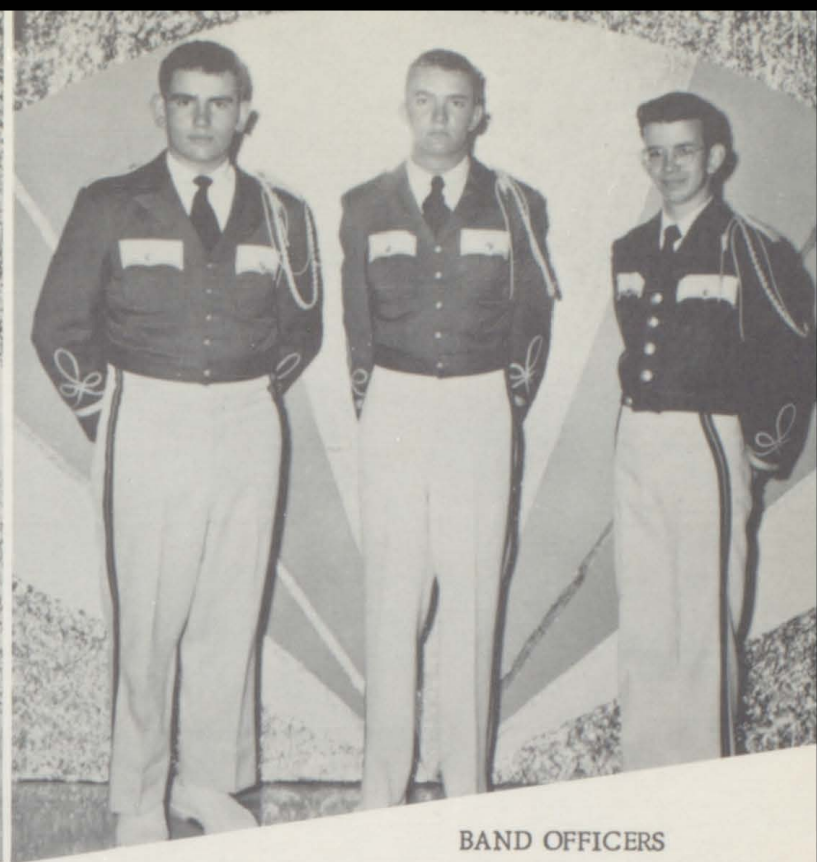


Row one: M. Webb, J. Fortsch, C. Elting, M. Griffith, F. Diemoz, J. McNulty, J. Casteel, S. Saunders, M. Ellsworth, J. Springsteel,  
 J. Kenny, G. Brockway. Row two: C. Hasley, D. Zemlock, M. Scott, K. Cole, B. Raymond, T. Lincome, D. Griffith, B. Alessandri,  
 L. Cline, N. Vidakovich, C. Nielson, P. Price. Row three: L. Nordhausen, D. Collings, L. McNulty, G. Flynn, B. Urquhart, D. Bolitho,  
 E. Henderson, E. Hogsett, J. Benzel, B. Doose, A. McFadden, T. Van Gaalen, J. Boorum. Row four: D. Trevehan, G. Martin, E. Rugar,  
 B. Rugar, R. Day, D. Martin, J. Hammar, L. Volpe, J. Tonso, G. Hurst, R. Page, T. Meredith, J. Filson, Twirlers: D. Barnes, J. Ben-  
 zel, P. Clapham, J. Stull, J. Farnum.



TWIRLERS

Joanne Benzel  
Jane Lee Stull  
Penny Clapham  
Janice Farnum  
Donna Barnes



BAND OFFICERS

Joe Tonso  
John Benzel  
Gary Hurst



FRITZ BRAMBLE

BAND DIRECTOR

DANCE

BAND



Standing: Bill Urquhart, Thane Lincicome, Terry Meredith, Larry Volpe, Douglas Martin, Jerry Hammar, Bob Rupar, Jay Filson, Gary Hurst. Seated: Dick Collings.

# MUSIC NEWS AND AWARDS

## COMBINED BAND AND GLEE CLUB

Concert  
November 18, 1955

Band Concert  
"MUSICAL MOMENTS"  
February 2, 1956

SOLO CONTEST  
March 28, 1956

GLEE CLUB CAROL DINNER  
December 15, 1955

Glee Club Concert  
"ON WINGS OF SONG"  
March 1, 1956

CLINIC CONCERT  
April 27, 1956

## 1956 MUSIC CLINIC Clinicians

Mr. Warner Imig, Dean of Music, University of Colorado  
Mr. Hugh McMillen, Director of Bands, University of Colorado



## STATE HONOR BAND

Greeley, Colorado

Gary Hurst

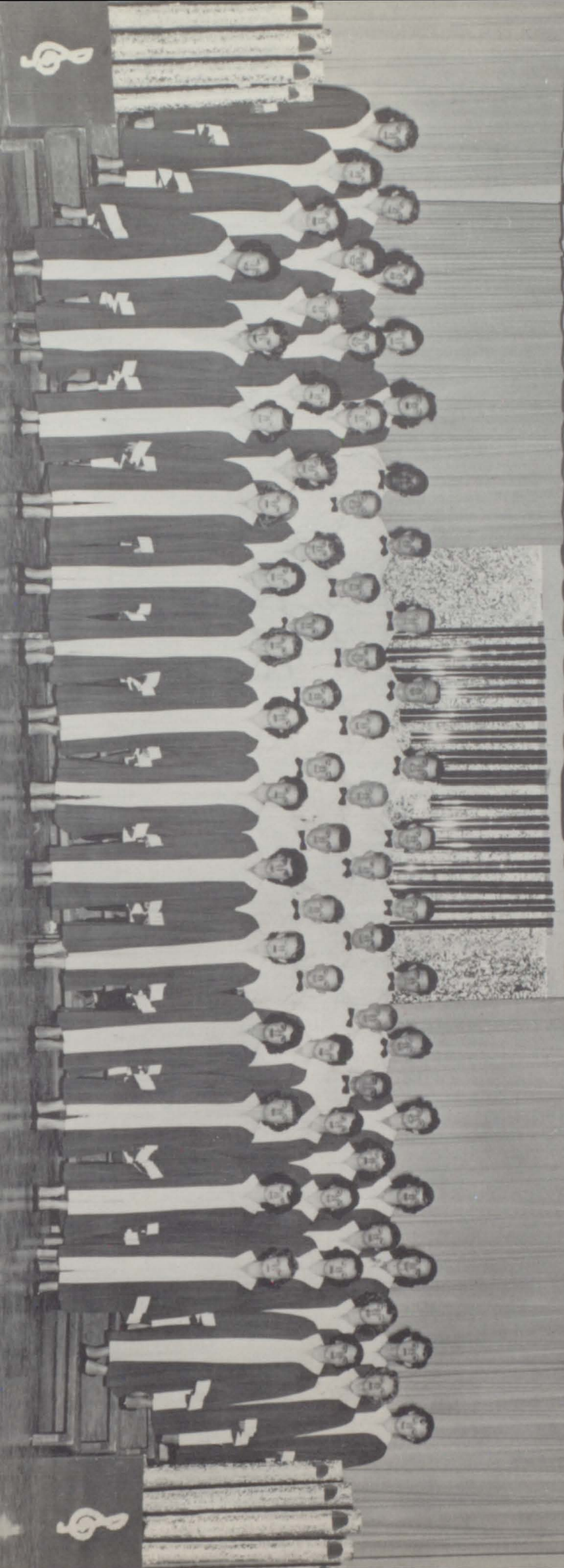
## WESTERN SLOPE BAND

Gunnison, Colorado

Bob Rugar, Bill  
Urquhart, Carol Nielsen



# MIXED CHORUS



Row four: D. Wagner, B. Foote, L. Zwiebel, B. Brown, J. Hamilton, B. Anderson, R. Bartels, D. Waganan, D. Marth, J. Fedrizzi, J. Tenbrook, B. Tenbrook, P. Griffith, B. Clark, E. Rupa, G. Martin, J. Podberek, G. Flynn, D. Trevelian. Row three: J. Smallwood, L. Pretti, N. Wagner, L. Leroux, E. Pace, L. Cline, G. Hurst, R. Page, R. Jenkins, D. Adams, J. Bianco, B. Collett, J. Drake, L. McNulty, E. Blanco, J. Boorum, T. Van Gaalen. Row two: L. Peck, P. Bradshaw, P. Hubbard, J. Albro, J. O'Brien, C. Gomez, J. Reser, J. Peck, G. Farrington, L. Newcomb, J. McNulty, J. Neukirch, S. Roncé, S. Berges, H. Toomey, C. Nielson. Row one: V. Cruz, M. VanGaalen, B. Moscon, J. Ford, K. Cole, J. Farnum, J. Reser, D. Van Over, J. Cox, K. Burnett, M. Sandoval, D. Barnes, E. Rogers, J. Hargis.



BOYS' ENSEMBLE

First row: G. Hurst, J. Reser, L. Newcomb, J. Drake,  
 Second row: J. Blance, R. Page, B. Collett. Third  
 row: Ralph Bartels, D. Martin. Fourth row: J. Ten-  
 brook,



GIRLS' ENSEMBLE

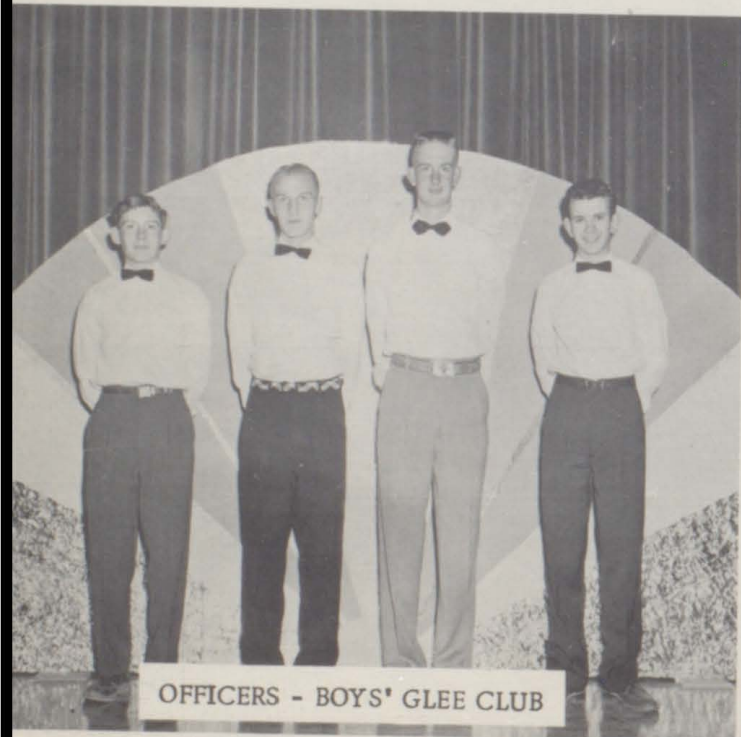
First row: L. Leroux, E. Blanco, G. Martin, J. Reser,  
 Second row: K. Burnett, V. Cruz, D. Barnes. Third  
 row: B. Smith, E. Foote, J. Farnum - not shown,



MUSIC

TEAM

First row: B. Raymond, G. Flynn, T. Van Gaalen, G. Martin, J. Boorum, M.  
 Scott, C. Nielsen. Second row: G. Hurst, A. McFadden, E. Rupar, J. Filson.  
 Third row: J. Benzel, J. Hammar, B. Rupar.



OFFICERS - BOYS' GLEE CLUB

52 J. Reser, B. Collett, D. Martin, G. Hurst.



OFFICERS - GIRLS' GLEE CLUB

B. Moscon, E. Blanco, P. Bradshaw, D. Barnes.



# BOYS AND GIRLS GLEE CLUB

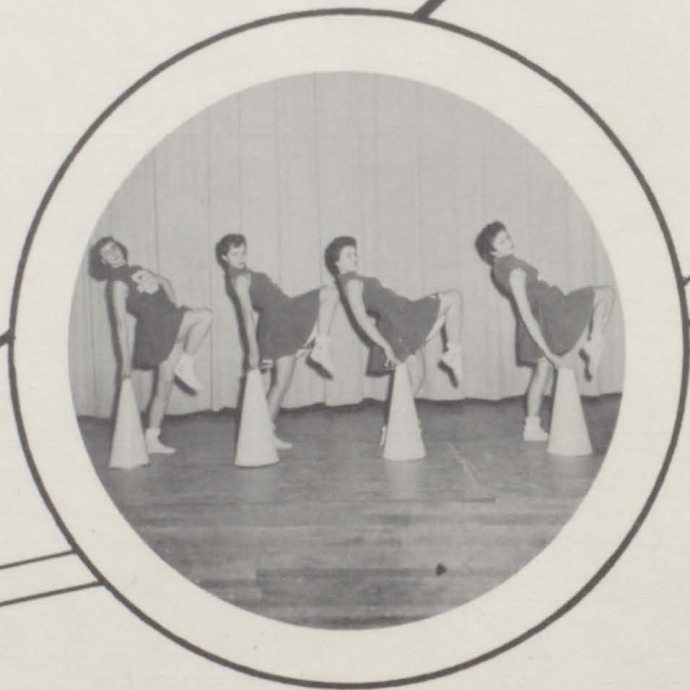


Row one: C. Gomez, J. Reser, J. Peck, J. Drake, J. Farrington, L. Newcomb, J. McNulty. Row two: E. Pace, L. Cline, G. Hurst, R. Page, R. Jenkins, D. Adams, J. Blanco, B. Collett. Third row: B. Anderson, R. Bartels, D. Wagaman, D. Martin, J. Fedrizzi, J. Tenbrook, B. Tenbrook, P. Griffith, B. Clark.



Row one: V. Cruz, M. Van Gaalen, M. Sandoval, J. Ford, K. Burnett, B. Moscon, D. Barnes, E. Rogers, J. Hargis. Row two: K. Cole, J. Farnum, J. O'Brien, P. Hubbard, J. Albro, S. Berges, J. Reser, J. Neukirch, J. Cox, D. VanOver. Row three: L. Peck, P. Bradshaw, B. Raymond, J. Smallwood, L. McNulty, L. Pretti, D. Trevethan, S. Ronce, T. Van Gaalen, H. Toomey, C. Nielson. Row four: L. Leroux, N. Wagner, D. Wagner, L. Zwiebel, B. Brown, E. Rugar, J. Hamilton, G. Martin, J. Podbevsek, G. Flynn, E. Blanco, J. Boorum.

# PEP CLUB



# CHEERLEADERS

Back row: B. Foote, D. Dever, B. Brown, J. Stull, J. Benzel, A. McFadden, M. Bershenyi, Mrs. Hammar, Sponsor; P. Werking, S. Barringer, P. Baker, N. Buttram, B. Smith, J. Podbevsek, E. Rupar. Second row: G. Martin, L. Peck, S. Russell, M. Bunn, C. Barringer, L. Bendetti, B. Raymond, T. VanGalen, P. Bradshaw, S. Richmond, E. Blanco, S. Berges, D. Trevethan, J. Reser. Third row: T. Smith, H. Toomy, G. Bendetti, M. Hawk, J. Richmond, M. Scott, F. Nieslanik, J. Ford, A. Werking, C. Nielson, N. Williams, L. Leroux, P. Clapham. Front row: C. Malone, P. Hubbard, C. Bainbrich, J. Casteel, K. Burnett, F. Jammaron, S. Garbusch, J. Hargis, M. VanGalen, B. Moscon, D. Barnes, E. Rogers. Front. Cheerleaders: L. Hunt, P. Stewart, L. Pretti, A. Letey.

# F.H.A.



Front row: F. Jammaron, M. VanGaal, I. Dantoni, L. Logan, L. Pretti, M. Bunn, C. Barringer, R. Alessandri, P. Cruz, S. Garbusch. Second row: G. Bendetti, L. McNulty, J. Podbevsek, S. Russell, S. Ronce, J. Nation, D. Gravestock, R. Heuschkel, D. Trevethan, S. Berges, E. Blanco. Third row: M. Hawk, D. Wagner, E. Rupar, L. Zwiebel, P. Werking, Mrs. Graves, P. Baker, G. Flynn, B. Smith, J. Boorom, F. Nieslanik.



## F. H. A. OFFICERS

R. Heuschkel, Historian; F. Nieslanik, News Reporter; L. Pretti, Vice President; J. Podbevsek, Song Leader; C. Barringer, Corresponding Secretary; D. Wagner - B. Smith, Co-Treasurer; E. Rupar, President; G. Bendetti, Recording Secretary.

## WOOL GROWERS

Front row: M. Hillman, S. Berges, C. Barringer, D. VanOver, M. Sandoval, R. Heuschkel, B. Raymond, D. Wagner, Back row: G. Bostelman, B. Smith, J. Boorom, P. Werking, P. Baker, D. Gravestock, C. Nieslen.



PUB CLUB



Top row: Phyllis Bradshaw, Betsy Foote, Ann McFadden, Dick Baillie, Mrs. Stapp, Phil Griffith, Dotty Dever, Jane Lee Stull, Middle row: Roberta Heuschkel, Edwina Stull, Barton Clark, Robert Barrailler, Ronnie Page, Judy Richmond, Bill Urquhart. Bottom row: Penny Clapham, Trudie Smith, Steve Davis, Pat Stewart, Joanne Reser. Not in picture: Judy O'Brien, Pat O'Brien, Loren Crouch, and Nedra Greear.

STUDENT COUNCIL



Standing: Bob Richmond, Art Biddle, Jon Tenbrook, Mr. Allen. Sitting: Gary Hurst, Anita Letey, Jim Kyner, Marvin Martin.

KEY CLUB



Top row: Gary Leighton, Jack Harrington, Bob Richmond, Art Biddle, Larry Volpe, Joe Tonso, Bob Collett. Bottom row: Mr. Allen, Terry Meredith, Bob Bradshaw, Bob Rugar, Gary Hurst, Gary Brockway.



Guess who!



How many?



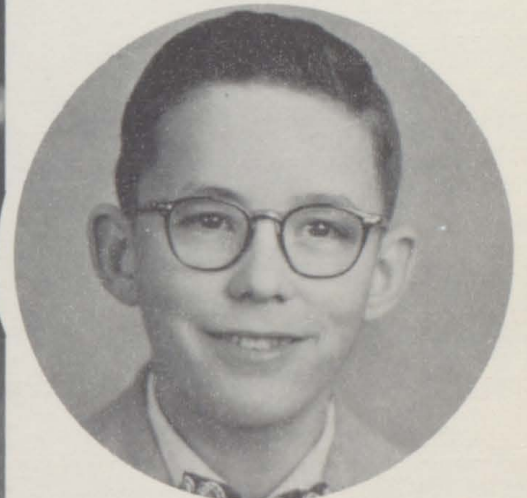
Bair (?) Hug!



One half --



What price glory?



The other half.

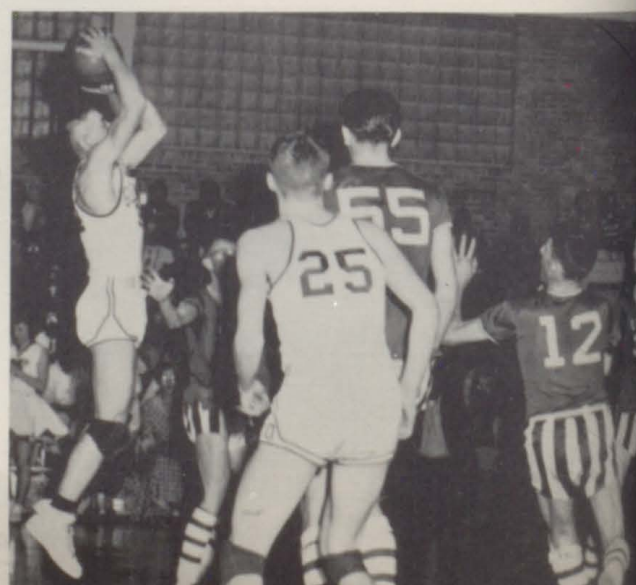


Ugh!



Surprise!

# SNAPS



# SPORTS SNAPS



Ray Nieslanik goes around end at Steamboat.

Pat O'Brien, Bob Richmond, and Jimmy Nieslanik were elected tri-captains for the year '55.



Pat O'Brien goes through the line at Rangely.

Coach Stubler, assisted by Bob Daniels, now in his tenth year at G. C. H. S. has had another good year coming in with the North-Western Co-Champs.



Jim Nieslanik goes through the line against Rangely.

Buz "Massy" Zancanella was the football manager for his second year.

Jim Kyner was assistant football manager for the '55 season.

# SNAPS

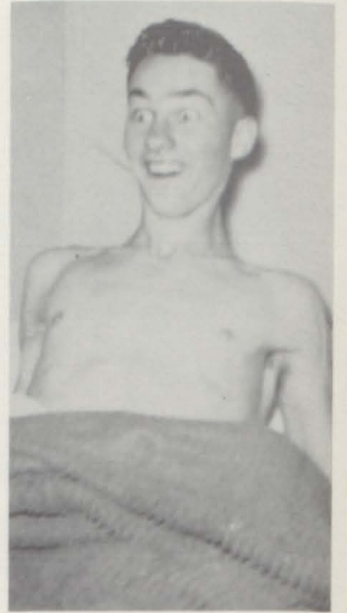


What Seems to be the Trouble?

Supreme Court



Ohh --



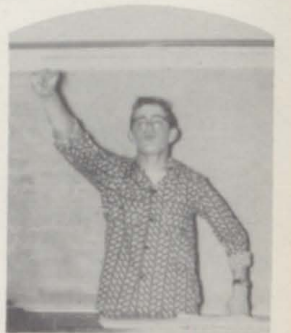
Oh!



Guess Who?



All in Favor?



Substitute?



Swami



Help!



Dazed!



Red and White Winners



The Follies



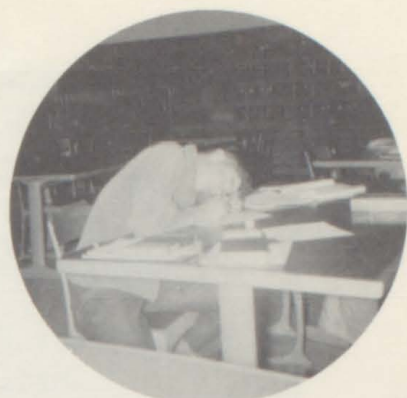
Wow!



Gunter's

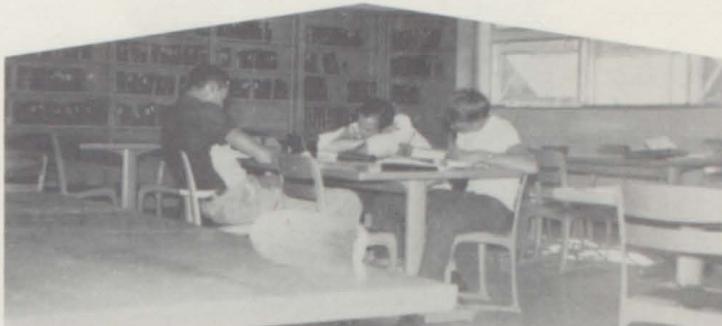


Trophies



Zzzzz--

Hide-away



Studios



Let the girl go.

Gay



Extra-Curricular Activities



Star gazer

The Chase



Boys! Where?



Cheese

It was this way, see



Gentleman Wanted



Centipede

(Advertisement)



# Bullock's

Famous for Famous  
Labels

Nationally  
Advertised  
Merchandise  
at  
Nationally  
Advertised  
Prices

Barbara Brown

Dorothy Dever



8th and Grand

Phone 9



Compliments of

## Lariat

BEAUTY SALON

Dorothy Dever, Mabel Brooks

Phone 78-J

307--8th St.

# ELLIOTT

EQUIPMENT COMPANY

International Harvester Products  
and  
Lincoln - Mercury Cars

Glenwood Springs  
Hi-way 6-24



# GALLAGHER'S

RESTAURANT



In North Glenwood Springs  
On the Main Street of the West

Glenwood Springs

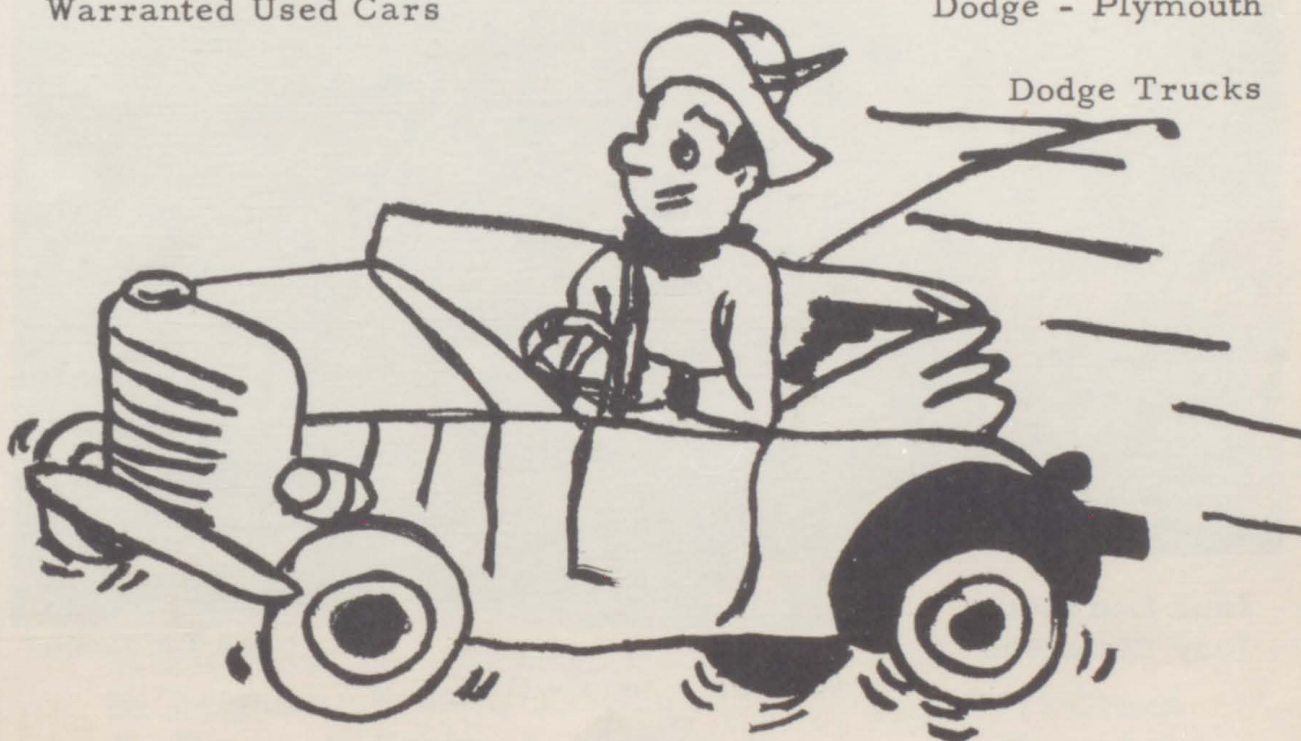
Phone 784

# OSBORNE MOTORS

Warranted Used Cars

Dodge - Plymouth

Dodge Trucks



Glenwood Springs

Quality Serviced



CHASE  
*Pharmacy*

728 Grand Avenue

Phone 720

Alice Riley, Louise Buttram, Grace Hess, Tom Hitt, Elaine Rupar, Dottie Dever.

Congratulations, Seniors

Elizabeth Arden  
and  
Revlon

D'Orsay  
and  
Mary Chess

LINCICOME-WOOD

MOTOR CO



Jane Lee Stull  
Judy Richmond

Ann Werking  
Nola Leighton

Pontiac - Jeep - GMC  
Buick

# UNITED

LUMBER AND MERCANTILE CO.



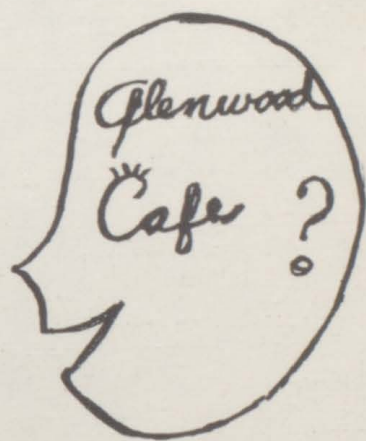
Jane Lee Stull

Judy Richmond

We Don't Want All of the Business  
We Just Want Yours.

Yards Conveniently Located at  
Glenwood Springs - Silt - Aspen - Carbondale

# GLENWOOD CAFE



J. Richmond, A. Werking, E. Ruper,  
N. Leighton, J. Stull, J. Hargis,  
D. Dever, J. Reser, J. Podbevsek

811 Grand  
Phone 116

Mr. Leighton  
Mrs. Leighton  
Nola Leighton

Ann Werking  
Judy Richmond  
Jane Lee Stull

Welcome to STARLIGHT LODGE



Phone 189

Open All Year

"A Home Away From Home"

West 6th  
RAE AND NOLA LEIGHTON

Highway 6-24  
Glenwood Springs, Colo.

## KENROSE MARKET

Groceries - Meats  
Free Delivery



Ann Werking, Phyllis Bradshaw, Bill Doose, Bob Doose  
Open 8 A. M. - 8 P. M.

7 Days a Week  
Home Owned by BOB DOOSE

With Free Delivery  
Glenwood Springs - Phone 248-J



James Harrington, Janice Farnum, Wesley Walker, Ronald Martin, James Poer  
 The World's Largest Hot Mineral Spring Swimming Pool

Open to the Public

Beneficial to Your Health and Happiness

The Easiest Place in the World to Learn to Swim---  
 and Everyone Should Learn to Swim

GLENWOOD HOT SPRINGS COMPANY AND HOT SPRINGS LODGE

FRANK E. KISTLER, President and Manager

100 Beautiful Rooms



J. Stull, E. Rugar, B. Smith, J. Podbevsek, N. Leighton, J. Richmond,  
 S. Russell, J. Reser, J. Hargis, A. Werking, D. Dever.

BRYANT DRUG STORE

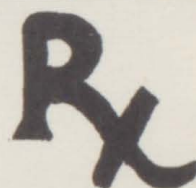
Druggist  
 Prescriptions

Walgreen Service  
 Free Delivery

The Store  
 of Service

Glenwood Springs 108

803 Grand Avenue



JACQUES GRAND AVENUE

Dresses  
 and  
 Formals



Suits  
 and  
 Blouses

J. Farnum, E. Rugar, D. Dever  
 Congratulations

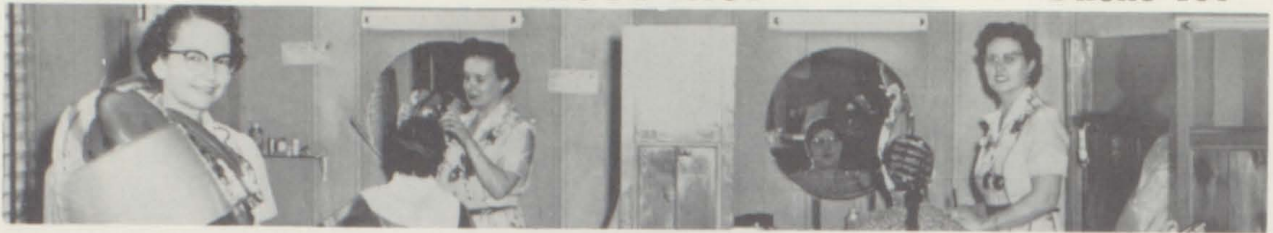
Glenwood Springs,

Colorado

# BARBARA'S

BEAUTY SHOP

Phone 168



Gladys Robertson, Barbara Velasquez, Peggy Bundy.  
Specializing in--

Permanent Waving, Cutting, Manicuring, Hair Tinting



Ann Werking, E. W. Johnson, Joanne Boorum,  
Mike Olshove, J. Podbevsek, Nola Leighton.

Compliments of

## MIKE'S

PLUMBING AND HEATING

Gas and Electric Appliance

We Specialize in Servicing

8th and Cooper Phone 6



Congratulations

## MEREDITH

STUDIO

Portraits

Oil Colorings

School Photos a Specialty

Camera Supplies

Commercials

J. Richmond, J. Reser, J. L. Stull, Nola  
Leighton, Mr. Meredith, Janet Hargis.  
Phone 37

Compliments of

## BROCKWAYS

HOME FURNISHINGS

Your Lane Chest Dealers  
822 Grand Ave. Phone 57

Glenwood Springs

J. Boorum, E. Rugar, Gene  
Brockway.





Compliments of

# Raymond's

PRINTING AND  
STATIONERY

Glenwood Springs



Lillian Rowe, Vernon Raymond,  
Darwin Raymond, Bunk Raymond,  
Robert Raymond.



# TROY LAUNDRY & DRY CLEANERS

Joanne Boorom, Dick Collings,  
Helen Pedersen, Naomi Dozier,  
Bill Urquhart.

722 Cooper Phone 40  
Glenwood Springs

Compliments of

# PAT BELL

AGENCY

217 8th 73  
Janet Hargis, Jane Lee Stull



# LOYD LEWIS

AGENCY

"Insure in Sure Insurance"  
MR. LEWIS, MRS. LEWIS

721 Grand  
Glenwood Springs





# Glenwood Post

Read "We, the Students"

Follow the Demons

Congratulations, Seniors

Service Always--Quality First

**FOSTER**  
LUMBER COMPANY

Lumber - Paint - Hardware

Glenwood Springs

Phone 69

Congratulations to the SENIOR CLASS of '56

**PENNEY'S**

Pay Cash

Pay Less

Sales - DeSoto - Plymouth - Goodyear Tires - Service

**TENBROOK**  
GARAGE

Body and Fender Work

Gas and Oil

Glenwood Springs

Phone 161

Compliments of

THE  
*Glen*  
THEATER  
Grand Avenue



"Just Good Food"

DINNER  
BELL

CAFE AND FOUNTAIN

820 Grand Ave.

Glenwood Springs

Best Wishes of the

*Coca-Cola*

BOTTLING COMPANY

Glenwood Springs, Colorado



"Coke" is a registered trade-mark.

Compliments of

HUBBARDS  
MOBILE

Compliments of

FARNUM  
MORTUARY

Glenwood Springs

Compliments of  
MIKE OSIF

# M AND B

PHOTO

The Yampah Staff takes this opportunity to thank Mr. Osif for all the photography he has done for us gratis.



# WEST'S

CLEANERS

Wear Clean Clothes  
There's a Difference

Glenwood Springs

Doris Watts, Jennie Stephens,  
Letha Abel, Joann Reser, Jack  
Harrington, Dick Collings.

Compliments of

# HUBBARD'S

MARKET

Phil Griffith,  
Joann Reser



Everything for a Fisher



Jeanette Podbevsek, Nola Leighton

# Navi's

SPORTING GOODS

Skier - Hunter

817 Grand Ave.

Phone 280

C. Z.  
BUCKLES

Congratulations to the  
Senior Class of '56

Compliments of  
THE  
ANSWER

SHOP  
Cameras                      Projectors  
Film                              Gifts

816 Grand Ave.  
Glenwood Springs

*Buttercup*

BAKERY COMPANY

We Specialize  
in  
Special Orders

Phone 570

Compliments of

*Langley's*

BARBER SHOP

Glenwood Springs, Colorado

LARRY'S



Your Frozen Food Center

803 Cooper Ave.

Phone 154

Mr. Wilber Harrington, Mr. Larry Velasquez, A. Werking,  
J. Richmond, N. Leighton, J. L. Stull.

VADOR



CAVES

Compliments of  
**BERTHOD**  
MOTORS

Glenwood Springs  
Grand Ave.

Compliments of  
*Sever*  
JEWELRY

8th and Grand  
Phone 146

THE  
**PFAFF**  
SEWING CENTER  
MRS. R. BURNS

Glenwood Springs

Compliments of  
**LOG  
CABIN  
INN**  
Glenwood Springs

Phone 444-W  
**BOB'S**  
SPORTING GOODS

727 Grand Ave.

Glenwood Springs

Hunting and Fishing Information

**MACKEY SUPPLY COMPANY**

John Deere Tractors and  
Farm Machines  
DeLaval Cream Separators  
Homelite Chain Saws  
Hardware - Farm Supplies  
Purina Feeds  
North Glenwood  
Phone 236-W

Compliments of the  
**GARFIELD**  
COUNTY ABSTRACT CO.

CARLETON HUBBARD

and  
CARLETON HUBBARD, JR.

Congratulations  
**VALLEY**  
PAINT AND WALLPAPER

728 Cooper Ave.

Phone 675-W

Congratulations  
to the  
Senior Class

EMMA  
BOOROM

717 Grand Ave.  
Phone 195-W

EASTWOOD

SERVICE

Phillips "66" Products  
Continental Trailways

Phone 162  
North Glenwood Springs

WELDING SHOP

Expert Repairing on All  
Makes of Machinery

LES  
BAILLIE'S

Res. Phone 541-W  
Shop Phone 142-W

"We Deliver"

*Car-lu*

FLOWER SHOP

As Usual, the Unusual  
Artist Service  
Flowers - Gifts

Phone 275      Glenwood Springs

Compliments of

MCDONALD

SHOE SHOP

*The  
Thrift Shop*

Glenwood Springs  
Grand Ave.

Compliments of

WILSON'S

CLEANERS

Phone 247

210 7th Street

Congratulations  
Seniors

BERT  
AND  
CATHERINE

SAVAGE

716 Grand Ave.

Batteries  
Tires  
Accessories

LAKEES  
TEXACO

Glenwood Springs Phone 18



Sales - Service

**MOUNTAIN**  
ELECTRIC

Maytag Kelvinator  
All Types Installation

MR. BIDDLE MR. TURNER

Glenwood Springs Phone 462

*Bo-Mar*

JEWELRY

Crystal - Gifts - China  
MR. AND MRS. R. E. PEFFER  
Phyllis Bradshaw Ann Werking  
Glenwood Springs



Compliments of

**B-M**  
HARDWARE

Phone 226

Betsy Foote, Bernard Wyatt,  
Joann Cox

Glenwood Springs



# ALBERTA BEAUTY SHOP

Merle Norman Cosmetics

Phone 3

313-8th St.

# HOME SERVICE

MARKET

Free Delivery

809 Grand Ave.

Phone 10



## Compliments of HESTED'S STORE

Glenwood Springs

Janet Hargis

Ann Werking

Richard Gunter

Nola Leighton

# J. V. ROSE

MOTOR CO.

Chevrolet

Our Permanency--Your Security  
Your New Car Dealer for  
Over 33 Years

Glenwood Springs Phone 81

Jane L. Stull, Jeanette  
Podbevsek, Ann Werking,  
Elaine Rugar, J. Richmond.



Good Luck to the Senior Class  
The Friendly Store

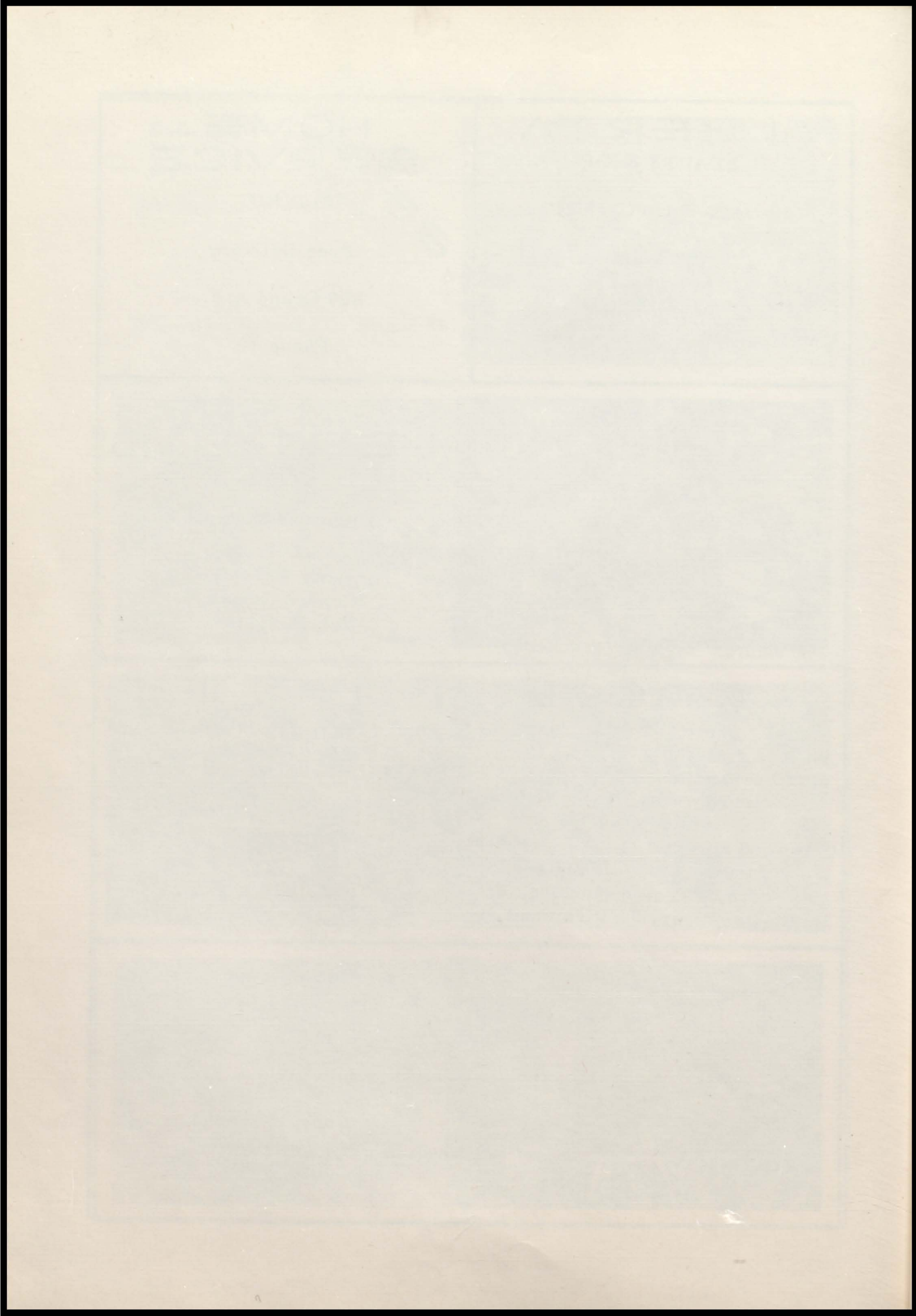
# GAMBLES

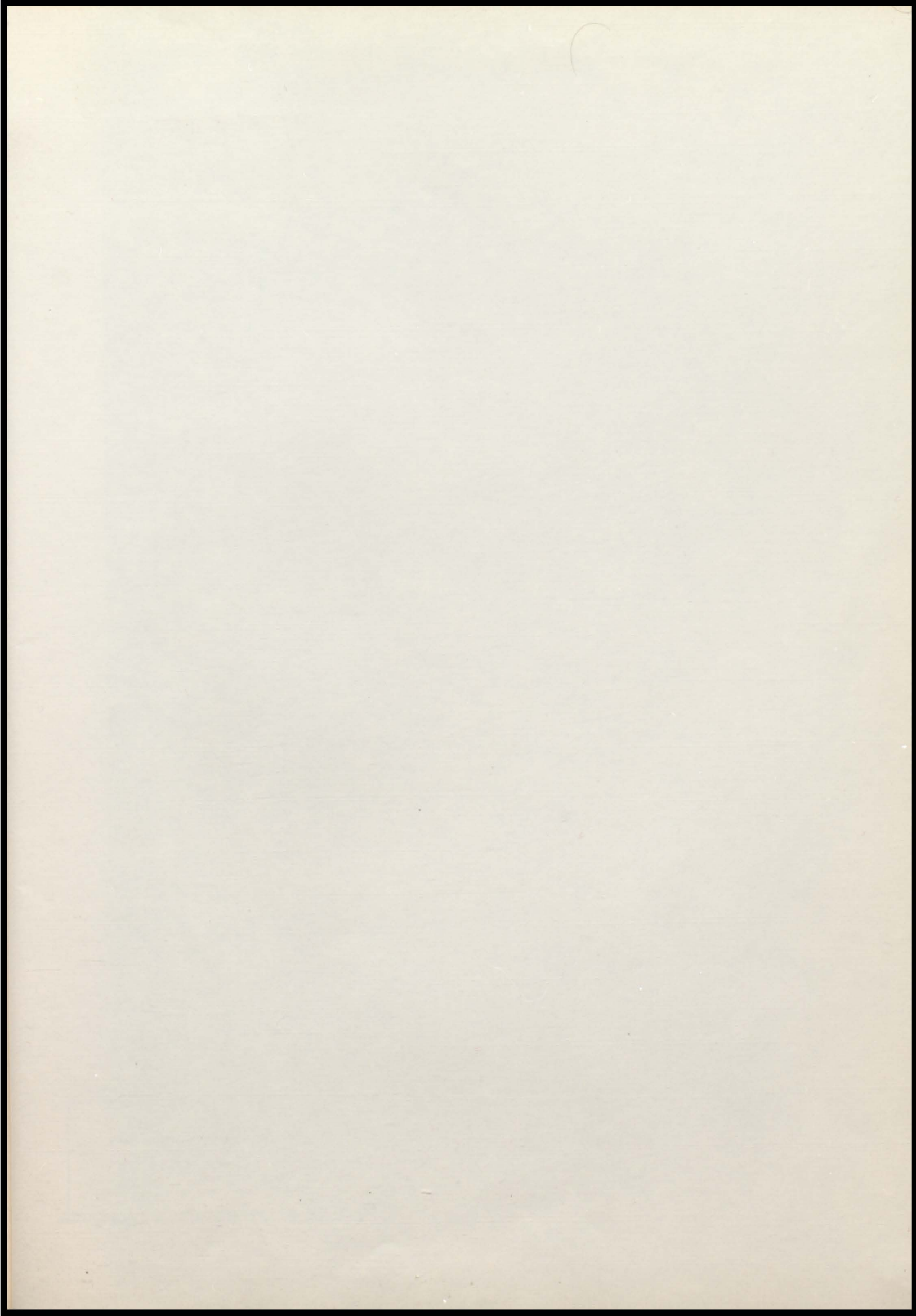
K. McINNIS - J. GEIGER

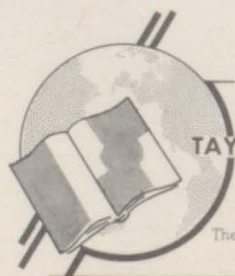
Judy Richmond

Dorothy Dever

Joan Reser







LITHOGRAPHED BY

**TAYLOR PUBLISHING CO.**

DALLAS • TEXAS

The Best Yearbooks are TAYLOR-MADE

