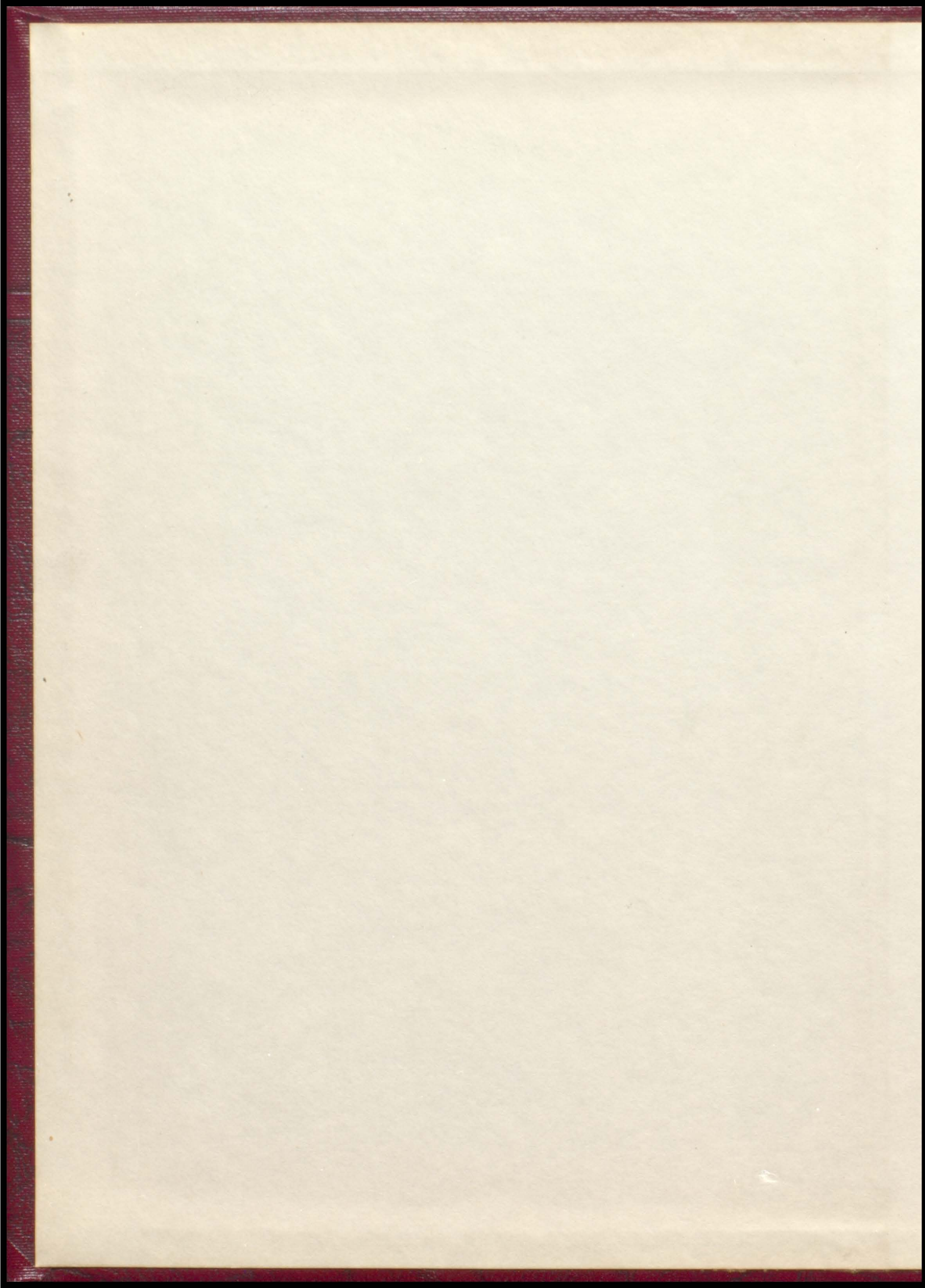
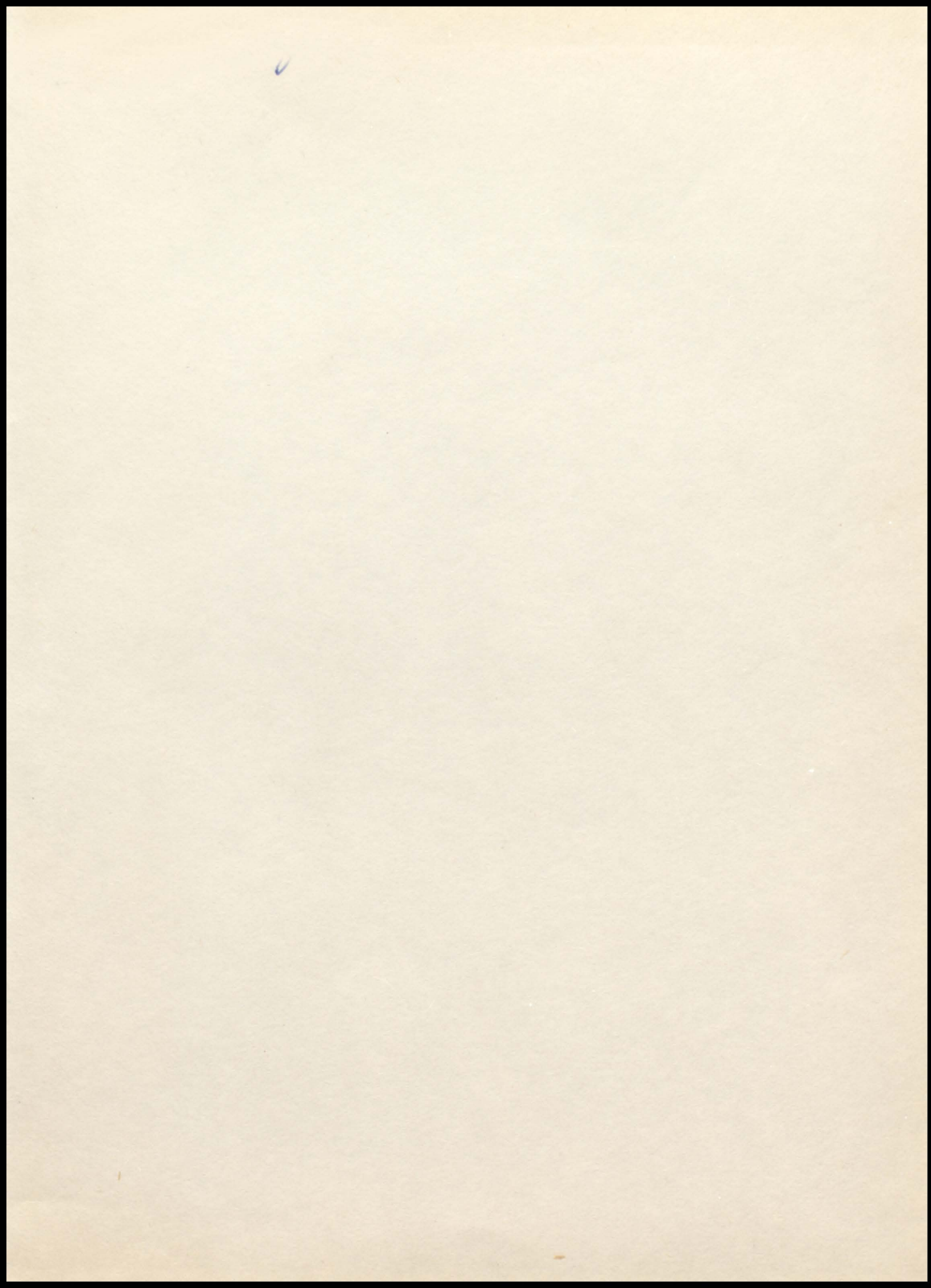
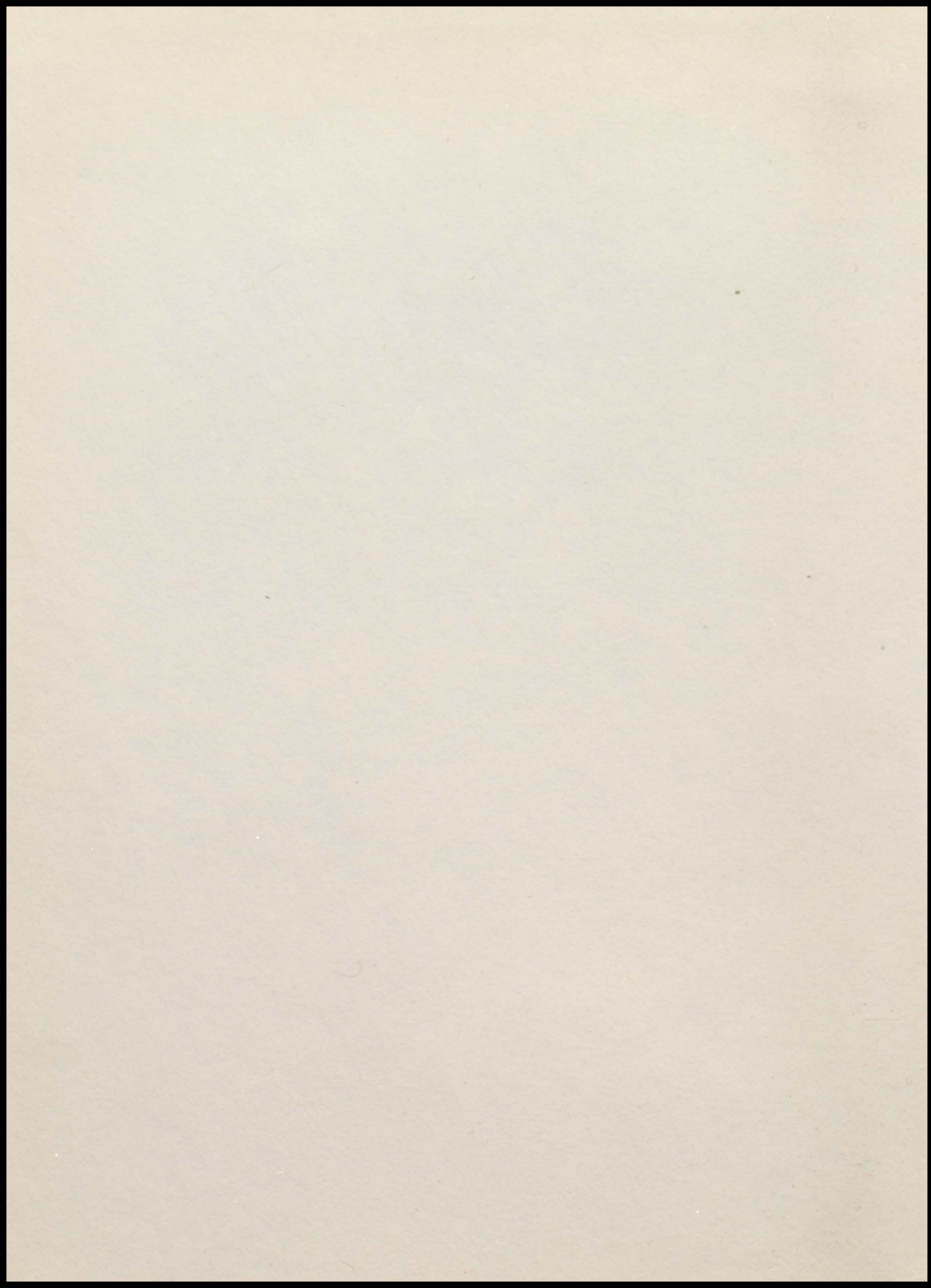


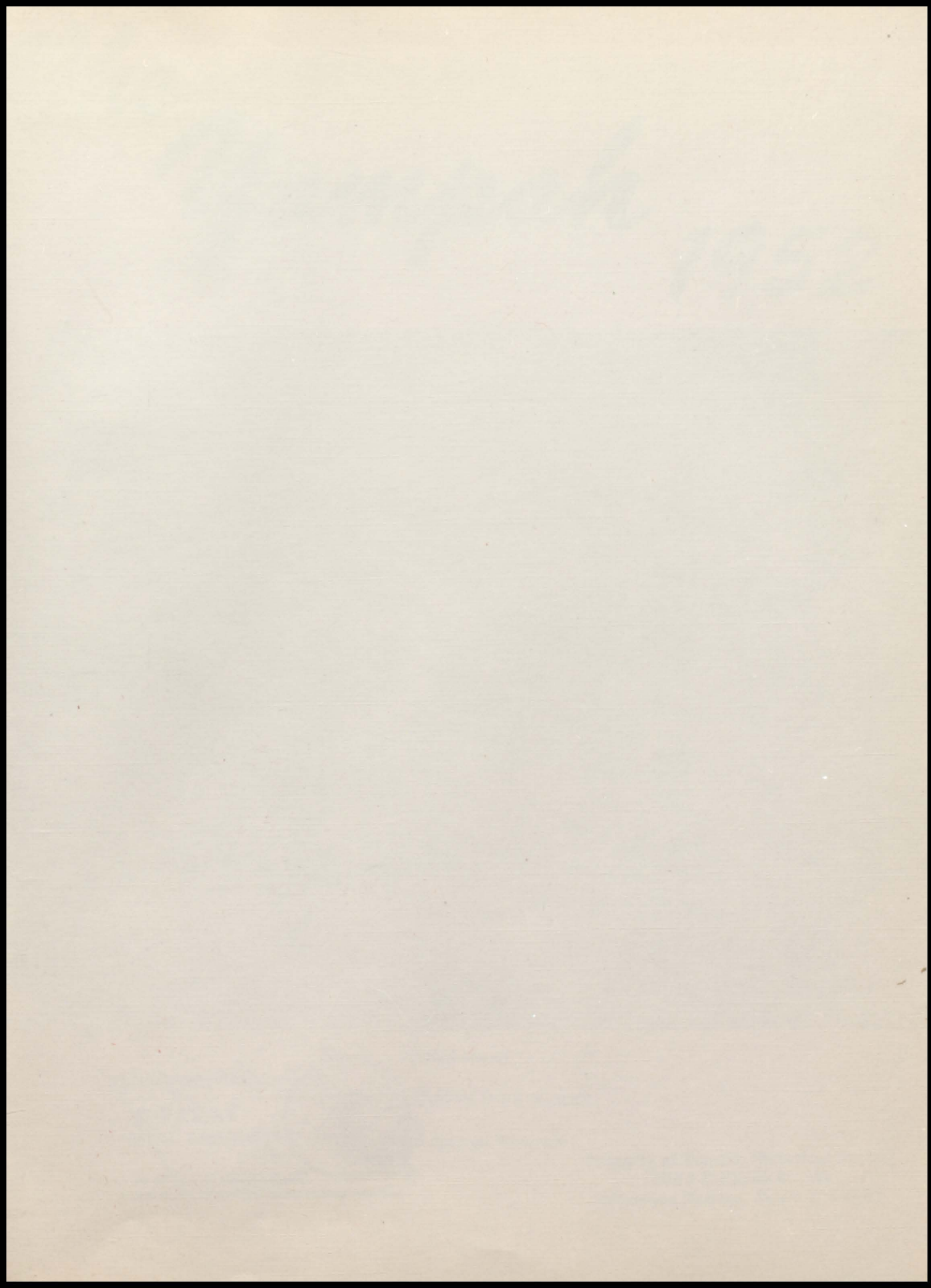
19 Yampah 52

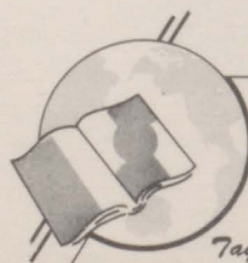












Lithographed by

TAYLOR

PUBLISHING COMPANY

DALLAS,

TEXAS

Taylor-made MEANS BETTER YEARBOOKS

The Yampah 1952



Yearbook of

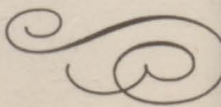
GARFIELD COUNTY HIGH SCHOOL

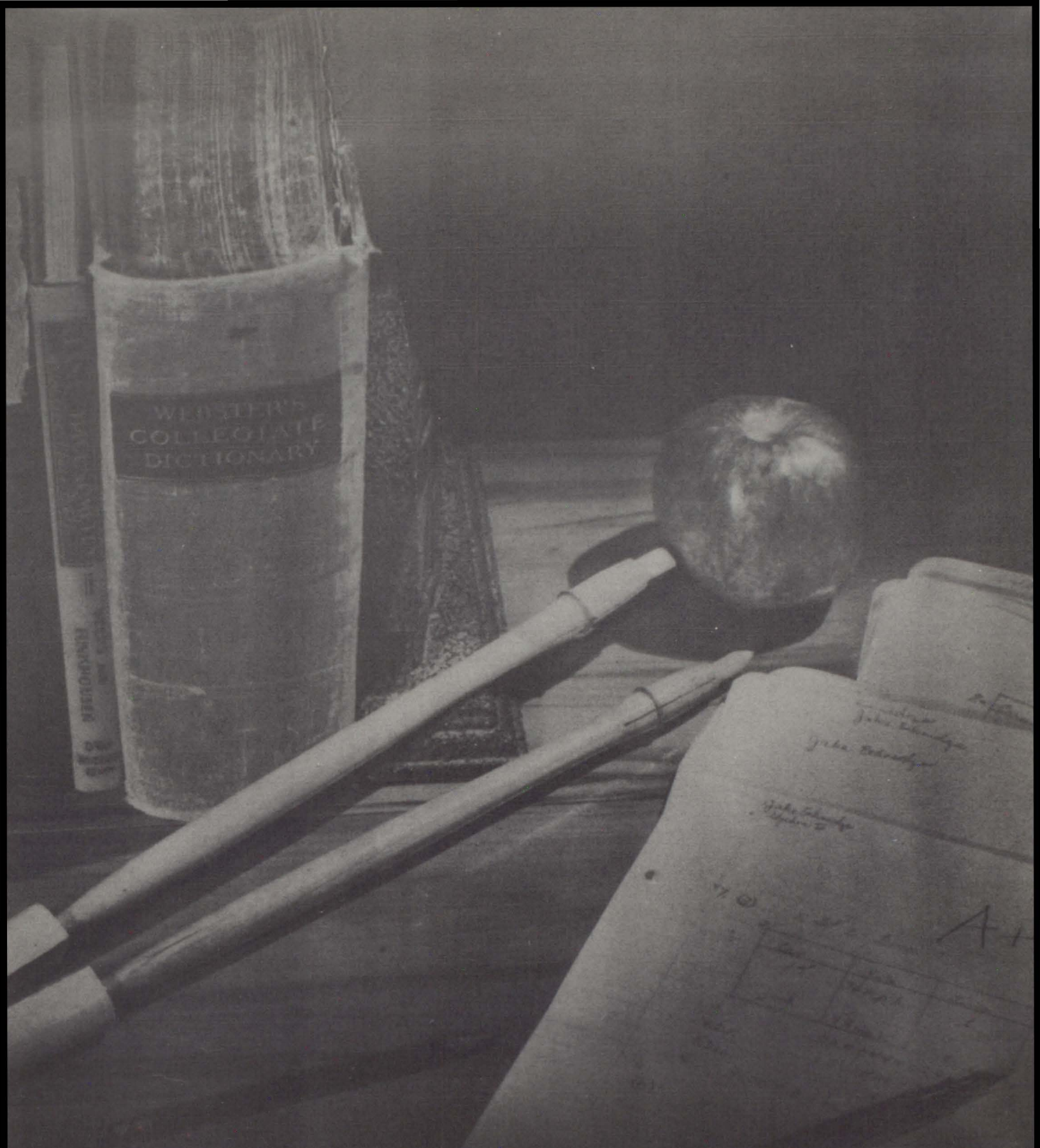
Glenwood Springs, Colorado

Volume XXVIX



To JOHN GUILD and VERNON DUFFY who gave themselves for us to
the making of an abiding peace.

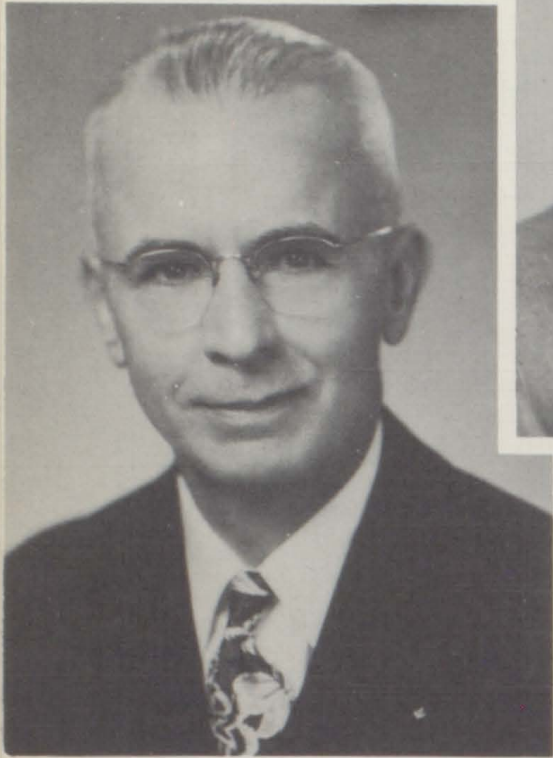




Administration

SCHOOL

BOARD



MR. W. SHARP
Principal of Schools



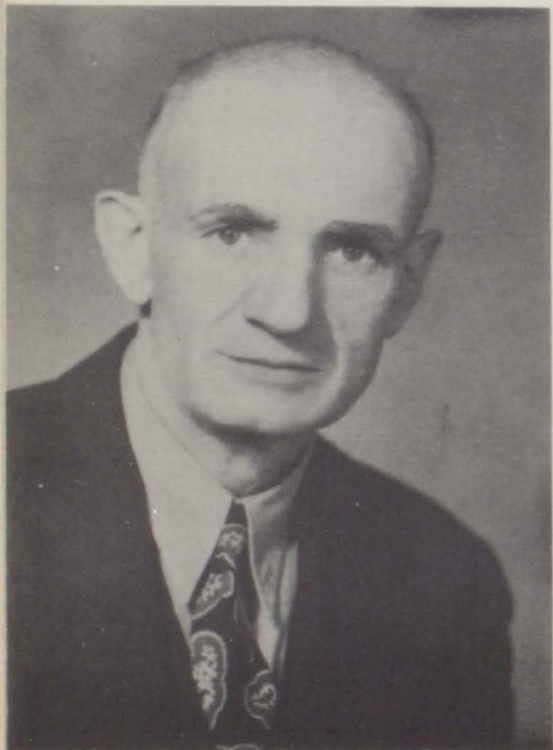
MR. H. J. IGO
Superintendent of Schools



MRS. ALMA HARRIS
County Superintendent



MR. CECIL HUNTLEY



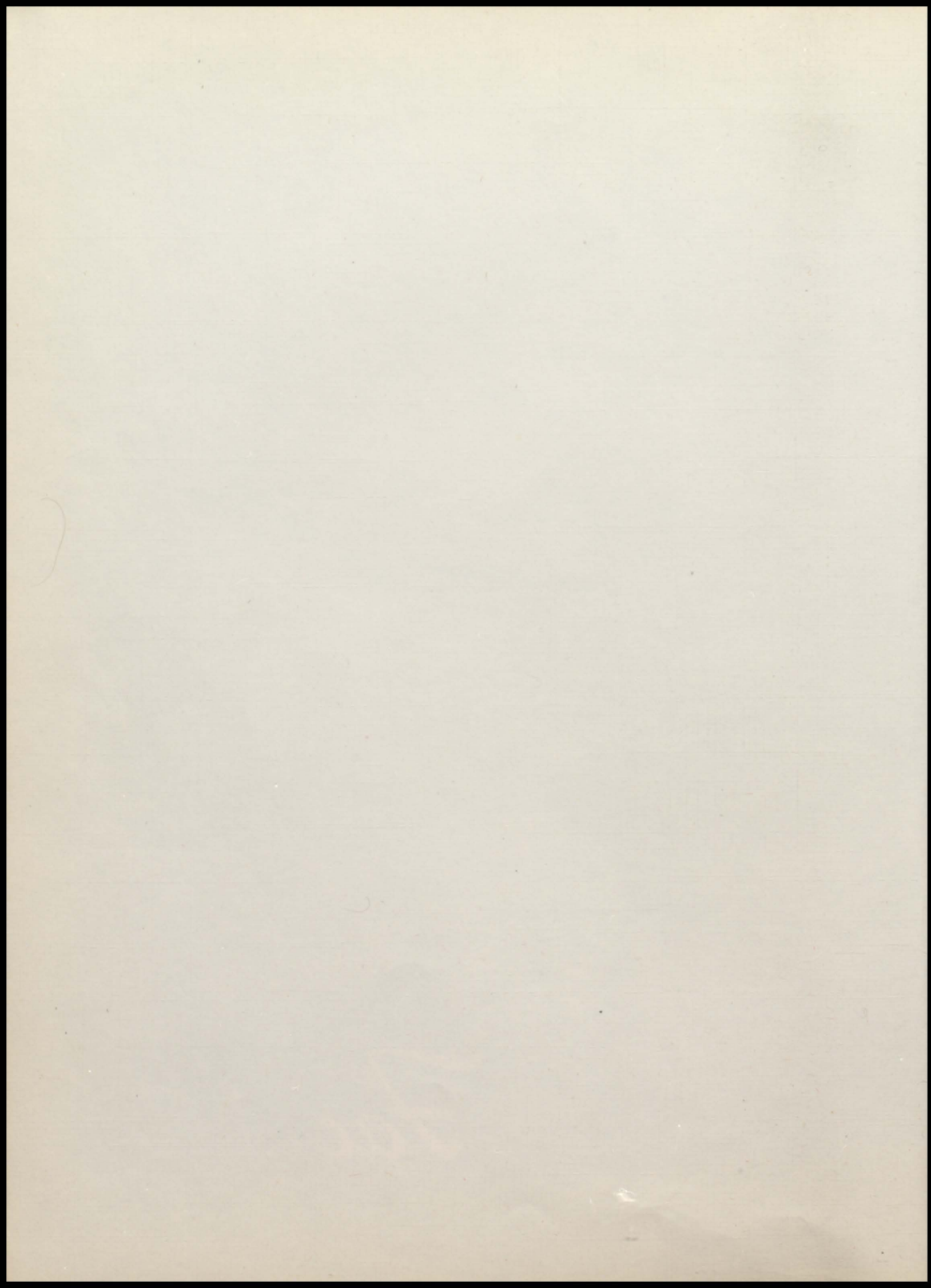
MR. DAVE DAVIES

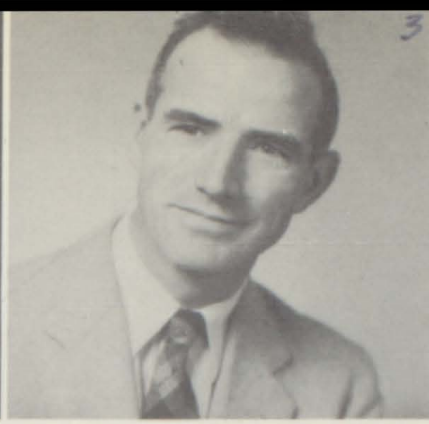
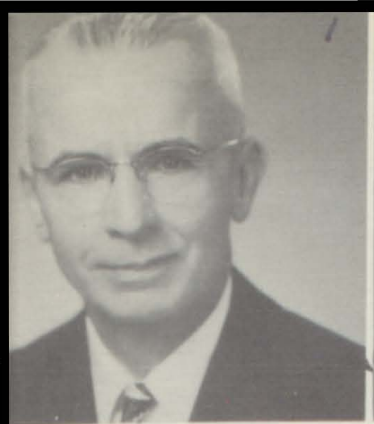


MR. CLIFF KIMMINAU



Faculty





MR. W. V. SHARP
Chemistry and Physics

MISS HELEN K. BOYD
Commercial

MR. ROGER P. GREEN
Mathematics

MRS. RADER
English, Speech, Hist.



MR. BAILLIE
Science and Shop

MRS. GRAVES
Home Economics

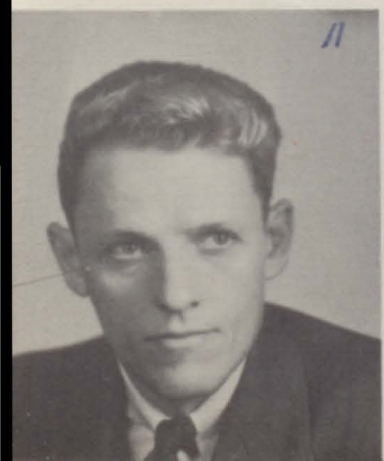
MR. BRAMBLE
Band



MRS. WILLIAM RILEY
Spanish and English

MR. NICK STUBLER
Sociology, History,
Physical Education

MISS PATRICIA GUADNOLA
Music Theory and Glee Club



MR. MAURICE BOSLEY
Mathematics, English

MRS. WAYNE NEIL
Study Hall

MR. LLOYD LEWIS
Driver's Training

MRS. G. VAN GAALLEN
Office

Reverse

No 9

No 7



NADRA BENEDECK

C
O

E
D
I
T
O
R
S



ANITA HUNTLEY

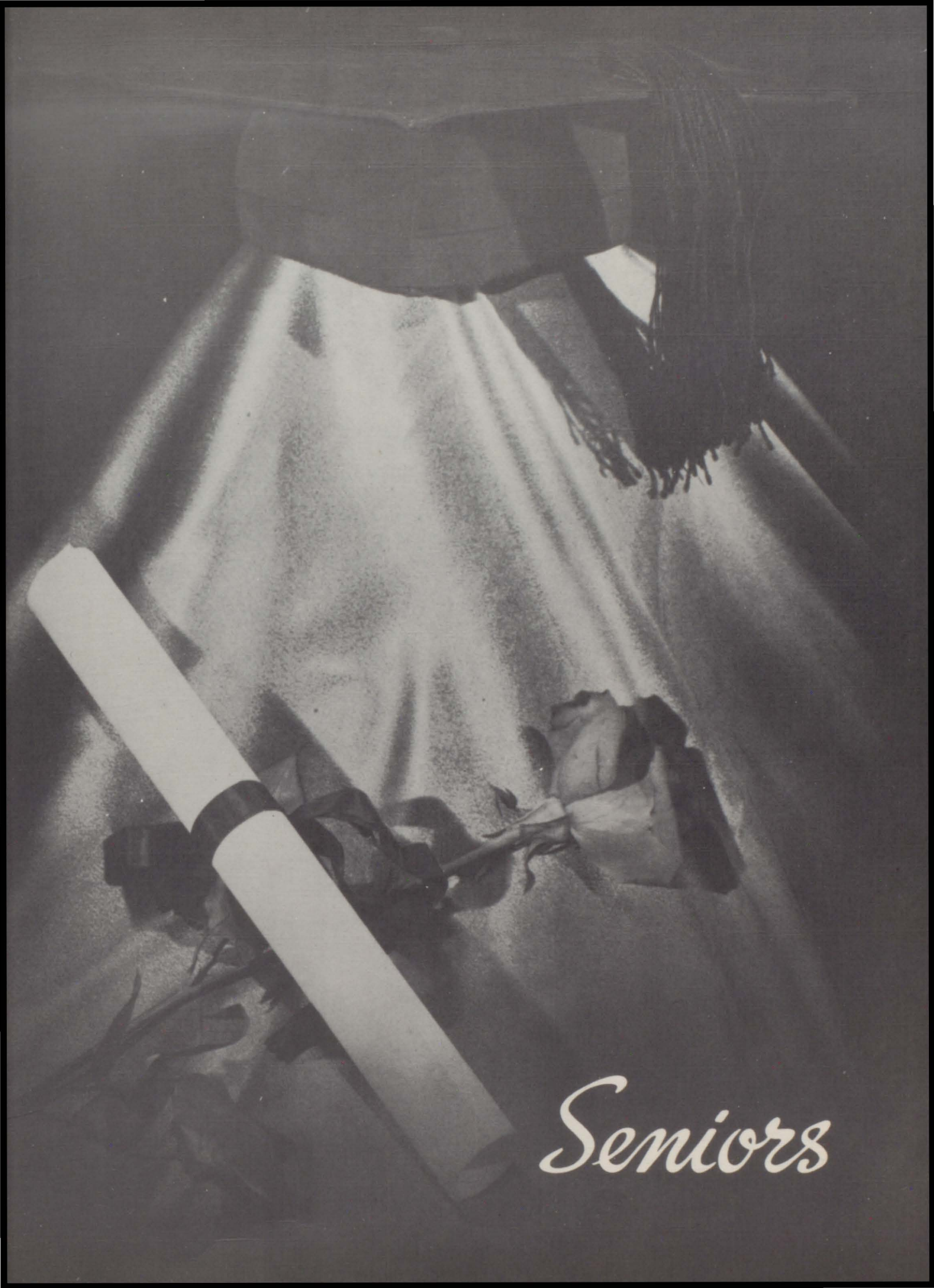


THE

STAFF

MR. SHARP - - - - - Photographer
 MRS. RILEY - - - - - Sponsor
 SALLY COLOHAN - - - - - Typist
 DAVE BROWN - - - - - Sports

JACKIE BUSBY - - - - - Calendar of Events
 JULIE MEREDITH - - - - - Senior Stars
 WESLEY HUTCHINGS - - - - - Snapshots
 JACQUE READ - - - - - Senior Stars and Activities



Seniors



Sponsor
MRS. WILLIAM RILEY



President-NORMAN ROSS; Vice President-NADRA BENEDECK;
Secretary-ROSE ANN LETEY; Treasurer -LA BETH SUMMERS.

LAVANIA ALLEN

Glee Club 1, 2, 3, 4; Operetta 1, 2, 3, 4; Sextette 4; Band 1, 2, 3, 4; Pep Club 1, 2, 3, 4; Interclass Sports 1, 2, 3, 4; FHA 2, 3, 4; FHA Vice President 4

BILLIE JEAN ANDERSON

Band 1, 2, 3; Dance Band 1, 2; Twirler 3; Glee Club 1, 2, 3; Publicity Club 3; FHA 1; Student council Representative 1, 2, 3.

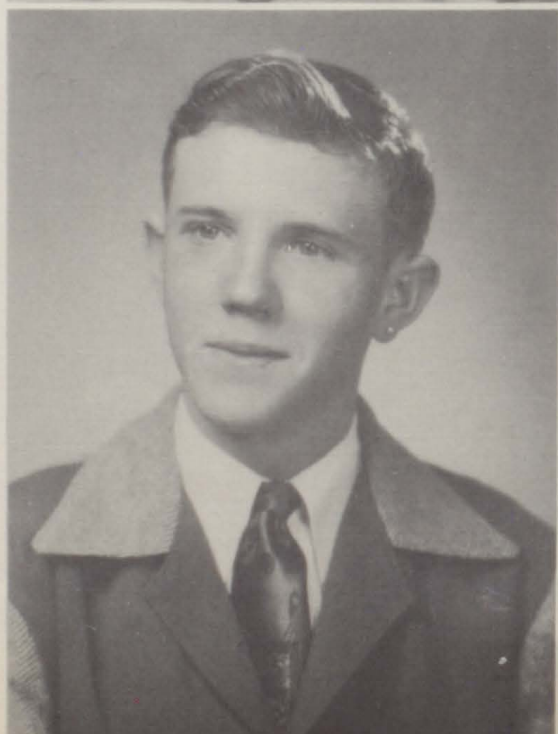


FRANK ARBANEY

Band 1, 2, 3, 4; Interclass Sports 2, 3, 4; Junior League 2, 3, 4; Football 3, 4; Boxing Club 1; Dramatics Club 2, 3; Class Play 3, 4.

FRANCES BAILLIE

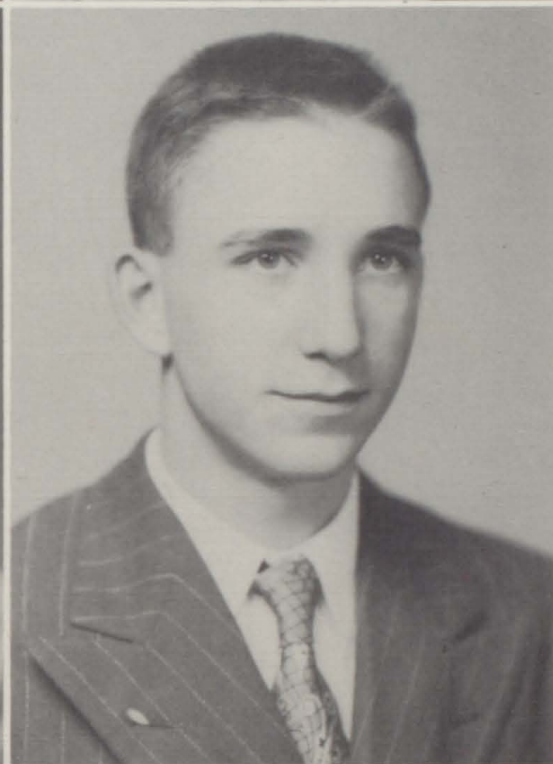
Glee Club 1, 2, 3; Operetta 1, 2, 3; Pep Club 1, 2, 3, 4; Dramatics Club 1; Publicity Club 2, 3, 4; Yampah Staff 2, 3; Canteen 2, 3, 4; Canteen President 3; Class Secretary 2; Class Play 3; Scholastic Team 1, 2; Interclass Basketball 1; Girls' State 3.





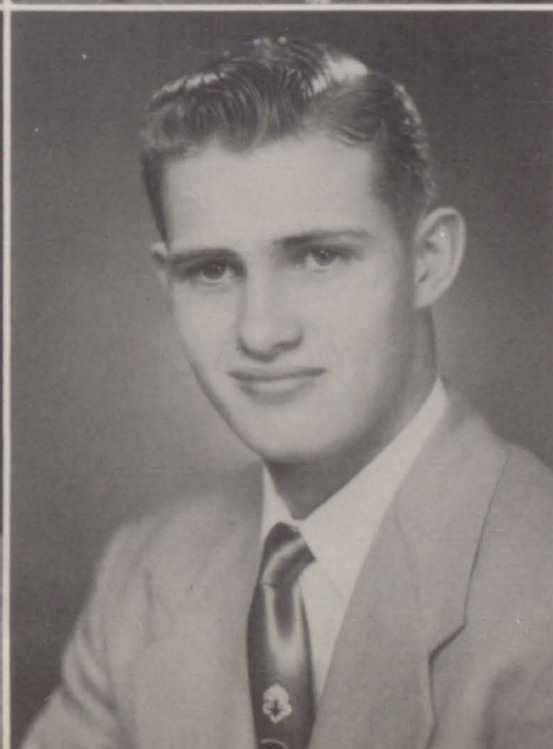
NADRA BENEDECK
 Pep Club 1, 2, 3, 4; Cheerleader 2, 3, 4; Glee Club 1, 2, 3, 4; Operetta 1, 2, 3, 4; Sextette 1, 2, 3, 4; Trio 1, 2; Music Team 1, 2, 3, 4; Band 4; Band Vice President 4; Publicity Club-1, 2, 3, 4; Yampah Staff 1, 2, 3, 4; Co-editor Yampah 4; Class President 1; Student Council Secretary 2; Glee Club Secretary 2; Glee Club President 3, 4; Secretary Canteen 3; Kid s'Day Representative 2, 3, 4; Vice President Class 4; Interclass Sports 1, 2, 3, 4; Canteen 1, 2, 3, 4; Class Play 3, 4.

BETTY BERTHOD
 Colbran 1, 2; FHA 3, 4; FHA News Reporter 3; Pep Club 3, 4.



DOROTHY BINKLEY
 Glee Club, 1, 2, 3, 4; Operetta 1, 2, 3, 4; Band 1, 2; Pep Club 1, 2, 3, 4; FHA 2, 3, 4; FHA Treasurer 2, 3; FHA President 4; Snow Queen 4; Interclass Basketball 2, 3, 4; Wool Growers 3, 4.

LEONARD BLANC
 Leadville 1, 2, 3; Band 4.



JUDY BLOTIAUX
 Glee Club 1, 2, 4; Operetta 1, 2, 4; Music Team 1; Dramatics Club 1, 2, 3; Pep Club 1, 3; FHA Club 3; Class Play 3, 4; Interclass Sports 1.

DAVID BROWN
 Armel, Colo. 2; Interclass Sports 1, 3, 4; Student Council Representative 3, 4; Secretary-Treasurer Class Armel High 2; Football 1, 3, 4; Basketball 1, 3, 4.

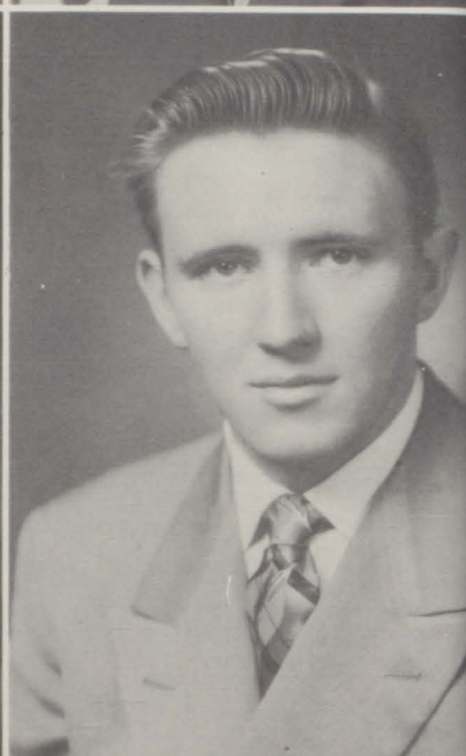
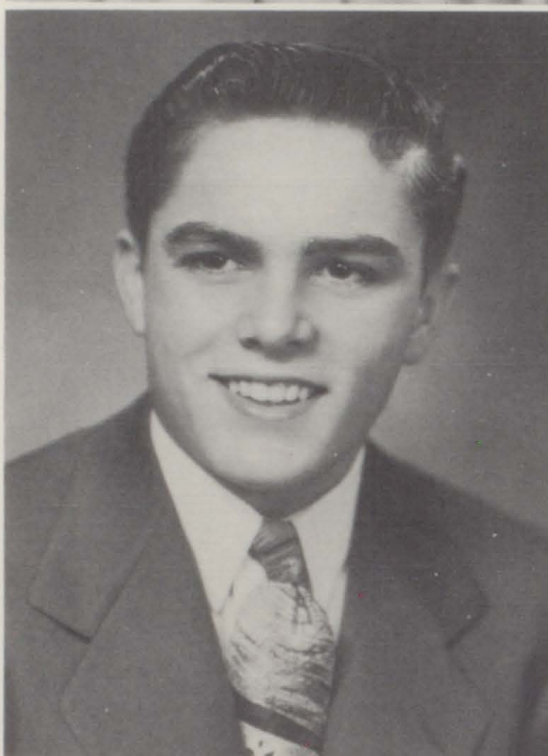
JOAN BURGER

Glee Club 1, 2, 3, 4; Operetta 1, 2, 3, 4; Pep Club 1, 2, 3, 4; Dramatics Club 1; FHA Secretary 3; FHA Corresponding Secretary 4; Interclass Sports 1, 2, 3, 4; Wool Growers 4.



ROBERT COLEMAN

Glee Club 1, 2, 3; Band 1, 2, 3, 4; Music Team 1, 2, 3; Interclass Sports 1, 2; Stage Manager Play 4.



BILL COOK

Mathematics Club 2; Band 1, 2, 3, 4; Interclass Sports 1, 2, 3, 4; Junior League 2, 3, 4; Dramatics Club 3; Class Play Stage Manager 4.

NORMAN COOK

Glee Club 1, 2; Operetta 2; Publicity Club 3; Interclass Sports 1, 2, 3; Football 1, 2; Basketball 1, 2.



IRENE DRAKE

Glee Club 1, 2, 3; Operetta 1, 2, 3; Dramatics Club 1, 2; Pep Club 1, 2, 3; FHA 3; Wool Growers 3; Interclass Sports 1, 2, 3.

BETTY FENDER

Carbondale 1, 2, 3; National Kids Day 4; Wool Growers 4.



GERTRUDE GARDNER
Pep Club 1, 2, 3, 4; Dramatics Club 1, 2; Archery Club 3; Scholastic Team 2; Wool Growers 3, 4, Class President 3; Interclass Sports 1, 2, 3.

FRANK GILMORE
Football 4; Basketball 2, 4; Interclass sports 1, 2, 3, 4; Athletics Club 1, 2, 3.



KENNETH HUBBARD
Glee Club 1, 2, 3, 4; Operetta 1, 2, 3, 4; Sextette 1, 2, 3; Band 1, 2, 3, 4; Music Team 1, 2, 3, 4; Dance Band 3, 4; Scholastic Team 1, 2; G Club 3, 4; Publicity Club 4; Interclass Sports 1, 2, 3, 4; National Kid s' Day 2, 3; Class Play 3, 4; Boy s' State 3; Junior League 1, 2, 3, 4; Student Council Treasurer 1; Student Council Representative 2; Student Council Vice President 3; Student Council President 4; Vice President Band 2; Band President 3, 4; Glee Club President 4; Treasurer Canteen 2, 3; Glee Club Treasurer 2; Football 1, 2, 3, 4; Movie Projector operator 3, 4.

ANITA HUNTLEY
Glee Club 1, 2, 3, 4; Operetta 1, 2, 3, 4; Pep Club 1, 2, 3, 4; Dramatics Club 1; Canteen 1, 2, 3, 4; Publicity Club 2, 3, 4; Yampah Staff 2, 3, 4; Co-Editor Yampah 4; Scholastic Team 1; Class Play 3, 4; Girl s' State 3; Wool Growers 4; Treasurer Class 1; Glee Club Treasurer 2; Glee Club Vice President 4.



WESLEY HUTCHINGS
Band 1, 2, 3, 4; Dramatics Club 2; Aeronautics Club 3; Science Club 1, 3; Interclass Sports 1; Class Play Manager 3.

IDA JAMMERON
Dramatics Club 1, 2; Interclass Sports 1; Pep Club 3, 4; Athletic Club 2; Class Play 4; Wool Growers 3.

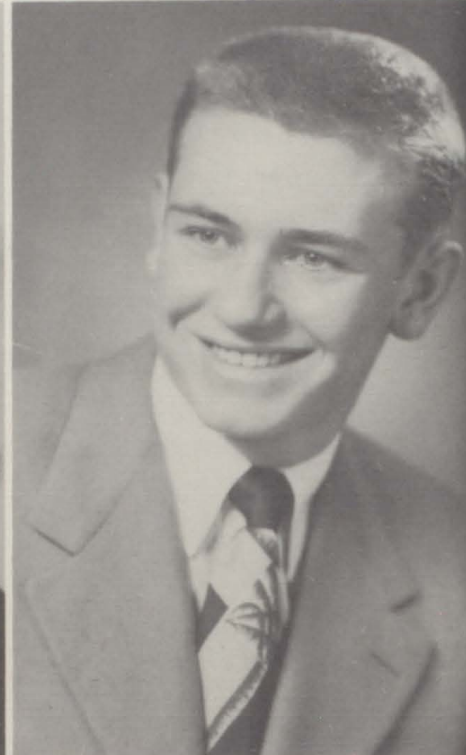
ROSE ANN LETEY

Glee Club 1, 2, 3, 4; Operetta 1, 2, 3, 4; Dramatics Club 1; Pep Club 1, 2, 3, 4; Publicity Club 2; Athletic Club 3; Interclass Basketball 3; Girl s' State 3; FHA 4; Wool Growers 4; Class Treas. 2; Class Sec. 4; Pep Club Treas. 4.



DONA RUTH LOUGH

Glee Club 1, 2, 4; Operetta 1, 2, 4; Band 1, 2, 3, 4; Twirler 4; Pep Club 1, 2, 3, 4; Publicity Club 2; Archeology Club 1; Science Club 3; Interclass Sports 1, 2.



THELMA MARSH

Montrose 1, 2, 3; Wool Growers 4.

DICK MARX

Aeronautics 1; Interclass Sports 1, 2, 3, 4; Archeology Club 2; Athletic Club 3; Class Play 3; G Club 3, 4; Publicity Club 4; Football 2, 3, 4; Basketball 2, 3, 4; Class Secretary 3.

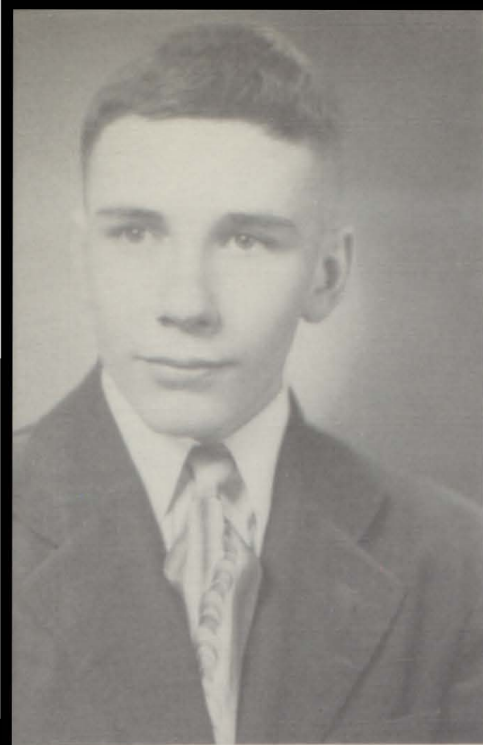


BETTY McCLURE

Littleton, Colo. 1, 2; Dramatic Club 3; Pep Club 4; Wool Growers 4.

PAUL NIESLANIK

Boxing Club 1; Interclass Sports 1, 2, 3, 4; Athletic Club 2, 3; Junior League 2, 3, 4; Class Play 3; Class Play Stage Crew 4.



JAMES NUTTING

Athletic Club 1, 2, 3; Interclass Sports 1, 2, 3, 4; Boys' State 3; Football 1, 2, 3, 4; Basketball 1, 2, 3, 4.



DOROTHY PAINE

Pep Club 1, 2, 3, 4; Dramatics Club 1; Canteen Committee 1, 2, 3, 4; Canteen Treas. 3, 4; Interclass Basketball 1; FHA 2, 3, 4; FHA Vice Pres. 2; FHA Pres. 3; State FHA Historian 3; Prom Queen 3; Girls State 3.



JACQUELINE READ

Band 1, 2, 3, 4; Dance Band 1, 2; Pep Band 3, 4; Pep Club 1, 2, 4; Dramatics Club 1; FHA Club 2; Publicity Club 3, 4; Yampah Staff 4; Student Manager Class Play 4; Class Vice Pres. 3.



VIRGINIA ROOT

Glee Club 1; Operetta 1; Pep Club 1, 2, 3, 4; Dramatics Club 1, 2; Interclass Sports 1; Athletic Club 3; Class Play 3; Wool Growers 3, 4.



BILLIE ROGERS

Glee Club 1, 2, 3; Operetta 1, 2, 3; Pep Club 1, 2, 3; Study Club 1; FHA Club 2; Sextette 2, 3; Music Team 2, 3; Dramatics Club 3; Red Cross Representative 2.



NORMAN ROSS

Glee Club 2, 3; Operetta 2; Interclass Sports 2, 3, 4; G Club 2, 3, 4; Class Play 3, 4; Kids Day 2, 3; Publicity Club 4; Class Treas. 3; Class Pres. 4; Football 2, 3, 4; Basketball 2, 3, 4; All-Conference Football 4.

DONNA LOU SADLER

Glee Club 1, 2, 3, 4; Operetta 1, 2, 3, 4; Pep Club 1, 2, 3, 4; Dramatics Club 1; Publicity Club 2, 3, 4; Yam-pah Staff 2, 3; Class Play 4; Inter-class Sports 2, 3, 4; Class Sec. 1.

STRAT SAUNDERS

Glee Club 1, 2, 3, 4; Operetta 1, 2, 3, 4; Band 1, 2, 3, 4; Pep Band 3; Music Team 2, 3, 4; Class Play 3, 4; Publicity Club 4; Movie Projector Operator 3, 4; Interclass Sports 2, 4; Football 4; Vice Pres. Glee Club 4.



MARY LOU SAVAGE

Hayden 1, 2; FHA 3, 4; Pep Club 3, 4; FHA Songleader 3.

LA BETH SUMMERS

Glee Club 1, 3, 4; Operetta 1, 3, 4; Dramatics Club 1; Pep Club 1, 2, 3, 4; FHA 2, 3, 4; Interclass Sports 1, 2, 3, 4; FHA Reporter 2; FHA Corresponding Sec. 3; FHA Treas. 4; Class Treas. 4; Wool Growers 4.



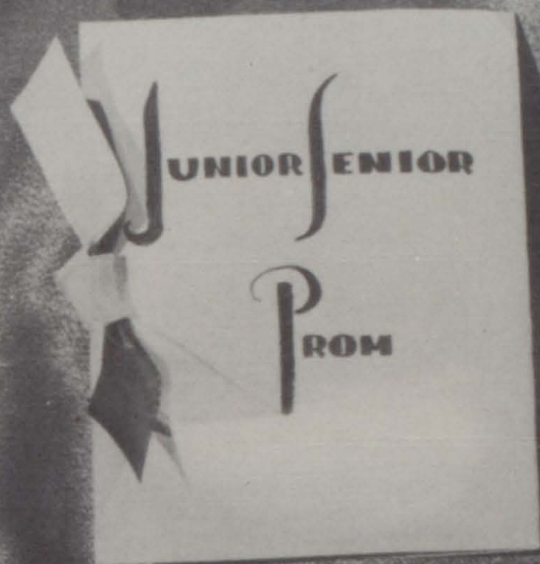
DONALD VAN HOOSE

Glee Club 1; Dramatics Club 2, 3; Interclass Sports 2, 3; Junior League 2, 3; Class Play 4; Football 3, 4; Basketball 4.

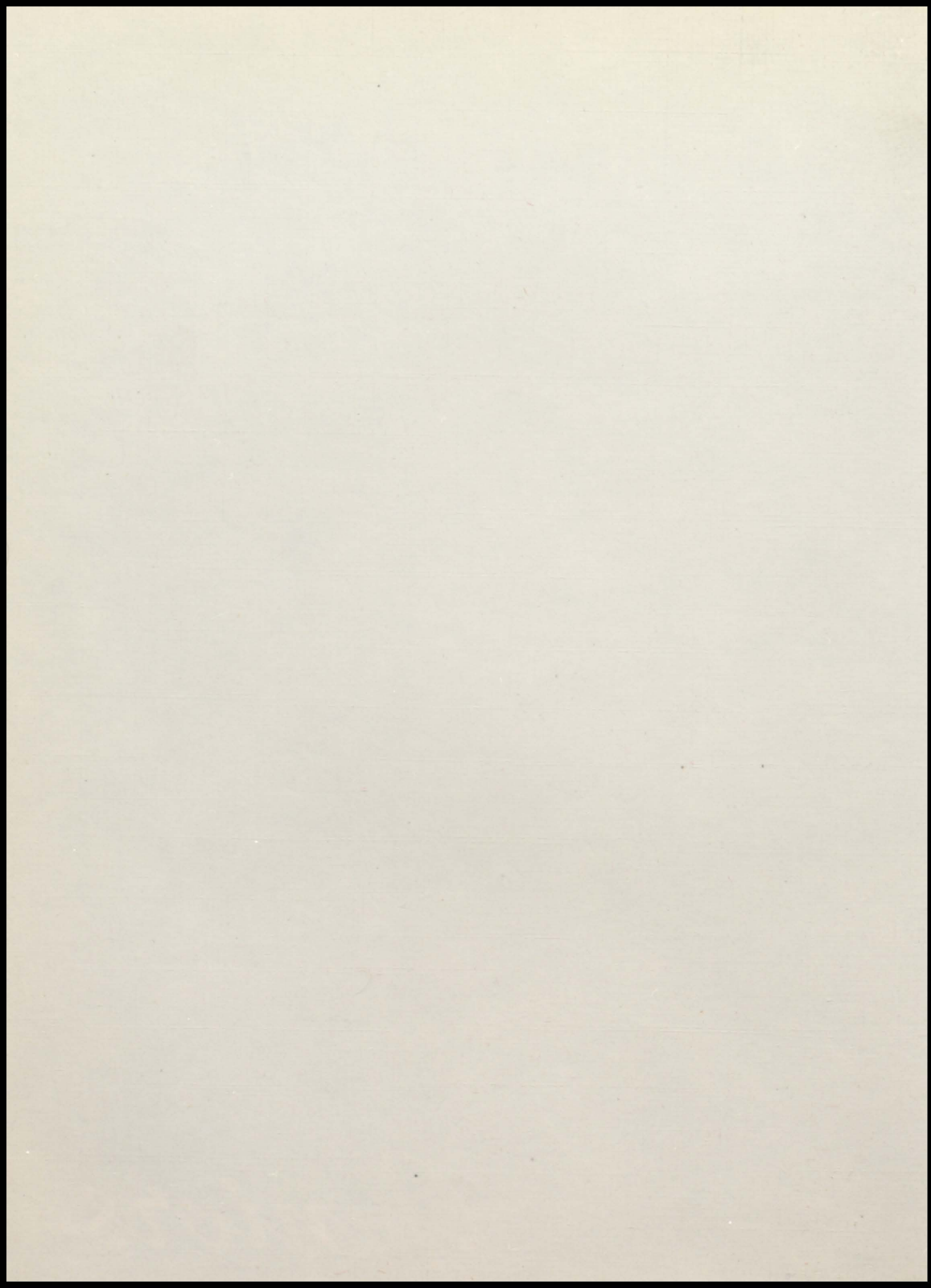
EDWARD VAN OVER

Athletic Club 1, 2, 3; Interclass Sports 3, 4; Football 2, 4; Junior League 1, 2, 3, 4.





Juniors





President	-----	SHIRLEY BAKER
Vice President	-----	DIANE JONES
Secretary	-----	ELEANOR GRAVES
Treasurer	-----	REGINA BROWN



JUNIOR

SPONSOR

JUNIOR

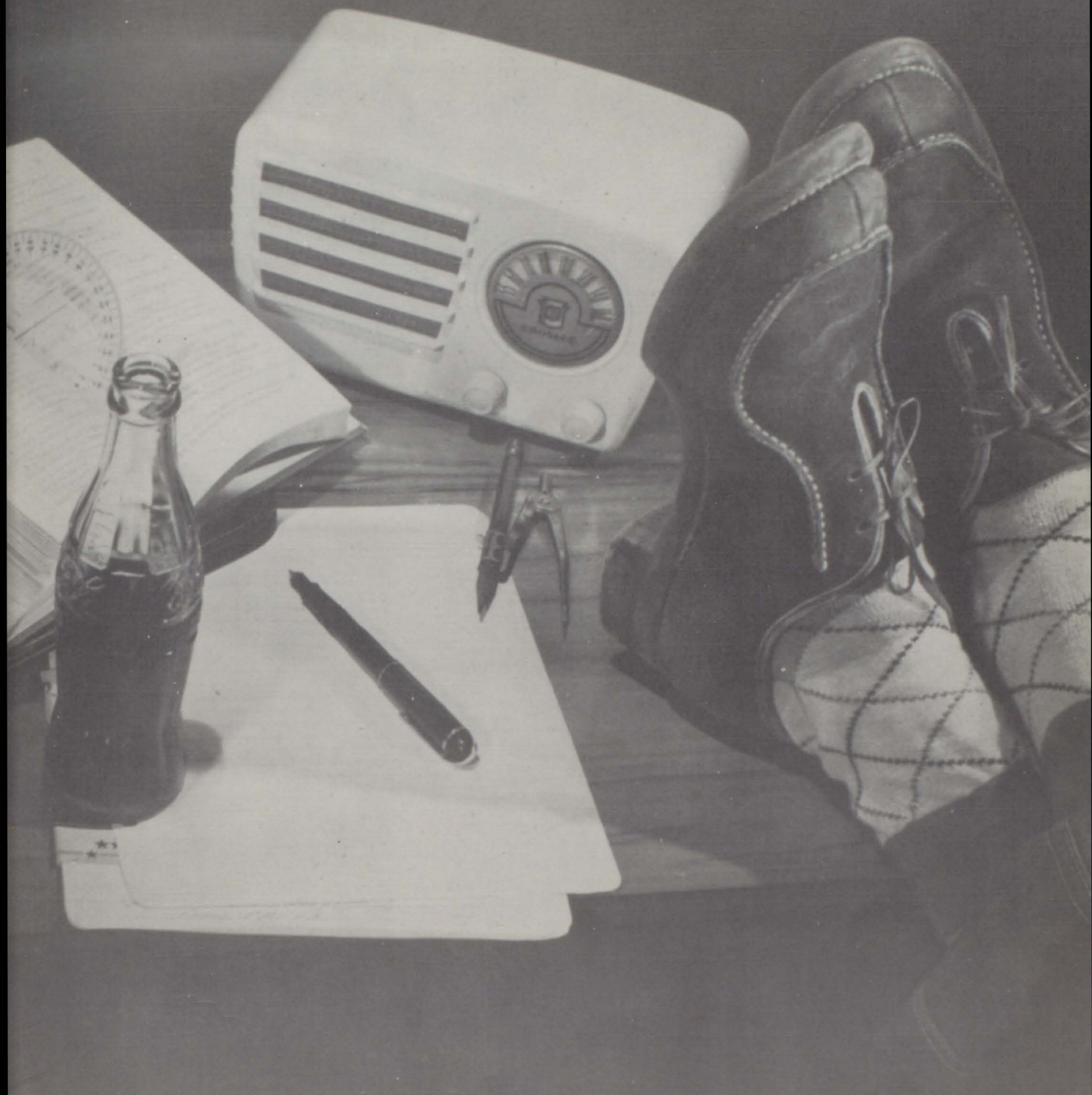


First row-J. Hubbard, J. Meredith, S. Colohan, M. Belluchie, S. Alcorn, J. Busby; Second row-D. Jones, B. Anderson, S. Bond, G. Jones, V. Neiwoehner; Third row-S. Schinkel, J. Betz, R. Brown, L. Metcalf; Fourth row-E. Graves, S. Baker, P. Mann.



CLASS

First row-D. Jenkinson, B. Brown, D. Allan, T. Shelton, D. Harris, B. Coleman; Second row-G. Overlin, F. Simpson, D. Nutting, B. Barnes, H. Montover, R. Summers. Third row-R. Simillion, M. Britton, J. Turner, J. Fish; Fourth row-M. Hotz, D. Gilmore.



Sophomores

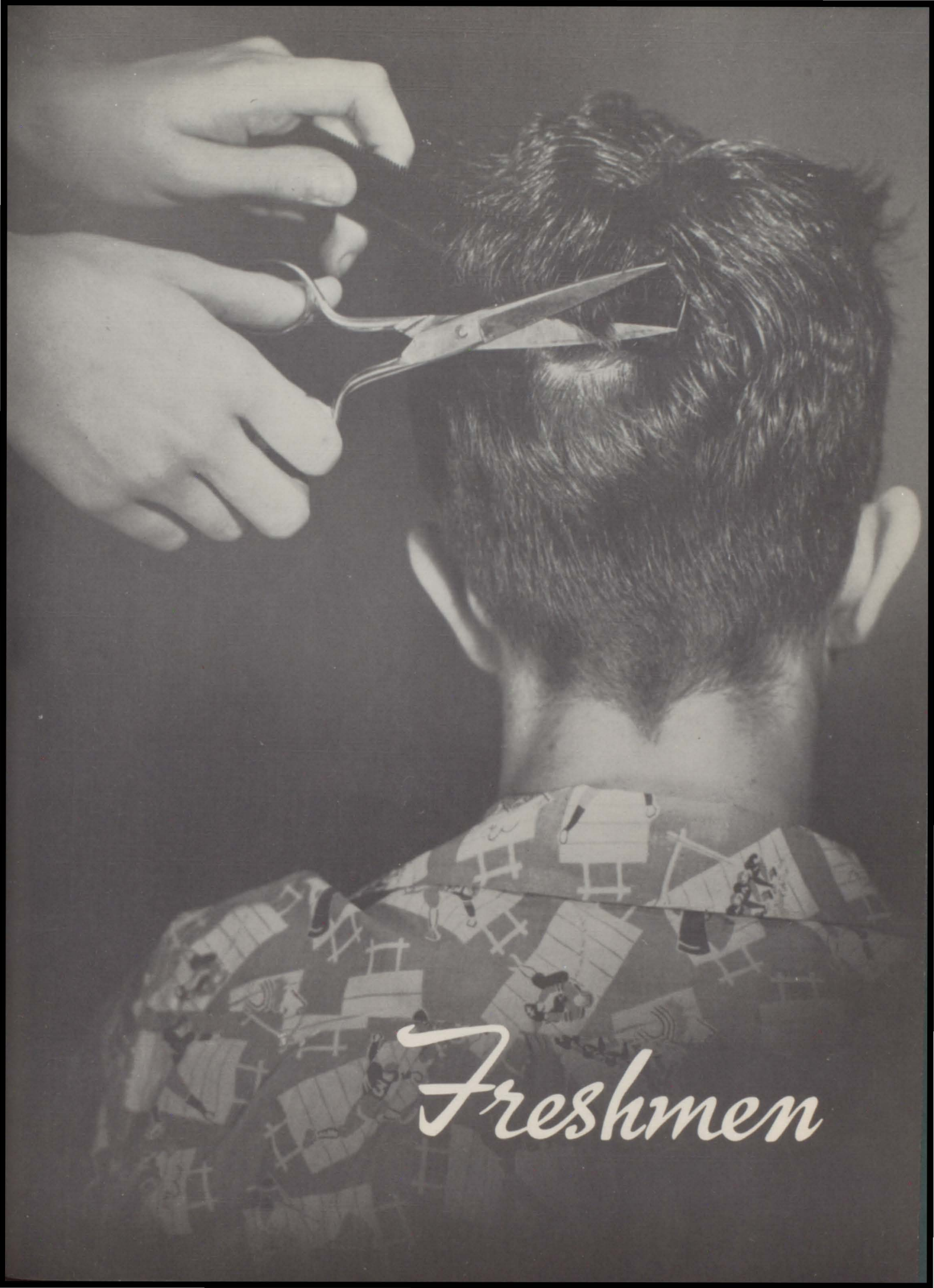
President-Beverly Ryan, Vice President-
Elmer Arbaney, Secretary-Drusilla Datema,
Treasurer-Jon Gill.



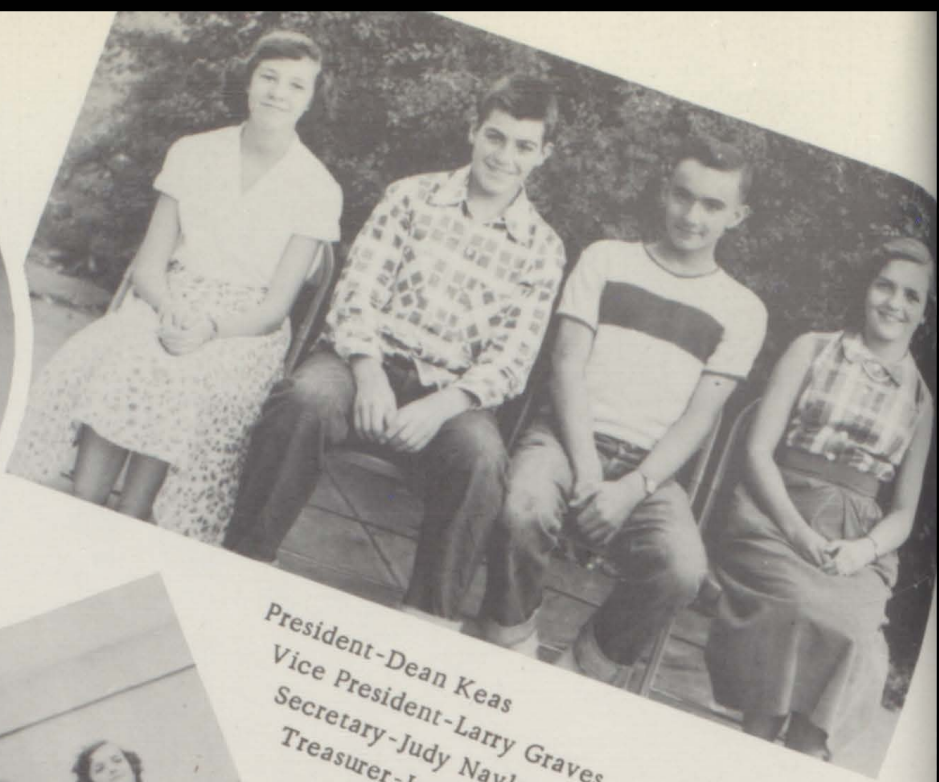
First row-B. Bowen, E. Arbaney, L. Caster, C. Ross, R. Garnett, J. Toniolli; Second row-D. Ford, K. Butler, D. Werking, B. Bunn, J. Gill, B. Neislanik, W. Schroder; Third row-W. Bershenyi, L. Murdock, G. Elliot, B. Jones, C. Olson, J. Clemens, Fourth row-J. Neilson, J. Burger, D. Reinhard, B. Kyner.



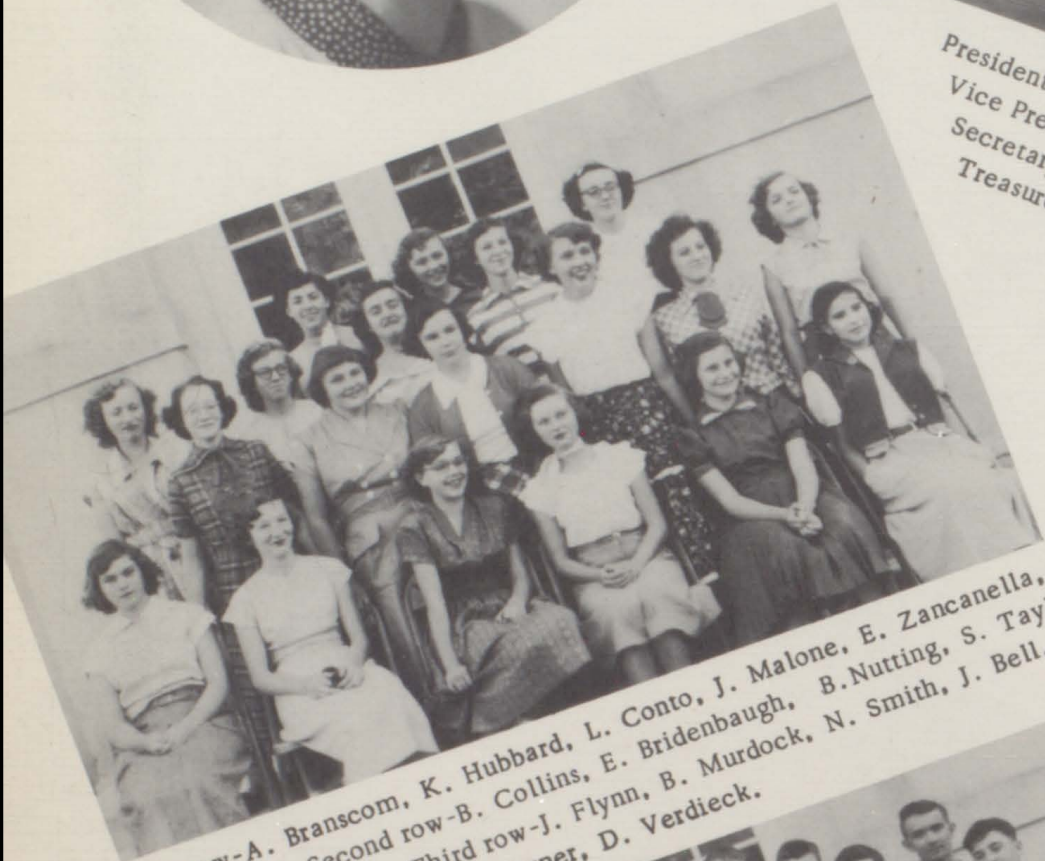
First row-B. Switzer, P. Simillion, N. Cox, D. Datema, L. Bukowich, B. Artaz; Second row-V. Cooney, L. Holmes, M. Bradshaw, M. Bradley, B. Ryan; Third row-S. Engstrom, P. Jump, R. Blewett, N. Mann, L. Cossins; Fourth row-M. Barz, L. Dickerson, E. Robertson, M. Hotz.



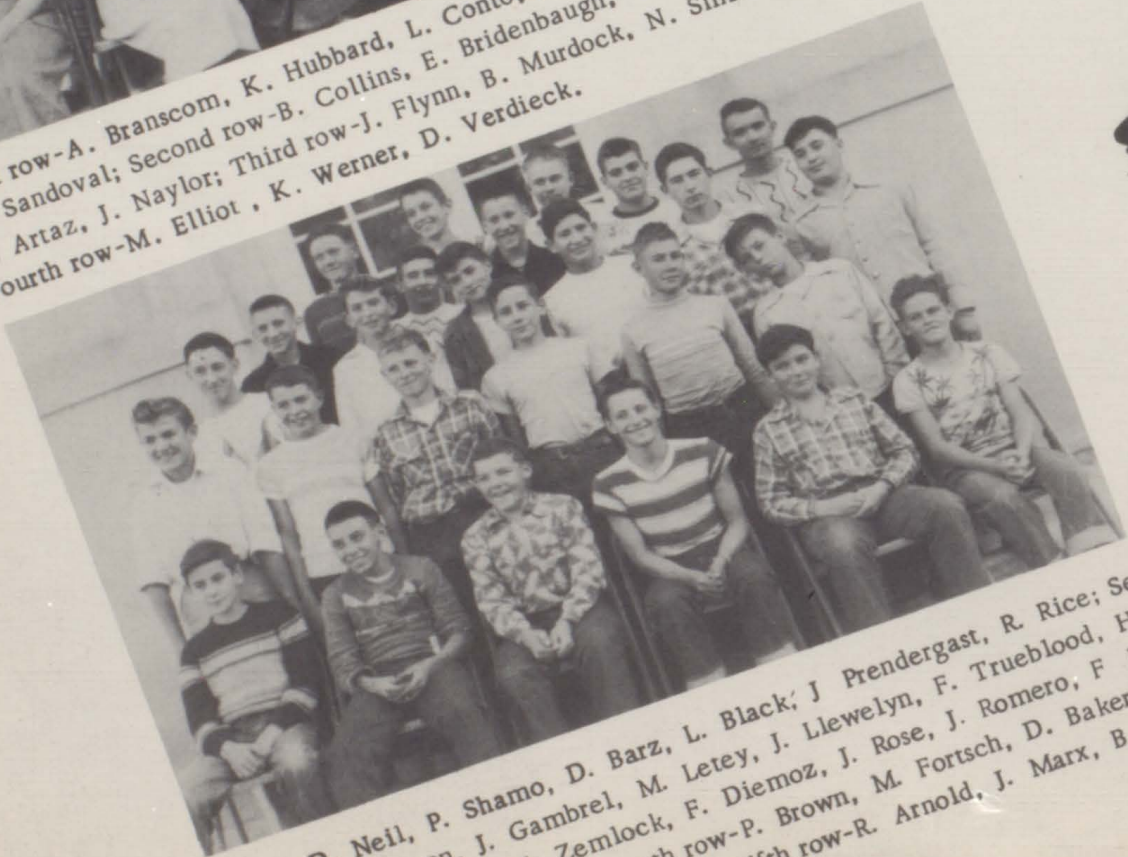
Freshmen



President-Dean Keas
 Vice President-Larry Graves
 Secretary-Judy Naylor
 Treasurer-Jere Leigh Bell



First row-A. Branscom, K. Hubbard, L. Conto, J. Malone, E. Zancanella,
 D. Sandoval; Second row-B. Collins, E. Bridenbaugh, B. Nutting, S. Taylor,
 E. Artaz, J. Naylor; Third row-J. Flynn, B. Murdock, N. Smith, J. Bell,
 Fourth row-M. Elliot, K. Werner, D. Verdieck.



First row-D. Neil, P. Shamo, D. Barz, L. Black; J. Prendergast, R. Rice; Second
 row-M. Anderson, J. Gambrel, M. Letey, J. Llewelyn, F. Trueblood, H. Bink-
 ley; Third row-M. Zemlock, F. Diemoz, J. Rose, J. Romero, F. Bertholf,
 G. Barksdale; Fourth row-P. Brown, M. Fortsch, D. Baker, L.
 Graves, D. Keas; Fifth row-R. Arnold, J. Marx, B. Wyatt.



Minutes of the First Student Council Meeting
October 4, 1950

The first Student Council meeting of 1950-'51 was called to order fifth period in the auditorium on October 4, 1950 by the president, Norman Parsley. Since there were no previous meetings the secretary then called the roll.

After this, Mr. Barrett spoke to the council and the Student Council is a representative governing body. The council we have now was reorganized in 1947. He also spoke to the council that they were not to be a good council to have a good school.

Our new sponsor, Mr. Gavin, spoke to the council and the council. He suggested that we elect a parliamentary secretary in order. Mr. Gavin also gave some rules on procedure.

Carol Hoody moved that we elect a parliamentarian. It was seconded. It was voted upon and the motion carried. Darwin Butcher Kelly, and Carol Hoody were nominated. Carol Hoody was elected parliamentarian.

Carol Hoody then moved that the council elect a public. Swain Adams seconded the motion. The motion carried. Darvin Deale Lee Kingston, and Frank Goe seconded the motion. Carol Hoody was elected parliamentarian.

The next business taken up was the letter from Knott High asking for information concerning our Student Council. Swain Adams moved that a constitution and some laws be sent to the Knott as that it might help them to set up their own Student Council. The council voted and Jo Ann Smith was elected parliamentarian.

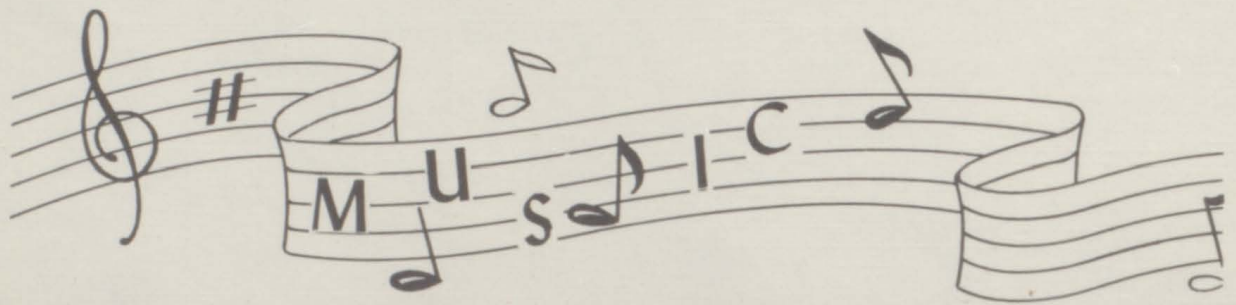
The secretary then read the letter from the Knott High School requesting the Knott High School students to be an assembly at Knott High School sometime during the year. Carol Hoody made the motion that we arrange to have an assembly for this school year. The motion was seconded. Mr. Swain Adams then made the motion that we arrange to have an assembly for this school year. The motion was seconded. The council voted and the motion carried. The council voted and Jo Ann Smith was elected parliamentarian.

The football dinner was discussed. The motion was made that we have a football dinner. The motion was seconded. The council voted and the motion carried. The council voted and Jo Ann Smith was elected parliamentarian.

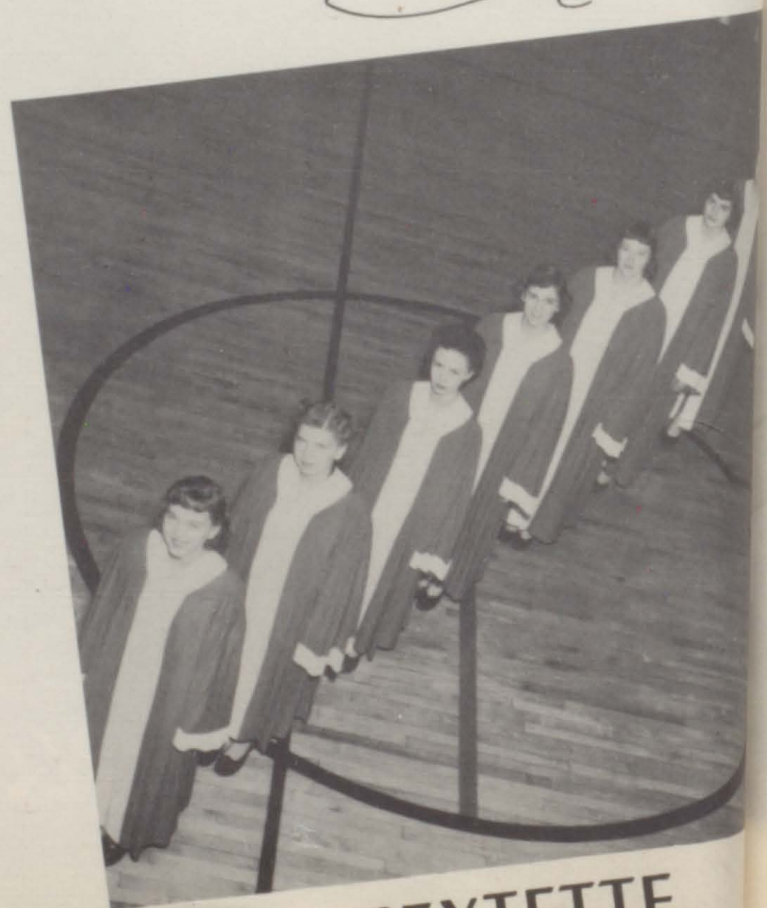
Organizations



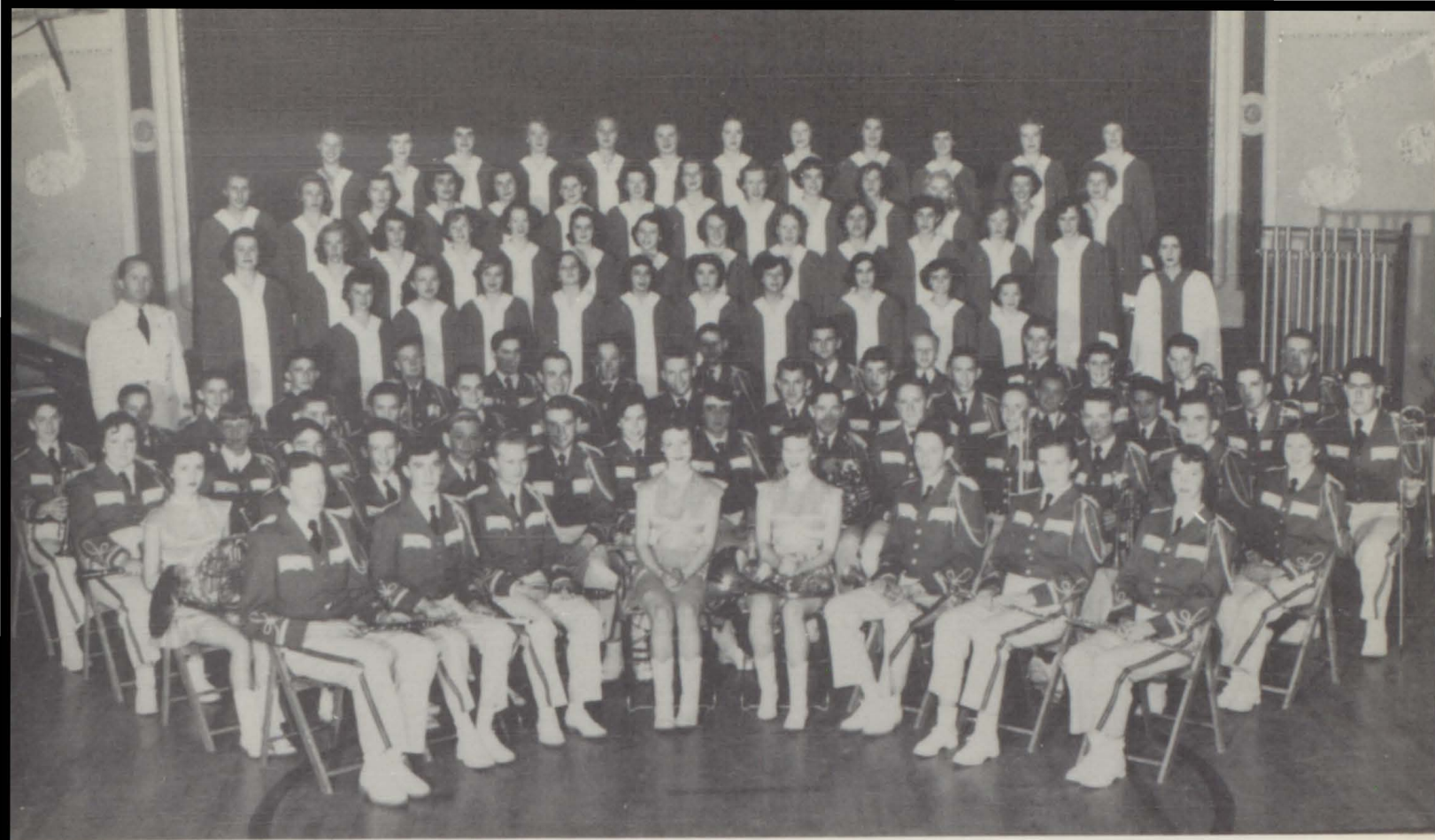
O
F
F
I
C
E
R
S



TWIRLERS



SEXTETTE

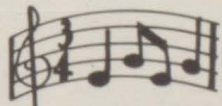


COMBINED BAND AND GLEE CLUB

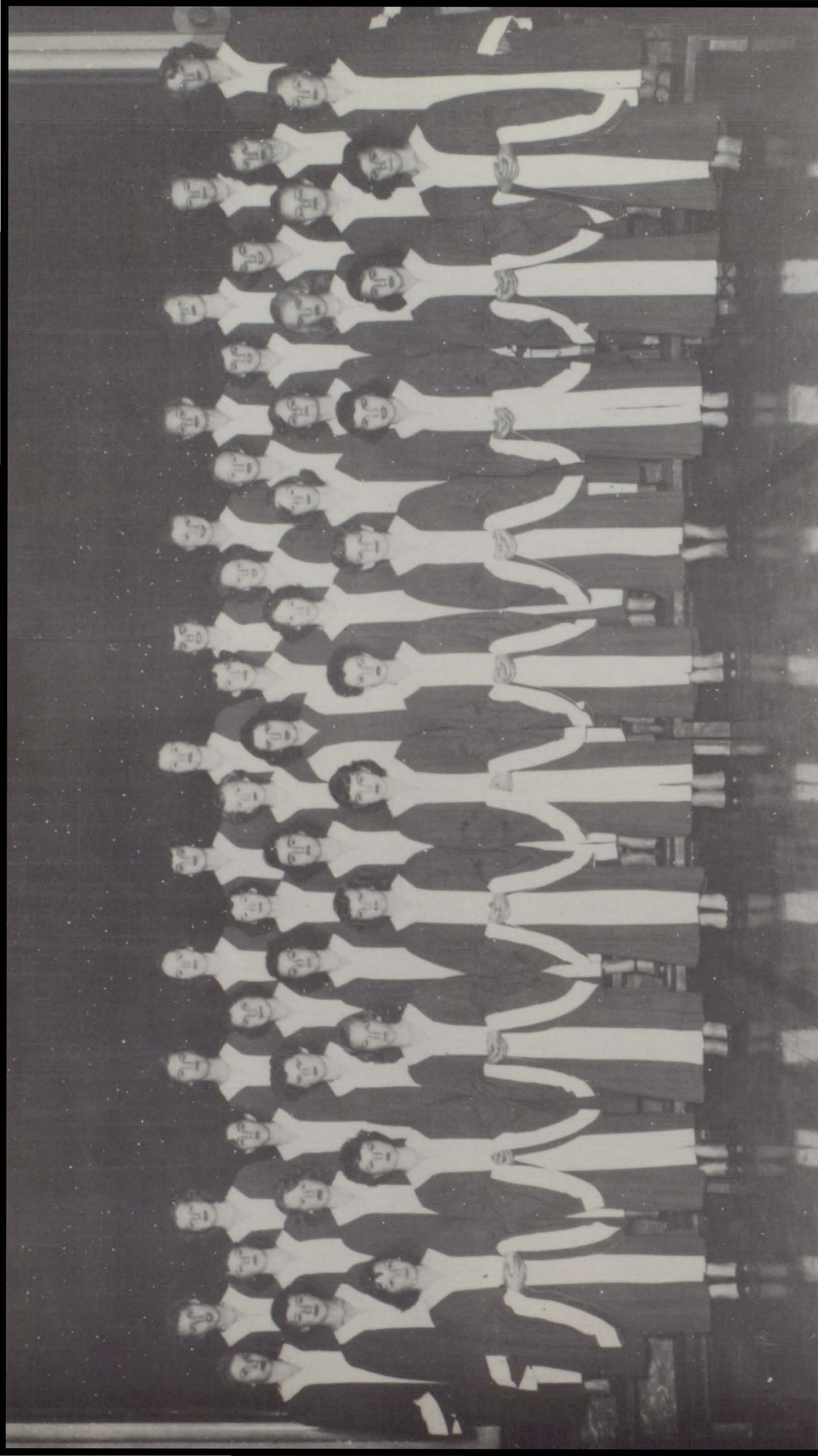
Each year the vocal and instrumental departments combine for a joint concert. This musical event is highlighted by the Glee Club singing several of their selections accompanied by the band. This type of concert has proven satisfactory and very fascinating to students of both departments. The combined group, the glee club and band, were honored by "THE SCHOOL MUSICIAN," an outstanding music magazine published in Chicago, with a picture and write up pertaining to the musical activities of Garfield County High School.



MISS PATSY GUADNOLA



MR. FRITS BAMBLE



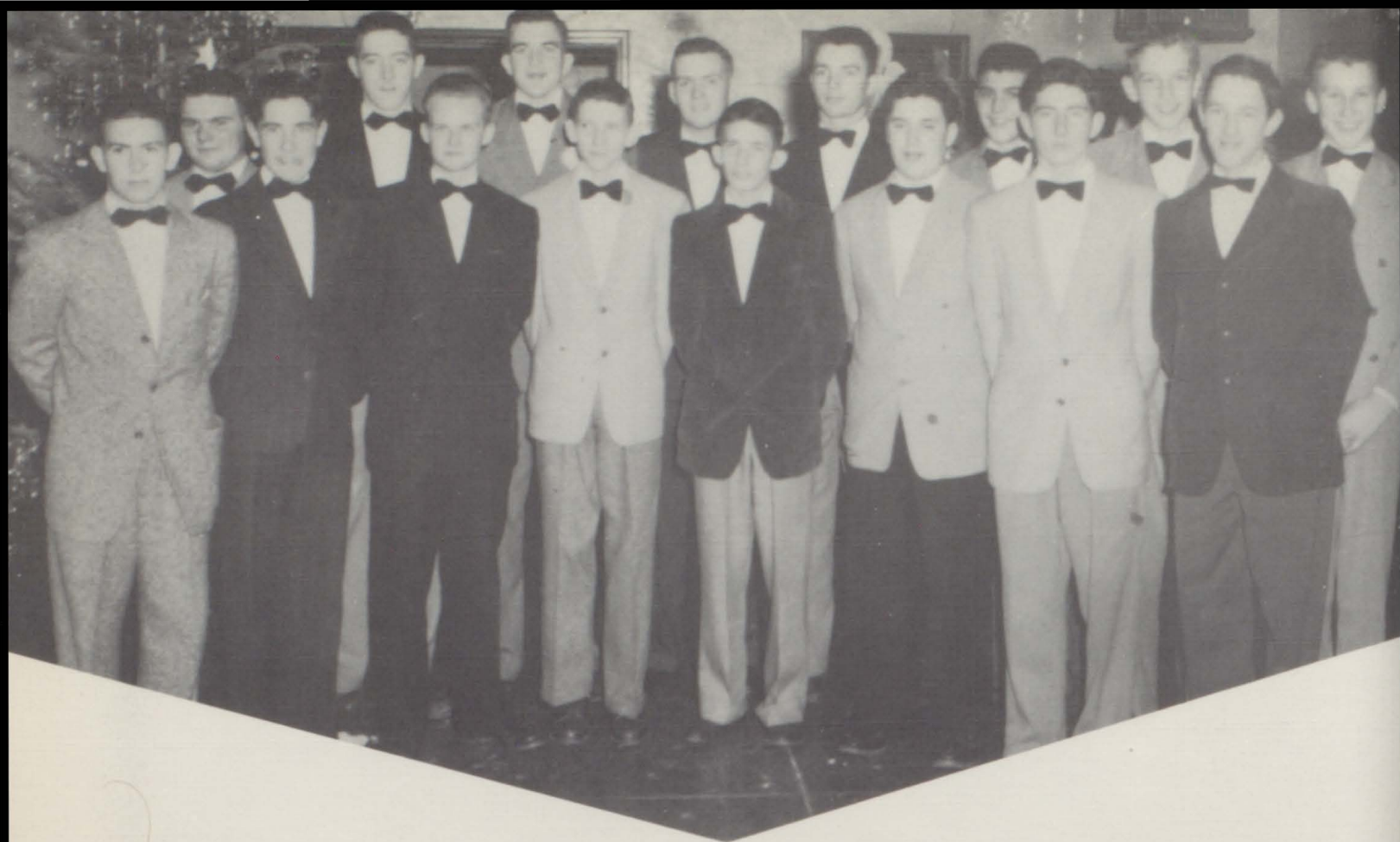
GIRLS' GLEE CLUB

The Girls' Glee Club, under the direction of Patsy Guadnola, always sings in a manner that brings adulation and praise from everyone. Music standards are high in this unique group. The statement Girls' Glee Club, and delightful music are synonymous. This hustling group with their immaculate uniforms, combined with their zest for good music and high quality of performance, add much to the musical activity of the high school. The annual Christmas formal dinner is one of the highlights of the Christmas season. It is given in honor of the faculty and school board members, and the Glee Clubs sing Christmas songs which have been especially prepared for the occasion.



BAND

Under the direction of Mr. Fritz Bramble, the high school band has made a tremendous amount of progress. It was selected, last spring, to represent all Class B bands throughout the state at the Music Educator s'Conference in Denver. For two consecutive years, this fine band has received a rating I at the Western Slope Music Festival, and both the band and its director have received commendation from outstanding judges for their fine standards of performance. Each year the band presents its concert, "Musical Moments." This includes selections by the full band, instrumental ensembles and soloists. This band is the only band on the Western Slope that makes use of the black light.



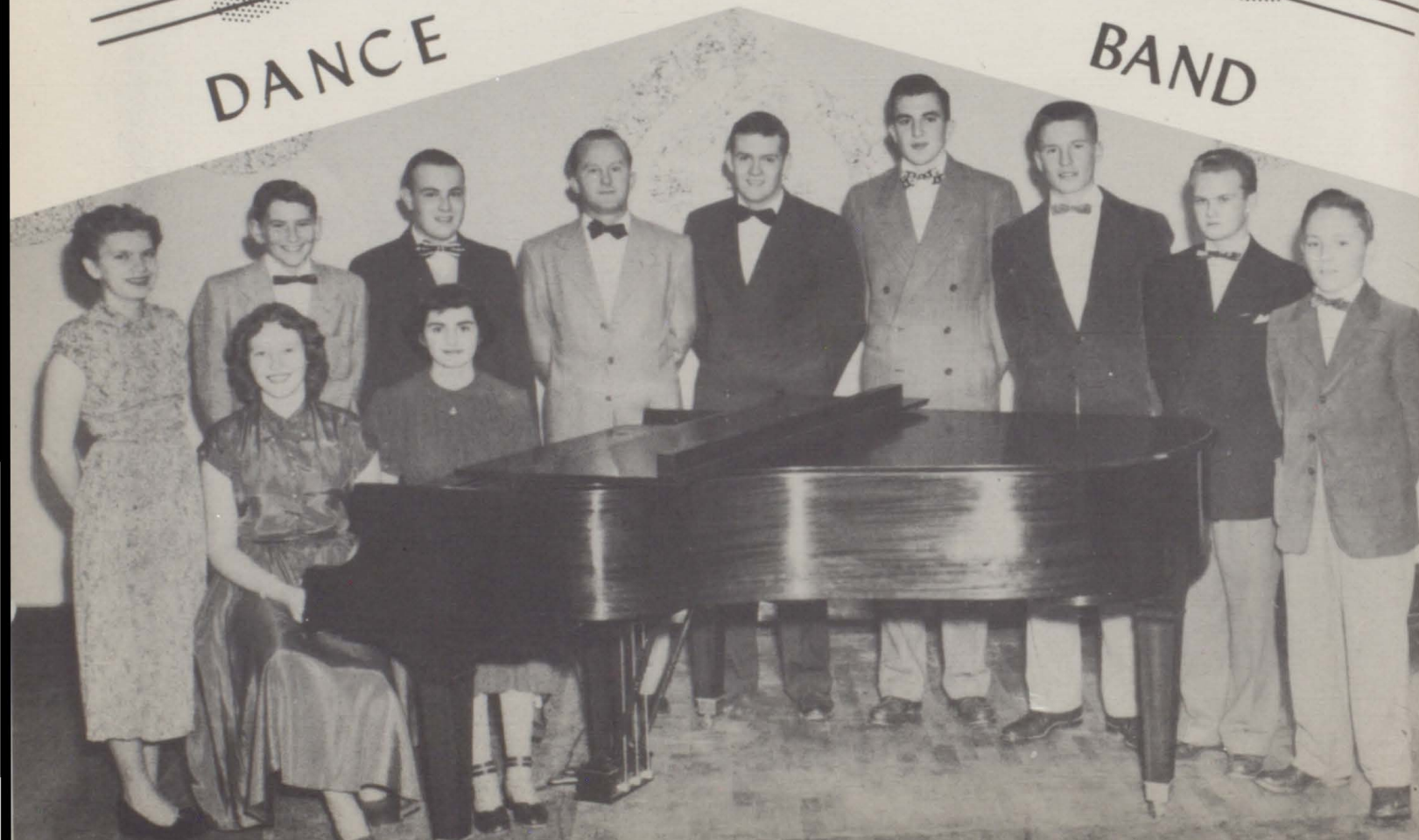
BOYS' GLEE CLUB



DANCE



BAND





GCHS OPERETTA

Both Glee Clubs of GCHS present an operetta annually to help finance their trip to Band Tournament. Colorful Dutch costumes, beautiful lighting effects, along with the scenery, and the new attraction of an orchestra made "Hulda of Holland" one of the most outstanding operettas presented.

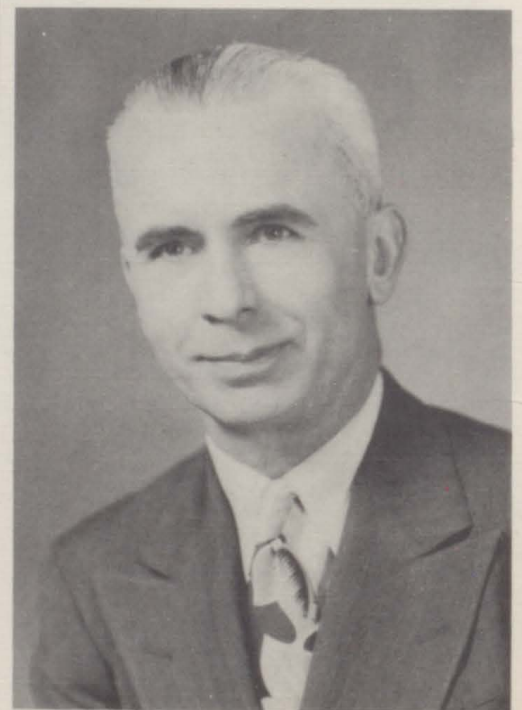


CAST

Student Council



President - - - - -	Ken Hubbard
Vice President - - - - -	Sally Colohan
Secretary - - - - -	Charley Ross
Treasurer - - - - -	Joe Marx
Senior Representative - - - - -	Dave Brown
Junior Representative - - - - -	Billie Anderson
Sophomore Representative - - - - -	Molly Bradshaw
Freshman Representative - - - - -	Miles Anderson
Sponsor - - - - -	Mr. Sharp



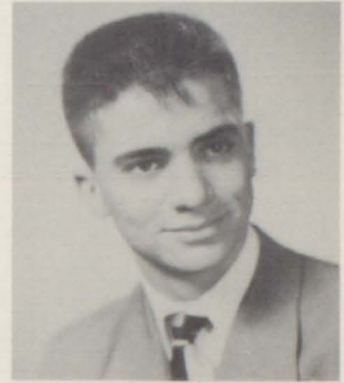
NATIONAL HONOR SOCIETY



KENNETH HUBBARD



FRANCES BAILLIE



NORMAN ROSS



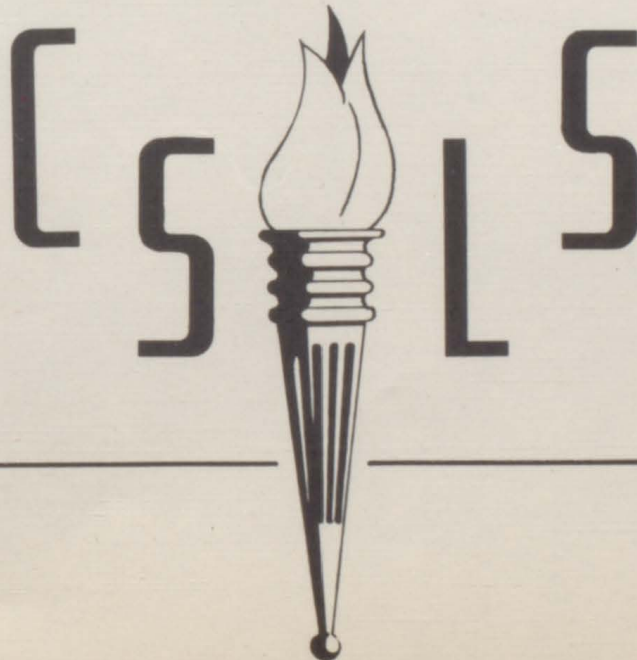
ANITA HUNTLEY



BETTY BERTHOD



BETTY McCLURE





PEP
CLUB

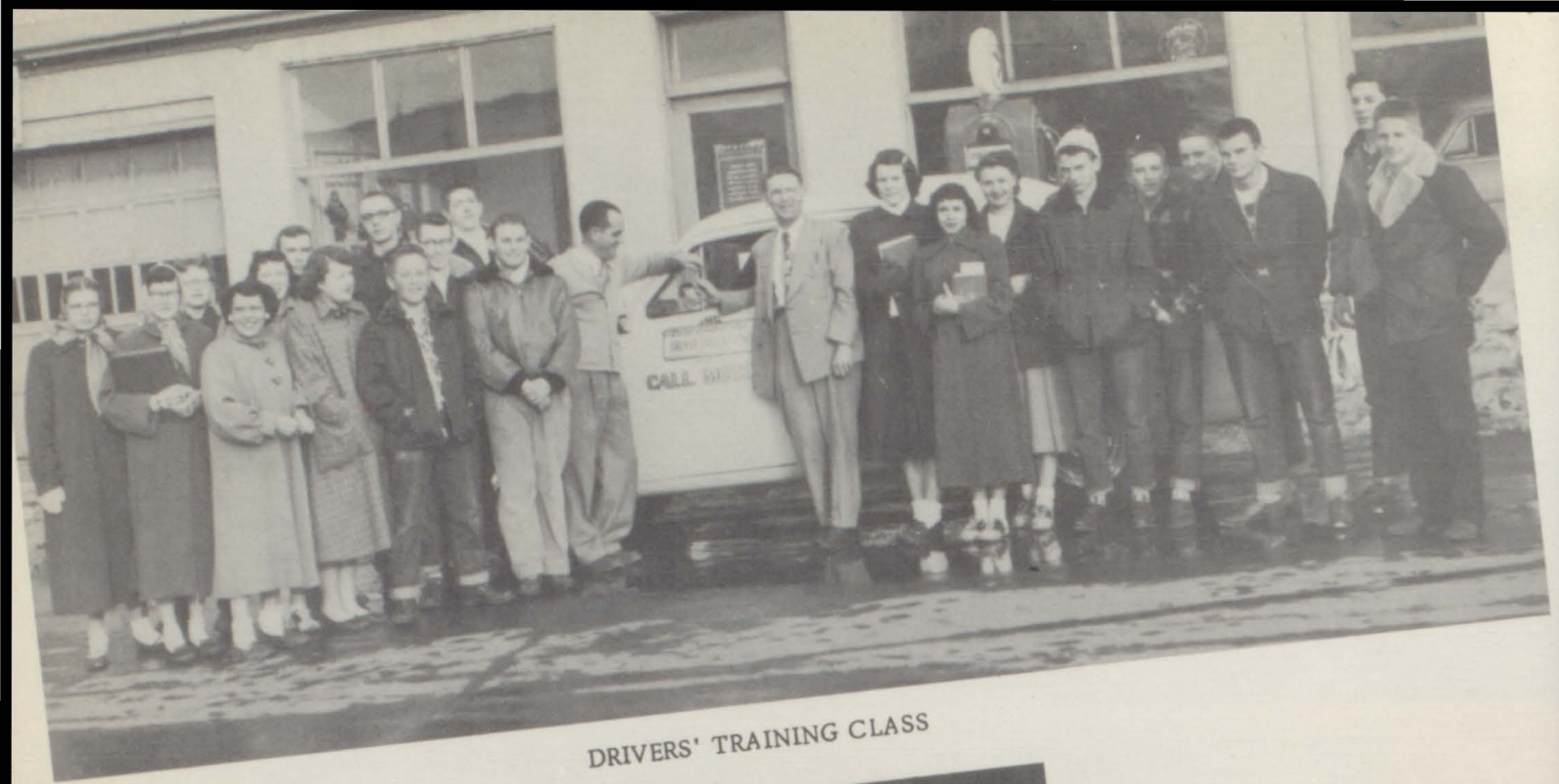




CANTEEN

PUBLICITY CLUB





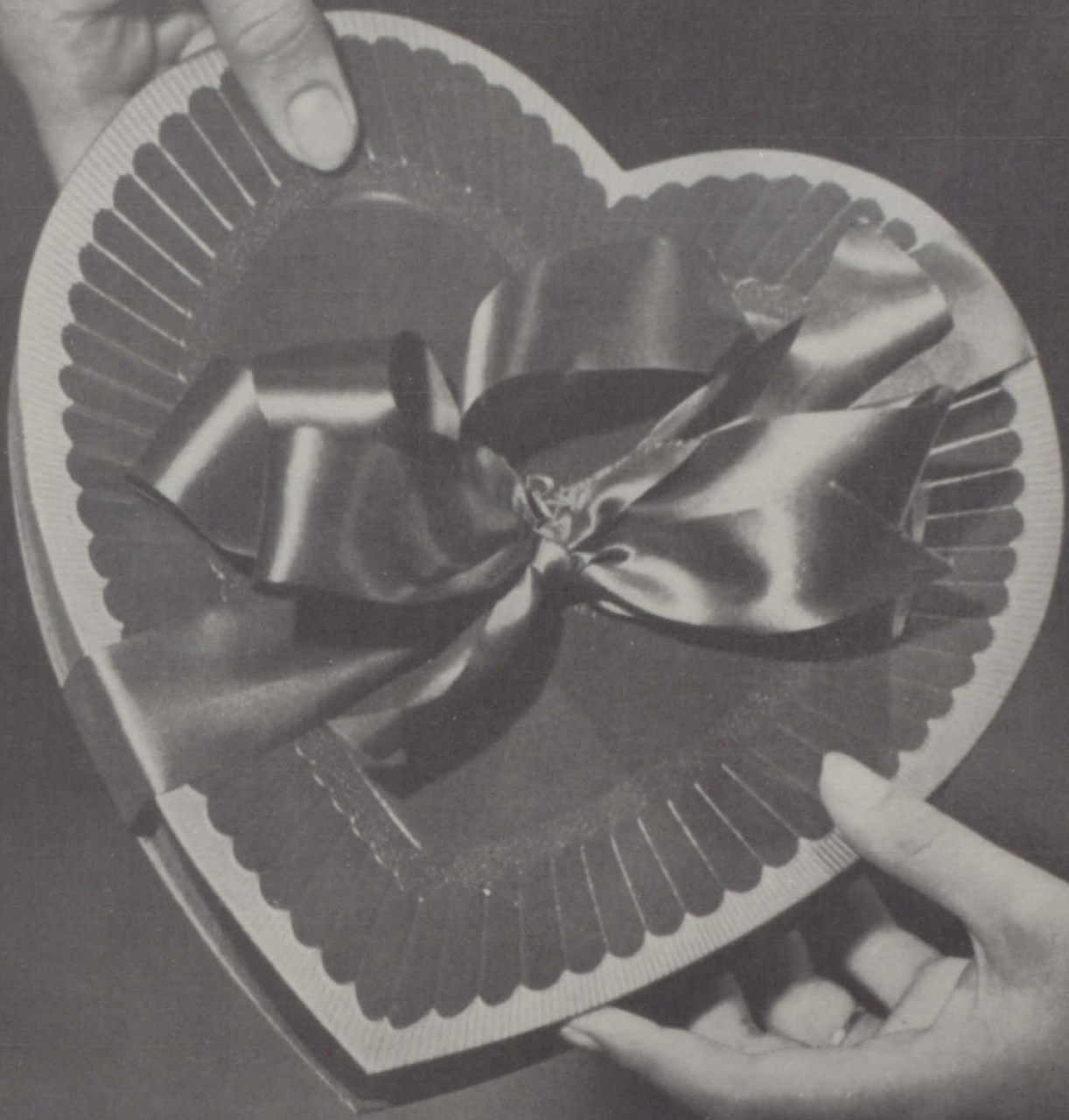
DRIVERS' TRAINING CLASS



"G" CLUB

WOOL GROWER'S





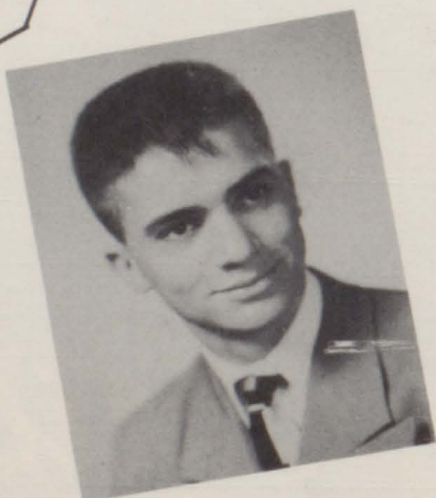
Favorites



KENNETH HUBBARD
Laughing, smiling evermore;
Ken's the boy we all adore.



ROSE ANN LETEY
She may seem quiet and look naïve,
But if you know Rose, that's hard to believe.



NORMAN ROSS
Handsome and gay; can't you guess?
Norm's the pride of G.C.H.S.

STARS

NADRA BENEDECK
Ready and willing to do more than
her task;
For a better friend we'll never ask.



DAVE BROWN
Cheerful and friendly all the day;
Dave will always lead the way.

ANITA HUNTLEY
The fates to our Anita have been
kind;
Her beauty and wit are easy to find.





CHRISTMAS FORMAL



HOMECOMING QUEEN



1951-JUNIOR PROM



Activities

GREAT CAESAR'S GHOST



SENIOR PLAY CAST

Mrs. Penelope Maxwell-	-----	-ANITA HUNTLEY
Mrs. Phoebe De Royster-	-----	- JOAN BURGER
Deborah De Royster-	-----	- DONNA SADLER
Phineas Farthingale-	-----	-FRANK ARBANEY
Helen Maxwell-	-----	-NADRA BENEDECK
Tommy Tucker-	-----	- NORMAN ROSS
Aunt Polly Maxwell-	-----	- IDA JAMMARON
Johnson-	-----	-KENNETH HUBBARD
Esther-	-----	-JUDY BLOTIAUX
Mahjah The Mystic-	-----	- STRAT SAUNDERS
Dich O'Donnell	-----	- DON VanHOOSE
Hattie-	-----	-GERTRUDE GARDNER

and

GREAT CAESAR'S GHOST !

Sponsor-	-----	- MRS. M. L. RILEY
Stage Managers-	-----	- B. COLEMAN, B. COOK, PAUL NEISLANIK



LOVE IS TOO MUCH TROUBLE

Toasty- - - - -	SHIRLEY BAKER
Joe Burke- - - - -	-DON ALLAN
"Pinky" Hamilton- - - - -	TED SHELTON
Ogden "Ogg" McClosky- - - - -	MELVIN BRITTON
Connie Ashton- - - - -	JUDIE MEREDITH
Ebb Dunham- - - - -	- JACKIE BUSBY
Flo Dunham- - - - -	-SHIRLEY BOND
Shirley Bradford- - - - -	- MARGIE HOOK
Sugar Lou Jackson- - - - -	ELEANOR GRAVES
Monica Bates- - - - -	-SALLY COLOHAN
Mrs. J. Worthington Bates- - - - -	JOAN HUBBARD
Dr. Pillsy- - - - -	- LYNN GILL
Miss Emily Ross- - - - -	-SHARON SCHINKEL
Cliff Hayward- - - - -	- BERT BROWN
Sponsor- - - - -	MR. GREEN





"As Younguns"

1. DONNA LOU SADLER 2. MAURICE BOSLEY 3. SENIORS AS SIXTH GRADERS 4. CAROLYN HANSEN 5. LABETH SUMMERS AND NADRA BENEDECK 6. DONA RUTH LOUGH 7. JIMMY GAMBREL AND ELEANOR ZANCANNELLA 8. RILLA RADER 9. SHIRLEY BAKER 10. DOROTHY BINKLEY 11. JON AND LYNN GILL 12. EDITH NEIL 13. COACH STUBLER 14. LAVANIA ALLEN 15. DICK MARX AND DAVE BROWN 16. LAVONNE CONTO 17. THE CLASS OF '54. 18. ANITA HUNTLEY 19. DONALD NUTTING, RUSSELL SUMMERS, AND JIM FISH 20. LARRY AND ELEANOR GRAVES.



1. PISTOL PACKIN' DIEMOZ. 2. OUT-HOUSE RENDEZ VOUS
 3. WHAT HAPPENED? 4. IS THAT YOU, JUDIE?
 5. G.C.H.S'S ELITE FALL FORMAL. 6. THAT PEP-
 SODENT SMILE. 7. "DANCE ME LOOSE" 8. BOSLEY'S
 FAMILIAR STUDY HALL LOOK. 9. HELPING HANDS
 FOR THE SICK (??) 10. STILL USING YOUR TOOTHBRUSH,
 O'NEIL? 11. EEEK! THOSE SENIORS? 12. COOKING
 CUTIES 13. DELICIOUS, NUTRITIOUS, IT MAKES YOU FEEL AMBITIOUS
 14. NIGHTY NIGHT, GIRLS.

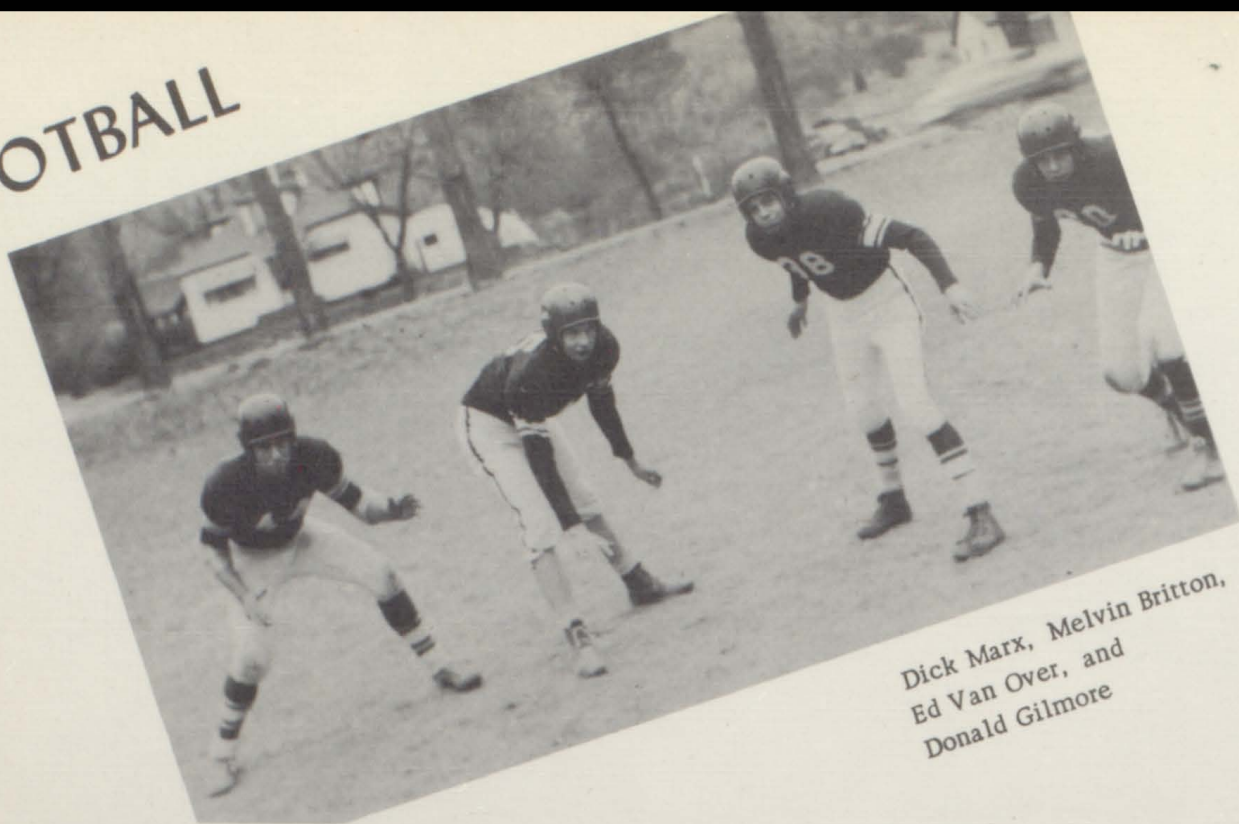


1. Boom! No brains. 2. New belly tango. 3. "Ah! Cut it out." 4. Bottoms up! 5. Bikini specials 6. Look, we're ready now. 7. Ya la-azy cr-viter, you! 8. The crystal ball shows that --. 9. "Twang, twang" 10. P.J. fashion show. 11. Maestro at work.



Athletics

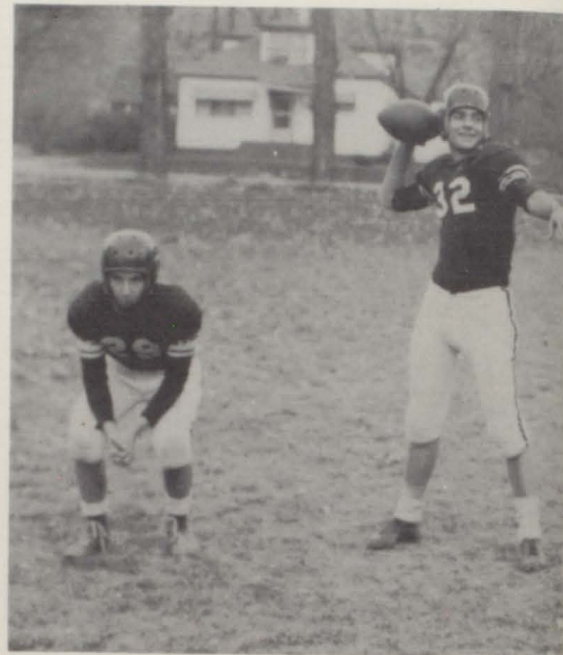
FOOTBALL



Dick Marx, Melvin Britton,
Ed Van Over, and
Donald Gilmore



Lloyd Caster, Jim Fish, Ken Hubbard, Charles Ross

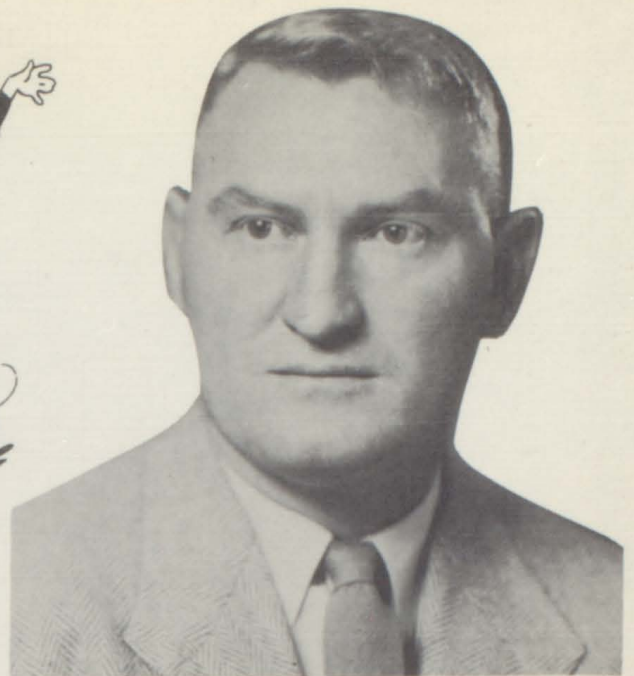


Jim Nutting and Norm Ross

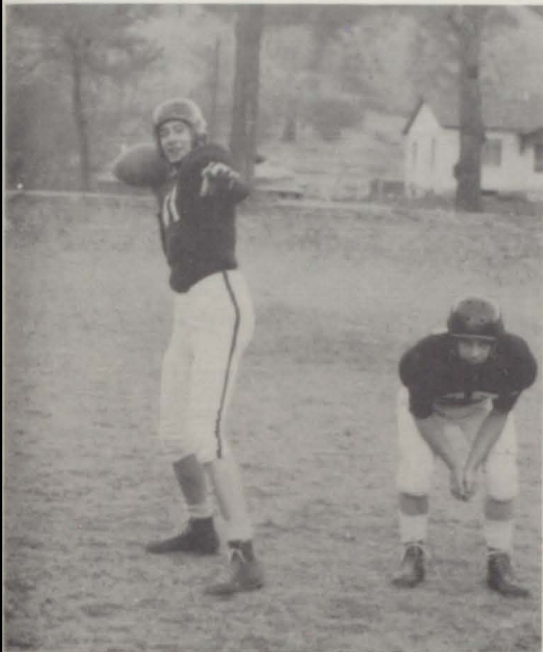




Coach Maurice Bosley



Coach Nick Stubler



Don Allan and Ted Shelton



Lynn Gill
Don Nutting
Robert Kuretich
Bert Brown



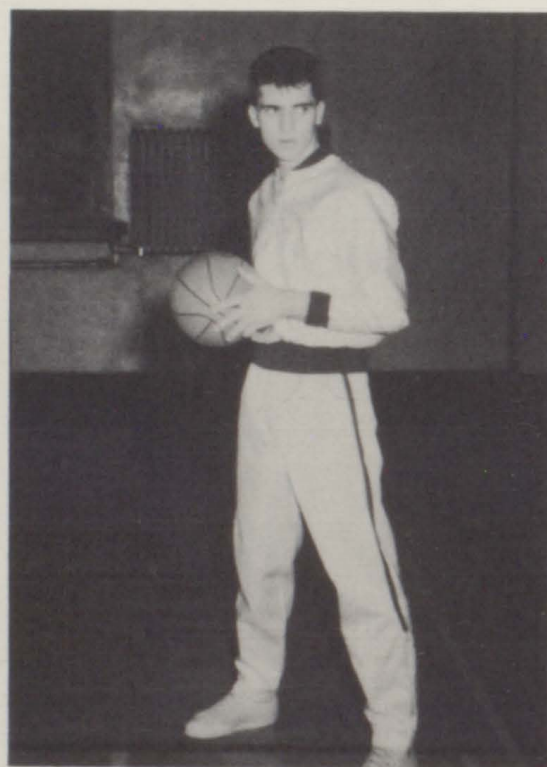
John Turner, Frank Gilmore, and Dave Brown



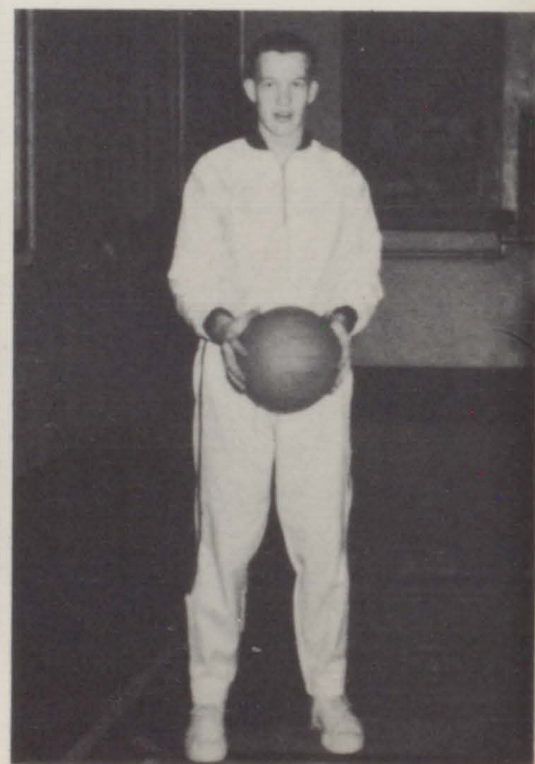
Back row: Joe Marx, Elmer Arboney, Robert Garnett, Charlie Ross, Gilbert Overlin, Dick Baker, Ted Shelton, Jim Rannells, Dean Keas, Coach Maurice Bosley. Second row: Frank Gilmore, Don Allan, Norman Ross, Don Gilmore, Dave Brown, Dick Marx, Manager Bill Kyner. First row: Robert Kuretich, Jim Nutting, Donald Van Hoose.



DON ALLAN
Center



NORMAN ROSS
Forward

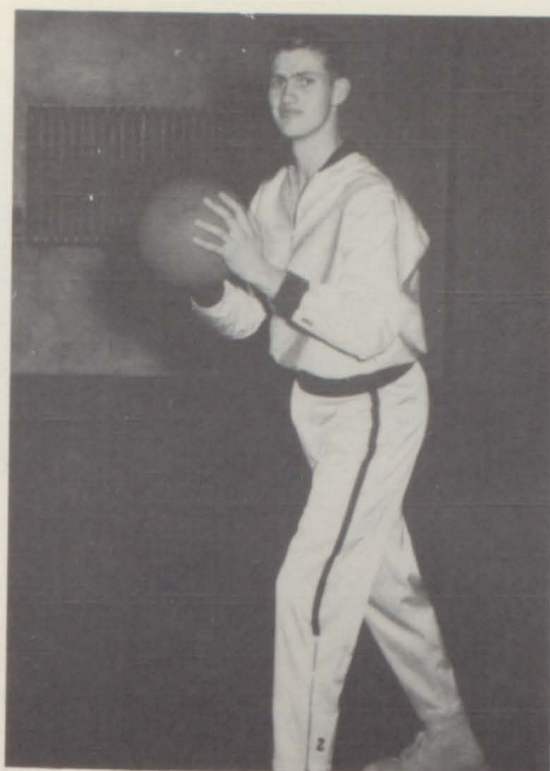


FRANK GILMORE
Forward

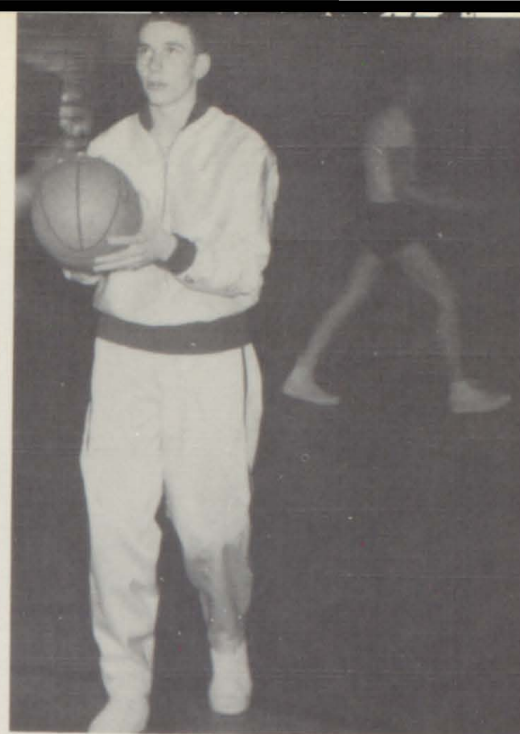
BASKETBALL



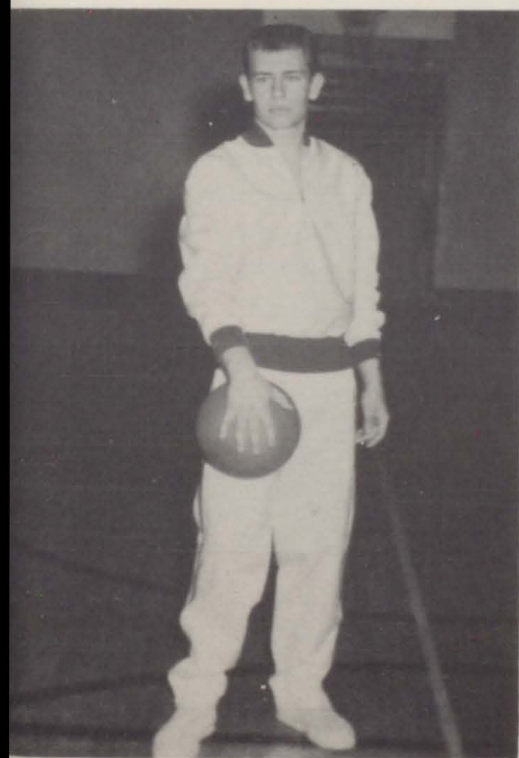
DONALD VAN HOOSE
Guard



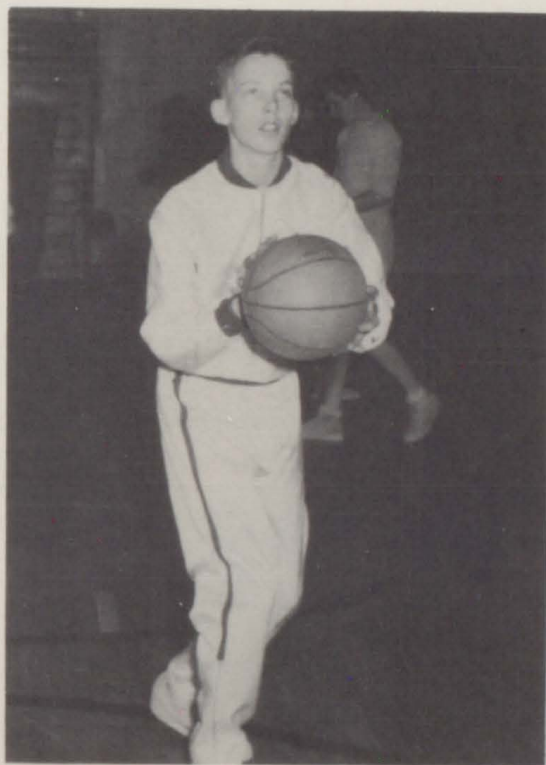
DAVID BROWN
Forward



JIMMY NUTTING
Guard



DICK MARX
Forward

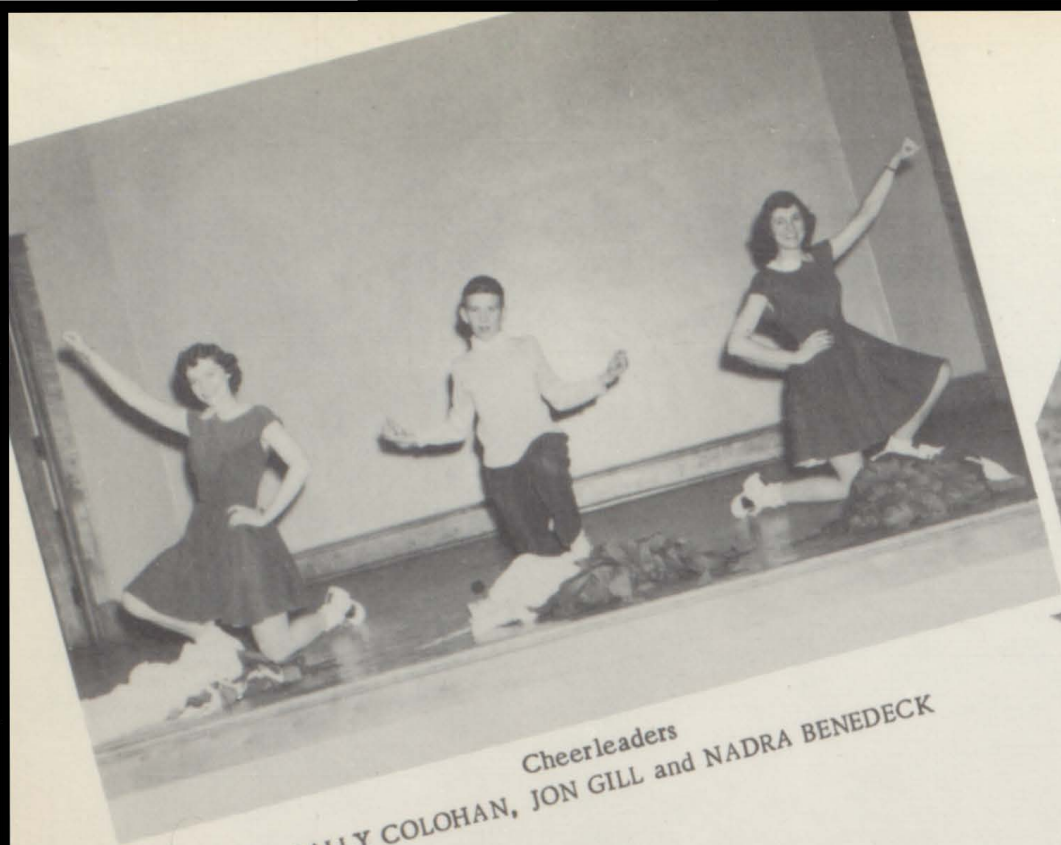


DON GILMORE
Forward



ROBERT KURETICH
Guard





Cheerleaders
SALLY COLOHAN, JON GILL and NADRA BENEDECK



Manager
BILL KYNER

FOOTBALL SCORES

Demons - - - - - 13	Oak Creek - - - - - 6
Demons - - - - - 7	Palisade - - - - - 14
Demons - - - - - 12	Steamboat - - - - - 6
Demons - - - - - 0	*Central - - - - - 7
Demons - - - - - 13	*Rifle - - - - - 14
Demons - - - - - 6	*Craig - - - - - 20
Demons - - - - - 24	*Fruita - - - - - 14
Demons - - - - - 20	Grand Jct. Jr. Varsity 0
Demons - - - - - 52	Paonia - - - - - 7

*CONFERENCE GAMES

BASKETBALL SCORES

Demons - - - - 29	Rifle - - - - - 35
Demons - - - - 40	Basalt - - - - - 31
Demons - - - - 38	Carbondale - - - 32
Demons - - - - 46	Paonia - - - - - 44
Demons - - - - 29	Palisade - - - - 40
Demons - - - - 27	*Fruita - - - - - 40
Demons - - - - 32	Meekeer - - - - - 44
Demons - - - - 30	*Central - - - - - 31
Demons - - - - 35	Carbondale - - - 40
Demons - - - - 24	*Rifle - - - - - 30
Demons - - - - 45	*Craig - - - - - 30
Demons - - - - 39	Meekeer - - - - - 43
Demons - - - - 47	*Rifle - - - - - 46
Demons - - - - 43	*Fruita - - - - - 48
Demons - - - - 44	Palisade - - - - 38
Demons - - - - 46	Carbondale - - - 48
Demons - - - - 38	*Central - - - - - 37
Demons - - - - 35	Paonia - - - - - 30
Demons - - - - 51	*Craig - - - - - 56
Demons - - - - 43	Delta - - - - - 57

*CONFERENCE GAMES





CALENDAR OF EVENTS



DATE

- 3 Students register for classes
- 7 The day for the Frosh!
- 8 Student Council election
- 10 National Assembly
- 14 Football game at Oak Creek
- 17 Comm. Ed. Assn.
- 21 Palisade here--canteen
- 25 Crusade for Freedom Drive
- 28 Glenwood vs. Steamboat--canteen

DATE

- 5 Carbondale here--canteen
- 11 National Assembly--Fruita there
- 12 Meeker here--canteen
- 18 Central here
- 19 Carbondale there
- 21 Glenwood vs. Rifle
- 25 Team goes to Craig
- 26 Meeker there
- 30 Seniors attend College Days at Rifle



- 3 Assembly for Girls' and Boys' State
- 5 Central here
- 6 Square Dance
- 11 National Assembly
- 12 Craig here--canteen
- 15 Community Concert
- 17 General Assembly
- 19 Beat Rifle! (there)
- 24 Fruita here--canteen
- 31 Rainbow Halloween Masquerade Ball



- 12 Carbondale here
- 14 National Assembly
- 15 Team goes to Central
- 16 Paonia there
- 18 Teachers' meeting
- 19 PTA Meeting
- 20 Ceremonies of National Honor Society
- 22 Glenwood vs Craig
- 23 Delta there
- 27 "Hulda of Holland" presented by Glee Clubs



- 1 National Assembly
- 2 Hayden vs. Glenwood
- 5 Comm. Ed. Assn.
- 8 Rally
- 9 Glenwood vs. Paonia
- 10 Sadie Hawkins Chase
- 16 Glee Club Concert
- 19 County Teachers' Meeting
- 24 Homecoming Day and Dance
- 26 National Assembly
- 28 Senior Play teasers
- 30 Senior Play



- 5 Drama Class Assembly
- 7 Delta Tournament
- 17 Comm. Ed. Assn.
- 19 Sophomore Class Assembly
- 26 Community Concert
- 27 National Assembly--Jr. Play
- 3, 4 FHA State Convention
- 10 Easter vacation
- 11 Easter vacation
- 25 Spring Music Festival



- 11 P. T. A.
- 12 Glee Club Girls' Carol
- 15 Paonia here
- 17 Teachers' Meeting
- 18 Boys go Xmas caroling
- 20 Glee Club Dinner
- 21 Frosh Assembly--Palisade there
- 22 Christmas Formal



- 9 Exhibit
- 16 Prom
- 24 Class Night
- 25 Baccalaureate
- 29 Graduation



