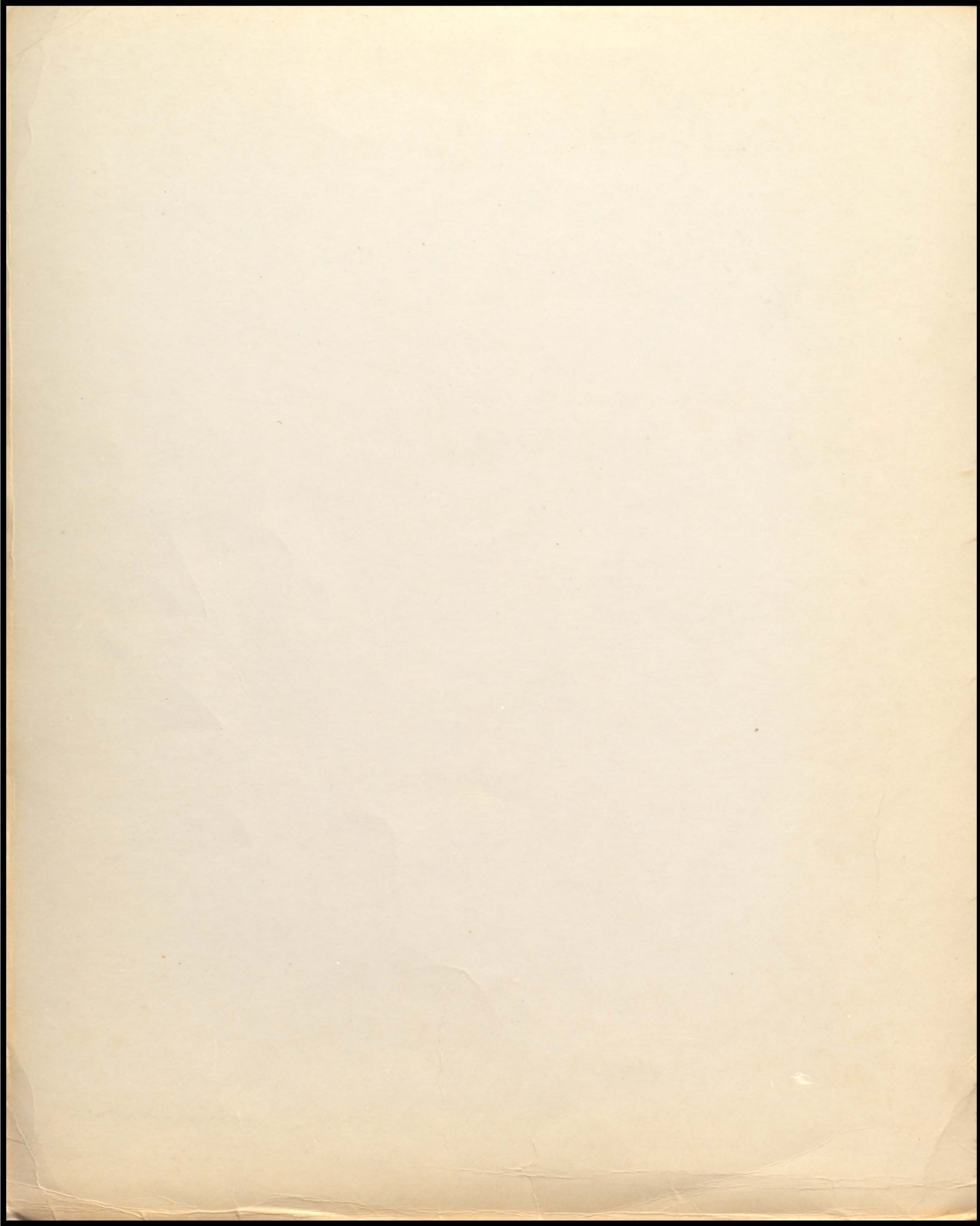


Yampah

1948

Garfield County High School

Glenwood Springs, Colorado



The

1948

Yampah

Yearbook of

Garfield County High School

Glenwood Springs, Colorado

Volume XXV

Yampah Staff

Co-editors	Norma Benedeck, Marian Duffy
Senior Representative	Brad Pretti
Junior Representative	Twylla Read
Sophomore Representative	Joan McDonald
Freshman Representative	Carol Mann
Sports Editor	Marcus Nordberg
Society Editor	Sharon Donegan
Activities Section	Charles Dever
Senior Stars Section	Joyce Johnson
Business Manager	Brad Pretti

Contents

ADMINISTRATION

Executives and Faculty

CLASSES

Senior	Junior
Sophomore	Freshman

ACTIVITIES

Clubs
Publicity, Girls' Glee, Future Homemakers'
Dramatic, Boys' Glee, Math
Scholastic Team
Canteen Committee
Student Council
National Honor Society
Band
Music Team
Dramatics
Senior Class Play Junior Class Play
Society

ATHLETICS

SENIOR STARS

Preword

Unlike previous years this year's Yampah was printed commercially. Because it was commercialized, much additional work was necessary to compile this concise but complete record of your high school days. Although we are incapable of printing all the wonderful times of our teens, we hope that in years to come this book will bring back all the cherished memories of your high school days. Then the purpose of the 1948 Yampah will be fulfilled.



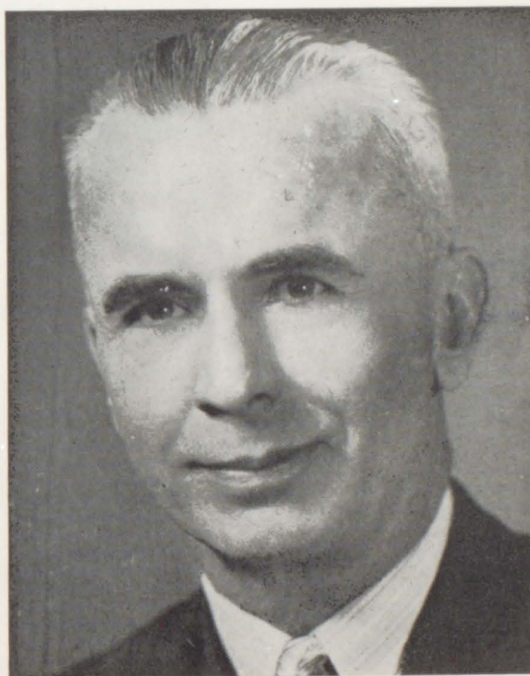
Mr. Frank Latson

In Memoriam

We, the students of G.C.H.S. pay tribute to a teacher who gave the best years of his life to the furtherance of education for the young men and women of this community. To this respected instructor, credit is due for worthy accomplishments much too numerous to mention. Patient and helpful, kind and understanding, Frank Latson will long be remembered by all students with whom he associated. G.C.H.S. mourns the passing of a splendid man and a close friend.



Mr. H. J. Igo B. S., M. S.
Superintendent of Schools



Mr. Walter V. Sharp
Principal of High School

Mrs. Lila Almgren A. B.
Mathematics



Mrs. Emily Ann Guth B. S.
Home Ec. I, II, III, General Science



Mr. Donald Baillie B. A.
Band, Shop



Mrs. Rilla Rader B. A.
English II, Girls Gym



Miss Helen K. Boyd
Commercial



Mrs. Cynthia Stapp, A. B.
Literature, Latin, Business English



Miss Patricia Guadnola A. B.
Boys and Girls Glee Club, English I



Mr. Nicholas Stubler, B. C. S.
History, Athletics, Social Science



Mr. H. J. Igo B. S., M. S.
Superintendent of Schools
American Problems



Mr. Walter V. Sharp B. S., M. S.
Chemistry, Physics, Biology

Senior Class



Top Row: Long, Colohan, Davies
First Row: Kelly, Meador, McFall

CLASS OFFICERS

John Meador, President
Bill Davies, Vice President
Barbara Kelly, Secretary
Charles Colohan, Treasurer
Dona McFall, Student Council Representative
Clifford Long, Student Council President

CLASS SPONSOR

Rilla Rader

Class Poem

SENILE SONG

By Marian Duffy

When I am old and my hair is gray,
I'll caution the youth of a future day
About going too far and flying too high
And not remembering the limit's the sky.
They'll silently question my freedom of speech
And wonder what gives me the right to preach
Have I forgotten I was young too,
And did the things they like to do?
With this in mind I'll settle down
And list the things that make me frown,
Remembering again the things we did
When I was just a high school kid.
I'll laugh at the silly clothes we wore
The Coats and frocks that neared the floor,
And in my mind I'll clearly see
Our team on another winning spree.
As for flying too high or going too far,
We couldn't do that with a wreck of a car;
But you can be sure that I'm certainly glad
That I can remember the fun I've had.
So jump in your airship and go zooming around—
I'll stay here with my feet on the ground.
The future is yours but the past is mine
For old age alone has drawn the line.
And, though I'm old and my feet may totter,
I'd like to bet my son and daughter
That in all experiences varied and great
They'll never compete with forty-eight.

Class Colors — Purple and Gold

Class Flower — Pansy

Class Motto

"Times change and we change with them"

AMICHAUX, PAUL—Handicraft 1; Athletics 3; Band 1, 2, 4; Freshman Play 1; Orchestra 2; G Club 3, 4; All-Conference Tackle 4; All-Western Slope Guard 4; Football Co-captain 4; Football 1, 2, 3, 4; Basketball 1, 2, 3, 4; Band Vice President 4; Student Council 3; Inter-class Basketball 1, 2, 3, 4.



BROWN, CATHERINE—Littleton 2; Grand Lake 1; Newspaper 1, 2; Canteen Comm. 3, 4; Pep 3, 4; Dramatics 3, 4; Swimming 4; Pres. Dramatics 3; Sec.-Treas. Canteen 3.

BELL, PATSY—Graham, Texas 1, 2, 3; West High, Denver 3; Biology Club 1, Home Ec. 2; Dramatic 3; Foreign Relations 2; Sec.-Treas. Biology 1; Sec.-Treas. Class 2; President Class 3; Drum Majorette 1, 2, 3; Pres. Commercial Class 3; Y-Teen 1, 2, 3.



BUKOWICH, FREDERICK—Handicraft 1; Band 1; Boys' Glee 2, 4; Inter-class Basketball 1, 2, 3, 4; Football 4; Basketball 3, 4; G Club 4; Treas. Handicraft Club 1, 2; Swimming 3; Inter-class Baseball 3, 4.

BENEDECK, NORMA—Athletic Club 1; Glee 1, 2, 4; Pep 1, 2, 3, 4; Publicity 2, 3, 4; Operetta 1, 2, 3, 4; Sextette 1, 2; Dramatics 3; Class Play 3, 4; Trio 4; Student Council 1; Cheerleader 1, 2, 3, 4; Pub. Secretary 2; Chairman Canteen 3; Yampah Co-editor 4; Inter-class Basketball 1, 2, 3, 4; Swimming 3, 4; Nat. Honor Society 4; Canteen Comm. 3, 4; Pres. Glee 4; Scholastic Team 1, 3, 4; Selected for Who's Who In American High Schools.



BURNETT, BUDDY—Dramatics 1, 3; Operetta 1; Handicraft 2; Basketball 1.

BERTHOLF, DESMOND—Handicraft 1; Boys' Glee 2, 3; Study 4; Football 1.



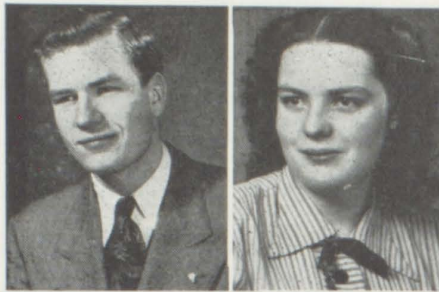
CHASE, BETTY—Seminole, Oklahoma 1, 2, 3; Dramatics 1, 4; Class Play 3, 4; Speech 3; Football Queen 1; Pep 1, 4; Swimming 4; Canteen Comm. 4; Paper Staff 1, 2, 3; Pub. 2; Co-editor Okla. Paper 3.

BROCKWAY, GENE—Dramatics 1; Handicraft 1; Operetta 1, 3; Band 1, 2, 3, 4; Current Events 2; Inter-class Basketball 2, 4; Glee 3, 4; Operetta 1, 3; Football 1, 2, 3, 4; G Club 3, 4; Basketball 1.



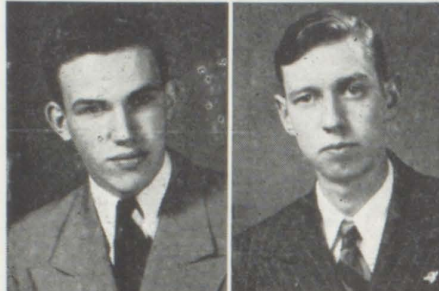
COLOHAN, CHARLES—Dramatics 1, 2; Freshman Play 1; Boys' Glee 2; Inter-class Basketball 1, 2, 3; Athletic 3; Publicity 4; Class Treas. 4; Football 1, 2, 3, 4; Basketball 1, 2; G Club 4; Inter-class Basketball 4; Inter-class Baseball 3.

DAVIES, BILL—Dramatics 1, 2; Band 1, 2; Class Play 1, 3, 4; Boys' Glee 2, 3, 4; G Club 3, 4; Operetta 3, 4; Swimming 4; Vice-Pres. Boys' Glee 3; Pres. Boys' Glee 4; Class Vice-Pres. 4; Football 2, 3, 4; Basketball 2, 4.



DUFFY, MARIAN—Yampah Co-editor 4; Pub. 1, 2, 3, 4; Pep 1, 2, 3; Class Play 3; Swimming 3; Nat. Honor Society 4.

DEVER, CHARLES—Dramatics 1; Operetta 1, 3; Current Events 2; Inter-class Basketball 1, 2, 3, 4; Pub. 3, 4; Boys' Glee 3, 4; Class Play 1, 3, 4; G Club 3, 4; Student Council Treas. 1; Student Council 2; Class Pres. 3; Football 1, 2, 3, 4; Basketball 1, 2, 3; Nat. Honor Society 4; Canteen Comm. Treas. 4; Inter-class Baseball 3, 4; Scholastic Team 3; Swimming 4; Yampah Staff 3, 4; Selected for Who's Who in American High Schools.



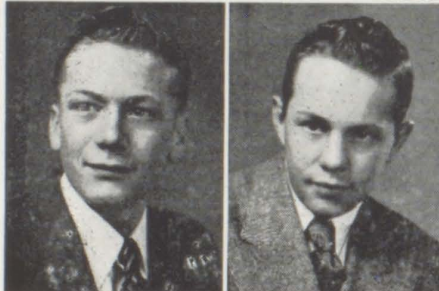
DWIRE, BILL—Pub. 3; Math 4; Orchestra 1.

DONEGAN, SHARON—Athletic 1; Glee 1, 2, 4; Pep 1, 2, 3, 4; Home Ec. 2, 3; Operetta 1, 2, 4; Class Play 3; Pub. 4; Swimming 4; Nat. Honor Society 4; Class Treas. 2; Class Secy. 3; Pres. Pub. 4; Canteen Comm. 4; Asst. Play Manager 4; Inter-class 1, 2, 3, 4; Scholastic Team 3; Yampah 4; Selected for Who's Who in American High Schools.



HAMMERICH, ELOUISE—Athletics 1; Glee 1; Pep 1, 2, 3, 4; Physics Lab. 3; Swimming 2; Home Ec. 2; Math. 4; Operetta 1; Inter-class Basketball 1, 2, 3, 4; Vice-Pres. Class 2; Scholastic Team 3; National Honor Society 4.

DOWNING, EDWARD—Dramatics 1, 2; Boys' Glee 2; Handicraft 3; Commercial 4; Inter-class Basketball 1, 2, 4.



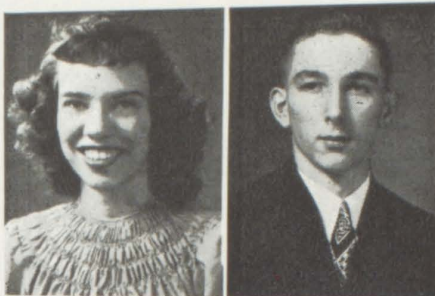
HATCH, DARREL—Handicraft Club 1; Current Events 2; Dramatics 2, 4; Athletic Club 3; Basketball 1.

DRUMMOND, ROBERTA—Band 1, 2; Glee 1, 2; Home Ec 1, 4; Pep Band 1, 2; Handicraft 3; Swimming 2, 3.



HENDERSON, JIMMIE RUTH—Athletic Club 1; Handicraft 2, 3; Dramatics 2; Pep Club 1, 2, 3, 4; Math. 4; Swimming 3; Pres. Handicraft 3; Inter-class Basketball 1, 2, 3, 4.

HUNTLEY, THELMA JANE—Orchestra 1, 2; Athletics 1; Band 1, 2; Pep Club 1, 2, 3, 4; Sec.-Treas. Glee Club 4; Sec. Canteen Comm. 4; Inter-class Basketball 1, 2, 4; Dramatics 2, 4; Home Ec. 2, 3; Glee 3, 4.



LONG, CLIFFORD—Current Events 2; Handicraft 1; Band 1, 2; Boys' Glee 3; Class Play 1, 3, 4; G Club 3, 4; Math 4; Nat. Honor Society 4; Football 2, 3, 4; Basketball 1, 2, 3, 4; Inter-class Basketball 1, 2, 3, 4; Inter-class Baseball 3, 4; Honorary Captain Basketball Team 4; Class Pres. 1, 2; Current Events Treas. 2; Vice-Pres. Student Body 3; Math Pres. 4; Pres. Student Body 4; Selected for Who's Who in American High Schools.

KELLY, BARBARA—Lomita, California 1; Dramatics 2, 4; Handicraft 3; Pep 4; Spanish 1; Bible Club 1; Class Sec. 4.



MACTAVISH, NATALIE—Swimming 1, 2, 3, 4; Dramatic Club 2, 3; Orchestra 1, 2; Pep Club 1, 2, 3, 4; Athletics 1; Majorette 2; Home Ec. 1, 4.

KOENIG, ALICE—Athletic Club 1; Glee 1; Pep 1, 2, 3, 4; Home Ec. 2; Handicraft 3; Operetta 1; Dramatics 4.



McCARTHY, MARY—Glee Club 1.

KOENIG, GLEN—Handicraft 1, 3; Math. Club 4.



McFALL, DONA—Orchestra 1, 2; Dramatics 1, 2; Athletics 1; Band 1, 2, 4; Pep Club 1, 2, 3, 4; Home Ec. 2, 3; Glee Club 3; Pep Band 1, 2, 3, 4; Swimming 3; Inter-class Basketball 2.

LLEWELLYN, DOROTHY—Glee 1, 2; Pep 1, 2, 3; Home Ec. 1, 2; Swimming 2, 3.



MEADOR, JOHN—Salida, Colo. 1, 2; Student Council 1, 2; Class Vice Pres. 2; Canteen Comm. 4; Class Pres. 4; Boys' Glee 3, 4; Operetta 3; Inter-class Basketball 2, 3, 4; Football 2, 3, 4; G Club 4; Swimming 4.

MORRIS, ALICE—Dramatics 1, 2, 4; Current Events 2; Pep Club 2, 3, 4; House Mgr. Jr. Class Play 3; Home Ec. 3; Swimming 3; Home Ec. Sec. 3; Inter-class Basketball 2.



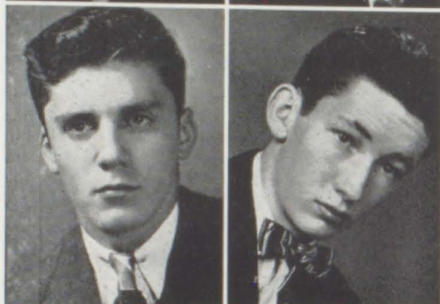
RANDALL, DOUGLAS—Dramatics 1, 2, 3, 4; Handicraft Club 1; Current Events 2; Inter-class Baseball 3, 4; Inter-class Volleyball 3; Swimming 3; Football 2; Inter-class Basketball 3.

NOREN, BARBARA LEE—Athletics 1; Glee 1, 2, 3, 4; Pep Club 1, 2, 3, 4; Dramatics 2, 3, 4; Operetta 1, 2, 3, 4; Class Play 3, 4; Sextette 3, 4; Trio 4; Inter-class Basketball 2; Pep Club Sec. 3; Glee Sec. 3; Prom Queen 3; Music Team 3, 4.



ROCK, KENNETH—Westport H. S. Kansas City, Co. 1; Band 1, 2, 4; Boys' Glee 3, 4; Class Play 3, 4; Orchestra 2; Operetta 3, 4; Boys' Glee Sec.-Treas. 4; Football Mgr. 4.

OSIF, ROBERT—Fall River, Mass. 1; Liberty, N. Y. 2, 3; Class Pres. 1; Gym Club 3; Wrestling 3; Track 3; Glee Club 1, 2, 3, 4; Operetta 4; Football 3, 4; Inter-class Basketball 3.



ROSS, FORREST—Dramatics 1; Athletic Club 3; Publicity 4; Inter-class Baseball 3; Inter-class Volleyball 3; Inter-class Basketball 3; Football 1; Basketball 1.

PEDERSEN, PHYLLIS—Dramatics 1, 2; Glee 1, 3, 4; Pep Club 1, 2, 3, 4; Home Ec. 2, 3; Operetta 1, 3, 4; Class Play 4; Music Contest 4; Inter-class Basketball 1, 2, 3, 4; Glee Club Vice Pres. 4.



ROWE, ERNEST—Dramatics 1; Handicraft 1, 2; Operetta 1; Band 1, 2; Inter-class Basketball 1, 2, 3, 4; Athletic Club 3; G Club 2, 3, 4; Class Play 1; Orchestra 1; Football 1, 2, 3, 4; Basketball 1, 2, 4; Math. Club 4; Inter-class Baseball 3, 4.

PRETTI, BRADFORD—Dramatics 1; Operetta 1, 3; Pub. 2, 3, 4; Current Events 2; Boys' Glee 3, 4; Class Play 1, 3, 4; Scholastic Team 1, 3, 4; Treas. Dramatics 1; Scholastic Medal 1; Class Vice. Pres. 1; Treas. Canteen Comm. 4; Business Mgr. Yampah 4; Yampah 2, 3, 4; Inter-class Basketball 1, 2, 3, 4; Football 1, 2, 3, 4; Basketball 1, 2, 3, 4; Interclass Baseball 3, 4; Nat. Honor Society 4; Selected for Who's Who in American High Schools.



RULE, MILDRED—Orchestra 1, 2; Band 1, 2, 4; Pep Band 1, 2, 3, 4; Dramatics 2; Pep Club 2, 3, 4; Home Ec. 3; Class Play 3; Canteen Chairman 3; Inter-class Basketball 2, 3; Student Council 2; Band Pres. 4.

SANDOVAL, ERNESTINE—Home Ec. 1, 3, 4; Dramatic Club 2; Home Ec. Club Treas. 4.



SNYDER, CECYL—Athletic 1; Pep 1, 2, 3, 4; Glee 1, 2, 3; Dramatics 2, 3, 4; Class Play 3; Operetta 2, 3; Snow Queen 4; Dramatics Vice Pres. 3; Inter-class Basketball 2.

SIDENER, WILLIS—Band 1, 2, 4; Dramatics Club 1, 2, 3, 4; Class Play 1; Basketball 1; Inter-class Basketball 1, 2; Interclass Baseball 3, 4.



STAEHLE, CAROL—Gillette, Wyo. 1; Lewiston, Mont. 2; Dramatics Club 3, 4; Glee 3, 4; Operetta 3, 4; Sextette 3, 4; Class Play 4; Pep Club 1, 2, 3, 4; Swimming 4; Inter-class Basketball 1; Art Club 3.

SIMILLION, JOSEPHINE—Athletic Club 1; Pep 1, 2, 3, 4; Glee 2; Dramatics 2, 4; Home Ec. 2, 3; Operetta 2; Cheerleader 3, 4; Business Mgr. Class Play 3; Class Treas. 1, 3; Class Sec. 2; Inter-class Basketball 1, 2, 4; Swimming 2.



WILLIAMS, GWYNETHA—Orchestra 1; Glee 1, 2; Pep 1, 2, 3, 4; Handicraft 3; Home Ec. 4.

SINGER, ROLLIN—Dramatics 1, 2; Class Play 1; Boys' Glee 2, 4; G Club 2, 3, 4; Physics Lab. 3; Inter-class Basketball 1, 2, 3, 4; Honorary Co-Captain Football Team 4; Football 1, 2, 3, 4; Basketball 1, 2, 3, 4; All-Conference Halfback 4; Glee Pres. 2; Class Vice Pres. 3.



WALCHER, THELMA—Gypsum 1, 2, 3; Home Ec. Club 4.

Senior Class As Freshmen



Back Row : Sininger, Koenig, Sidener, Bostleman
 Third Row : Bukowich, Colohan, Wilson, Long, Pretti, Downing
 Second Row : Llewellyn, Williams, M. Wilson, Henderson, Duffy, Huntley, Donegan
 First Row : Koenig, MacTavish, Almgren, Drummond, McCarthy, Jones



Back Row : Shaw, Dwire, Rowe, Matney
 Third Row : MacQuarrie, Burnett, Brockway, Bratton, Ross
 Second Row : McFall, Jarvis, Benedeck, Noren, Morris, Williams
 First Row : Simillion, Snyder, Mrs. Almgren, Pedersen, Rule, Hammerich

Senior Class History

On September 4, 1944 forty-nine bewildered Freshmen enrolled at G.C.H.S., presumably to further their education. Now four years later forty-nine wiser Seniors are preparing to leave their Alma Mater. In four years they accomplished much and reached many goals but at the same time realize that there is much more in life yet to learn. It was a binding class spirit that enabled them to grasp the successes that others missed. When Frosh, the boys took third place in Inter-class Basketball, upsetting the Seniors while the Frosh girls took the coveted school championship, an honor that they have held throughout their entire high school days. Scholastically the class ranked as high as any in high school, having more students on the Honor Roll than any other class. Even as Freshmen they showed their active spirit in extra-curricular activities. Norma Benedeck as a Frosh was elected a cheerleader. The dependable officers of this ambitious class were Clifford Long, President; Brad Pretti, Vice President; Josephine Simillion, Secretary; Jentra Jarvis, Treasurer; Norma Benedeck, Class Representative; Charles Dever, Treasurer of the Student Council.

As Sophomores forty-two students showed the school their initiative to get what they wanted as they handily defeated the Frosh in the annual struggle. In the previous year they had been narrowly defeated. Again they lead the other classes for scholastic achievements on the Honor Roll. They were no bookworms though, for the class was represented in nearly every activity. Nine boys represented the class in Football and Basketball; Rollin Slinger lettered on the first squad in Football. In Inter-class Basketball the boys took second place after narrowly losing their final game to the Juniors. The girls again won over all the other classes. At the end of the year the class presented a school party in the clever form of a night-club opening. Class officers for this second year were Clifford Long, President; Jentra Jarvis, Vice President; Sharon Donegan, Treasurer; Josephine Simillion, Secretary; Charles Dever, Class Representative; and Mildred Rule, Secretary of Student Council.

The Junior year proved to be the most important year the class

Senior Class History

had yet struggled through. It took the combined talents of fifty lively teen-agers to accomplish what they did. The Football team, comprised mostly of Seniors and Juniors were Western Slope B Class runner-ups. Paul Amichaux and Kip Long represented the class on the varsity basketball team that went into the State Semi-finals, a feat never before attained by a Glenwood Team. Late in the year the play "College Daze" was successfully presented to a large enthusiastic crowd. Near the time of graduation ceremonies the Juniors honored the Seniors with an elaborate Prom and Luncheon. The Juniors were proud to present this tribute to the class of "47", a class with whom they had shared both friendly companionship and fierce but good-natured rivalry. The able officers who led their class through this tumultuous year were Charles Dever, President; Rollin Sininger, Vice President; Sharon Donegan, Secretary; Josephine Simillion, Treasurer; Paul Amichaux, Class Representative; and Clifford Long, Student Body Vice President.

There were still greater successes to come in the Senior year as the class rolls showed forty-nine members returning to G.C.H.S. To give the class rolls showed forty-nine members returning to G.C.H.S. To give letics, scholastics, social life, and other activities. The football team, made up mostly of Seniors, took the Colorado River Valley A championship and lost the Western Slope crown to Delta in a very close game. In December the Christmas Formal was sponsored by the class. There were six Seniors on the basketball team that copped the Western Slope Championship at Delta, the first time a Glenwood team had ever achieved such heights. Paul Amichaux and Kip Long were both chosen on All-Tournament teams at Delta. In the Spring Music Festival several Senior girls, Barbara Lee Noren, Norma Benedeck, Phyllis Pedersen and Carol Staehle received high ratings for their vocal numbers. On April 30 the Seniors presented "Hobgoblin House", a mystery-comedy. The play was quite successful and the profits obtained from it were used to engineer the Seniors annual Sneak Day. For their "Class Night" program a travel talk was cleverly enacted. A school baseball team was formed in the Spring and many of the Seniors distinguished themselves in this sport.

Junior Class



Top Row : Fitzgerald, Gibbs, Nordberg
First Row : Johnson, Read, Barz

CLASS OFFICERS

Edward Gibbs, President
Twylla Read, Vice President
Marcus Nordberg, Secretary
Jack Fitzgerald, Treasurer
Joyce Barz, Student Council Representative
Joyce Johnson, Vice President of Student Council

CLASS SPONSOR

Ann Guth

Junior Thumbnail Sketches

Joyce Barz	Just and blithe
Harvey Bellm	Hearty and brawny
Betty Jean Blue	Benign and bland
Sylvia Brown	Sagacious and Benevolent
Marjorie Bukowich	Mirthful and beaming
Henry Coll	Hilarious and cocky
Ernest Donegan	Energetic and democratic
Darlene Duffy	Delightful and dexterous
Harold Dwire	Humorous and diligent
Jack Fitzgerald	Jolly and forthright
John Flynn	Jaunty and factious
Edward Gibbs	Eminent and genial
Louise Halford	Lively and happy
Freda Hansen	Frank and honest
Annette Heuberger	Amiable and helpful
Leo Jammaron	Laconic and jocular
Joyce Johnson	Jocund and judicious
Sally Lamkin	Sociable and leisurely
Thomas Lewis	Tranquil and laudable
Daun McGonegal	Dependable and meritorious
Helen Noblitt	Harmonious and neat
Marcus Nordberg	Matchless and nonchalant
Frances Peck	Facile and peaceful
Twylla Read	Thoughtful and reserved
Earl Sidener	Equitable and serviceable
Duane Switzer	Discreet and sincere
Don Vanderhoof	Distinctive and vigorous
Barbara Waterman	Beneficent and whimsical
James Wilkie	Jocose and willing
Irene Weinrich	Interested and wholesome

Junior Class History

In the fall of 1945, thirty-seven new students, filled with expectation of exciting days ahead and scholastic goals, entered G.C.H.S. They lost the Frosh-Soph struggle by a narrow margin. Under the sponsorship of Mrs. Almgren, the class presented the annual Christmas program.

Thirty-two students enrolled during the sophomore year, twenty-six of which were of the original class. Miss Margaret Egan was class sponsor. The following class officers were elected: Jack Fitzgerald, President; Harry Shetlar, Vice President; Freda Hansen, Secretary; Robert Todd, Treasurer. Don Vanderhoof and Joyce Barz served on the Student Council.

This year only thirty students enrolled, the Junior Class being the smallest in high school. Class officers elected were Edward Gibbs, President; Twylla Read, Vice President; Marcus Nordberg, Secretary, Jack Fitzgerald, Treasurer. Joyce Johnson was elected Vice President of the Student Council, and Joyce Barz served as Representative. Under the management of Mrs. Ann Guth, the Junior Class presented a three-act comedy entitled, "Moonlight for Herbert". The traditional Junior-Senior prom and luncheon were successfully given.



Third Row: Goin, Flynn J., Donegan E., Lewis T., Dwire H.
 Second Row: Wilkie J., Jammaron, Switzer D., Sidener E., Gibbs, Bellm, Todd
 First Row: Nordberg, Fitzgerald, Guth, Coll, Vanderhoof



Third Row: Bukowich M., Halford L., Heuberger
 Second Row: Blue, McGonegal D., Peck, Noblett H., Duffy D., Waterman
 First Row: Earz, Kemp, Guth, Hansen, Brown S.

Sophomore Class



Top Row: Letey, Igo, Simillion
First Row: Baker, Bukowich, Halford

CLASS OFFICERS

Pete Bukowich, President
Mary Lou Halford, Vice President
John Letey, Secretary
Norman Simillion, Treasurer
Thomas Igo, Student Council Representative
Virginia Baker, Student Council Secretary

CLASS SPONSOR

Cynthia Stapp



Third Row : Heuschkel, Tonso, Letty, Heisler, Root, Paine
 Second Row : Dever B., McFall L., Anderson, Binkley, Gamba, Mitchell
 First Row : Bukowich P., Igo, Overlin, Stapp, Pedersen S., Rowe G., Batchman



Third Row : Gilmore, Swenson, Schutte, Gardner E., Gardner E., McDonald, Baker
 V., Halford M.
 Second Row : Schroder, Sidener J., Locke, Cator, Henry, Claycomb, Rogers
 First Row—Gilstrap, Brockway J., Garnett, Stapp, Fulbright, Amichaux J., Doose
 Cossins

Sophomore Class History

On September 23, 1946, fifty frightened but hopeful frosh entered G.C.H.S. There was no Frosh-Soph struggle because school started late. Class officers were Arlen Gallagher, President; Severen Pedersen, Vice President; Patty Henry, Secretary; Edna Koenig, Treasurer, and Virginia Baker, Student Council Representative. Mrs. Almgren was class sponsor. A number of the boys went out for athletics.

In the fall of 1947, forty-four Sophomores returned for another year of hard work. Of these, thirty-eight were of the original class, six were newcomers and one entered during the year and one left.

The Sophomore class officers were Pete Bukowich, President; Mary Lou Halford, Vice President; John Letey, Secretary; Norman Simillion, Treasurer; Thomas Igo, Student Council Representative; Virginia Baker, Student Council Secretary. Mrs. Stapp was class sponsor. A large number of the boys went out for basketball and football. The Sophomore girls and boys had a very successful year with their inter-class basketball teams.

The Sophomore class had a hayride during the year. After an enjoyable year the class is looking forward to being upper classmen.

Sophomore Sobriquets

Charles Anderson	Happy-Go-Lucky
Joyce Amichaux	Good Sense
Virginia Baker	Cute Redhead
Virgil Binkley	Western Fan
Joanne Brockway	Home Economist
Pete Bukowich	Dancing Expert
Bertie Cator	Miss Athlete
Mary Claycomb	Joker
Jennie Cossins	Miss Energetic
Bertram Dever	Mighty Mite
Patty Doose	Miss Doer
Sue Fellner	Miss Sincerity
Beatrice Fullbright	Friendly Type
Jerry Gamba	Nice Guy
Gloria Garnett	Quiet Miss
Eleanor Gardner	Likable Girl
Ellen Gardner	Friendliness
Marjorie Gilmore	Smiles
Lucylle Gilstrap	Miss Happiness
Mary Lou Halford	Miss Basketball
Donald Heisler	Mr. Atlas
Patty Henry	Petite Miss
Donald Heuschkel	Mr. Brawn
Thomas Igo	Mr. Personality
Gary Jones	Quiet Fellow
Edna Koenig	Honor Student
John Letey	Mathematician
Esther Locke	Demure Blonde
Joan McDonald	Giggles
La Van McFall	Go Getter
Ray Mitchell	Mysterious Man
Frank Overlin	Mr. Much-in-little
John Paine	Mr. Talker
Severen Pedersen	Man About Town
Don Pumel	Romeo
Letty Rogers	Miss Silence
Robert Root	Lanky Athlete
George Rowe	Lightning
Phyllis Schroder	Cute Kid
Alice Schutte	Miss Personality
Jewel Sidener	Miss Willingness
Norman Simillion	Mr. Basketball
Dallas Swenson	Miss Affability
Jerome Tonso	Good Humor

Freshman Class



Top Row: Bolitho, Patch
First Row: Mann, Baker, Barnes

CLASS OFFICERS

Bill Colohan, President
Jaymie Baker, Vice President
Bill Bolitho, Treasurer
Norma Barnes, Secretary
Donald Patch, Student Council Treasurer
Carol Mann, Student Council Representative

CLASS SPONSOR

Lila Almgren



Third Row: Duffy G., Colohan B., Lewis R., Bolitho, Baker J.
 Second Row: Gardner H., Bair, Henderson B., Shelton, Montover, Patch, Werking,
 Lamkin P.
 First Row: Simillion R., Juhan, Burnett E., Almgren, Bigum, Morris N., Switzer C.



Third Row: Dwire J., Hatch H., Eruner, Richardson, Verdick, Hoeme, Amichaux J.,
 Kramer
 Second Row: Simpson, Sandoval D., Almgren, Flynn M., Mann, Wilson, Horn,
 Holmes, Smith
 First Row: Drake, Barnes, McGonegal A., Newhouse, Almgren, Zastrow, Mulkey,
 Noblett, Zanella

Freshman History

This year the class of "51" entered the doors of G.C.H.S. and began their four years of high school education.

The freshmen fought a close battle in the annual Frosh-Soph Struggle. The final score was 4-3 in the Sophomores' favor, Battle-scarred and bruised; the Frosh, led by I. Drake and D. Patch, appeared in the grand march at the Skirt and Sweater Dance.

Those who were elected to hold officer were B. Colohan, President; J. Baker, Vice President; B. Bolitho, Treasurer; N. Barnes, Secretary; D. Patch, Student Council Treasurer; C. Mann, Student Council Representative.

The fellows who went out for football were as follows: B. Colohan, B. Bolitho, D. Patch, P. Lamkin, D. Werking, S. Montover. Those who went out for basketball were: R. Lewis, B. Colohan, B. Bolitho, J. Baker. One Frosh, B. Colohan, made the main string in basketball.

The Freshman names that consistently appeared on the honor roll were as follows; B. Smith, G. Duffy, T. Almgren, S. Verdieck, M. Flynn, I. Wilson, B. Zastrow, C. Mann.

In December the Freshmen combined their talent and gave the traditional Christmas assembly for the student body. Again in May they put on another program.

Freshman ABC's

Ambitious Almgren
Amiable Amichaux
Bashful Bair
Brisk Bolitho
Brawney Baker
Bonny Barnes
Breezy Bigum
Blond Burnett
Carefree Colohan
Determined Drake

Devoted Duffy
Docile Dwire
Fair Flynn
Gay Gardner
Humorous Halliburton
Helpful Hatch
Hardworking Henderson
Hospitable Hoeme
Honest Holmes
Happy-go-lucky Horn

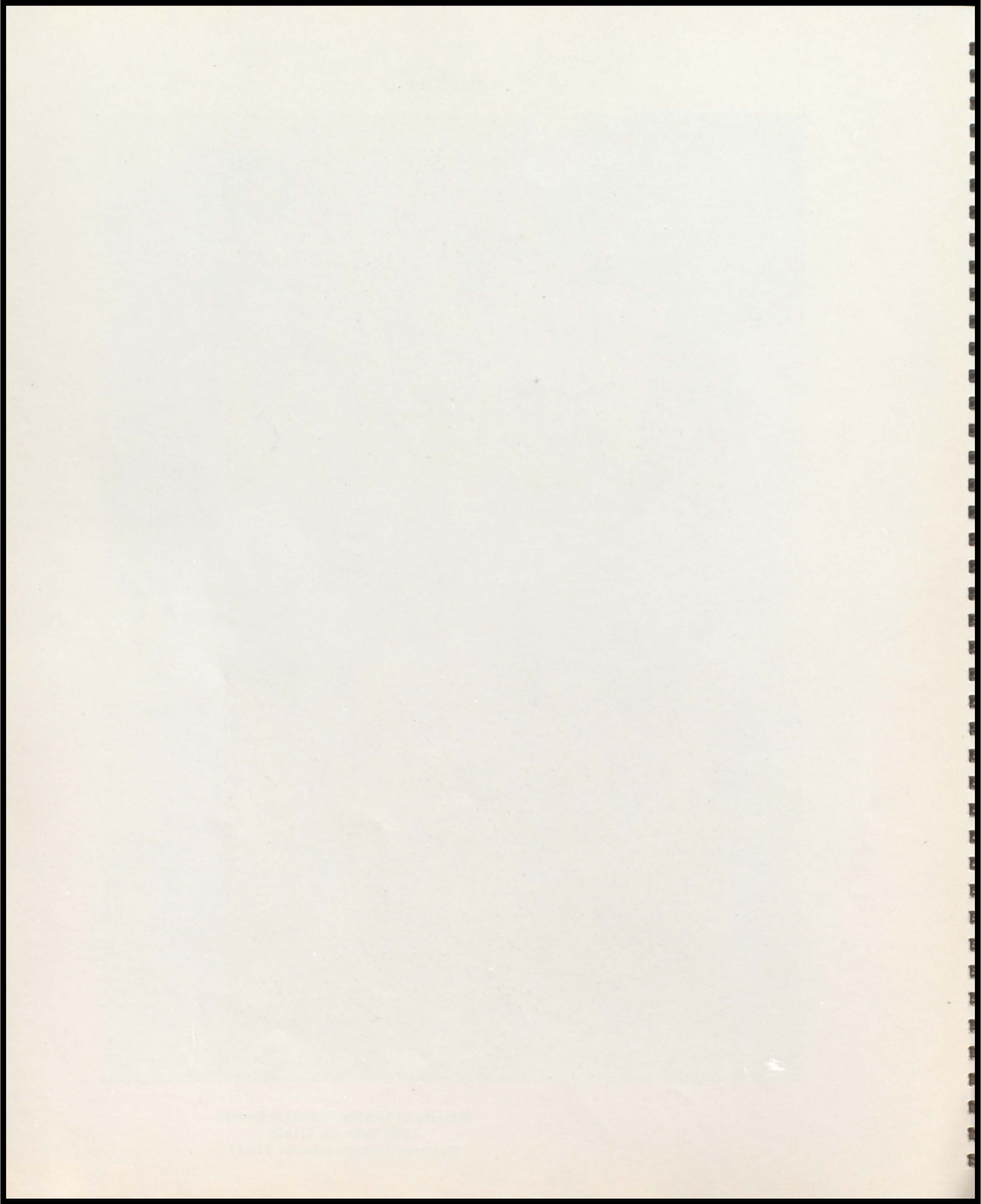
Jocund Juhan
Keen Kimbrough
Kindly Kramer
Loyal Lamkin
Likable Lewis
Modest Mann
Merry McGonegal
Masculine Montover
Mild Morris
Mischievous Mulkey

Natty Newhouse
Nimble Noblitt
Persistent Patch
Reliable Richardson
Spunky Sandoval
Sociable Shelton
Smiling Simillion
Sincere Simpson
Snappy Smith

Small-fry Switzer
Timid Tasso
Versatile Verdieck
Witty Werking
Willing Wilson
Wholesome Wilkie
Zestful Zastrow
Zealous Zanella

Activities





Publicity Club



Third Row: Ross, Colohan, Nordberg, Dever, Pretti
Second Row: Werking, Sutherland, Paine, Gibbs, Read, Duffy M., Mann
First Row: Johnson, Schutte, Stapp, Benedeck, Donegan S.

The membership of this year's Publicity Club was limited to eighteen student journalists. Their duties included the preparation of the weekly "We The Students" column and the composition of the Yampah.

Scholastic Team



Third Row: Pretti, Dever, Nordberg, Igo
Second Row: Koenig, Heuberger, Rule, Hammerich, Johnson
First Row: Wilson MacTavish, Benedeck, Donegan, Flynn, Almgren

Fifteen able students represented G.C.H.S. in the state scholastic contests. A number of other schools in the region met at Glenwood Springs for the contest on April 17, 1948.

Future Homemakers' Club



Third Row: Locke, Gilmore, Drummond, Tasso
Second Row: Simpson, Horn, McGonegal D., Sandoval D.
First Row: Sandoval E., MacTavish, Guth, Sidener J., Williams

The members of this club, under the direction of Mrs. Ann Guth, carried on many activities during the year. The members raised money by selling refreshments at games and were helpful in entertaining hospital patients.

Canteen Committee



Two administrations of the Canteen Committee took charge of the weekly dances during the school year. The various dances chaperoned by faculty members and parents provided many good times for the students.

Boys' Glee Club



Third Row: Pedersen S., Rowe G., Colohan B., Donegan E., Coll, Bolitho
Second Row: Bukowich F., Simillion R., Bigum, Baker J., Bukowich P., Osif, Burnett E., Henderson B., Morris N., Switzer C.
First Row: Pretti, Dever C., Meador, Brockway G., Guadnola, Rock, Sininger, Davies

As a tri-weekly activity, the Boy's Glee Club became an accredited activity in its second year of existence. With the Girls' Glee Club, the boys presented the operetta "The Toreadors" under the direction of Miss Guadnola.

Girls' Glee Club



Among the many activities of the Girls' Glee Club were the presentation of the operetta "The Toreadors" and their participation in the annual band tournament in Grand Junction.

Student Council



Second Row: Igo, Long, Patch

First Row: Johnson, Baker V., Barz, Mann, McFall D.

The student governing body of the school had a great variety of duties in the past year. Among these were the sponsorship of numerous school dances and assembly programs. The officers were Clifford Long, President; Joyce Johnson, Vice President; Virginia Baker, Secretary; Donald Patch, Treasurer. Class representatives were Dona McFall, Senior; Joyce Barz, Junior; Tommy Igo, Sophomore, and Carol Mann, Freshman.

National Honor Society



To be chosen as a member of the National Honor Society is the highest honor that a Senior can receive. Character, scholarship, leadership, and service are the phases of school life upon which the selections are based. Fifteen per cent of the class are eligible for this honor.

Band



For the first time in two years, the band again became active as an accredited subject. Under the direction of Mr. Baillie, the band members participated in a number of rallies, assemblies, and concerts.

Dramatic Club



Although the main aim of the club was to learn the fundamentals of acting such as diction and poise, the numerous programs presented by the members provided lively entertainment for the entire school.

Math Club



Third Row: Fitzgerald, Dwire B., Long, Koenig G., Rowe E.
Second Row: Binkley, Flynn J., Todd
First Row: Hansen, Barz, Almgren, Koenig E., Fellner

Under the guidance of Mrs. Almgren, a group of aspiring mathematicians learned the fundamentals of logarithms and the slide rule in the Math Club. The club was originated this year as an accredited activity.

Music Team



The school was ably represented at the solo contest held in Glenwood on March 20, 1948 by several talented musicians who gained honors both in vocal and instrumental numbers.

Dramatics



SENIOR CLASS PLAY

April 30, 1948, the Senior class presented their annual play. This year's production entitled "Hobgoblin House" was an exciting combination of comedy and mystery. The plot took place in a deserted country mansion where Miss Priscilla Carter, a maiden aunt, her two nieces, and her servants find mystery and suspense. The expert direction of Mrs. Rader and the work of the entire class made the production a success.

Cast

Darius Krupp	Bill Davies
Miss Priscilla Carter	Carol Staehle
Marian Carter	Phyllis Pedersen
Jill Carter	Barbara Lee Noren
Frank Harlow	Charles Dever
Jack Loring	Clifford Long
Susan Parkins	Betty Chase
Henry Goober	Bradford Pretti
Delilah Worts	Norma Benedeck
Bluebeard Bronson	Kenneth Rock
Bill Wilkins	Desmond Bertholf
Patricia Arnold	Thelma Huntley
The Headless Phantom	?????

Junior Class Play



The comedy "Moonlight for Herbert" was presented by the Junior class on April 9, 1948. The plot revolved around a child prodigy, Herbert, and his family. The predicaments which Herbert and his pal Vincent got into provided hilarious entertainment. The entire class cooperated under the direction of Mrs. Guth to make the play both a dramatic and a financial success.

Cast

Beverly	Sally Lamkin
Margaret Rains	Annette Heuberger
Miss Hepplewhite	Marjorie Bukowich
Mrs. Ellington-Lewis	Twylla Read
Felix Heidler	Henry Coll
Vincent Farnsworth Jr.	Edward Gibbs
Herbert	Marcus Nordberg
Sidney Rains	Don Vanderhoof
Julia Arnold	Sylvia Brown
Jean Bressart	Joyce Johnson
Vincent Farnsworth Sr.	Thomas Lewis
Mrs. Tracy	Joyce Barz
Mr. Tierney	Jack Fitzgerald

Society

JUNIOR-SENIOR PROM AND LUNCHEON

The annual Junior-Senior Prom was held on May 10, 1947, at the Grade School auditorium. The general theme of the activity was Davy Jones' Locker. In the center of the room was constructed the cabin of a ship; on the stage the Junior workers placed a glittering ship's wheel. The central floor was roped off and surrounded by ocean waves and many marine animals. Music was furnished by Jeep Rager. Barbara Lee Noren and John Paul Schutte led the traditional Grand March. Refreshments were served by the Junior Mothers.

The Junior-Senior Luncheon, held in the Grade School auditorium, had the same decoration as the formal. The guests were served a turkey dinner with all the trimmings and strawberry short cake for dessert. Barbara Lee Noren and Phyllis Pedersen sang solos.

COMMENCEMENT EXERCISES 1947

Processional	Alice May Schutte
Invocation	Rev. J. D. Hargis
Piano Solo "Prelude In C Sharp Minor"	Billy Joyce Simpson
Clarinet Solo "Concerto-Opus 107"	John Paul Schutte
Commencement Address "How To Be A Failure"	Ernest H. Henrikson
Flute Solo "In A Monastery Garden"	Eugenia Mussatt
Presentation of Class	H. J. Igo
Presentation of Diplomas	Mrs. Alma Harris
Presentation of Scholarships	M. R. Moorhead
Benediction	Rev. W. O. Richards
Recessional	Alice May Schutte

BACCALAUREATE EXERCISES 1947

Processional	Alice May Schutte
Invocation	Rev. W. O. Richards
"The Sweet of the Year"	Turner
"The Bells of Saint Mary's"	Adams

Girls' Glee Club

Scripture Reading	Rev. J. D. Hargis
"The Green Cathedral"	Hahn
"To A Wild Rose"	MacDowell

Girls' Sextet

Baccalaureate Sermon	Rev. J. Ian Fraser
"Dedication"	Roberts
"Love's Old Sweet Song"	Molloy

Boys' Glee Club

Benediction	Rev. C. E. Kessler
Recessional	Alice May Schutte

SKIRT AND SWEATER DANCE

On Friday evening September 5, 1947 the annual Skirt and Sweater Dance, to welcome the freshmen, was held in the high school gymnasium. Coke was served throughout the evening and sandwiches were served by the Mothers Club. The juke box was operated by Mr. Sharp. The Grand March was held for the freshmen during the evening.

SADIE HAWKINS' DANCE

"Lil Abner" and "Daisy Mae" once again sported "Dogpatch" costumes at the annual Sadie Hawkins' Dance held November 21, 1947, at the G.C.H.S. gym. The girls, as is customary, produced unique corsages and the boys waited patiently for assistance with their wraps. "Marryin' Sam" Belm presided over the affairs of the evening. Bradford Pretti and Cathy Brown were awarded prizes for the best costumes. After refreshments were served by the Mothers' Club, the fair sex escorted their dates to their homes in "Dogpatch" Glenwood Springs.

CHRISTMAS FORMAL

Sparkling Christmas trees, snow-crowned decorations, and Santa's sleigh formed the setting for the Christmas Formal of '47, held in the Grade School gymnasium. On December 23, over fifty couples enjoyed the evening dancing to the music of the Armand DeBeque Orchestra. During intermission refreshments consisting of punch, homemade candy, and cookies were served by the Mothers' Club. At the main event of the evening, Cecyl Bea Snyder, attended by Betty Chase, Norma Benedeck, Josephine Simillion and Barbara Lee Noren, was crowned Snow Queen by Mrs. R. Rader. Cecyl Bea Snyder and her escort led the Grand March and began the evening of gaiety.

HALLOWEEN DANCE

On the Friday during Halloween week, the Canteen Committee sponsored a large Halloween Dance. Held in the basement of the Legion Hall, the decorations carried out the Halloween theme with black cats and witches hung from the walls. Skits and songs were presented for the entertainment of the students. Mr. and Mrs. Pat Bell, Mrs. Don Chambers and Mr. and Mrs. Mulkey chaperoned the dance. Mrs. Ray Hopkins acted as fortune teller.

VALENTINE DANCE

On February 15th a large post-game dance after the Glenwood-Rifle game was held at the high school. The Valentine theme was apparent with large red hearts covering the baskets, and red and white streamers interwoven across the streamers. The Mother's Club and the Garden Club provided refreshments. Mrs. Lamkin, Mrs. Bell and Mrs. Swenson sponsored the dance.

LATIN BANQUET

One might have thought the "clock of time" had been turned back and that he was living in the first century had he happened to look in upon the preparations for the Latin Banquet. The lives of the poor slaves, known to the modern world as members of the Latin I class, were made miserable by their high and powerful masters, the Latin II class members.

Tom Igo, rich landowner, was host of the occasion. Among his famous guests were such personalities as Claudia (Joyce Johnson), Ovid (John Paine), the Empress Livia (Edna Koenig), and Horatius Codes (Donald Heisler).

The traditional menu of spaghetti and meatballs was served.

For entertainment the lords demanded musical numbers and dances from their slaves. A few of these were Marilyn Mulkey, who danced to "Tabu"; Bill Colohan, who sang "Too Fat Polka" translated into Latin; Berta Lee Smith and Margaret Noblitt, who sang "Near You" in Latin; and Audre McGonegal, Marilyn Mulkey and Douglas Bigum, who sang "Four Leaf Clover."

LEAP YEAR DANCE

Once every four years, the students of G.C.H.S. attend the Leap Year Dance. This year the dance, given by the Canteen Committee, was one of the highlights of the season. The Grade School auditorium, where the dance was held, was gaily decorated with multicolored streamers in every corner. Of course, because it was a Leap Year Dance, the fair damsels of the school chose their favorite fellows and escorted them throughout the evening. The large number of students who attended the dance enjoyed coke and a box luncheon while watching the entertainment presented by members of the Canteen Committee.

CANTEEN DANCES

Throughout the school year of 1947-1948 many canteens were held for the benefit of G.C.H.S. students. These canteens were arranged and directed by student members of the canteen committee. Dancing and a variety of games were furnished by the various classes. The canteens were held in the basement of the Legion Hall and in the grade and high school gyms.

VOLUNTEER ASSEMBLY

A volunteer assembly, sponsored by the Student Council, was held February 18, 1948. The student body thoroughly enjoyed the entertainment offered by the newly discovered talent. Each performer chose his own selection for the program. Barbara Lee Noren, Margarete Noblitt, Earnest Donegan, Henry Call, Dwane Switzer, Betty Chase, Carol Staehle, Thelma Huntley, Tommy Igo, LaVan McFall and Frank Overlin were those who participated in the program. Several sophomore boys and girls presented a short skit.

SAFETY FILMS

Through the combined efforts of the Student Council and the directors of the school, the student body of G.C.H.S. was fortunate in having State Patrolman Yarberry show some films on safety. These films, concerned mostly with the safety of driving, were interesting, informtive, and definitely beneficial for the students.

FRESHMAN CLASS PLAY

On the Friday before Christmas vacation, the freshman class presented their yearly program. The freshmen, under the direction of Mrs. Almgren, surprised the student body with unknown talent. Several of the freshmen gave readings, sang songs, and presented skits. The entire student body joined in singing some old songs. A play called "How Many Miles from Christmas" was also given. Near the end of the program several couples performed an old-fashioned square dance.

The freshman class gave another assembly May 10 of a novelty type, including impersonations and a play.

Athletics



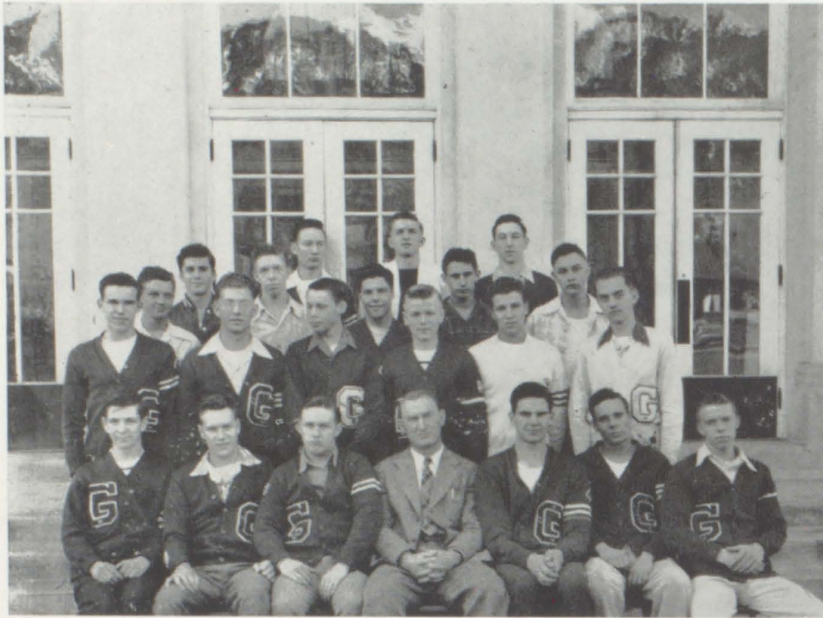
Nicholas Stubler: In his second year as coach of the Demons, Nick successfully held up his reputation as "the best coach Glenwood ever had".

Cheerleaders and Mascot



Schutte, Nikki Stubler, Simillion, Benedeck

"G" Club



The G Club is an organization composed of those boys of G.C.H.S. who have earned a letter or letters for participation in either football or basketball. Two hundred points are needed for the first letter, three hundred for the second and third. Seventy-five per cent of these points must come from actual playing. This is truly an honorary athletic organization.

Pep Club



The Pep Club of G.C.H.S. was sponsored by Miss Boyd. The cheerleaders were Norma Benedeck, Josephine Simillion and Alice May Schutte; and Annette Heuberger was the club treasurer. Before every football game, the club girls decorated the goal posts with the school colors. As an extra activity each member sold Demon pen and Pencil sets to the students and faculty. The Pep Club prepared special skits for the basketball team before they went to the Delta and Denver tournaments. This program was presented to the student body on "Red and White" day.

1947 Football Squad



Athletic Who's Who

Name	Class	Football	Basketball
Amichaux	Senior	2	2
Brockway	Senior	2	0
Bukowich	Senior	1	0
Coll	Junior	1	0
Colohan B.	Freshman	0	1
Colohan C.	Senior	1	0
Davies	Senior	2	1
Dever	Senior	2	0
Dcnegan	Junior	2	0
Long	Senior	2	2
Meador	Senior	1	0
Nordberg	Junior	0	2
Osif	Senior	1	0
Pretti	Senior	2	1
Rowe, E.	Senior	2	1
Rowe, G.	Sophomore	1	1
Simillion	Sophomore	0	1
Sininger	Senior	3	1
Vanderhoof	Junior	1	1

1947 Football Standings

Conference Standings

Team	Won	Lost	Tied	Per Cent
Glenwood	3	0	2	.800
Rifle	2	1	2	.600
Fruita	1	2	0	.333
Central	0	3	0	.000

Conference Scores

Glenwood 0 Rifle 0 at Rifle
 Glenwood 18 Fruita 6 at Glenwood
 Glenwood 25 Central 0 at Central

Armistice Day Playoff

Glenwood 0 Rifle 0 at Glenwood

Final Playoff

Glenwood 2 Rifle 0 at Junction

Non-Conference Scores

Glenwood 0 Grand Junction 19 at Junction
 Glenwood 0 Hotchkiss 7 at Hotchkiss
 Glenwood 19 Palisade 6 at Glenwood
 Glenwood 25 Meeker 13 at Glenwood
 Glenwood 0 Craig 0 at Craig
 Western Slope Championship
 Glenwood 0 Delta 6 at Glenwood

Summary

	W.	L.	T.	Pts.	Opp. Pts.	Pct.
Conference	3	0	2	43	6	.800
Non-Conference	2	3	1	44	51	.416
Total	5	3	3	87	57	.590

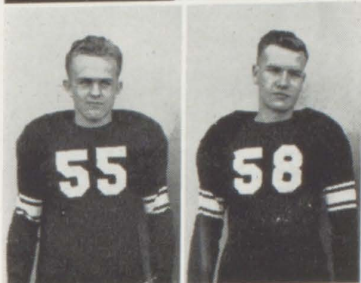
Football Personalities

Paul Amichaux—Dependable right tackle, one of the finest linemen in G.C.H.S., all-conference tackle and honorary co-captain of the team.



Charles Colohan—A Senior reserve quarterback, he was adept at ball-handling and snappy southpaw passes.

Harvey Bellm—Harv was a block of stone in the left guard position. His size made him hard to handle.



Bill Davies—Easy-going left guard, Bill shone brilliantly in offensive and defensive roles.

Gene Brockway—A very capable reserve, Gene earned his second letter for fine work.



Charles Dever—First string right guard, he was one of the most dependable, experienced linemen.

Fred Bukowich—Bucky lettered as a reserve wingback and showed plenty of speed.



Ernest Donegan—Bud handled left tackle with remarkable ease. His smashing defensive play put him on all-conference second team.

Henry Coll—Hank's speed and size plus aggressiveness gave him a second all-conference rating as a tailback.



Donald Heuschkel—A hefty tackle, he will be invaluable to future teams.

Bill Colohan—A Frosh halfback, he shows promise of becoming a great back.



Thomas Igo—Center of the second string line, he showed spirit and aggressiveness throughout the season.

John Letey—As second team left tackle, Johnny gained invaluable experience for next year.



Bradford Pretti—Brad's outstanding play on both offense and defense won him first string center's assignment.

Thomas Lewis—In his first year, he ably filled in at the end position.



Ernest Rowe—A tall, rangy end, Ernie specialized in breaking up interference and still making the tackle.

Clifford Long—Kip's running prowess was surpassed only by his superb defensive play.



George Rowe—Stocky sophomore fullback, he could always be relied upon when a few yards were needed.

John Meador—Snaring passes was John's specialty and he tackled and blocked with the best in the league.



Norman Simillion—Buzz's drive and pass-catching ability will show up on next year's squad.

Marcus Nordberg—His all-around talents at right end made him an able sub.



Rollin Slinger—He justly earned the titles, Co-Captain, All Conference Halfback, and Triple-threat-backfield ace.

Robert Osif—A hard-driving guard, Bob showed his stuff whenever he was needed.



Donald Vanderhoof—Don's tricky ball handling from the quarterback spot fooled many an opponent.

Kenneth Rock—With loyalty and spirit, Kenneth carried out his duties as manager to the minutest detail.



Football Recapitulation

Under Coach Stubler, the Demon gridiron squad enjoyed a very successful season, reaching the Western Slope Championship game. A very full season left the Demons with five wins, three losses, and three ties.

In the first game at Grand Junction, the Tigers took to the air to pound out a 19-0 victory over the inexperienced Demons. The following weekend, the Red and White lost a tight 7-0 contest to Hotchkiss on the latter's field. Palisade became the first victims of the potentially strong Demon eleven, falling 19-6 on the victor's field. A few bright spots began to show, including Sininger's tricky running and the strong defensive play of Donegan, Amichaux and Davies.

The first conference game of the season resulted in a scoreless tie with the Demon's old rivals, the Rifle Bears. Meeker with their ace back, Duane Rooks, scoring two touchdowns, could not stem the Demons and the Cowboys fell 25-13. A conference victory was notched as Fruita fell 18-0. The long runs of Sininger and Coll and the superb defense of the Demon line achieved this win.

Another scoreless tie was put in the books when Glenwood travelled to engage a strong Craig team. Central proved no match for the now synchronized Demon offense and they fell 25-0. Long's defensive and offensive play was a standout in this encounter.

In the annual Armistice Day game, with Rifle this time to decide the conference crown, another scoreless tie further entangled the fine record of the Demons. A week later, Grand Junction was the site of still another Glenwood-Rifle fray. After a hectic, see-saw battle, the score was again tied as the final gun sounded. This time, however, an over time period settled the league standings. The ball was placed at mid-field and each team received six downs. The position of the ball at the end of this dozen plays determined the winner. Since the ball was found to be resting on the Rifle 35-yard line at the close, the Demons were given the victory 2-0.

In the Western Slope Championship game, Delta eked out a 6-0 victory over the locals. It was a tight game and was won only by superior weight of numbers.

1948 Basketball Standings

	Won	Lost	Per Cent
Glenwood	5	1	.833
Central	5	1	.833
Fruita	2	4	.333
Rifle	0	6	.000

Conference Scores

Glenwood 42 Central 18 Here
 Glenwood 28 Rifle 22 There
 Glenwood 36 Fruita 25 Here
 Glenwood 27 Central 29 There
 Glenwood 39 Rifle 26 Here
 Glenwood 40 Fruita 22 There

Non-Conference Scores

Glenwood 17 Palisade 26 There
 Glenwood 32 Palisade 21 Here
 Glenwood 19 Leadville 30 There
 Glenwood 21 Canon City 23 There
 Glenwood 44 De Beque 16 Here
 Glenwood 48 De Beque 39 There
 Glenwood 21 Meeker 13 There
 Glenwood 30 Meeker 20 Here
 Glenwood 28 Grand Junction 19 Here
 Glenwood 27 Grand Junction 30 There
 Glenwood 27 Eagle 18 Here
 Glenwood 34 Eagle 19 There

Delta Tournament

Glenwood 43 Montrose 22 at Delta
 Glenwood 32 Gunnison 30 at Delta

Western Slope Championship

Glenwood 27 Craig 23 at Delta

Denver Tournament

Glenwood 16 Frederick 30 at Denver
 Glenwood 21 Rocky Ford 33 at Denver

Final Standing

	W.	L.	Points	Opp. Pts.	Pct.
Glenwood	16	7	699	554	.695

DELTA TOURNAMENT

After completing their regular season, the Demons found themselves in a first-place tie with Central. This was broken when a coin was tossed deciding not the conference rating but only the bracket position at Delta. Since Glenwood won the toss they were able to go in either first or second place. Choosing second because this offered more opportunity for victories, the Demons commenced to prove themselves the best team on the Slope.

The first game proved to be only a slight test for the local cagers. Despite stage fright and cold shooting eyes, the Demons led all the way to win handily 43-22. Paul Amichaux led all the scorers as he wheeled and dealed off the post for 14 points.

The next foe for the Red and White was the aggregation from Gunnison. Favored because they had defeated all their league rivals, the Cowboys fell before the onrushing Demons, 32-30. It was a very close game all the way with the local boys blowing an 8-point lead in the last minute of play. Marcus Nordberg led the scorers with 17 needed points and Bill Colohan outclassed all defensive men as he cleared the backboard time after time even though shorter than two men on the Gunnison squad.

The next step was the finals. This time their enemies were a very fast, hot-shooting team from Craig who had mopped up their bracket without a semblance of trouble. They proved no match for the Demons, however, and fell 27-23 before a team that was a true of well coached, cooperating boys, hardly brilliant but very dependable at all times.

Three of the first five were picked to represent G.C.H.S. on the All-Western Slope team. Kip Long placed as a forward on the 2nd team and Paul Amichaux and Marcus Nordberg were chosen on the first team as guard and forward, respectively.

DENVER TOURNAMENT

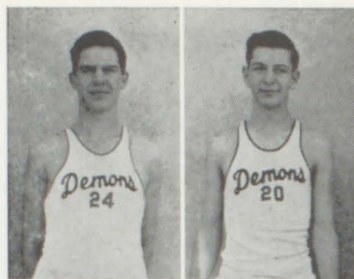
After surprising their fans by winning the Western Slope crown, the Demons went on to Denver where they were soundly walloped by two strong foes.

Their first game was against the Platte Valley winner, Frederick. Even though they controlled the ball throughout the game, the Demons could not break into the scoring column enough to even threaten their foes. Led by their ace center, Mike Pappas, who scored 20 points, the Frederick cagers won handily 30-16.

A tall Rocky Ford team next victimized the Demons to the tune of 33-21. Again controlling the ball more than the Meloneers, the Demons still could not score and so lost the last game of the season. Even in defeat the Demons showed they were a very good team.

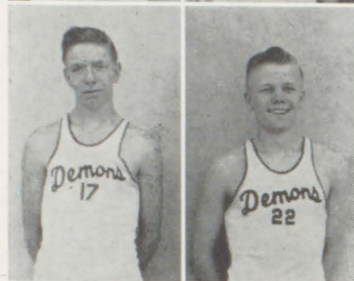
Basketball Personalities

Amichaux, Paul—Paul's superb defensive work and tricky pivoting off the post merited him a position on the All Western-Slope first team.



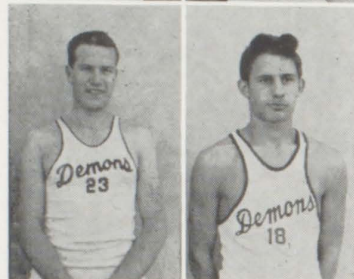
Rowe, Ernie—Ernie's tricky ball-handling and accurate drive-in shots were a menace to all opposition.

Colohan, Bill—"Available," a Frosh, proved himself a truly great player by his timely rebound work at Delta.



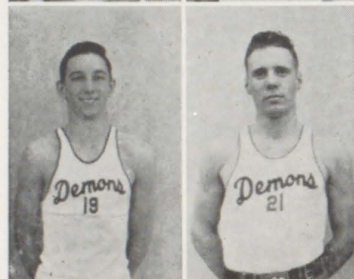
Rowe, George—This Sophomore showed ability which will make him a hard man to stop in the next two years.

Davies, Bill—Amichaux's very capable understudy, he showed scoring ability plus a knack of being where the opponents didn't want him.



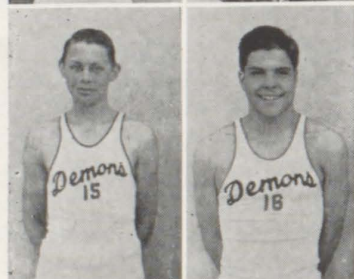
Simillion, Norman—Buzz was indispensable to the first five because he was very capable of handling any spot. Deadly one-hand shots and a smooth offensive style will gain him a spot on next year's squad.

Long, Kip—The steadiest man on the floor at all times, Kipper was invaluable when ball control was necessary or when points were needed in a tight spot. He earned All Western Slope second five.



Sininger, Rollin—Rollie's speed and deception plus ball-hawking ability placed him among the best in the league.

Nordberg, Marcus—High point man and all Western Slope forward in his Junior year, he will be a great asset to next year's cagers.



Vanderhoof, Donald—"Pauly's" two-handed set shots and fancy passing earned him a spot on the first ten.

Pretti, Brad—"Peeny" was willing and able to fill in when ever needed. Tricky shots and a deadly fast break earned him his letter.



Stubler, Coach Nicholas—Combining strategy and speed, Nick's style led the Demons to great heights.

Flynn, Jack—Faithfulness and cheerfulness were personified by Manager Flynn as he carried on his numerous duties.

Basketball Recapitulation

The first game of the season proved to be the first defeat of the season for the Demons. Palisade's Bulldogs, with eleven games under their belt, beat the untested Demons, 26-17. The following night, however, showed the Red and White warriors on top in a very rough contest with the Grand Junction Tigers. The final score stood 28-19.

The DeBeque Dragons were next to fall before the Demons. In a loosely played game, the Demons showed potential scoring power and also defensive ability by walloping their shorter rivals 44-16.

Over the Christmas vacation, Coach Stubler led his men on a trip into other regions. A very fast Leadville team trounced the Demons, 30-19. On the following night, the Demons held a very good Canon City team scoreless for a quarter but gradually dropped back to lose in an overtime period, 23-21.

Very much improved because of their losses, the local boys started an elongated victory string with a well-earned 32-21 victory over the Bulldogs of Palisade.

The next weekend added two more victories to the Demon list. Central fell before the enlightened Red and White horde 42-18 in the first conference game of the season. Meeker was next, falling 21-13 in a slow game played at Meeker.

The Demons next met another conference foe, their arch-rivals, the Rifle Bears. Trailing all the way, the Red Devils spurted in the last quarter to win 28-22. Eagle's Eagles were the next victims of the improved Demons, falling 27-18 in a slow contest.

The next weekend added still another pair of victories to the Demon's now impressive string. Both being home games, the Demons strutted their stuff before their local fans, winning over Fruita 36-25 and defeating Meeker 30-20.

Bad luck plagued the Demons in their next two encounters. Central's Warriors defeated them in an overtime contest 29-27 and Grand Junction proved more than a match, winning a close one, 30-27.

Again back on the victory path, the local boys trounced Rifle 39-26 at home and travelled to Eagle the following night to win 34-19.

In their last conference game, the Demons showed rare form as they completely subdued the Fruita Wildcats 40-22. Against DeBeque in the last scheduled game, the reserve five played the entire first half and were behind by only five points, 25-20. In the second half the first team went in and had little trouble beating the Dragons, 48-39.

Senior Stars

The members of the faculty have chosen eight seniors on the basis of the following qualities for the Senior Stars of 1948. The characteristics by which they were chosen were scholarship, leadership, participation in extra-curricular activities, friendliness, reliability, co-operation, sports, personal character, initiative, special talents.



BETTY CHASE

Betty has switched back and forth between Seminole, Oklahoma and G.C.H.S. in her high school years. Starting here in her freshman year, this pert, petite senior left for Seminole returning to Glenwood Springs for her senior year. Betty, with her boundless enthusiasm for every phase of school life, has done a particularly outstanding job in the field of dramatics. Glenwood high will long remember her rendition of the cockney serving maid in the Senior Class Play "Hobgoblin House", as well as the numerous recitations she has given in assemblies. Betty was president of Dramatics Club her senior year and served on the Canteen Committee. Her magnetic personality has made a place for Betty with all her fellow students.



CLIFFORD LONG

An intriguing combination of personality plus and leadership best describes Clifford Long. Freshman and sophomore class president, "Kip" in turn became Student Body vice president and Student Body president in his junior and senior years. He amply displayed his qualities of cool decisiveness on the basketball floor where he was on the first string his junior and senior years. This amiable senior was also president of Math Club in his senior year. An asset to any school affair, Cliffird will leave a vacancy hard to fill.



BARBARA LEE NOREN

Barbara Lee will long be remembered in G.C.H.S. both for her vibrant personality and her lovely voice. Music is her specialty and Barbara Lee has turned in some superior performances in the operettas of her junior and senior years, as well as in both sextette and trio. Her popularity with her fellow students was amply demonstrated by her election as Prom Queen in her junior year. Dramatics have also interested Barbara Lee, who has been a member of Dramatics Club three years and appeared in both the junior and senior class plays. This pretty diminutive senior is certainly one of the distinguished members of her class.



CHARLES DEVER

Determination is apparent in everything this handsome, dark-haired senior sets out to do. Chuck is, as quietly efficient in his school work where he regularly makes the honor roll, as he is on the football field, where he did an excellent job of playing center. Chuck's qualities of leadership and his popularity with the students of Glenwood high were shown when he was elected to the office of Student Council representative his freshman year and junior class president in his junior year. This debonair senior with his winning smile plans to enter the engineering field after graduation.



NORMA BENEDECK

Versatile is the word that aptly applies to Norma, for this vivacious senior has been outstanding in a wide range of activities. An honor student, Norma has still found time to be a cheerleader four years, canteen chairman, Yampah co-editor and a member of the Glee Club trio. In her senior year, Norma was elected to the National Honor Society. An outstanding skier and swimmer, she taught swimming her senior year. We will miss "Buck's" sparkling personality and cheery smile next year when she goes to C. U.



BILL DAVIES

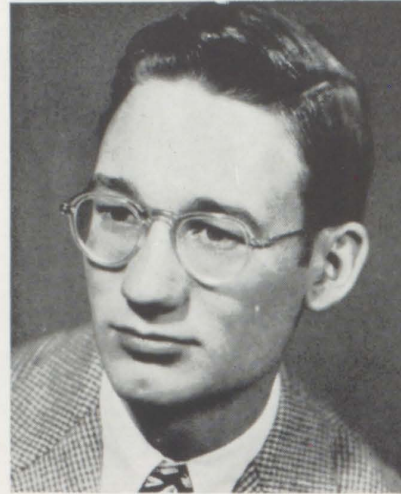
Bill will be greatly missed next year, for his calm and even temperament justly indicates the poised and balanced personality he has. Bill has taken part in many school activities and has done well in all of them. He has been vice president and president successively of the Boys' Glee Club. He played tackle in football and also played basketball, yet he still maintained a high scholastic average. Bill's apt sense of comedy and keen humor aided him in turning in a memorable performance in one of the lead roles of the '48 operetta "In Sunny, Sunny, Spain," as well as in both class plays.



SHARON DONEGAN

Sharon, a quiet senior miss whose serious face belies the twinkle in her eye, is one of the outstanding members of the class of '48. A brilliant student with a straight honor roll average, Sharon has an enviable scholastic record. Sharon's demure charm and quiet sense of humor have made her extremely popular with everyone.

In her senior year Sharon has been Publicity Club president, a member of the Canteen Committee, a member of National Honor Society and on the Yampah staff. Her junior year, she capably undertook the job of class secretary, acted in the class play, and was a member of the scholastic team. Sharon's plans after graduation are at present rather indefinite, but she will excel in whatever she undertakes.



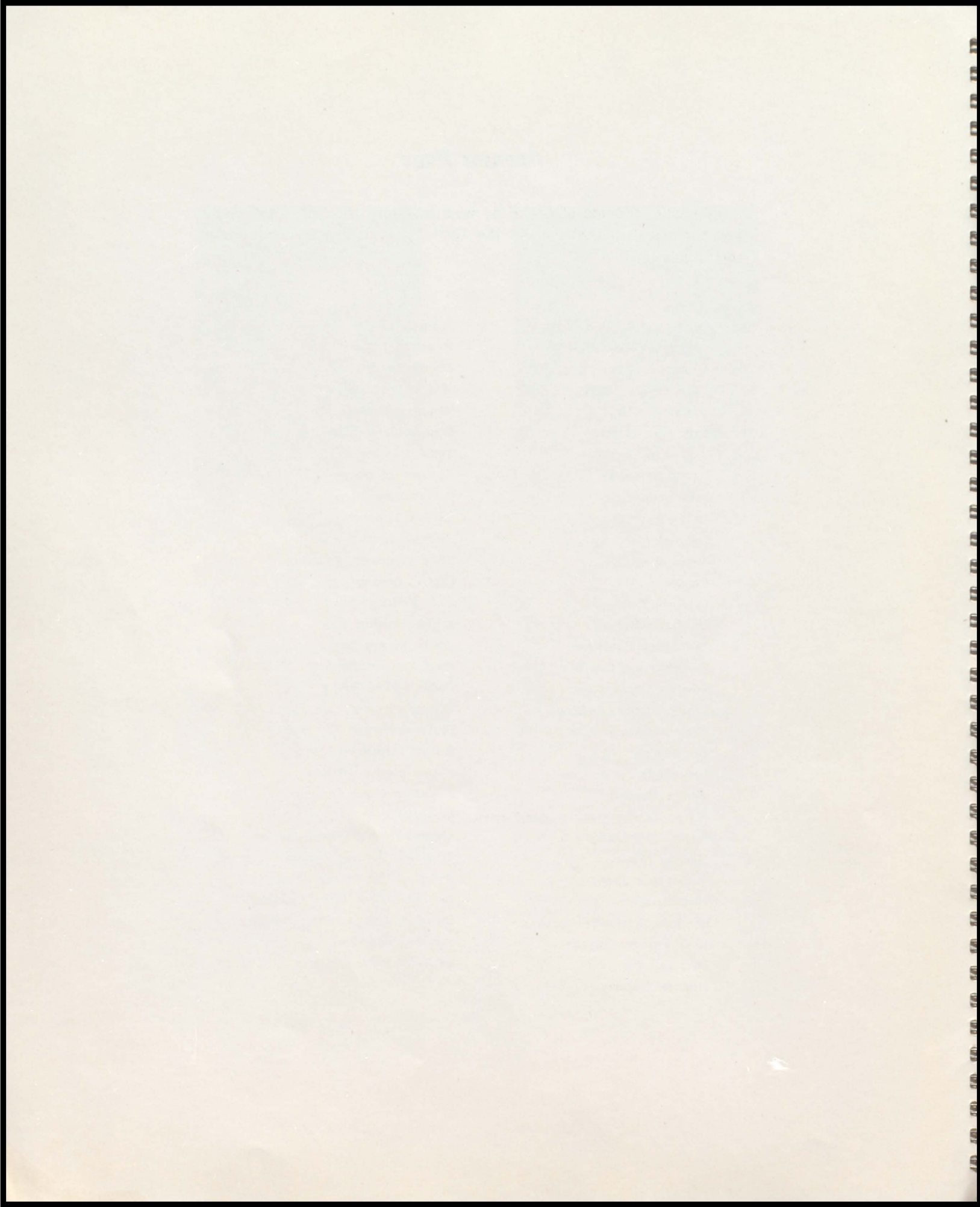
BRADFORD PRETTI

Urbane and thoughtful, Bradford Pretti is one of the most capable of people. His affable character and friendly greeting for everyone have insured him many friends at G.C.H.S. Brad has excelled in the scholastic field, winning a medal in State Scholarship exams when a freshman. He has played both football and basketball all four years of high school and has been a member of G Club in his junior and senior years. "Brad" was also treasurer of the Canteen Committee in his senior year. Bradford has well earned a reputation for being one of the most dependable seniors of the class of '48.

Sponsor Page

We, the students of G.C.H.S., wish to thank the following people and business firms who made the 1948 Yampah possible because of their donations.

Colorado Hotel Drug Store	Ayres & Fick
Langley's Barber Shop	Houghton & Son
Glenwood Liquor Store	Denver Hotel
South Grand Grocery	H & L Food Mart
Hesteds	Glenwood Produce
Negri's Restaurant	Glenwood Floral
Parkison's Drug Store	Van's Sporting Goods
Goody Shoppe	Abstract Company
Glen Theatre	Klara's Dress Shop
Bryant Drug Store	Dever's Jewelry
Owl Cafe	Arthur's Jewelry
Meredith Studio	Elliot Equipment Company
Gambles	Central Grocery
Colorado Hotel	C. Z. Buckles Agency
Hubbard's Market	Buckles Frosted City
H. V. High Hardware	Car-Lu Flower Shop
Brockway and Company	First National Bank
Tessadri Liquor Store	Rader Flying Service
Texaco Station, Huntley	Farmer's Supply
Clinic Pharmacy	Tenbrook Garage
Benedeck's	Bullock Department Store
Heberling's	Conoco Station, Shelton
Burdge Mortuary	J. V. Rose Motor Company
Rigney Service Station, Lake-Voegley	Glenwood Cafe
Glenwood Creamery	Lincicome-Wood Service Station
Morning Reminder	Coca Cola Bottling Company
Buttercup Bakery	Glenwood Hot Springs Company
Ford Garage	Lincicome-Wood Motor Company
Overhults Furniture Company	Glenwood Light & Water Company
J. C. Penney Company	The Glenwood Post
Troy Laundry	Eastwood Motor Company
Kenrose Cottages	



Autographs

Autographs

200
1070

